

State Hiway Department to Call for Bids On 32 Projects in 22 Counties July 10-11

The State Highway Commission called for bids at its meeting in Portland July 10th and 11th, on 32 projects, located in 22 counties of the State, and which in the aggregate represent an estimated total expenditure of \$2,200,000.

Included in the list are 2 bridges, 3 buildings, 2 rock production jobs and 25 road construction projects. The road work involves 32 miles of grading; 43.57 miles of rock base or surfacing; 87 miles of oiling work and 24.27 miles of asphaltic concrete paving. A brief summary of the major projects in Lane and Douglas counties follows:

Lane County: Bids are being called for the surfacing and oiling of 4.09 miles of detours in the vicinity of and easterly from the site of the Meridian Dam on the Willamette Highway. About 1.3 miles of the project will be on the permanent alignment of the highway relocation required to take the highway above the proposed water reservoir while the balance of the project will be on a temporary route along the present highway to carry traffic past the railroad and highway reconstruction work now in progress. Completion of the detour oiling, scheduled for this fall, will provide an oiled riding surface for the public prior to the beginning of the rainy season.

Douglas County: Two projects are listed for Douglas county, both to be financed by state funds apportioned from expenditure on city streets.

In Yoncalla it is planned to improve "B" street between 2nd and 5th streets by regrading, new rock work and construction of a 22 foot bituminous macadam wearing surface.

In Oakland, resurfacing of Locust street with a 3 inch lift of plant mix asphaltic concrete to a width of 64 feet between 1st and 3rd streets and to a 25 foot width between 3rd and 2nd avenue is planned.

Easier were it to hurl the root of mountain from its base, than force the yoke of slavery upon man determined to be free. —Southey

The Liberty Bell was cast in London in 1752 to celebrate the 50th year of the Commonwealth of Pennsylvania. The bell arrived in Philadelphia in August and cracked during its testing.

AFTER ERICKSON PLEADED GUILTY



REPUTED "KING OF THE BOOKIES," Frank Erickson (center) looks grimly ahead as he is escorted from the New York Special Sessions Court where he pleaded guilty to a charge of bookmaking and conspiracy. He had been indicted on 60 counts. He will be sentenced soon. (International)

Important Seed Producers' Meeting To Be Held in Junction City July 13

An important meeting of Lane County winter cover crop seed producers and dealers has been scheduled for the Grange Hall, Junction City, Oregon, starting at 8:00 p.m., July 13, according to Ernest E. Schrenk, Chairman, Lane County PMA Committee.

Schrenk urges all producers of Austrian winter peas, Common vetch, Willamette vetch, Hairy vetch and common ryegrass to plan on attending this meeting. At this evening meeting, steps will be outlined which producers and dealers must follow in order to be eligible for 1950 price support on the various cover crop seeds.

Loans, as well as purchase agreements, are available to growers under the 1950 support program. In addition, the 1950 support program provides that dealers who have paid the support price to growers are eligible to sell seed to Commodity Credit Corporation. All dealers are urged to be present since one of the points to be thoroughly discussed at this meeting will be the procedure to be followed by County Committee in certifying to the dealer's eligibility.

Also to be discussed at this meeting are the county Committee, grower, and dealer recommendations for a support program for cover crop seeds for 1951. At present, it is estimated that this year's crop of Austrian winter peas will be a 2-year supply and there is some question as to whether or not the support program for Austrian peas will be available for 1951.

According to the Production and Marketing Administration State Office, this is one of a series of scheduled meetings being held throughout Oregon to promote a better understanding of the 1950 Winter Cover Crop Seed price support program.

Odd Fact
A 10-year-old junior traffic patrolman for a San Diego school was fired for conduct unbecoming an officer when he helped three little girls across the street by peppering them from behind with an air rifle.

Egg Feed Ratio At Lowest Point;

"It's the least favorable egg ratio in 20 years."

That's the way Noel Bennion, O.S.C. extension poultry specialist, describes the egg-feed ratio now facing Oregon poultrymen. One dozen eggs buys about 9 and one-half pounds of feed. Normally, he says, a dozen will buy about 12 to 15 pounds of feed.

The specialist also estimates that a 5 to 10 per cent decrease in number of chicks raised is taking place this year. He adds, however, that a reduction in the number of chicks hatched is usually reflected by a good market year.

Because of the generally unfavorable egg-feed ratio, Bennion believes that all poultrymen must eventually make brooding part of their business and replace a high proportion of the laying flock each year. Pullets lay 25 to 30 per cent more eggs than birds in their second year of lay, the specialist reminds.

Instead of marketing old hens still in lay, however, he suggests that they be kept through the summer months in temporary houses and culled as they go out of lay.

In stressing efficient, economical egg production, Bennion says culling and prevention of feed waste are doubly important. Poorly constructed feeders and rats waste upwards of 20 per cent of the feed in some poultry operations.

Culling is a year around job. Birds that are light in body weight and slow developing are poor financial risks. Handling each bird to determine production qualities is a task for July and August. Discard pullets which fail to measure up as economical producers.

Culling the specialist says, can be summarized into four considerations:

1. Production. A soft, pliable abdomen and wide spacing between the pelvic bones are indications of a bird in lay.
2. Yellow coloring in the eye ring, beak and shanks. This generally marks a bird which is not laying.
3. Molting. Losing feathers now indicates non-production.
4. Conditions and body weight. Going "light" means no eggs.

Words of the Wise
Good manners is the art of making those people easy with whom we converse. Whoever makes the fewest people uneasy, is the best bred in the company. —(Swift)

Worldly fame is but a breath of wind that blows now this way, and now that, and changes name as it changes direction.—Dante.

Sentinel subscriptions by mail.

Two Grove Students Make Honor Roll

UNIVERSITY OF OREGON (Special)—Harold D. Witherspoon, 1415 E. Main St., and Robert J. Moore, 966 S. Sixth St., Cottage Grove, were listed on the spring term honor roll for the University.

Witherspoon was one of 35 students who made a grade point average of 4 or all A's.

The honor roll includes all undergraduate students with grade point averages of 3.50 or better based on not less than 12 term hours.

Odd Fact

Checking out of a Rochester, N. Y. hospital after a siege of pneumonia, a 108-year-old Civil War veteran had only one complaint—the medicine given him during his illness had dulled his appetite.

Nothing is less selfish than a desire of fame, since its only sure acquisition is by labouring for others.—Walter Savage Landor.

I.E.L. & Mail Power Saw Sales and Service

Complete Line of Oregon Cox's Chipper Chains for any make of saw.

Ask us about the light weight, low priced Presto Fire Extinguisher for the Logger, Home, Car or Boat.

Chain Saw Filing

SOUTH 99 SAW SHOP

So. 99 Hwy. at Steel Bridge, Cottage Grove, Phone 638. Emergency Phones 122-L or 836-Y

3625 South 99 Hwy, Eugene, Oregon. Dial 4-2624

Loose Leaf Supplies—all kinds. The Sentinel.

Freddie Fix-It



We really cannot tell a lie Our plumbing is the best to buy.

Short's PLUMBING
314 MAIN PHONE 281



GREETINGS To Our Friends At the RODEO

We enjoy a reputation for service and quality that is unexcelled.

One visit will convince you.

KELLY DRUG CO.

Ride 'em COWBOY

- - But if you get saddle-sore and want a home of your own to rest in, be sure to see us for—

Hardware Lumber

Boysen Paints

Doors and Windows

Insulation

— You can't ride herd on better quality!

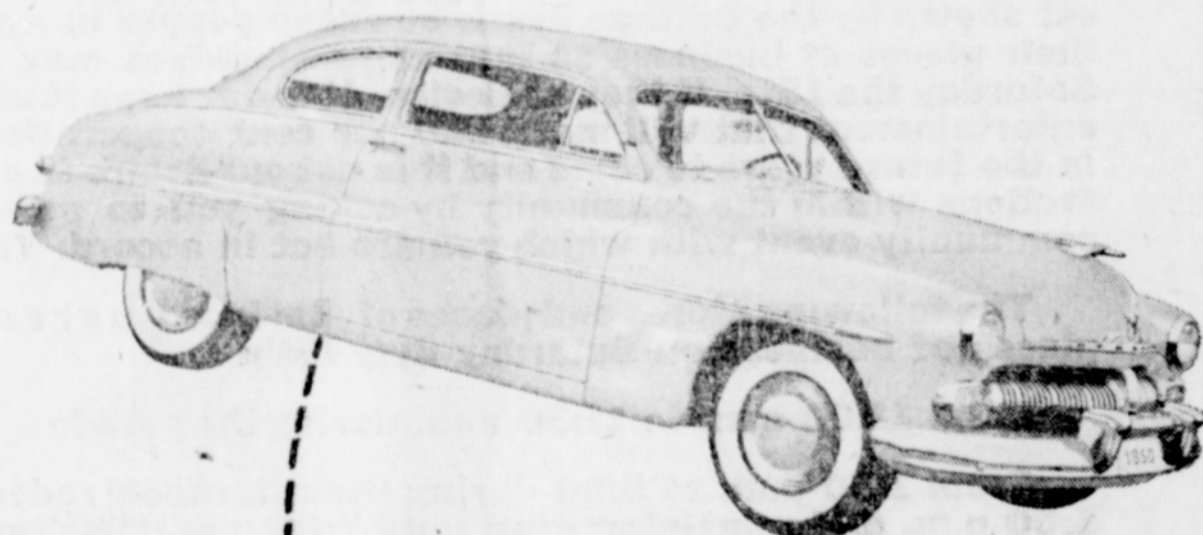
W. J. McCREADY LUMBER CO.

238 Pacific Hiway South

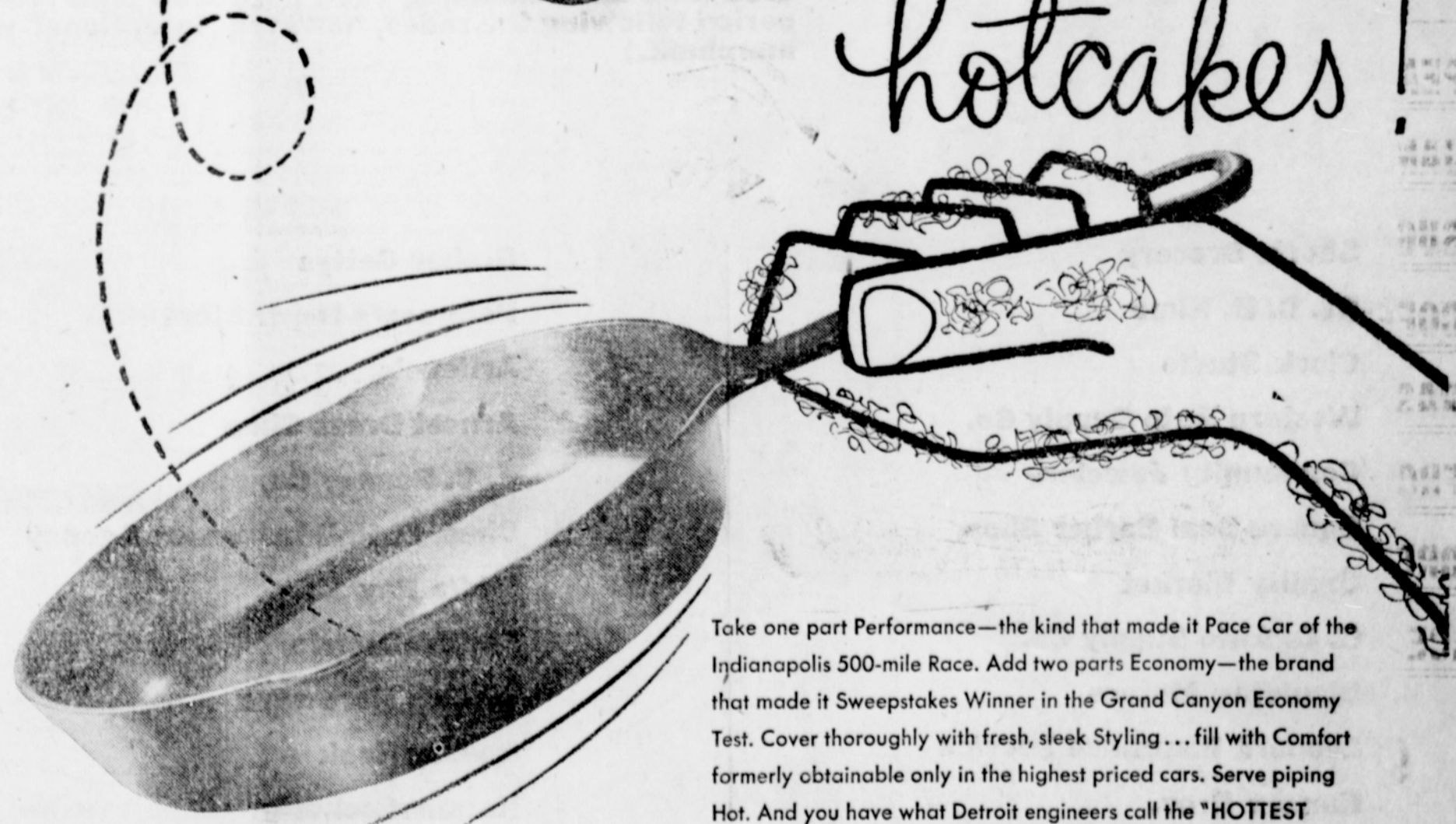
OPEN SATURDAY UNTIL 5:00 P. M.

Ed Rothe, Mgr.

Phone 561



selling like hotcakes!



Take one part Performance—the kind that made it Pace Car of the Indianapolis 500-mile Race. Add two parts Economy—the brand that made it Sweepstakes Winner in the Grand Canyon Economy Test. Cover thoroughly with fresh, sleek Styling... fill with comfort formerly obtainable only in the highest priced cars. Serve piping Hot. And you have what Detroit engineers call the "HOTTEST value combination of 1950!" Thousands of Westerners are enjoying the finer luxury and amazing roadability of this spacious, 3600 pound Mercury. Prove the recipe yourself by Test Driving it today!

Floyd Githens Motors, Inc.

836 Main

Phone 27

MERCURY

ONLY SWEEPSTAKES WINNER, GRAND CANYON ECONOMY RUN