

More Protein for Dairy Cows Helps As Pastures Fail

Now that pastures are slackening off it may be necessary to increase the protein percentage in dairy feed grains unless first quality alfalfa hay or ample legume silage is available, is the reminder from H. P. Ewalt, O.S.C. extension specialist.

Dairymen can frequently save money on their protein needs this time of year, he says, by checking mill run prices when they need to buy a protein supplement to increase their protein feeding 2 per cent or so. More expensive sources of protein are soybean, cottonseed and linseed meal.

As heavier grain feeding gets underway, it is advisable to feed according to production on an individual cow basis. Otherwise, low producing cows may be overfed at the expense of cows that may be capable of producing more butterfat than their limited feed will permit.

October and March are the two peak cow freshening months, reminds Ewalt. A dry cow needs all the good roughage she will eat and 5 to 10 pounds of grain mix each day if she is to be in condition to produce milk at the peak of her inheritance after calving.

Looking at the state as a whole, Ewalt says the supply of feed grains is considerably above average. Hay supplies, meanwhile, are 8 per cent above average on a per animal unit basis.

Oregon dairy cow numbers have shown recent sign of an upturn. Although still at the second low point in 17 years, the cow population has shown a steady increase since the bottom was reached about June 1948. Estimated number of cows in production on June 1 this year was 225,000, a 2 per cent increase as compared with the same month a year previously.

Household Hint

A periodic cleaning is commended to keep the finished surfaces of your electric iron shiny. If the soleplate becomes caked with starch, wash it with soap and water. Rinse and wax with a beeswax pad. Be sure to rub the soleplate thoroughly over absorbent paper to remove any excess wax.

Sentinel subscriptions by mail.

Cottage Grove Sentinel

COTTAGE GROVE, LANE COUNTY, OREGON THURSDAY, OCTOBER 13, 1949 NUMBER 10

Drop in Vets at OSC to Bring the Total Down 9%

Oregon State College—Despite a drop of 25 per cent in veteran enrollment here this fall, total enrollments dropped only 9 per cent, somewhat less than was expected on the basis of early indication. Veterans now total 2693, down from 3579.

Final registration of around 6800 is predicted by college officials. The total reached 6606 before the end of the first week of classes. In the past late comers after that date ranged from 150 to 200 additional.

Higher enrollment in the graduate school and a record-breaking senior class is seen as an indication of the high value placed on a degree from this institution. Graduate enrollment at 323 is up 17 per cent and the senior class with 1781 shows a 39 per cent jump over a year ago.

Home Economics enrollment is up 12 per cent and pharmacy 8 per cent. Engineering shows the heaviest drop of 21 per cent but is still the largest school with 1370 enrolled.

The greatest depth yet found in the Atlantic is 8,750 meters, in the Puerto Rico trough.

OSC Homecoming Oct. 29; Dad's Day Next February

Oregon State College Homecoming here will be held this October 28 and 29, in connection with the Washington State college football game. Bob Dunn, Corvallis has been named general chairman for the event.

Dad's day, formerly held in the fall, will be held next February 3 and 4 instead, at the time of two conference games with University of Washington. Completion of the 10,000-seat pavilion makes possible entertaining them at conference basketball games for the first time.

DODDS HEADS U. OF O. HOMECOMING

University of Oregon, Eugene, October 10 (Special)—Willard A. Dodds of Eugene has been named to head the University of Oregon's Homecoming celebration this year. The traditional bonfire, noise parade, variety show, sign contest, fish fry, and the big game between the University and Oregon State are among the features of the week end, scheduled on November 18 and 19.

Household Hint

Fresh iodine stains can be removed with ammonia; or dip in hot starch, soak in warm suds and wash as usual.

4-H Leaders to Start Projects About Tractors

Plans for a three-day tractor maintenance clinic for Oregon 4-H leaders to be held on the O.S.C. campus, October 31 and November 1 and 2, has been announced by L. J. Allen, state 4-H club leader.

The clinic is to be held in preparation for including a tractor maintenance project in the Oregon 4-H club program starting with the 1950 club year. On a national basis, Allen states, the 4-H tractor maintenance project has been carried on over a six year period. Next year, however, it will be new in five western states.

Regional project sponsor is the General Petroleum corporation, Los Angeles. On a regional basis, the project was inaugurated recently at Davis, California, when a two-day meeting was held for 4-H club leaders from Oregon, Washington, California, Nevada, and Arizona. Cal Monroe, state extension agent, and M. G. Huber, extension agricultural engineer, attended from Oregon.

There are approximately 28,000 wheel and crawler type tractors on Oregon farms, Huber reports, plus an additional 11,000 smaller garden tractors. Purpose of the new project is to teach members proper servicing and adjustment technique. For example, Huber estimates that 10 to 15 per cent of tractor gas is wasted through improper carburetor adjustments. It is not contemplated to attempt a major tractor overhaul or repair program.

The project sponsor, the General Petroleum corporation, will provide leaders and club members with instruction kits through the extension service, and will also award annual medals to county winners. To the outstanding project member in the state each year, the corporation will award a trip to National 4-H club Congress in Chicago.

Clinic plans call for an attendance of 25 to 30 leaders, Allen concludes.

Recovering



Associate Supreme Court Justice William O. Douglas is attended by an orderly at St. Elizabeth Hospital in Yakima, Wash. Preliminary X-rays showed the Justice had suffered 13 broken ribs when thrown from his horse near the summit of Chinook Pass. (International)

Bill Triska Will Participate in 'Operation Miki'

Bill B. Triska, damage controlman, second class, USN, son of Mr. and Mrs. Will Triska of 695 Sweet Lane, Cottage Grove, Oregon is serving as a crew member aboard the escort aircraft carrier USS Badoeng Strait, which is participating in "Operation Miki," a large-scale amphibious exercise in the Pacific.

The maneuvers, scheduled to continue through October and November, involve nearly 40,000 soldiers, sailors and marines, and are designed to dislodge an imaginary "aggressor" force from the Hawaiian Islands. General Mark W. Clark, Commanding General of the Sixth Army, is overall commander.

The First Task Fleet will conduct the assault on Oahu with complete wartime realism. Secrecy shrouds the probable date of departure from mainland waters and the projected D-Day on the beaches of Oahu. As in wartime island operations, the task fleet will include a full array of Naval vessels ranging from fully loaded tank landing ships to powerful aircraft carriers.

"Miki," a Hawaiian word meaning "readiness" or "diligent," is one of a number of joint exercises planned by the Joint Chiefs of Staff for the Army, Navy and Air Force, each designed to accomplish a specific mission for maintaining the armed forces at a high degree of efficiency.

Egg Feed Ratio More Favorable To Poultrymen

According to the United States Department of Agriculture the present egg-feed price ratio is much more favorable to poultrymen than a year ago.

The average poultry ration cost \$4.14 per 100 pounds last month compared to \$4.42 a year ago. This results in an egg-feed ratio of which 1 dozen eggs would buy 14.7 pounds of feed in the month of August this year compared to 14.5 pounds a year ago.

"Poultrymen should take advantage of this favorable price feed ratio" states Theodore Schommer, manager of Triangle Milling Company, "not only for the profit involved but to help relieve the serious egg shortage in this area."

We have them beautiful **GRUEN** WATCHES

Now priced from \$29.75

We engrave anything we sell FREE
Community Jewelers
612 Main Phone 351
8-4te-11



HERE'S WHERE SAVINGS REALLY ADD UP!

Every price is a low price every day at SWARTZ AND WOLFARD'S . . . and that's why when our checker totals up your food order, he's adding up savings for you. And remember — it's the amount you save on the total cost that really counts — that really adds up in the course of a month and multiples in the course of a year. So start today to save in a BIG way — buy all your food needs at

SWARTZ AND WOLFARD FRIENDLY FOOD SERVICE 637 MAIN ST. COTTAGE GROVE - PHONE 53

WESSON OIL For Fine Salads Qt. 65c
SNOWDRIFT Shortening use the best 3 lbs 85c

Canned Goods

PEAS Yamhill No. 2	2/23c
TURNIPTURNIP Above Greens Par	17c
LUNCHEON MEAT Treet	39c
Potted Armour's MEAT 1/4 tins	3/29c
H & D Peaches Sliced Freestone 2 1/2 tin Heavy Syrup	25c

Farm-Fresh Produce
25 lb. bag Deschutes
No. 1 Potatoes 95c
White and Yellow

ONIONS 4 lbs. 19c

LOOK WHAT **3 1/2 c lb. WILL BUY**

SQUASH — Banana, Danish, Hubbard
CABBAGE — Firm heads

Apple CIDER
Hood River Gal. 75c

Pennant Mince Meat 30 oz. jar 45c
Diamond A Pumpkin 2 1/2 tins 11c

Frozen Foods

Peas Flavor-Pac	28c
Chip Steaks (4)	49c
Strawberries Flavor-Pac	37c
Red Rose Ice Cream Regular Qt.	39c
DeLuxe Qt.	49c

NEW LOW PRICES

HILLS BROS. COFFEE 55c POUND
REGULAR GRIND OR DRIP & GLASS-MAKER

NEW BAKER'S 4 IN 1 INSTANT SWEET COCOA MIX
FOR INSTANT COCOA, FROSTING, FUDGE, SAUCE 37c lb.

OUR delicious MEATS

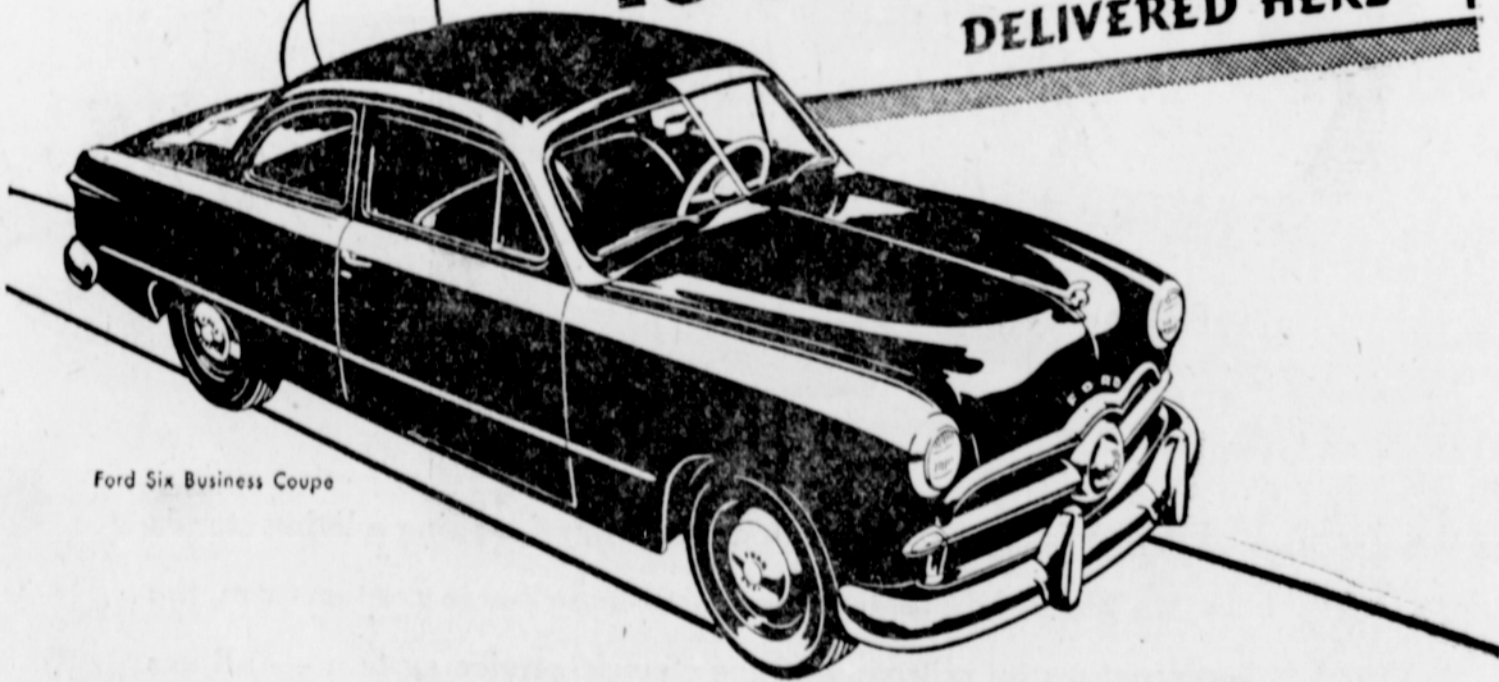
Kelly's Market
PORK STEAK Shoulder Cut 59c lb.
Fancy Veal Chops Loin or Rib 79c lb.
SLICED BACON Oregon Brand 69c lb.
Fresh PORK LIVER 45c lb.

Italian Dried Prunes 2 lb. 35c
Krinkles Egg Noodles lb. 31c
Cream of Wheat Quick or Reg. 29c
Bernardin Jar Lids Doz. 10c
Fab Soap Deal 2 pkgs. 44c
Sweetheart Soap Deal 4 Cakes — Bath Size 39c

SWARTZ AND WOLFARD FRIENDLY FOOD SERVICE 637 MAIN ST. - COTTAGE GROVE - PHONE 53

Do You Know..?

... That the price of a '49 FORD is only \$1593.55 DELIVERED HERE



Ford Six Business Coupe

This delivered price includes U.S. Taxes, Dual Windshield Wipers and Tail Lights, Oil Bath Air Cleaner, Oil Filter, Gas, Oil and Service Policy. White sidewall tires, V-8 engine and overdrive optional at extra cost. Price may vary slightly in different localities. Local and state taxes (if any) are extra.

"Drive a Ford and **FEEL** the difference!"

FLOYD GITHENS MOTORS, Inc.

836 Main

Phone 27



AWARDED THE FASHION ACADEMY GOLD MEDAL AS THE "FASHION CAR OF THE YEAR"