

Cottage Grove Sentinel Published Every Thursday at Cottage Grove, Oregon Established August 15, 1889

W. C. MARTIN Editor, Publisher Subscription rates, cash in advance. No subscription for less than 3 months.

THE NEW GOVERNOR At the succession of Governor John Hall to the office of governor, this state found itself much in the same position as the nation when President Truman took over in 1945 and like the Molalla Pioneer.

THOSE WHO THROW BRICKS AT THE U. S. The statement of E. C. Sammons, president of the United States bank at Portland, made at the Oregon State College at Corvallis recently is significant.

POWER SHORTAGE IMMINENT Good news is very acceptable, but we must take the bad news along with the good and face the facts as they exist.

LIQUOR BOARD TO STAY UNTIL SUCCESSORS NAMED Oregon's three liquor commissioners who resigned at Gov. John H. Hall's request, will remain in office until he names successors.

NATIONAL FORESTS SAFE The national forests include 73 million acres capable of growing commercial timber crops, says a report of the U. S. forest service.

CROSSING ACCIDENTS Approximately 88 per cent of the accidents at highway-railroad grade-crossings last year involved motor vehicles and resulted in 1,558 fatalities.

COLOR OF FLOUR REMAINS Addition of thiamine, niacin, riboflavin and iron does not materially change the color or flavor of white flour, according to the Georgia agricultural extension service.

POPPERS TOASTERS FOR CHRISTMAS Community Jewelers. 14-1tc-201

LETTERS TO EDITOR To the Editor: When the writer came to this little village more than seventy-five years ago, it was called "Slattown".

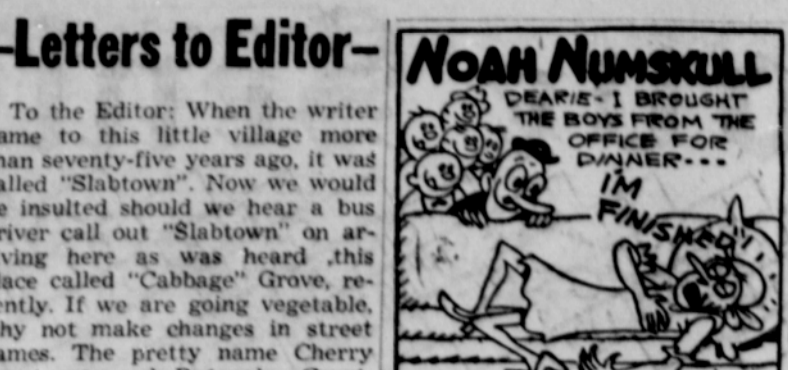
DEAR NOAH WHEN A WOMAN COMPLAINS HER WORK IS NEVER DONE, SHOULD SHE TAKE A COURSE IN A FINISHING SCHOOL?

DEAR NOAH WAS THE OLD DOUBLE BED AN AWFUL LOT OF BUNK?

MASTITIS CONTROL Methods Important Bactericidal Agents Favorable Response

USES OF SOYBEANS Contrary to general impressions that the bulk of soybean production in this country reaches the consumer in paints and plastics, recent surveys show that actually less than 5 per cent of the annual production of soybean oil is so used.

JAIL TALKATIVE WIVES The old penal code of China provided that a man could obtain a divorce if his wife was too talkative or if she ignored her parents.



THOUGHTLETS By Earl B. Balch Christianity is of no value unless you can take it with you into society, business and politics.

TO THE MIND OF THIS WRITER, this wonderful "Friendship Train" that is rolling across the nation is perhaps the greatest concerted act of generosity of this nation in peace time.

TURPENTINE FROM PULP Increased demands and higher market prices for turpentine and its component fractions have created an additional source of revenue for manufacturers of pulp.



DOUBLE-ACTION TURNIP The turnip is really a double-action vegetable. Its roots make good winter food and the greens are excellent.

25 YEARS I have operated a barber shop in Cottage Grove for the past twenty-five years. If experience counts, these years should mean something to the discriminating public who appreciate good service.

MAXINE THOMAS has been associated with our shop long enough to be well known here. She is very dependable and is an exception with children.

FLOYD MORRIS has been with us a year. He is a barber with 25 years experience and has done ladies' hair cutting in several exclusive barber shops in Portland.

SO FOR EXPERIENCED SERVICE call on SQUARE DEAL BARBER SHOP 514 Main St.

HAS RUSSIA THE ATOM BOMB? Russia has exploded a small atom bomb, a French newspaper reported.

POSEDLY HEARD FOR 20 MILES, was said to have been witnessed by nearly 200 Russian officials.



Here's every man's automobile! It is difficult to think of a person who wouldn't be extremely happy to own and drive a Pontiac.

WILLIAMS MOTORS North 9th on Highway 99 Phone 19 Cottage Grove

If you plan to buy anything on time we want you to read this...

"Regulation W", the war time government regulation which determined the amount of down-payment and number of monthly payments you made on purchases of many articles, was officially discontinued as of November 1.

Table with columns for Model, Down Payment, and Maximum No. of Monthly Payments. Rows include 1946-1947 (new and used), 1940-1941-1942, 1939 and prior, and Equipment (Household Appliances and Furniture, Radios and Radio Combinations).

The FIRST NATIONAL BANK of Cottage Grove COTTAGE GROVE, OREGON AFFILIATED WITH THE FIRST NATIONAL BANK OF PORTLAND Member Federal Deposit Insurance Corporation

KIDDIES! KIDDIES! KIDDIES! IT'S HERE— Spike Jones Non-breakable Album of Kiddie Records! Come in and listen! BRISBANE ELECTRIC Phone 73 702 Main Columbia Victor Capital M.G.M. Signature