

Good Crops With High Production Shown in Report

Above-average crop prospects and increased production of meat, milk, and eggs this season are indicated by the O.S.C. cooperative extension service in a report just issued on the agricultural situation and outlook.

In the country as a whole, the report states, crop prospects are better than average at this season of the year, with the season well advanced in the west but somewhat late in the southeast.

The total acreage in crops is expected to be maintained and the numbers of milk cows, beef cattle, sheep, and chickens will be increased, even though the surplus of farm labor is being reduced around industrial areas and some of the part-time and subsistence farms may not be worked as much as usual.

Prospects are good for winter wheat with production estimated at 616 million bushels compared with 589 million in 1940 and 569 million as the 1930-1939 average.

On April 1, milk production per capita was about 4 per cent greater than the previous record at the same season and egg production continues on a high level.

The report, available from county agents, also contains information on several of Oregon's specialty crop enterprises and a discussion of the fur-farming industry.

Strawberries Will Be Harvested Soon

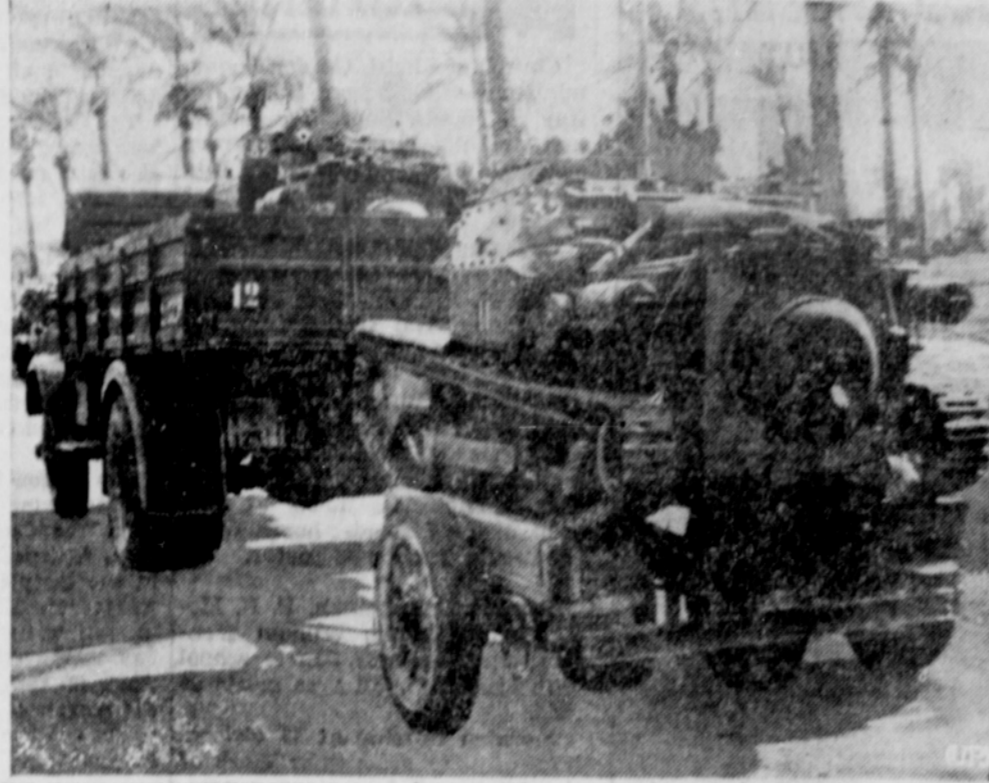
Due to the early spring weather, strawberries are expected to be ripe two to three weeks ahead of the usual harvest season.

W. A. Hemenway, who operates the largest berry ranch in this section, said Tuesday a few ripe berries had been found in his field, while dusting for spittal bugs and that picking would be well underway within the next two or three weeks.

Fresh strawberries have already been marketed in the Portland area.

Trucks Rush Tinny Italian Tanks for Desert Drive

This is an example of the new tinny Italian tanks being used by the military.



Junction City Fat Lamb Premium List Is Enlarged

The premium for the Junction City Fat Lamb show which is being held May 17 at Junction City, has been enlarged to over \$200 this year because of the number of entries in the medium wool single lamb and pen of 3 fat lamb classes.

A queen contest is being sponsored in connection with the show this year. The candidates are selected from the high school senior class and their sponsor are to sell buttons at 10c each or dance tickets for the Shepherds Ball which will be held on Friday night before the Lamb Show on Saturday.

Anyone wishing further information concerning the lamb show should contact the Junction City Lamb Show committee.

To keep the board from sliding when rolling out noodles, place a sheet of wet newspaper on the table, under the board.

There are 4,500 miles of canals in The Netherlands.

From Coquille 40-35 Grove Golfers Win

A twenty-five man team from the Cottage Grove Golf club defeated a team from Coquille Sunday in the first inter-city match of the season.

May 11th the Grovers will play a return match at Coquille and next Sunday will entertain Marshfield here in the second inter-city tourney of the season.

Following is a summary of the pairings with the Coquille players being named first:

C. Howard, 85	1/2
Milligan, 81	2 1/2
Geo. Linn, 84	1/2
Denson, 82	2 1/2
Dutch Clinton, 84	0
Zimmerly, 76	3
Jack McLarrin, 83	0
Lemley, 77	3
John Harmol, 87	1 1/2
Hill, 81	1 1/2
Less Summerlin, 89	0
Morelock, 84	3
Spike Leslie, 91	1/2
Langston, 85	2 1/2
Stew Morton, 93	0
Jones, 80	3
Bill Barrows, 95	0
L. Schroeder, 88	3
Pat McLarrin, 96	0
Gasper, 83	3
R. Bowers, 94	2
Wiese, 96	1
Pete Morton, 93	3
McQueen, 89	0
Pat Rickard, 89	2 1/2
French, 94	1/2
Top Morgan, 93	3
Sunderland, 90	0
Ed Semfert, 90	0
Swartz, 83	3
H. Demmet, 92	1 1/2
Wolfard, 92	1 1/2
Dick Arnold, 86	1
Trask, 83	2
H. Holmes, 101	0
Mickey, 93	3
Lloyd Wilson, 103	3
Scott, 108	0
B. McLarrin, 93	0
Sharp, 101	0
O. Hendricks, 85	2 1/2
Swanson, 88	1/2
H. Anderson, 98	3
Peck, 102	0
B. Dunn	2
Dunlop	1
Littrel	2 1/2
Hendricks	1/2
Clinton	0
Mast	3

Painting Cellar Floors
Cement cellar floors can be made less dusty and more attractive by painting. Only specially prepared synthetic resin or rubber composition cement floor paints should be used as ordinary oil paints will not adhere to concrete.

58 Students on Achievement Roll

Fifty eight high school students were listed on the achievement roll in the fifth six weeks period released yesterday.

Seniors: Patricia Baldwin, Doris Black, Marcia Brund, Elinor Clark Maxine Ewing, Olive Gawley, Lois Hansen, Dorothy Harris, Mildred Harris, Donna Hatch, Evelyn Lamb, Sylvia Michael, June Romer, Dick Smith, Harry Sturges.

Juniors: Marjory Earl, June Eastburn, Bertha Hatch, Cleora Korstjens, Richard Laird, Orlena Martin, Bob Moody, Faye Nixon, Don Nelson, Janet Peterson, Juanita Peters, Alyce Trunnell, Jean Yearous.

Freshmen: Sterling Bolton, Fred Boron, Donna Burleson, Katherine Chambers, John Darby, Phyllis Foster, Mary Gasper, Helen Gates, Kenneth Hansen, Eva Hopman, Bernadine Loomis, Frances Michael, Vera Miller, Joanne Premazzi, Velma Pollock, Vivian Pollock, Kay Taylor, Rose Mary Tipes.

An Ironie Twist
Fred Rebell sailed a sloop single-handed from Australia to Los Angeles. Then he was shipwrecked by a gale in Los Angeles harbor.

Like peppermint? Try our fresh peppermint ice cream at Gustafson's.



Lovely Skin SPECIAL LUX TOILET SOAP

TRY ACTIVE LATHER FACIALS FOR 30 DAYS
Give your skin screen star care! Active Lather Facials with Lux Toilet Soap remove dust, dirt, stale cosmetics thoroughly; help you keep skin smooth!

Zephyr Fresh LIFEBOUOY
DELIGHTFUL TANGY SCENT IT'S DIFFERENT Try it!

New Quick LUX
America's favorite for fine things

Rinso Anti-Sneeze RINSO
For Whiter Washes
98% FREE OF SNEEZY SOAP DUST

SPRY
Folks cheer for SPRY FULL FLAVOR cakes, pies, and fried foods

COME IN FOR THESE BARGAINS-AND OUR OTHER SPECIALS

- COTTAGE GROVE**
Bartels Market 616 Main St.
Bill's Super Market 803 Main St.
Farmers Union Co-op. 49 S. 6th St.
Irish-Swartz 637 Main St.
McCollum's Grocery 1101 E. Main St.
Quality Market 510 Main St.
Smith & Short Grocery 513 Main St.
Stilling's Grocery W. Main St.
Umphrey & Mackin 325 Main St.
- CULP CREEK, ORE.**
Edwards Store
- CRESWELL, ORE.**
Taylor's Store
Farmers Union
- LORANE, ORE.**
Addison Grocery
Mitchell's Grocery
- LONDON, ORE.**
London Mercantile

Big Sale Savings on 39 Plate 'WS' Battery
Reg. \$4.45*
Sale Price **\$3.19**
Exchange price

No. 1 case, fits Ford, Chev, and other cars. Guaranteed for 12 months... serves you for only 27c per month.
A dependable, quick-starting battery at a very modest price. Has plenty of pep and power for popular sized cars. In normal use you will find this QUALITY BUILT battery thoroughly satisfactory. V1210. *List price before trade-in.

Larry H. Levens, Authorized Dealer
WESTERN AUTO SUPPLY CO.
620 Main St. Cottage Grove, Ore. Phone 225