

Women and Children Given Special Attention
Imperial Barber Shop
 P. S. Bukowski

PROFESSIONAL CARDS

DENTISTS
 DR. W. E. LEBOW—Dentist. Office Fifth and Main streets. Hours, 9:30 to 12 and 1 to 5:30. Evenings and Sundays by appointment. Phone office 35, residence 161-J.

PHYSICIANS
 DR. C. E. FROST—Physician and surgeon. Office in Lawson building, 405 Cottage Grove, Oregon.
 H. AXLEY, M. D.—Physician and surgeon. Evenings by appointment. Over Ken's Drug store, Cottage Grove, Oregon.
 A. W. KIME, M. D.—Physician and surgeon. Obstetrics and diseases of women and children a specialty. Office First National Bank Building, Cottage Grove, Oregon. Residence, 1262. Residence address, 1149 west Main.

ATTORNEYS
 HERBERT W. LOMBARD—Attorney at Law. First National Bank building. Phone 94, Cottage Grove, Oregon.
 H. J. RHINE—Attorney at Law and Notary Public. Practices in all courts. Under building, Cottage Grove, Oregon.

LEONARD TRANSFER
 W. L. Leonard, Prop.
 OFFICE AT HOWE'S CONFECTIONERY
 Res. Phone 239-J
GENERAL TRANSFER
 Cottage Grove, Oregon

MILL WOOD
 All Lengths and Planer Ends—Delivered Same Day As Ordered.
 Leave or phone orders to Smith-Short Grocery, Phone 153.
Cottage Grove Fuel Co.
 Hazen & Son
 House phones 168-L and and 5



We Welcome You
 to Portland. 200 comfortable rooms, each with bath. Reasonable rates. Convenient downtown location. Now under personal management of SAM D. ADKISSON
The HOTEL CONGRESS
 PORTLAND, OREGON
 Box letter and invoice files. The Sentinel.

Church News

Church of Christ, Gibbs avenue and Sixth street.—Bible school, 9:45. Church superintendent, the regular graded lessons will start in all primary and secondary grades; morning sermon and Communion of the Lord's Supper, 11. The subject will be "What Is Truth?" Christian Endeavor, 6:30; evening sermon, 7:30, subject, "The God of the Living." There will be an all day meeting Sunday with dinner and annual election. A mid-week workers' conference and session of prayer is held each Wednesday at 7:30. I. G. Shaw, minister.

Methodist Church, W. J. Morrow, minister.—With the reorganization of the Sunday school completed the superintendent announces that this hour, 9:45 a. m., will be more helpful and interesting than ever. There will be a place for every age group. The superintendent judges that each be sure to come to get his first pin and start with others of the school. At 11 o'clock the pastor will have as his subject, "Vicarious Faith." There will be special music by the choir at this service. The intermediate chapter and the senior chapter of the Epworth League will meet at 6:30 in the evening. At 7:30 Loren Harvey will lead the congregation in a live song service. After this the pastor will give a message designed to be helpful to business men.

The Church on the Highway (Baptist), Louis Henry Randle, pastor.—Church school, 10; morning worship, 11; sermon subject, "The First Name Given to Christianity"; young people's social hour, 5:30; young people's devotional hour, 6:30; Thelma Holton will be leader for the junior group and Mabel Thrasher will be leader for the senior group; evening service, 7:30, sermon subject, "Why Confess?"

Presbyterian Services—Pastor Duncan P. Cameron will speak at both services Sunday. At the 11 o'clock service he will preach on "The Chivalry of Jesus," the first of a series of "eight forenoon services." Rev. Cameron has not announced his evening subject.

Christian Science Society—242 Second street. Sunday services at 11 a. m. and evening testimony meeting at 8 o'clock. A free circulating library is maintained in the building. The public is cordially invited to attend the church services and make use of the library.

First Church of Nazarene—Eleventh and Adams, J. D. Burkhead, pastor. Sunday school at 9:45; preaching service Sunday at 11 and 7:30; prayer meeting Wednesday at 7:30.

Church of Christ—(London, 12 miles south of Cottage Grove)—Sunday services; Bible study 10 a. m.; worship 11 a. m.; scripture study 7:30 p. m.

Lutheran Mission—Martin P. Simon, pastor. Adventist church, 405 E. 1st Main. Divine service at 8:30 every first Sunday. All Lutherans, irrespective of nationality, are cordially invited, also others who are without a church home.

Seventh Day Adventist Church—West Main street. Saturday Sabbath school at 9:45 a. m.; church service at 11 a. m.; prayer meeting at 7:30 p. m. Wednesday.

Pentecostal Assembly of God—East Main street, across from P. station. Harry B. Her, pastor. Sunday school at 9:45 a. m.; services at 10:45 a. m.; young people's meeting at 7 p. m.; evangelistic services at 8 p. m.; meetings every night at 8 p. m., except Monday and Saturday, regular service. Tuesday, bible study, Wednesday; prayer meeting, Thursday; services with young people in charge, Friday; street meeting, Saturday at 7:30 p. m.

Free Methodist Church—Corner of Monroe avenue and south Fifth street—Miss Fisher, pastor. Sunday school at 10, forenoon services at 11, evening service at 7:30. Prayer meeting at 7:30 Thursday evening.

Sets 'Em on End
 "What's wrong with Johnny's hair, it's stiff and bristling?" "The doctor calls it emenoidal. It comes from seeing too many hair-raising films."

Camp Lewis Is Scene Of New War Picture

Richard Barthelmess Is Coming in "The Patent Leather Kid" Film.

The fame of historic Camp Lewis, Wash., home of the 91st division during the days of the world war, has been recorded in celluloid for the first time. The fire-hill hills, where rookies were made into soldiers by the thousands ten years ago, are the background for the spectacular war scenes in First National's million dollar production, "The Patent Leather Kid," starring Richard Barthelmess, which will be shown at the Arcade Tuesday and Wednesday, January 8 and 9.

For weeks 60 technicians from the First National studios in Burbank, Cal., were seeking locations, digging fresh trenches, preparing the huge tanks which participated in the maneuvers and rehearsing the actors in their parts so that no slip would occur when the 5000 troops and 800 civilians started their "war."

Troops from the 4th infantry of Camp Lawton joined the garrison of Camp Lewis for the maneuvers, as well as the 7th infantry of Vancouver barracks. A number of U. S. G. members of University of Washington also participated, together with about 500 civilians from Seattle. The latter played German soldiers, as the United States government does not permit regulars to don German uniforms.

War equipment for the men was obtained from surplus stores as far distant as Salt Lake City. About 50 tanks are seen in action, as well as the entire battery of French 75s and other ordnance at Camp Lewis.

"The Patent Leather Kid" is from the stirring war story of that name by Rupert Hughes. It is an epic of the tank corps and will perpetuate the deeds of the men of that division who fought in France. Alfred Santell is the director.

More than 70 members of the cast and the technical staff accompanied Barthelmess north on a special train. Several baggage cars were required to carry the luggage, other necessary equipment and huge sets built in Burbank and shipped north in sections.

About seven weeks of actual shooting were required to make the war scenes. Thousands of pounds of powder were used in the attacks, some of which were made at night. The big feature of the picture is the tanks in action.

Barthelmess plays one of the best roles in his screen career, that of a tough-guy pugilist from the east side of New York, who is regenerated through the war. He has a strong supporting cast including Molly O'Day, sensational screen find, Arthur Stone, Matthew Betz, Raymond and Lawford Davidson.

Passing of the Wolverine
 The wolverine, which has one of the most evil reputations of the animal kingdom, is disappearing in this country.

Long Distance Hauling
Piano Moving a Specialty
CHESTNUT TRANSFER CO.
 Chestnut Brothers, proprietors
STORAGE AND GENERAL TRANSFER
 Office phone 6
 Residence Phone 160-Y
 COTTAGE GROVE, OREGON

County Receipts Given
 Receipts at the office of Walter B. Dillard, county clerk, for the year 1928, totaled \$20,553.51. This is a new record. Last year the total was \$18,530.697. Following are the receipts for each month of 1928:
 January \$1450.11
 February \$1587.85
 March \$1977.25
 April \$1917.35
 May \$1675.75
 June \$1646.70
 July \$1796.55
 August \$1729.00
 September \$1599.95
 October \$1887.85
 November \$1810.70
 December \$1582.15

Box letter and invoice files. The Sentinel.
Inventory record sheets. Sentinel.

Eats Big Steak And Fried Onions, No Gas

"Every time I ate I had terrible stomach gas. Now, thanks to Adlerika, I eat steak and fried onions and feel fine."—Mrs. J. Julian. Just ONE spoonful Adlerika relieves gas and that bloated feeling so that you can eat and sleep well. Acts on BOTH upper and lower bowel and removes old waste matter you never thought was there. No matter what you have tried for your stomach and bowels, Adlerika will surprise you. Cottage Grove Pharmacy.

NOTICE OF FINAL SETTLEMENT.
 Notice is hereby given that the undersigned has filed herein his final account as administrator of the estate of Lucy Frances Heckler, deceased, with the county clerk of Lane county, state of Oregon, and an order has been made and entered of record directing this notice and setting Tuesday the 22nd day of January, 1929, at the hour of 10 o'clock a. m. as the time, and the county court room in the county court house at Eugene, Lane county, State of Oregon, as the place for the hearing of objections, if any to said final account and the final settlement of said estate.
 Dated and first published this 20th day of December, 1928.
 JULIUS HECKLER, Administrator of the estate of Lucy Frances Heckler, deceased.
 HERBERT W. LOMBARD, Attorney for Estate. 420-117

DANCE
 Midway Every Sunday Evening
 8 p. m. to 11 p. m.
 Nine-Piece Orchestra
The Variety Vagabonds

COMING SOON!
KING OF KINGS
 ARCADE THEATRE

Now on Display in our Showroom!

Today you can see the most sensational automobile ever introduced—The Outstanding Chevrolet of Chevrolet History, a Six in the price range of the four!

This new car is now on display in our showrooms and we cordially invite you to come in for a personal inspection!

When you lift the hood and see the new six-cylinder valve-in-head engine you will realize that a new era has dawned for the buyers of low-priced automobiles. Representing four years development and testing, this new power plant is a marvel of advanced design. It develops approximately 32% more power than any previous Chevrolet engine. It displays sensationally greater speed and faster acceleration. And yet, despite this brilliantly improved performance, it maintains Chevrolet's worldwide reputation for economy—averaging better than twenty miles to the gallon of gasoline!

Great Array of New Features
 Matching this spectacular advance in performance is the greatest array of new features Chevrolet has ever announced.

The new four-wheel brakes not only assure positive safety, but are exceedingly quiet in operation. The new two-beam, headlamps with foot control dimming device were never before available in Chevrolet's price class. And so on throughout the entire chassis, you will find feature after feature demanded in the finest automobiles and now offered on the Outstanding Chevrolet.



Distinctive New Beauty
 But, however impressed you may be by the mechanical superiority of the Outstanding Chevrolet, your admiration will reach even greater heights when you study the car's distinctive beauty.

The marvelous new Fisher bodies represent a masterful example of artistic coachwork. Never in Fisher's long and illustrious service to the automotive industry has Fisher style supremacy been more clearly revealed!

The Roadster	\$525	The Sport Cabriolet	\$695
The Phaeton	\$525	The Convertible Landau	\$725
The Coach	\$595	Sedan Delivery	\$595
The Coupe	\$595	Light Delivery Chassis	\$400
The Sedan	\$675	1 1/2 Ton Chassis	\$545
		1 1/2 Ton Chassis with Cab	\$650

All prices f. o. b. Flint, Mich.

Come in and see these Beautiful New Cars on display in our showrooms

Cottage Grove Motor Co.
 JACK MAULDING, PROP.
 QUALITY AT LOW COST

Even a thin layer of hard carbon

— as little as 1/32 of an inch — will cause you trouble now

PRE-IGNITION knocking, power loss. Valves held open by carbon chips. Engine wear from gritty bits that grind through it. These are the troubles caused by carbon.

And the coming of high-compression motors has made the condition worse! In new-day engines a dime laid flat on the piston bumps the top of the cylinder—no room for carbon!

Carbon comes from burned oil; and oddly enough, even the most expensive oils often form the most carbon. Hard, flint-like carbon, too—the kind that does damage.

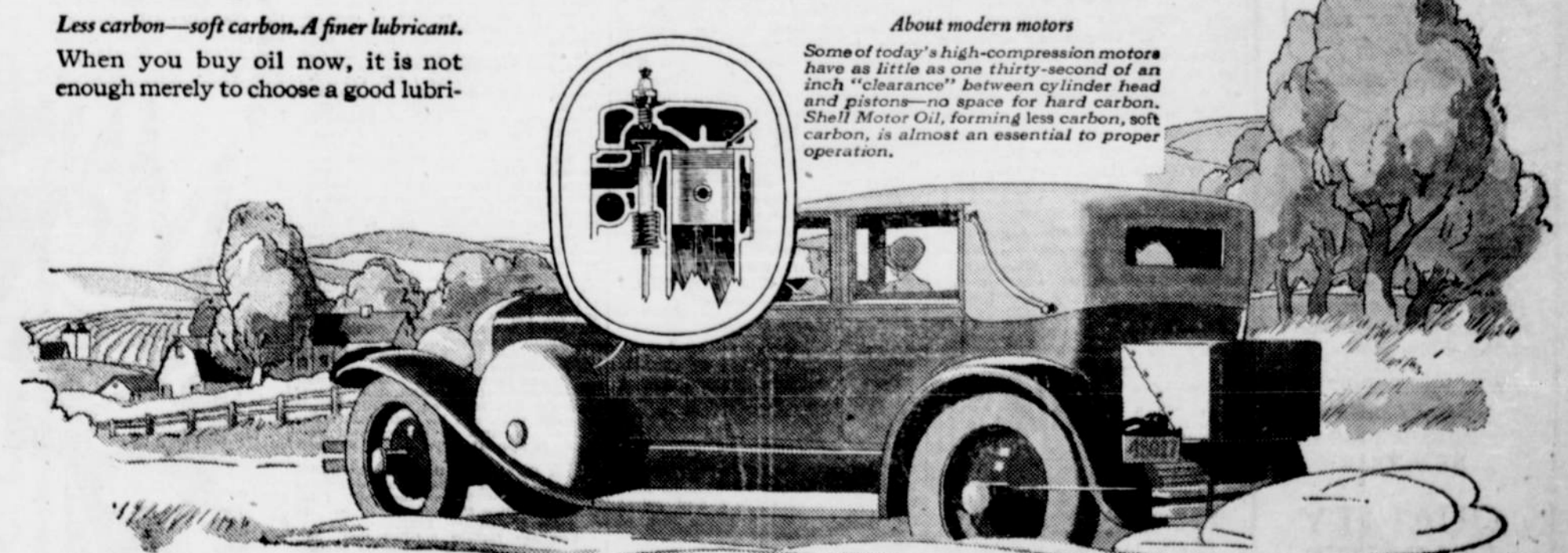
You should know what sort of a carbon-former it is.

Shell Motor Oil forms only 1/3 to 1/5 as much carbon as the costliest oils; and the little it does form is soft—a kind that blows away through the exhaust!

It is made by a new high-vacuum process—no old-style stills that tend to "scorch" and weaken motor oil. The new Shell process protects it, keeps all its sturdy body and high heat-resistance. Produces a finer, smoother lubricant, remarkably free from the carbon-forming fault so common in ordinary oils.

Change to Shell Motor Oil the very next time you drain the crankcase. Buy it at yellow and red Shell signs when you need an extra quart.

About modern motors
 Some of today's high-compression motors have as little as one thirty-second of an inch "clearance" between cylinder head and piston—no space for hard carbon. Shell Motor Oil, forming less carbon, soft carbon, is almost an essential to proper operation.



SHELL MOTOR OIL
 SHELL HAPPYTIME, a worth while morning broadcast three times a week over KOMO, KHQ, KGW, KPO, and KFI. Eight to nine A. M. Monday, Wednesday, Saturday—tune in!

GRAY'S CASH & CARRY

Free City Delivery Phone 53
Trade at Gray's and be assured of a square deal, courteous treatment and prompt service.

Bear Brand Hardwheat Flour 49-lb. Sack \$1.79	Valley Flour 49-lb. Sack \$1.69	Salad Oil In Bulk 35c qt. \$1.35 Gallon
Navel Oranges , sweet and juicy, 3doz. 43c Bananas , 4 lbs. 25c	Mackerel Tall Can 15c	Tuna Fish 7-oz. Can 15c
Gray's Coffee , 1 lb. 43c ; 3 lbs. \$1.25 Bacon Back , per lb. 28c Maplkist Hams , Half or Whole . . . 29c	Minced Clams 7-oz. Can 15c	

It Always Pays to Trade at Gray's