

Factories Needed to Use Cheap Waste for Making Many Items

Cottage Grove has what, with reforestation, may well be considered an unlimited supply of standing timber. The greater part of the full grown timber is ripe and ready for cutting. Several large mills and many small ones are working away at this vast body of timber, but are making no great

showing toward reducing the amount. There is room for more large mills to work up the large tracts and a proper proportion of small mills to cut the odd areas left by the big operations.

In all lumber cutting operations there is an unavoidable enormous waste. This waste, which consists of trees too small for economical cutting in a large mill, tops, live shells of overripe trees, trees other than fir and cedar which are not suitable for the manufacture of lumber, such as alder, balsam, chinquapin, laurel and others, is waste only because there are no factories available to which it may be shipped. The small trees, tops and shells are excellent material for the manufacture of such articles as spoons, paint brush handles, crossarms, mirror and brush backs, clothespins, novelties, turned work and any number of similar items.

There is no better wood for soft wood furniture than alder, large bodies of which can be reached by truck or railroad. Alder is splendid for pulley making, as it has the desirable tendency to cling to a belt. Chinquapin, belonging to the chestnut family, and laurel make beautiful interior finish and work up splendidly in furniture.

A great field is open here to capital for factories to make use of what is now waste material and is left in the woods or goes to the burners. Transportation facilities are such as to make this location desirable for the manufacture of articles in which freight rates to distant points are an important factor.



Greatest of Opportunities Here For Manufacture of Pulp, Paper

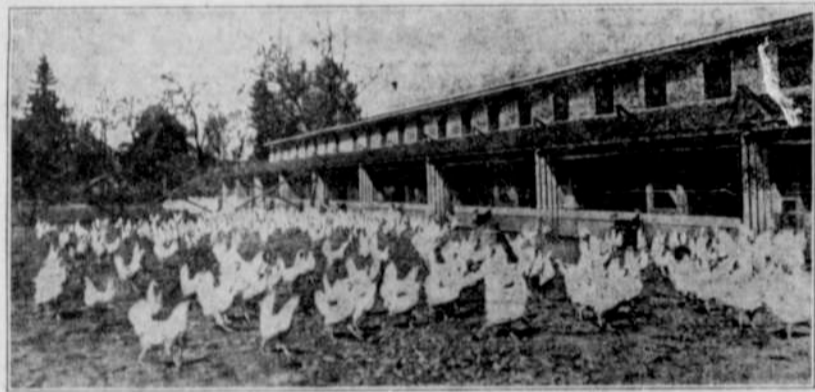
The paper industry is moving with amazing swiftness to the Northwest coast. Scores of mills, large and small, have been erected on the coast within the past few years. Exhaustion of raw material in Wisconsin, New England and other central and eastern states and the export duty imposed by Canada on pulp shipped to this country are the moving factors in sending the paper industry here, although the great timber resources of the Northwest coast and rail and water transportation facilities are an important economic advantage that have brought great prosperity to the pioneer mills of the coast.

Nowhere else, not even on the Northwest coast, is there the assured permanency for the pulp and paper industry that is to be found in the Cottage Grove country. Two thousand square miles of timber, the great bulk of which must be handled through this gateway, reforestation under government supervision, rapid growth, diversity in varieties of timber, mild,

humid climate, all make for ideal conditions for pulp and paper manufacture.

Spruce, hemlock and many other trees which are the backbone of the pulp and paper industry, are here in abundance. Right now the more than 20 sawmills operating in this section produce a surplus of slabs sufficient for a large sized paper mill operation.

Cottage Grove is on the main line of the Southern Pacific railway and surely will be an important point on the extension of the Hill lines in western Oregon which is certain to come. The Oregon Pacific & Eastern railway extends 25 miles southeast into heavy bodies of timber, while the standard-gauge Chambers railway, under construction to the west, will surely go to tidewater, probably at Winchester bay, where the Umpqua discharges its flood into the Pacific ocean and where the United States government has under way a million dollar harbor improvement.



COTTAGE GROVE POULTRY RANCH.



COTTAGE GROVE ORCHARD SCENE.

Opportunities Here for Larger Breeds Chickens

Mild and equable climatic conditions permit fresh air for chickens at all seasons and green feed, which facilitates egg production, grows the year round. Shipments of eggs are more than 3000 cases a month and spring shipments of baby chicks to all points of the United States are large. Several flocks of heavy laying White Leghorns have been developed here and baby chicks and fully developed pullets and cocks from these flocks bring high prices.

Although the Cottage Grove community is one of the largest egg producing centers of the west, the raising of larger breeds has been

neglected. There is an excellent market both north and south for heavy poultry and this field is practically open to the chicken farmer.

Cottage Grove Splendid City in Rich Setting

Cottage Grove is strategically located in a beautiful setting at the extreme southern end of the Willamette valley and is the geographical and commercial center of several populous valleys having no other outlet. The population of its trade territory is more than 6000.

Lumbering is Cottage Grove's principal industry. Some 30 mills employ more than 1000 men, with an annual payroll of over a million

and a quarter. This year the Anderson & Middleton company will start on its contract with the federal government which requires cutting 250,000,000 feet in ten years. Incidentally, this will be the federal government's first experiment in perpetual production. This 10-year cut will be on the first of 10 units to be put on the market at 10-year intervals. At the end of 100 years it is expected that the unit upon which cutting starts this year will be ready for recutting. It is probable that the city's lumber payroll will be doubled within two years. There are 34 billion feet of timber tributary to Cottage Grove. Besides the magnitude of the lumbering operations which this amount of timber makes certain, opportunities are offered for investment in wood manufactur-

ing plants, box factories, wood novelty plants and similar enterprises. Cottage Grove has a modern accredited school system, with a high school building, a gymnasium and classroom building, two grade buildings and a practice house. The enrollment is over 1000 and a faculty of 32 teachers is employed. Included in the courses offered are manual training, domestic science, commercial and agriculture.

Ideal Conditions Here for Dairying, Stockraising

Climatic conditions of the Cottage Grove section are in many ways ideal for the pursuit of the dairy and stock raising industries and there are here many valuable herds of beef cattle. The temperature seldom falling below freezing, provision against winter weather can be the simplest, while there usually is green feed the year round. The city has an up-to-date creamery which manufactures a high grade of butter and ice cream.

There are here numerous herds of sheep and goats and Cottage Grove is an important point for the shipment of wool and mohair.

Berries and Small Fruits Grow Proficably, Easily

No other section of the west is better adapted to the production of small fruits than the Cottage Grove country. Prunes, cherries, pears, loganberries, blackberries, strawberries, etc., produced and packed here are finding favor in the markets of the world. A ready market for these fruits is provided by a modern cooperative fruit and vegetable cannery. The plant has made an enviable reputation for the quality of its blackberries and beans.

First National Bank Progresses Remarkably

Pioneer Institution, Founded 37 Years Ago, Now Has Resources of a Million Dollars.

From a small beginning the First National Bank has steadily forged ahead until today it ranks as one of the strongest banking institutions of the state.

One of the best concrete evidences of the growth and prosperity of Cottage Grove is the continued progress of such a bank as the First National.

This institution has grown from a small beginning in 1889 to its present resources of a million dollars in round numbers.

The strength and character of a bank are but a reflection of the strength and character of the men directing its affairs. The Cottage Grove First National bank is governed and its business is directed by its officers, all of whom are local men and known for their business ability.

These men are responsible for the welfare of the institution. They are all men who are fitted to bring success to any institution with which they might be connected, and they are also personally interested in Cottage Grove and the development of the surrounding district.

The business of this bank has been built upon the solid foundation of their conception of banking business. The men in charge of this bank realize that the prosperity of their institution depends directly and wholly upon the people of this city and district, and this bank makes it its business to help the people to prosper and to develop the resources.

There is probably no business or development of a beneficial character which does not at some time pass through a period when it is found necessary to have the assistance and accommodation of a strong banking institution behind it to tide it over its temporary difficulties. The First National bank enjoys the reputation of being a conservative bank which is at the same time most liberal in its treatment of its patrons, affording them every convenience and assistance consistent with sound banking.

The First National is a member of the federal reserve system. No better or stronger guaranty of the standing of a banking institution could be possible than membership in this system, which represents one of the greatest progressive financial steps that has ever been made for bringing together the leading banking institutions of the country under a national head. Aside from guarantying the safety of deposits, this system also aids

the government in its financial problems.

The potent "Member of Federal Reserve Bank" wherever it is seen is like a gold seal of the government as a recognized guaranty of safety, efficiency and worth.

Both Mr. Eakin and Mr. Wheeler, the responsible heads of this institution, are among Cottage Grove's most prominent citizens. Mr. Eakin has been city treasurer for so long that no one remembers who else has ever held the office. Mr. Wheeler served 12 years on the city council and completed his service to the city by serving two years as mayor.

Local Laundry Is Most Modern One

Business Has Become Important One Under Management of J. D. Wirth.

Since purchasing the Cottage Grove Steam Laundry in February, 1922, J. D. Wirth has steadily improved the plant by adding new machinery and equipment until today this laundry stands as one of the best and most modernly equipped plants in this section of the state.

Mr. Wirth attributes a large share of the success of his establishment to the fact that each employe is thoroughly trained in his or her particular work until he or she becomes an expert, after which he or she is put in complete charge of one of the many devices necessary in conducting a modern laundry.

The chief aim of the Cottage Grove Laundry is making women happy by relieving them of the drudgery of doing the family washing. That this aim has been largely achieved is shown by the tremendous patronage Mr. Wirth's laundry enjoys.

By providing an economical and effective method of handling the family washing the Cottage Grove laundry has done far more than is generally realized toward striking the "blue Monday" from the calendar and toward lengthening the back-breaking, unhealthful toil that has been responsible for so much premature old age in our women folk.

Mr. Wirth has spared no expense in selecting the equipment placed in his plant so as to make possible the extremely economical advantage to the public in using his laundry.

The equipment of his plant has been selected with the view of turning out better work and at a minimum expense, and so as to prolong the period of wear to garments.

The Cottage Grove laundry makes a specialty of fine work, handling the most delicate laundry and cleaning tasks to the entire satisfaction of the most exacting customer.

Mr. Wirth invites those who are not familiar with the work of his laundry to give them a trial, assuring them that they will be very pleased with the high quality of work turned out.

The rapid increase in business that the Cottage Grove Laundry is enjoying is due to more than ordinary ability in the conduct of the affairs of the institution.

Mr. Wirth is a prominent business man of Cottage Grove, a member of several fraternal organizations and an active worker in any movement that is for the betterment of Cottage Grove and community.

Dodge Car Sales New Management

Home of Well Known and Popular Car Is Purchased by R. A. (Rube) Morris.

According to present indications the agency for Dodge Brothers motor cars, under its new management, will have a record year.

That the efficient, courteous and prompt service being rendered is paying an important part in the rapid growth of this enterprise is shown by the ever-increasing list of satisfied customers.

The Dodge Brothers garage is the local agent for the universally popular Dodge Brothers automobiles. This company, under its new management, is rapidly developing one of the greatest auto selling agencies in Cottage Grove. We are under the impression that probably the greatest number of cars ever handled by a single agency in this city will be handled by Dodge

Brothers garage this year. One of the reasons for this will be because of the effort on the part of the management to extend every service possible to its patrons.

The purchaser of a Dodge Brothers automobile can rest assured that he is purchasing the most dependable, durable and economical car that can be bought for the price paid.

The popularity of Dodge Brothers automobiles in this section is not excelled by any other car. The adaptability of the Dodge to this section has been proved under the most trying conditions. The new Dodge includes all the better features of the past and a great many additional ones.

Dodge Brothers service and garage also handles a complete stock of accessories, including tires. It also, for the convenience of the public, maintains a battery service for all makes of cars.

The modern garage and display rooms occupied by this establishment include every facility for the handling of any business transaction in the extending of satisfied service to automobile users in general.

Mr. Morris, manager of this company, is one of the younger business men of Cottage Grove and is rapidly forging ahead as one of its most valued citizens.

It is to such establishments as this that the credit for the commercial growth of Cottage Grove must go, and it is through the efforts of such men that the future growth of the city is assured.

Manufacturing Plant Leading Enterprise

Sash, Doors, Interior Trims, Shingles, Etc., Are Manufactured at Home.

The Cottage Grove Manufacturing company, located at the foot of Main street, is one of the city's pioneer and leading industries.

This company first started operation in 1889, but it was not until 1917 that it showed any marked degree of expansion and development. At this time C. A. Stevens, then of Oakland, Ore., purchased a large interest in the company together with W. L. Hatch, who is now the vice president.

It was largely through the efforts of these men that this factory grew and prospered until today it stands as one of the outstanding enterprises of this section. The reorganization of the company has made the following men the officials: C. A. Stevens, president; W. L. Hatch, vice president; L. C. Michener, treasurer; Horace Hatch, secretary.

There are few, if any, cities the size of this that have the advantage of the location in their midst of such an establishment as this well known firm maintains.

By reason of their modern facilities they are able to execute all classes of work and to furnish excellent service with promptness and dispatch. Their producing power enables this concern to give large quantities at prices so low that they offer their customers astonishing values in building supplies of every description.

The power of such large producers cannot be too emphatically stated. It gives them a prestige and advantage which accrue to the benefit of their customers.

Shingles, doors, casings, lath, roofing, but what is the use of trying to give a brief review of the stock of the concern? Suffice it to say that they have absolutely everything in the lumber business and building materials line and that their work is of a class unsurpassed in the country.

Throughout the country it has come to be known as headquarters for all these many things and by fair and honest dealings with the contractors and public, this company has not only increased its patronage but has held its old customers for years.

The president of this company, C. A. Stevens is one of those sturdy aggressive men who commenced life without a dollar. By close application and perseverance he has reached that point in life where he can sit back and watch the result of his early efforts with a peace and contentment of mind that comes to all who have accomplished the objective they set for themselves in early life. Mr. Hatch, the vice president of this concern, is another man who has merited the success his company has achieved.

Young Firm Agent For Chevrolet Car

Efficient and Expert Service Rapidly Winning Favor of Motor Loving Public.

The fine garage and automobile display room is one of the up-to-date concerns of Cottage Grove.

It is a tribute to the keen business judgment of both Mr. Hanson and Mr. Maulding that they again, upon entering business in Cottage Grove, selected the Chevrolet as the car they will sell.

The Chevrolet, always in the van of progress, has many new features,

and is the most completely equipped auto that is sold under a thousand dollars.

In the days of the return to normalcy there is no line of cars that has drifted into popularity faster than the one bearing the famous Chevrolet name. The people have come to recognize that it has always held its own against all comers and there is no auto firm in this part of the state that has come to the front faster than has the firm of Hanson & Maulding.

The new Chevrolet has many added improvements besides the new body and its one-man top. The valve-in-head motor and its superior mechanical equipment make the Chevrolet a car in a class by itself. It has splendid high-back seats, heavily upholstered and as comfortable as a Morris chair. The top is made of heavier material and has the latest style of curtains.

The Chevrolet bodies are made exclusively by the Fisher body corporation, which is now a part of the General Motors body corporation, which is now a part of the General Motors corporation. Whatever use you may have for another car you will find a Chevrolet will more than fill the bill. Models designed for family use, for the business man or for trucking—each may be seen at the Hanson and Maulding showroom.

The Chevrolet utility express is the lowest priced quality truck in the world, capable of fast, heavy duty service. Long grades and deep mud are mastered by it without racing the motor because the three speed transmission provides correct gear ratio to meet any condition of load or road.

The Hanson & Maulding service department is most efficient and the people of Cottage Grove and community know that when they do need service this firm will see that they get it promptly and with a guarantee that all work must be satisfactory or money will be refunded.

Ford Motor Car Is Popular One Here

O. E. Woodson, Agent, Brings Business to Field by Loyalty and Service to Public.

The authorized Ford products dealers establishments have become recognized the country over as among the greatest assets of the communities in which they are located, and in no town is this more true than in Cottage Grove. The Ford products are handled exclusively here by Woodson Brothers, who maintain one of the best down to the minute automobile sales and service organizations one will find in any community of similar size.

O. E. Woodson, proprietor of Woodson Brothers, is a keen and loyal business man, who is thorough in his efforts to give his every customer that satisfaction that will not only retain the patron's business, but such as will make the customer a loyal one to the establishment and a constant booster for the Ford products.

The Ford products have come to be too well and favorably known to need detailed comment to point out their superior worth and high value at their selling prices, and the class of service which follows every sale by this firm has been such as to add to the popularity of the line of products.

The building which is occupied by the Ford agency is a modern, new building which was designed and constructed to handle the exceedingly large business which it now enjoys. The display room is one that is light and of ample size to permit not only displaying the automobiles and tractors, but to allow room for customers to inspect the machines. The stocks department is also a large one and is stocked with a complete line to take care of every need of the owner and user of any of the Ford products.

The garage and service department is in keeping with the sales room and parts department. In the design and construction it follows the latest development and is a model daylight factory working plant. The lighting equipment is such as to also make night working conditions practically as convenient for the workers as daylight work. Every bit of equipment that will tend to make the work output better or make the handling more economical has been provided. This firm employs several men who are experts and who have specialized in working on Ford products. They have either been trained in one of the Ford company plants or under a master mechanic who has had special departmental training in a Ford plant.

The Ford company from its very start assumed a position of leadership in the production of good automobiles at a price which every one realized as a reasonable one. The Ford car is selling today at a price lower than ever before, a substantial reduction having recently been made. The continued improvement of the Ford automobile has made it the universal car. Today the Ford automobile stands out as one of the greatest values at its

(Continued on page 4.)



BIRD'S EYE VIEW OF COTTAGE GROVE FROM SUMMIT OF MOUNT DAVID.