

Cottage Grove Sentinel

Mondays and Thursdays
Bode & Smith, Publishers
Albert Bode, Editor
C. G. Campbell, News Editor

A first-class publication entered at Cottage Grove as second-class matter

Business Office, 25 North Sixth

SUBSCRIPTION RATES
By mail (Cash in advance)
One year, \$2.75 (Three months, .80)
Six months, 1.50 (One month, .50)

BY CARRIER
One month, .30
Four months, 1.10
Six months, 1.60
One year, in advance, 3.00

Member of National Editorial Association
Oregon State Editorial Association
Oregon Newspaper Conference

ANOTHER ONE FOR THE MILL MAN.

As though the saw mill man was not having troubles enough with a low market and weak demand for his products, Secretary Works, of the interior department, makes a suggestion that would put many operators out of business.

Withdrawal of national forest land would not work as much direct hardship as the withdrawal of wagon road grant lands.

In the first place, the topography of western Oregon is such that it is not possible to progress diagonally across one even section to another, regardless of how easy that may appear to government officials back in Washington with flat maps before them.

Many sawmill operations have been started in Lane county under the belief that the government

would continue its policy of selling its timber wherever necessary to the success of a sawmill operation. For the government to at this time say that every other section is closed to operations, as it can do, is plain confiscation of many mill properties.

Lane county would be affected as greatly as any county in the state by the interference with sawmill operations suggested by the secretary of the interior.

Small operators suspect that several large operators, who already have their holdings blocked, that is, they have secured all the timber in a given area, and would not be affected by the proposal made by Secretary Works, are behind the move to take the government timber off the market.

The wagon road grant lands were taken back by the government upon the ground that their former owners had not disposed of them and were not trying to do so rapidly enough for the welfare of the state.

Commercial and civic organizations should energetically oppose the action proposed by Secretary Works.

CHRISTMAS BOX TO GO TO VETERANS' HOSPITAL

The auxiliary of the American Legion is preparing to pack a Christmas box to be sent to the veterans' hospital in Portland. All legion members and women of the auxiliary are requested to bring their donations not later than Friday, December 18, to the home of Mrs. E. T. Blakely.

The auxiliary will appreciate gifts from anyone. Articles most desired by the hospital are trays, cloths, white rag rugs, 13 by 23 inches; waste paper baskets, hot water bottle covers, socks, B. V. D.'s, pajamas, cigarettes, fruits and books.

Society

Mrs. H. A. Miller, Mrs. Clara Burkholder and Mrs. D. H. Hemmway were hostesses Thursday at a meeting of the Constellation club. The dining room in Masonic hall was tastefully decorated with holly and miniature Christmas trees and radiated a true Yuletide atmosphere.

Of much local interest to their many friends was the announcement of the engagement of Miss Lois Compton, daughter of Mr. and Mrs. N. E. Compton, to Brighton Leonard, son of Mr. and Mrs. S. E. Leonard.

Mrs. Leontine Lusk of Eugene and J. R. Adams of Portland were married December 3. Mr. Adams, who is with the White Truck company, has since been transferred to Los Angeles and he and Mrs. Adams have moved there.

Miss Lucy Case, of the extension department of O. A. C., who conducted a meeting last week in the Farmers' union hall at Hebron, entertained Mrs. Clara Burkholder and daughter, Miss Belle, at dinner at Hotel Bartell.

Friends and neighbors of H. L. Fowler of Silk Creek pleasantly surprised him Saturday evening, the occasion being a birthday anniversary.

Mrs. Geneva Dyott had as luncheon guests Thursday noon Mrs. F. E. Dunn and Mrs. George Hall of Eugene and Mrs. Mabel Bean of Portland.

A Christmas tree will be the main feature of the Utopia club meeting at the home of Mrs. A. A. Richmond Thursday, December 17.

The Joker club will meet at the home of Mrs. A. W. Swanson Thursday evening, instead of the regular meeting night.

NOTICE OF SALE OF GOVERNMENT TIMBER.

GENERAL LAND OFFICE, Washington, D. C., Nov. 21, 1925. Notice is hereby given that subject to the conditions and limitations of the acts of June 9, 1916 (39 Stat., 218), February 26, 1919 (40 Stat., 1179), and June 4, 1920 (41 Stat., 758), and pursuant to departmental regulations on April 14, 1924 (50 L. D. 376), the timber on the following lands will be sold Jan. 18, 1926, at 10 o'clock a. m. at public auction at the U. S. land office at Roseburg, Oregon, to the highest bidder at not less than the appraised value as shown by this notice, sale to be subject to the approval of the Secretary of the Interior. The purchase price, with an additional sum of one-fifth of one per cent thereof being commissions allowed, must be deposited at time of sale, money to be returned if sale is not approved, otherwise patent will issue for the timber, which must be removed within ten years. Bids will be received from citizens of the United States, associations of such citizens, and corporations organized under the laws of the United States or any state, territory, or district thereof only. Upon application of a qualified purchaser the timber on any legal subdivision will be offered separately before being included in any offer of a larger unit. T. 29 S., R. 9 W., Sec. 5, lot 1 fir 2010 M, hemlock 60 M, cedar 40 M, lot 2 fir 3130 M, hemlock 75 M, cedar 285 M, SE 1/4 NE 1/4 fir 1555 M, hemlock 45 M, cedar 250 M, SW 1/4 NE 1/4 fir 1830 M, hemlock 200 M, cedar 300 M, lot 3 fir 3120 M, hemlock 150 M, cedar 195 M, lot 4 fir 2650 M, hemlock 170 M, cedar 180 M, SE 1/4 NW 1/4 fir 1490 M, hemlock 70 M, cedar 130 M, SW 1/4 NW 1/4 fir 1910 M, hemlock 150 M, cedar 90 M, NE 1/4 SE 1/4 fir 1500 M, hemlock 140 M, cedar 280 M, NW 1/4 SE 1/4 fir 1240 M, hemlock 100 M, cedar 180 M, SE 1/4 NE 1/4 fir 1640 M, hemlock 150 M, cedar 320 M, SW 1/4 SE 1/4 fir 1500 M, hemlock 110 M, cedar 280 M, NE 1/4 SW 1/4 fir 1670 M, hemlock 130 M, cedar 130 M, NW 1/4 SW 1/4 fir 2130 M, hemlock 130 M, cedar 150 M, SE 1/4 SW 1/4 fir 2050 M, hemlock 140 M, cedar 200 M, SW 1/4 SW 1/4 fir 2240 M, hemlock 100 M, cedar 100 M, Sec. 7, NE 1/4 NE 1/4 fir 1200 M, cedar 40 M, NW 1/4 NE 1/4 fir 1440 M, cedar 40 M, NE 1/4 NE 1/4 fir 2000 M, cedar 250 M, SW 1/4 SE 1/4 fir 2120 M, cedar 200 M, NE 1/4 NW 1/4 fir 3180 M, cedar 40 M, lot 2 fir 3444 M, cedar 50 M, SE 1/4 NW 1/4 fir 2500 M, cedar 180 M, lot 2 fir 3620 M, cedar 90 M, NE 1/4 SE 1/4 fir 1920 M, cedar 420 M, NW 1/4 SE 1/4 fir 2380 M, cedar 220 M, SE 1/4 SE 1/4 fir 490 M, cedar 220 M, SW 1/4 SE 1/4 fir 340 M, cedar 340 M, NE 1/4 SW 1/4 fir 3200 M, cedar 140 M, lot 3 fir 3080 M, cedar 375 M, SE 1/4 SW 1/4 fir 480 M, cedar 490 M, lot 4 fir 2270 M, cedar 890 M, Sec. 9, NE 1/4 NE 1/4 fir 2050 M, hemlock 170 M, cedar 120 M, NW 1/4 NE 1/4 fir 2700 M, hemlock 180 M, cedar 135 M, SE 1/4 NE 1/4 fir 2480 M, hemlock 80 M, cedar 40 M, SW 1/4 NE 1/4 fir 2430 M, hemlock 160 M, cedar 90 M, NE 1/4 NW 1/4 fir 2840 M, hemlock 165 M, cedar 155 M, NW 1/4 NW 1/4 fir 3120 M, hemlock 260 M, cedar 160 M, SE 1/4 NW 1/4 fir 2950 M, hemlock 220 M, cedar 175 M, SW 1/4 NW 1/4 fir 3080 M, hemlock 150 M, cedar 350



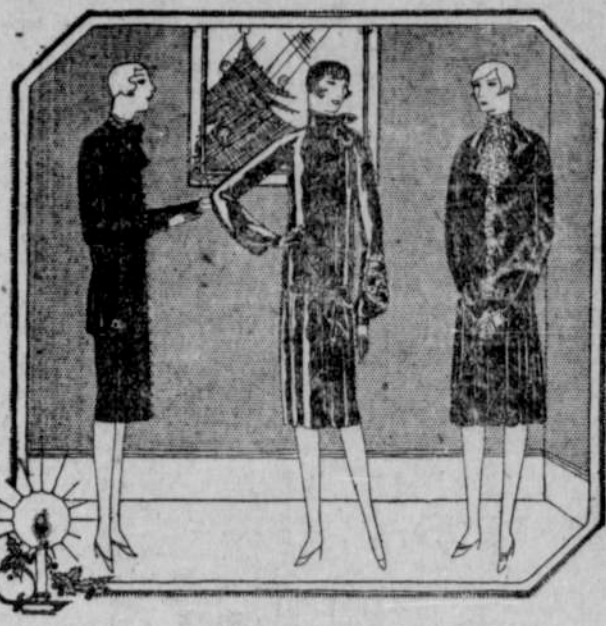
Shop Here Today

We Invite You to Shop Here Today

You Will Find Here At Umphrey & Mackin's A Host of New Merchandise Suitable For Gifts At Most Reasonable Prices.

A LARGE SELECTION OF NEW SILK DRESSES AND WOOL DRESSES JUST ARRIVED PRICED AT MANUFACTURER'S CLEARANCE SALE PRICES! \$7.85 TO \$18.50

These dresses are all new models and consigned to us by a manufacturer who is anxious to make a complete clearance. It is no over-statement on our part when we claim that the sale price here on these dresses are a saving to you of \$5 to \$10 per dress if they were to be sold in the regular way.



NEW SILK LINGERIE JUST ARRIVED THIS WEEK FOR YOUR GIFT SELECTION

Added to your already ample selection of lingerie stocks is this new shipment just arrived Monday morning and is one more reason why we urge the ladies of this vicinity to have a look at these very pretty and attractive underthings.

- Included in the display for your convenience are—
New lace trimmed envelope chemise at \$2.95
Pure flax silk pongee bloomers at \$2.95
Rayon silk and pure silk vests and bloomers 98c to \$2.65
Baromette satin and Rayon silk princess slips in a large selection of wanted colors and shades, priced \$3.95 to \$4.95



Closing Out All Toyland at Underprices

GENUINE SAVINGS OF ONE-FOURTH, ONE-THIRD, ONE-HALF AND MORE

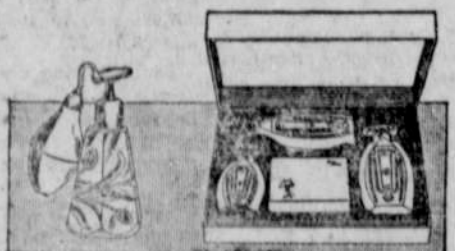
Bring your list of needs of Toyland for the children and you will be genuinely and agreeably surprised how far your money appropriation for the toy list will go at our toy department—all toyland is being closed out at this store at cut prices for entire clearance and now while you appreciate the reduced prices most—the stocks are limited—don't wait.

- Dolls priced...10c, 25c, 45c, 98c, \$1.25, up
A. B. C. blocks and picture books in sets...5c, 8c, 10c
Dominoes and checkers...10c and 15c
Games, picture books, mechanical toys—all reduced in price.



Umphrey & Mackin's THE QUALITY STORE

A MASTER PERFUME CARA NOME (DEAREST NAME) IN GIFT PACKAGES



This exquisite perfume holds today a proud pre-eminence in the world of fashion, enjoying the patronage of the most fastidious women in their quest for an individual perfume.

In the production of Cara Nome Perfume and toilet accessories nothing is too costly as an ingredient if, by its addition, greater fascination, individuality or delicacy is possible to attain.

Surely your dearest friend will appreciate a beautiful satin-lined Gift Box of Cara Nome Toilet Articles. Come in and let us show them to you.

KEM'S for DRUGS

C. J. KEM Prop. The REXALL Store Cottage Grove Sixth and Main

Our Building Material Line Includes—

- Cement, Lime, Plaster, Brick, Fire Brick, Fire Clay, Metal Lath, Corner Beads, Shingles, Drain Tile, Sewer Tile, Concrete, Sand and Gravel, Plastering Sand, Zouri Store Front Fittings, and other things too numerous to mention.

No Charge on City Deliveries

Godard & Randall

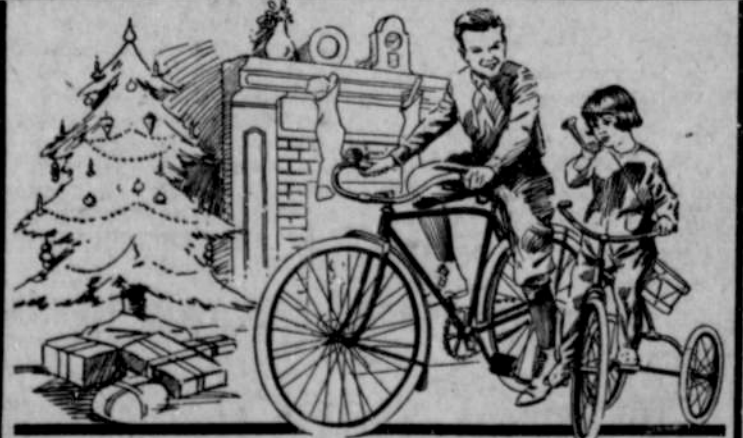
Just North of S. P. Station—Phone 100

Kraut and Dills

Place your orders early for dill pickles and kraut for delivery the first of the week.

- PRICES
Dill pickles, the dozen 25c
Dill pickles, quart jars 30c
Kraut, per jar 25c

C. A. KING VEGETABLE RANCH PHONE 1F5



DON'T FORGET

There is nothing the youngsters will like better than a BICYCLE, WAGON, SCOOTER OR A KIDDIE KART FOR CHRISTMAS.

I have a full line at reasonable prices. Make a small deposit and I will set article away for you until Christmas without extra charge. I also carry the parts and do the repair work.

HARRY RENTLE THE BICYCLE SHOP 400 Main Street