

## CHINA AND GLASSWARE

A splendidly selected line suitable for Christmas Gifts

### HERE ARE A FEW OTHER SUGGESTIONS

Phoenix Mufflers                      Traveling Bags  
 Furs for mamma and baby  
 Hand Bags                              Hat Pins  
 Barretts and Hair Ornaments  
 Cuff and Collar Buttons              Garters and Arm Bands  
 Stocking Caps                         Table Linen  
 Golf Gloves and Mittens for all hands  
 Bear Cloth Hoods and Silk Caps  
 Silk Handkerchiefs and Mufflers  
 Suspenders and Ties in single boxes  
 Moccasins, bed room and dressing Slippers  
 Cutlery and Scissors  
 Christmas Candy and Fruit  
 Fresh Groceries and Vegetables for your Christmas dinner

## Burkholder - Woods Co.

THE DAY-LIGHT STORE

## WELL PAVED STREETS

are of great value to a community and enhance the value of abutting property more than any other improvement

CAN BE PAID FOR IN 10 ANNUAL INSTALLMENTS so that the cost per year is small.

The increased valuation is demonstrated in the following cities in the west where the Bitulithic Pavement has been laid:

Eugene	Ashland	Walla Walla
Salem	Albany	Vancouver
Medford	Portland	Boise
Roseburg	Pendleton	Nampa
Lewiston	Puyallup	Baker City

and many other cities

It is a general proposition that two years after a street has been paved

**THE PROPERTY CAN BE SOLD FOR DOUBLE** the price at which it is offered before paving, and yet at that time only two of the ten payments have been made. Examine

### THE BITULITHIC PAVEMENT

in any of the above cities and see for yourself why

**BITULITHIC IS BEST BY EVERY TEST**

## WARREN CONSTRUCTION COMPANY

Main Office 317 Beck Building                      PORTLAND, ORE

## CHRISTMAS AT THE CHURCHES

Great preparations are being made by the Presbyterian church for the approaching Christmas services. On Friday evening the Sunday school will hold its exercises, the children of the school presenting the little play "Santa's Dream." They will be assisted by the choir, which has been enlarged and has been practicing for the past two weeks under the supervision of Mr. Wooley. The teachers of the Sunday school are very much gratified to see the way the parents of the children are taking an interest. While the occasions on which children of the church have an opportunity to take part in the work are few, Christmas being one of them, it is always noticeable that on such occasions the parents and friends rally to their support. A cordial invitation is extended to all to be present on Friday evening, whether they are connected with the church or not, and especially is the invitation extended to those who may happen to be away from home on that day to meet with the pupils and parents to observe the festivity of the Birth of Christ. The parts in the play are taken as follows: Leader, Miss Neva Perkins; Santa Claus, F. H. Rosenberg; Brownies, Claude Sherman, Elwyn Miller, Samuel Veatch, Earl Grover, Willie Holderman; John, Marvel Randall; Harry, Randall; Tom, Harold Venske; Ben, Dale Waytt; Fannie, Hazel Ostrander; Annie, Edna Elledge; Grace, Florence Hemenway; two little girls, Francis Rosenberg and Arma King; two little boys, LaMar Piper and Bernard Piper; Kings daughters, Eva Richmond and Blanche Veatch; three little maids, Clara Rosenberg, Edith Rosenberg and Dayla King; two Norwegian girls, Dale Groves and Alta Thomas; Japanese girls, Ethel Sherman and Rydal King; May, Flora Blewer.

Following the exercises, which will also be participated in by the pupils of the primary department, will occur the distribution of presents from the Christ-

mas tree. For the Christmas day exercises, which will be held on Sunday, special music has been prepared and the Rev. S. C. Adams will preach on the "Nativity of Christ." The young people of the Christian Endeavor have undertaken the decorations of the church, and something unique is looked for.

### METHODIST CHURCH.

On Christmas night the scholars and friends of the Methodist Sabbath school give the cantata entitled "Santa Claus, Junior" in the Armory. This entertainment furnishes a very pleasant way of closing the festival day. Santa Claus Junior learns of the proposed visit of Santa Claus, and in a spirit of mischief delays his coming an hour in order that he might cause some excitement. He succeeds.

The cast of characters follows: Anne, Mrs. W. C. Conner; Mary, Lillian Lewis; Thomas, Clare Conner; Sue, Edna Johnson; Elizabeth, Marion Hooper; Ethel, Hildred Hall; Robert, Victor Kemm; John, Clarence Wilson; North Wind, Mrs. H. Harry Hart; Spirit of Christmas, Lottie Whitsett; Ragged Dick, Santa Claus Junior, Ren Sanford; Santa Claus, Mr. J. H. Harris. Chorus by Sunday school.

Those wishing to place presents on the tree please have them at the hall by three o'clock. The program commences at eight o'clock.

### CHRISTIAN CHURCH.

Christmas exercises will be held at the Christian church Friday evening, when that beautiful little cantata, "Santa's Christmas Bee," will be presented with the following cast of characters: "Santa, Edd. Finnerty; Mrs. Santa, Mrs. Crusan; Topsy, Ida Robinson; Santa's helpers, primary and junior departments.

There will be a Christmas tree for the Sunday school, the distribution of presents following the play.

## THE PENDULUM SWINGING BACK

For a full half century the American people have been moneymad. Every thing has been sacrificed to the one idea of accumulation. The dollar sign became the sole badge of honor and a man's success was measured not by what he made of himself, not by what he accomplished for his fellows or the world at large, but by the size of his pile. This standard of success has warped the imagination of the whole people. The merchant and the professional man bend every energy to the piling up of gold bricks. And the agriculturist, not to be outdone, lies awake nights planning for the removal of the line fence. This has been the condition for years and it requires careful observation to detect any change. But the pendulum is swinging back; the reaction has certainly set in. There is, The Sentinel believes, a growing sentiment in favor of a more moderate success and a life surrounded by greater pleasures.

The growth of our cities has been abnormal—the direct result of abnormal transportation conditions. "To him that hath shall be given, and to him that hath not even that which he hath taken away," has been the working policy of modern commercial transportation companies. The small town has been sacrificed to the city. This was the natural result of competition. In centers where numerous railroads meet low rates are given to both the in-going

and out-going freight but where there is but one road the traffic is taxed all that it will bear. This condition has had a tendency to draw the manufacturing interests into the great transportation centers, the tide has flowed steadily toward the city and the small town has had a hard struggle to retain its own.

In this respect, also the pendulum is swinging back. The conditions surrounding the workman in the cities, the lack of home life and the presence of accumulated vice, have demonstrated to the satisfaction of everyone that we will never reach our highest industrial success until the average workman is placed where he can have fresh air, a family, and a home for that family. The small town, everything else being equal, is the place for industries. A man with a home, and who spends his evenings with his family beautifying that home, is not only a better citizen, but he is worth infinitely more to his employer than his brother laborer who has no other interest than that he finds with his home town companions and in ward politics.

Any man with a home, and with one acre of the earth's surface that he can call his own, and with employment at fair wages, need never fear want for himself or family. Under such conditions his family can be reared and educated and live under the advantages of a wholesome atmosphere.

## SOMETHING HERE FOR EVERYBODY

Oregon ranks a good second to California in prune production, which is now practically confined to the Pacific States. Ever sensitive to environment, the successful growth of the prune will always be confined to favored localities; it cannot be reared far and wide like wheat or berries. The early settlers found that the plum was peculiarly adapted to growth in Western Oregon, and that its yearly yield of luscious fruit was nearly as sure as the coming of the seasons. Gradually the successful culture of the prune and its profitable return brought the fruit prominently before the public, and today we find an acreage of prune orchards in Western Oregon exceeded only by our neighbor, California. No irrigation is necessary, which insures a meaty, sugary fruit, of large size.

Fruit has been grown in Oregon for forty years, but only of late years in a scientific manner. Several hundred acres have been planted to apples and pears in the territory immediately surrounding Cottage Grove the past year, and this acreage will probably be greatly enhanced in 1910. One company alone is planting one thousand acres to fruit trees. Cottage Grove has the garden spot," and is capable of supporting many thousands of people more than at present. For diversified farming, or fruit, stock or poultry-raising, this section is especially adapted. The foothills and newly cleared timber lands furnish splendid grazing for sheep, goats and live stock. These

lands are very fertile, and possess the advantage of drying off earlier than deeper in the valley, making possible greater cultivation, and greater variety of products.

Cottage Grove is pre-eminently the poultry section of Oregon, and there is need of more experienced poultrymen who will raise better fowls, and more of them. For such there is ample room and a very profitable field. The demand of good eggs and poultry has always been beyond the supply, and the present stimulation in the mining industry and increasing immigration must create a greater future market. The Willamette valley is the paradise of the Golden, Chinese, Denny, or ring-necked pheasant. Climatic conditions are favorable to their rapid propagation, as is proved by the thousands of wild ones all over this section.

The rain fall of this valley varies from 35 to 50 inches, falling in from 125 to 156 days. As in all parts of the state, the months from June to October are practically free from rain. Snow rarely falls, and when it does, it seldom remains longer than sixty hours on the ground. A frost that penetrates the ground is very unusual. In all portions of Western Oregon, in which Cottage Grove is located, no matter what the day temperature may be, the night temperature is always below 70 degrees, being cool and comfortable for sleeping. Sweltering hot night are therefore unknown.

## CHRISTMAS GIFTS

That are useful are best of all

Suitable for father, mother, brother, sister or sweetheart, may be found in our stock of

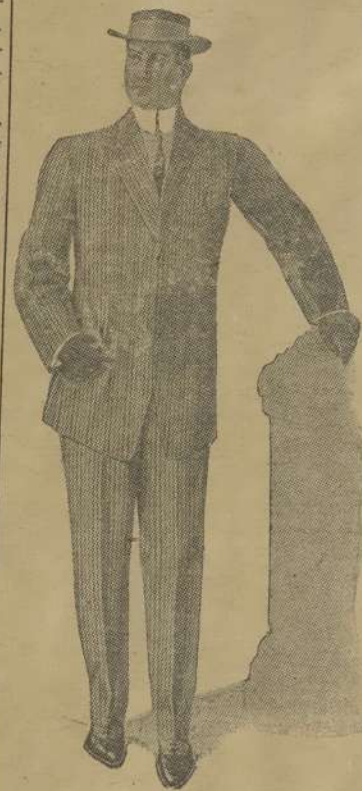
Toilet Articles  
 Leather Goods  
 Post Card Books  
 Framed Pictures  
 Diaries, Etc.

We invite your inspection, assuring you that we can supply your wants at lowest prices.

## The Modern Pharmacy

FOR PURE DRUGS

## The Satisfaction of Ordering Garments from A. E. Anderson & Co.



It enhanced by the Knowledge of Exclusiveness of Material; Perfection of Fit; Assurance of Good workmanship and Style.

Locally represented by

## Hampton & Co



Children delight in wading through all the puddles on the sidewalk and they would rather walk in the snow beside the walk, than anywhere else.

This is hard on the shoes—no shoe will stand it indefinitely. All you can do is to get the strongest shoes you can buy, without getting them too coarse and heavy.

## Security School Shoes

For Boys

For Girls

These shoes are made of the best leather, especially selected. The boys shoes are made by the welt process—the best known method of fastening soles and uppers together. The girls shoes are made in both welt and turn soles.

They are made on good fitting lasts and will not hurt the feet or injure their shape. Both boys and girls shoes are dressy and attractive looking with wonderful wearing qualities.

### Security Watch with Every Pair

Each purchaser of Security School Shoes is entitled to one of these handsome watches for only 50 cents. There isn't a dollar watch on the market as good. It is guaranteed for one year. We couldn't afford to make this offer except as an inducement for you to try Security School Shoes.

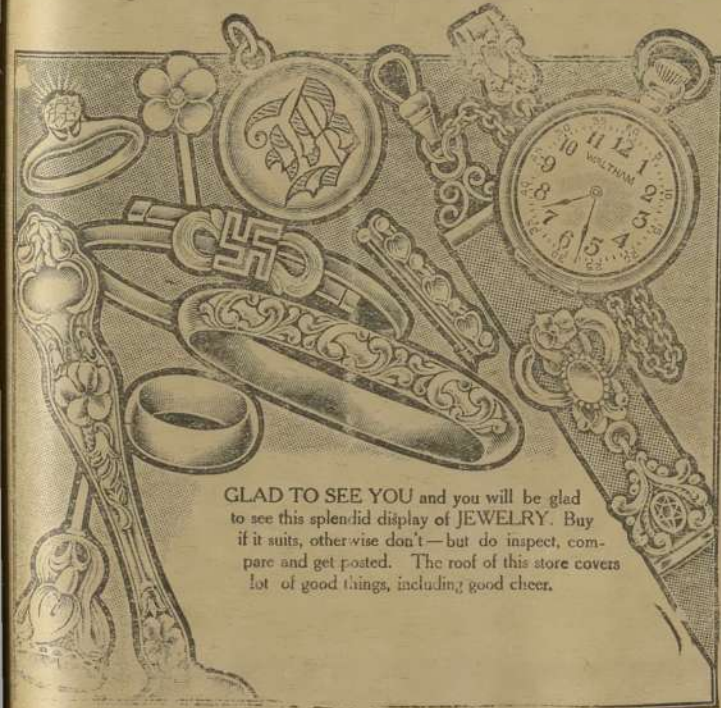
Bring the children in and let us fit them out with a pair of Security Shoes—they will prove a revelation to you in shoe value for childrens shoes

## Rees-Wallace Co.

"WHERE YOU DO BETTER."

SUBSCRIBE FOR THE SENTINEL

## Holiday Goods BUY NOW DON'T DELAY



GLAD TO SEE YOU and you will be glad to see this splendid display of JEWELRY. Buy if it suits, other wise don't—but do inspect, compare and get posted. The roof of this store covers lot of good things, including good cheer.

## MADSEN, the Jeweler

### DEWALK LUMBER

\$8.00 PER 1,000

S. E. WALLACE

### Brick & Cement Work

Suitable for inside walks, No. 1 common and better; dressed on all sides. While it lasts, \$8.00 per thousand feet.

Brown Lumber Co.

Chimneys, Fire Places and Repairing a Speciality

Cottage Grove, - Oregon  
 Phone 673