



**Sharon A. Bernal**  
Real Estate Broker  
859 Bridge Street, Vernonia

503.819.7924  
Sharon@Bernals.com



**John L. Scott**  
REAL ESTATE



21046 Scappoose-  
Vernonia Hwy.  
**\$284,900**  
RMLS#14414639



1940 Ranch home with 1768 sqft on beautiful and private 13.64 acres. Nice big kitchen, living and laundry room. Pasture area, creek & detached open 4-bay garage make this home and property so inviting! [www.21046ScappooseVernoniaHwy.com](http://www.21046ScappooseVernoniaHwy.com)



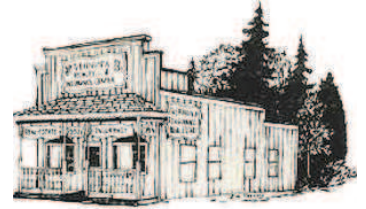
## Check out Out on a Limb in 2015!



Winter hours Mon-Fri 12-4, Sat 11-4

## Vernonia Realty & Insurance Center

953 Bridge Street, Vernonia, OR, 97064  
Office 503.429.6203 Cell 503.780.3466  
[vernoniarlty@agalis.net](mailto:vernoniarlty@agalis.net)



Ken & Helen Bateman, Brokers

### Properties Available Now!



Near Battle Crk Bridge: **Over 12 acres** planted w/15 yr old Doug fir & small creek. Amazing home site on hilltop bench with picturesque views of the Nehalem River Valley & Coast Range. New conditional use permit required, old one has expired.  
**\$124,000**



Hwy 47: **Over 37 acres** near Stub Stewart State Park and Banks-Vernonia linear trail. Scattered with small trees and trails. Several level areas for a private home site. Buildability subject to Washington County approval.  
**\$230,000**



Mellinger Rd : **Rub elbows with nature** on this 7 plus acre parcel, close to city limits on a quiet dead end county road. Nehalem River frontage with a high & dry building site. Enjoy wildlife, fishing & recreating in your own back yard.  
**\$100,000**



64086 Nehalem Hwy N: **Country home & acreage!** This cozy 2 bdrm, 1 1/2 bath has a brand new roof, private backyard w/covered patio, lrg deck & creek. Includes 10+ acres of pasture, barn w/ concrete floor, stalls & power plus river frontage. Approximately 15 acres.  
**\$249,900**



1100 Texas Avenue: **You'll love the convenience.** Next to new school, near Vernonia Lake and linear park, city water & county taxes. Over 8 1/2 wooded acres w/ meandering paths & spotless 3 bdrm, 2 bath dble-wide w/ den, mud rm & outbldg.  
**\$297,000**



Alder Street: **Over 1 1/2 acres** in the city limits w/city water and sewer available. Currently in 3 tax lots that could be developed into more building sites. Plenty of room for a new home, shop, barn and animals.  
**\$99,900**

### In-Home Supports - Direct Support Professionals:

Community Access Services (CAS) has created a new, exciting, and unique service for people with intellectual/developmental disabilities (I/DD) in the Portland metro and surrounding areas.



We are actively looking for talented, self-directed, passionate, and highly creative people to work PART TIME and/or FULL TIME in the Vernonia and Clatskanie area for adults with I/DD living on their own or with their family in the community.

For more information about the opportunities available in working with our amazing non-profit company, please contact our HR Department at (503) 533-4373.



**Henk Schenk, Broker**  
503-708-8749  
[www.schenkrealty.com](http://www.schenkrealty.com)



**OREGON REALTY CO.**  
825 Bridge Street  
Vernonia, OR  
503-429-4300



Information contained herein is deemed reliable, but not guaranteed. Henk Schenk is a licensed realtor in the State of Oregon.

**67330 N Nehalem Hwy..... \$136,900..... ML #14390304**



2050sf 4bd/1.5ba home. Two Shops; 864sf & 576sf, situated on 14.31ac. Farm bldg. 240sf. House lifted in 2010. Koi pond and chicken coop. "AS IS!"  
**PRICED TO SELL!**



**1568 E. Bridge Street ..... \$115,000 ..... ML#14541536**



Affordable bungalow close to Vernonia Lake & Linear Trail! 2bd/1ba, 850sf, tile, gas stove, new carpets, new vinyl, white picket on .17ac, outbldg, high ceiling & 4 blocks to new school!



**925 Rose Avenue ..... \$150,000 ..... ML#14250478**



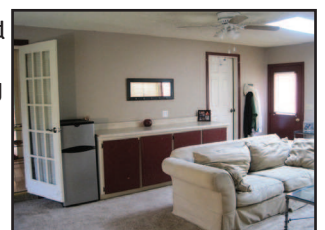
Situated on .23acre 4bd/1ba, 1746sf fenced, grapes, berries, 13x19 woodshed, tile, fir floors, maple, spruce and cedar trees. "AS IS"



**1654 Bridge Street ..... \$174,900 .....ML#14296675**



Remod 3bd/2.5ba situated on .29ac corner parcel. Both family & formal living rooms, upgraded lighting, skylights, circular drive, timeless cedar siding and upgraded SS appliances.



**MIKE PIHL**  
LOGGING CO., INC

Free Estimates  
Specializing in Private Timber

503-429-1470  
cell 503.789.1268  
fax 503.429.0252



[mplogging@frontier.com](mailto:mplogging@frontier.com)  
1984 mist drive, po box 321 vernonia, or 97064