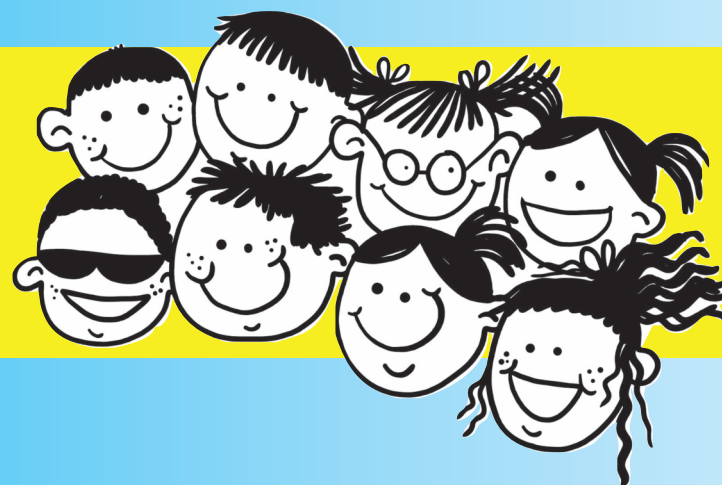


Back-To-School-Checkup

Send your child off to school
with a healthy mouth.



Special gift for you just
because you are a
Union member!

Bring this coupon to the
location nearest you for a

**FREE Teeth Whitening
Package**



*You do not need to be our patient &
there's absolutely no obligation*

*One kit per family; you must present the original coupon,
no NWLP copies will be accepted.

EXPIRES: April 18, 2018-NWLP



**Union and Independently-owned locations
throughout Washington and Oregon**

Beaverton - 503.914.4003

Chehalis - 360.639.3377

Eugene/Springfield - 541.622.0602

New Location!
East Vancouver/Camas - 360.226.2332

Gresham - 503.914.4005

Hillsboro - 503.719.6452

Longview - 360.639.3388

Milwaukie - 503.821.0089

Salem - 503.914.4007

Salmon Creek - 360.639.3399

Coming soon!

Southern Oregon - 541.227.6966

Western Washington

Arlington - 360.282.0803
 Auburn - 253.220.4104
 Bellevue - 425.201.0600
 Bellingham - 360.282.0804
 Bonney Lake - 253.220.4105
 Bothell - 425.201.1703
 Carnation - 425.201.1934
 Everett - 425.201.4343
 Federal Way - 253.220.4106
 Issaquah - 425.201.4411
 Kent - 253.220.4107
 Lakewood - 253.220.4108
 Lynnwood - 425.201.4422

Maple Valley - 425.201.4433
 Marysville - 360.488.4400
 Monroe - 360.639.3300
 Mount Vernon - 360.639.3311
 North Bend - 425.669.9015
 Olympia - 360.639.3322
 Poulsbo - 360.639.3344
 Puyallup - 253.220.4109
 Redmond - 425.249.3415
 Renton - 425.249.3416
 SeaTac - 206.432.4706
 Seattle - 206.432.4707
 Sequim - 360.639.3355
 Shoreline - 206.432.4708

Silverdale - 360.639.3366
 Snohomish - 425.577.6755
 Tacoma - 253.220.4110
 Tukwila - 425.577.6775

Eastern Washington

Ellensburg - 509.361.5500
 Kennewick - 509.361.5511
 Moses Lake - 509.361.5522
 Pasco - 509.361.5533
 Spokane - 509.361.5544
 Spokane (North) - 509.361.5566
 Spokane Valley - 509.361.5577
 Wenatchee - 509.361.5588
 Yakima - 509.361.5599