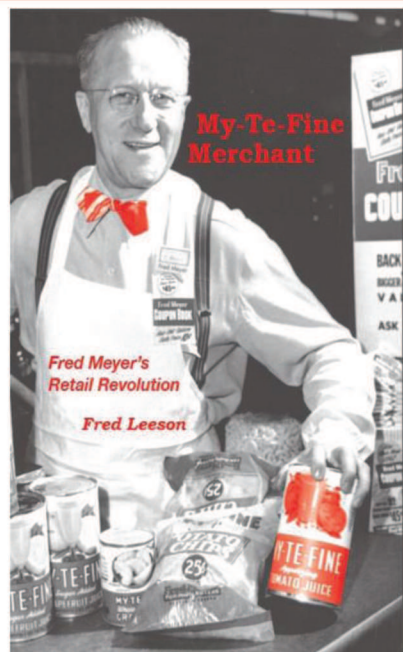


STAT OF THE MONTH

Between 2007 and 2012, the Sunlight Foundation reports, CEOs at 200 top U.S. corporations had their firms spend \$5.8 billion on federal lobbying and campaign contributions.

Over those years, the 200 firms took in \$4.4 trillion in federal support, the equivalent of \$760 in benefits for every \$1 spent.

From the Institute for Policy Studies



Read the full story of this “brilliant but difficult man”

Union price: \$15

\$22.95 at Amazon.com

Send \$15 cash, check, Visa or MC and your address to:

Irvington Press, 2226 NE Hancock St., Portland OR 97212



A new online video by IBEW International looks at the history of race in IBEW Local 48.

RICKY BRAMES SR.
LOCAL 48 RETIREE

IBEW 48: Diversity on the rise

A new online video by the International Brotherhood of Electrical Workers (IBEW) calls attention to diversity in Portland-headquartered Local 48. Local 48 was an all-white all-male union until 1941, but today, about one in five are women and minority members.

The online video, produced by Denver-based Oswego

Creative Inc., is part of IBEW Hour Power, a weekly series sponsored by the IBEW to highlight union pride, professionalism and success.

IBEW Hour Power's Feb. 4 episode, "IBEW Local 48: Committed to Diversity," features archival images and brief interviews by host Matthew Walton of African-American members of Local 48, includ-

ing former business manager Keith Edwards, retirees Ricky Brames and Terry Tims, and current apprentice Domonique Lartigue. Also appearing are current business manager Gary Young, female apprentice Theresa Riehl, and Asian-American apprentice Kevin Eng.

Watch it online at youtu.be/NxEbYtbCrME



Trust and experience make a strong union

Administering labor management funds is a complex process. At Union Bank®, we've made it more efficient for Taft-Hartley clients for over 60 years.

We offer specialized collection and disbursement services that are tailored to serve the needs of benefit administrators—from a customized lockbox that improves the employer remittance process to state-of-the-art electronic receivables. Our experienced deposit specialists will help you identify your specific commercial banking needs and design a plan to streamline your banking experience, increase efficiency, and reduce costs. Union Bank is proud to provide commercial banking services to nearly 250 labor management clients of every size, representing over \$525 million in deposits.

Please contact us today for more information.

unionbank.com/labor   

Labor Industry Division Manager
Kimberly Siebler, Managing Director
480-207-5921

Southern California, Southwest, Midwest
Armand Antonian, Sr. Relationship Manager
213-236-5046

Northern California, Pacific Northwest, East Coast
John Mendoza, Sr. Relationship Manager
415-705-7112



A member of MUFG, a global financial group