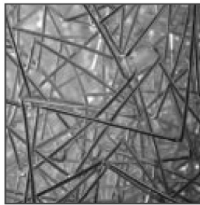
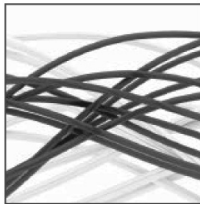


Behind every dream there is a plan.

If you have the dream of securing the financial futures of hard working union employees – then you have come to the right place.

Serving Taft-Hartley plans with select investment and retirement plan solutions for over 40 years.



McMORGAN
& COMPANY
INVESTMENT MANAGEMENT

WWW.MCMORGAN.COM

Mark Johnson | Partner
mjohnson@mcmorgan.com | (503) 523-7777

Patrick Worley | Partner
pworley@mcmorgan.com | (206) 498-7729

...Strike ends at UO

(From Page 1)

pay \$50 a year per grad student to fill the fund, which would amount to about \$150,000 a year. Rules for the fund will be drawn up by a seven-member committee, with two members each appointed by GTFF and the UO administration, one member by the faculty senate, and two non-working graduate students elected by the graduate student body. When the dean denies an applicant's claim, the committee will also hear appeals and make non-binding recommendations to the university president, who will make the final decision.

"It's good that we have increased oversight, but we would have been happier with a guarantee," said GTFF Vice President Richard Wagner, a graduate teaching fellow in the Physics department.

"People are every excited to get back to work," Wagner said. "A lot of members were very torn having to walk away from their students in order to stand up for their colleagues."

The strike threw plans for final exams into chaos. Grad students teach about a third of classes at UO, and in classes taught by professors, they lead discussion groups, run labs, and proctor exams. The UO administration tried to get academics and others to do the work of strikers, with mixed results.



Supporters of striking University of Oregon grad students picket Dec. 9 outside UO's Portland branch campus.

Exams went forward in some classes and were cancelled in others, with students getting grades based on previous work. In still other cases, exams were made optional.

"It was a very messy fight, and it's going to be a tough road to get trust back," Wagner said.

Our members have the power to make the season bright.

Enjoy Your Holiday Season

from
IBEW Local 125



17200 NE Sacramento, Portland, OR
503-262-9125



Small enough to know you. BIG ENOUGH TO SERVE YOU.



Full service third party administrator. Serving Taft-Hartley Trusts since 1954.

1220 SW Morrison Street, Suite 300
Portland, OR 97205

Phone 503.224.0048

Fax 503.228.0149

www.aibpa.com

