

Busted!

Dosha Salon Spa fires another union supporter

Dosha Salon Spa, a local chain of Aveda-branded spas, is amassing quite a rap sheet with the National Labor Relations Board. **Communications Workers of America Local 7901** — the union that Dosha workers voted in March 2011 to join — filed two more charges against the company in February, bringing to 10 the total charges filed. The latest: Dosha suspended for a month — and on Feb. 20 terminated — massage therapist Philip Aust; and denied hostess Sarah Pearson her right to have a union steward as a witness when called into a manager's office. Aust's termination follows that of pro-union massage therapist Mary Christ, who was fired in September after wearing the union's trademark red feather earrings in a workplace show of solidarity. An NLRB investigation determined that Christ was fired for her union sympathies, and a federal administrative law judge is scheduled March 20 to hear that and other charges.

If you don't like it, move to Australia!

We've heard plenty about managers' "open door" policies, but this is going too far. Greg Godfrey is the plant manager at the nonunion Dyno Nobel chemical factory in Deer Island, Oregon (north of St. Helens). On Feb. 9, according to charges filed by **Association of Western Pulp and Paper Workers (AWPPW)**, Godfrey drove to a hotel where the union was meeting with employees, walked up to the meeting room, and looked in to see who was attending. After the union organizer confronted him, he left, but he later returned and parked his vehicle a short distance from the hotel driveway — to spy on employees and discourage attendance, the union alleges. Moreover, AWPPW says, he went on to interrogate employees, verbally abuse union supporters, and indicate that those who supported the union were disloyal, even telling them if they didn't like the way they were being treated, they could leave and move to Australia. [Since 2008, Dyno Nobel has been owned by Incitec Pivot Limited, an Australia-headquartered maker of fertilizers and industrial explosives.] Despite the intimidation, AWPPW has requested a union election to determine if the 24 workers at the plant want to join.

Hire Oregon Vets



503-655-8840 (Portland Metro)
1-877-VET-HIRE (Toll Free)

The Hire Oregon Veterans (HOV) Program is a partnership between Community Solutions for Clackamas County, Labor's Community Service Agency, Inc. and the WorkSource Oregon Employment Department. Services are offered in Clackamas, Marion, Multnomah, Polk, Washington and Yamhill counties.



The team at SWANSON, THOMAS, COON & NEWTON

can help you:

Get Workers' Compensation benefits for on-the-job injuries or illness.

Get Social Security benefits if you can't work.

Recover damages if you are injured by someone's negligence.

Helping injured people for over 25 years.

Workers Compensation

VA Disability

Construction Injuries

Death Claims

Personal Injury/Product Liability

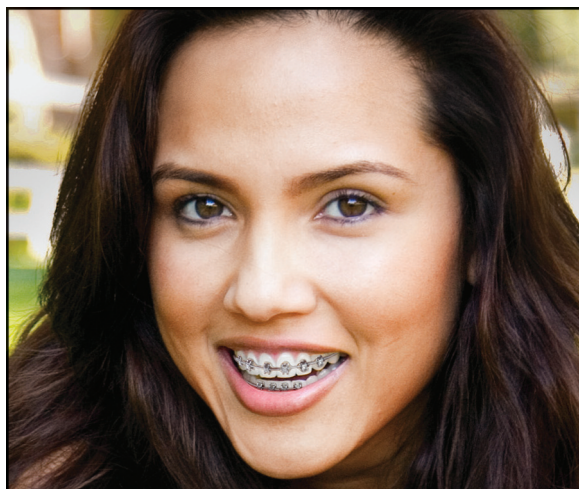
Social Security Disability

Occupational Disease/Mesothelioma

Call us today at **503-228-5222**

Straight answers. No cost for consultation.

SWANSON, THOMAS, COON & NEWTON
ATTORNEYS AT LAW
820 S.W. Second Avenue, Suite 200,
Portland, Oregon 97204
www.stc-law.com



TEETH LOVE GETTING MORE.

MORE CARE

- General services plus dentures, orthodontics, implants, oral surgery, and digital X-rays¹

MORE VALUE

- All major insurance plans accepted
- Union members save 40% or more on all your dental needs

MORE CONVENIENCE

- With 10 offices, we're easy to find
- Same day emergency care

Expect more. Get more.

SPECIAL OFFERS

\$100 OFF

DENTAL SERVICES²

NO-CHARGE CONSULTATION

\$500 OFF
BRACES³

10 Convenient locations to serve you.

BEAVERTON

4655 SW Griffith Dr.

GRANTS PASS

1021 NE 6th St.

GRESHAM

443 NW Burnside Rd.

HILLSBORO

7206 N.E. Cornell Rd.

MILWAUKIE

17186 SE McLoughlin Blvd.

PORTLAND

3580 SE 82nd Ave.

SALEM

831 Lancaster Mall Dr. N.E.

WILSONVILLE

25700 SW Argyle Ave.
Northwest Dental Associates, P.C.

VANCOUVER, WA

Fisher's Landing
3250 S.E. 164th Ave.
Austin Phoenix, D.D.S., M.S.
Peter Vu, D.M.D.

Salmon Creek

2101 N.E. 129th St.
Austin Phoenix, D.D.S., M.S.
Jeff Pearson, D.M.D.
Mailiki Patterson, D.D.S.
Stirewalt, P.C.

1. 877.34 BRIGHT NOW
1.877.342.7444
www.brightnow.com

Stay Connected



Bright Now! Dental

¹Services vary by office. ²Offer valid for every family member in same residence, but only valid once per person (\$500 per person minimum required for \$100 discount). Cannot be combined with other discounts. Offer is for patients not using insurance. Not redeemable for cash or credit. ³Reg. Price \$5,418. Valid on new full orthodontic cases only does not include records and retainers. Valid for patients not using insurance. Offers are subject to change and expire on 12/31/12. © 2012 Smile Brands Inc. All rights reserved.