

**May 18, 2010
Oregon Primary Election
Recommendations From The
NW Oregon Labor Council**

U.S. REPRESENTATIVE
DAVID WU, 1st District

GOVERNOR
JOHN KITZHABER

SUPERINTENDENT OF PUBLIC INSTRUCTION
SUSAN CASTILLO

CITY OF PORTLAND
Commissioner Position #2
NICK FISH

Commissioner Position #3
DAN SALTZMAN

MULTNOMAH COUNTY
Board Chair
JEFF COGEN

Commissioner Dist. 2
TOM MARKGRAF

Sheriff
DAN STATON

METRO COUNCIL
President
REX BURKHOLDER
Councilor, District 1
DUKE SHEPARD
Councilor, District 3
KATHRYN HARRINGTON

Clackamas County
Commissioner, Position #5
JIM BERNARD
Commissioner, Position #3
ANN LININGER

WASHINGTON COUNTY
County Commission Chair
DICK SCHOUTEN

Oregon Legislature
(contested races only)
Senate District 24
ROD MONROE
House District 44
TINA KOTEK

Authorized and paid for by the Northwest Oregon Labor Council
1125 SE Madison St., Portland, OR 97214

Building trades' Mohlis has to recuse himself from vote on PDC office lease

John Mohlis, a commissioner on the Portland Development Commission, has had to recuse himself from voting or even discussing whether or not PDC should move from its headquarters in Old Town Portland.

"I've never had to do this before," said Mohlis, who is executive secretary-treasurer of the Columbia Pacific Building and Construction Trades Council. "But I understand how it could be looked at as a conflict of interest. When PDC's attorney came to me and explained the situation, I re-

ally couldn't argue the point."

The issue revolves around PDC's office space. Its lease in Old Town is set to expire Aug. 30, 2011. PDC has been downsizing its staff of 155 (most are members of AFSCME) and no longer needs as much space. Several developers and commercial property owners have solicited the Commission to relocate to one of their properties.

One of those pitching PDC is TMT Development Co., owner of the unfinished Park Avenue West Tower in the heart of downtown Portland.

Owner Tom Moyer had to stop construction on the 33-story tower in April 2009 after the Great Recession dried up construction loans. The stoppage pushed a lot of union construction workers onto the unemployment line.

TMT now needs PDC to commit to a long-term lease for three floors in order to qualify for a loan that would restart the project. [All that's there now is a large hole in the ground.] With unemployment in the construction industry as high as 40 percent in some crafts, restarting construction would put lots of people back to work.

A conflict of interest emerges for Mohlis because as head of the building trades council, union locals pay per capita taxes based on membership. An increase in membership would mean an increase in per capita to his council.

Mohlis knows what he would like PDC to do, but he can't talk about it.

The commission said April 28 that it will make a final decision on whether or not to stay in Old Town at its meeting May 12.

Portland-based Carpenters Local 247 placed under supervision

Portland-headquartered Carpenters Local 247 has been taken over temporarily by its parent organization, United Brotherhood of Carpenters and Joiners of America (UBC). UBC General President Douglas McCarron has appointed Western District Vice President Michael Draper to supervise the local, assisted by Western District representative Jim Gleason.

Explaining the decision, McCarron cited financial irregularities and charged local union officers with failing to fulfill their duties, detailing the charges in an April 12 letter to members that is posted on the Local 247 web site, www.ubc247.com.

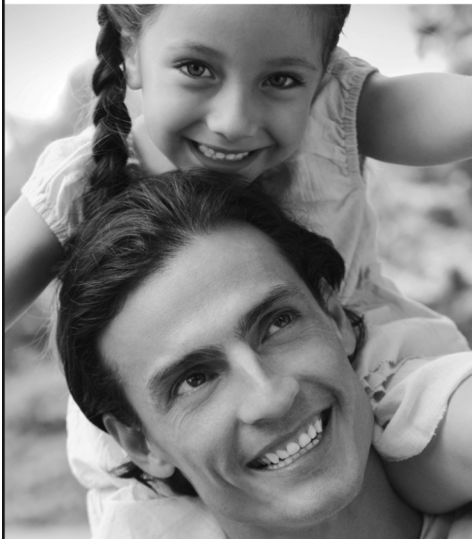
UBC got involved after receiving complaints from one or more Local 247 members. Gleason was assigned to conduct an initial investigation, and issued a report March 19. A March 29 report by a certified public accountant also found significant deficiencies in financial procedures, McCarron said in the letter.

All of Local 247's elected leaders have been suspended from office, pending a hearing to be conducted by the UBC, which will be open to members and officers.

Local 247 had 1,239 members as of its latest filing with the U.S. Department of Labor.

Elizabeth M. Bedsole, LMT
Lic. #16064
...massage for every body...
(503) 960-3631
10% discount for all union members

Union members! It's time to get a jump on a healthy smile



Bright Now! Dental has provided Union members and their families quality, full service care at affordable prices for more than 30 years. Come in and create a healthy, beautiful smile to last a lifetime.

- Preventive, corrective and cosmetic dentistry services
- Convenient hours and same-day appointments
- Payment options that work for you
- -\$500 credit guaranteed
- Low monthly payments*

FAMILY SAVINGS DISCOUNT

\$100^{OFF} DENTAL SERVICES

Offer valid for every family member in same residence, but only valid once per person (maximum \$100). Cannot be combined with other discounts or offers on same visit and cannot be used towards existing balances. Not redeemable for cash or credit. Offer is coordinated with insurance. Offer is valid for new patients only and is subject to change and expires 12/31/10.

10 convenient FULL-SERVICE locations to serve you.

BEAVERTON, OR
4655 S.W. Griffith Dr.
503-644-1400
Walter List, D.D.S.
Scott Henson, D.M.D.
Vivian Lam, D.M.D.

GRANTS PASS, OR
1021 N.E. 6th St.
541-479-6696
Brandon White, D.D.S.

GRESHAM, OR
443 N.W. Burnside Rd.
503-492-8487
Austin Phoenix, D.D.S., M.S.
Ildiko Istvan, D.D.S.
Phong Bui, D.M.D.

HILLSBORO, OR
ORENCO STATION
7206 N.E. Cornell Rd.
503-640-9999
Matthew Biermann, D.M.D.
Rachel Cole, D.D.S.
Banu Ramkrishna, D.M.D.

MILWAUKIE, OR
17186 S.E. McLoughlin Blvd.
503-659-2525
Brooke McNeil, D.M.D.
Dmitriy Lyubchenko, D.M.D.

PORTLAND, OR
3580 S.E. 82nd Ave.
503-777-0761
Matthew Biermann, D.M.D.
Deanna Lee, D.M.D.
Nick Gravitck, D.M.D.

SALEM, OR
831 Lancaster Mall Dr. N.E.
Suite 2
503-362-8359
Grant Smith, D.D.S.
Scott Henson, D.M.D.
Michelle Kirkpatrick, D.M.D.
Chris Martel, D.M.D.
Chung Joe-Park, D.M.D.

WILSONVILLE, OR
25700 S.W. Argyle Ave.
Suite F
503-682-8552
Charissa Foster, D.M.D.
Austin Phoenix, D.D.S., M.S.
Nick Gravitck, D.M.D.
Northwest Dental Associates, P.C.

VANCOUVER, WA
FISHER'S LANDING
3250 S.E. 164th Ave.
360-891-1999
Austin Phoenix, D.D.S., M.S.
Holly Wallstrom, D.D.S.
Peter Vu, D.M.D.
Stirewalt, P.C.

VANCOUVER, WA
SALMON CREEK
2101 N.E. 129th St.
Suite 101
360-574-4574
Phong Bui, D.M.D.
Austin Phoenix, D.D.S., M.S.
Jeff Pearson, D.M.D.
Stirewalt, P.C.

*Financing available on approved credit. © 2010 Smile Brands Inc. All rights reserved.

1-888-BRIGHT NOW
www.brightnow.com

Bright Now! Dental
Smiles for Everyone.™