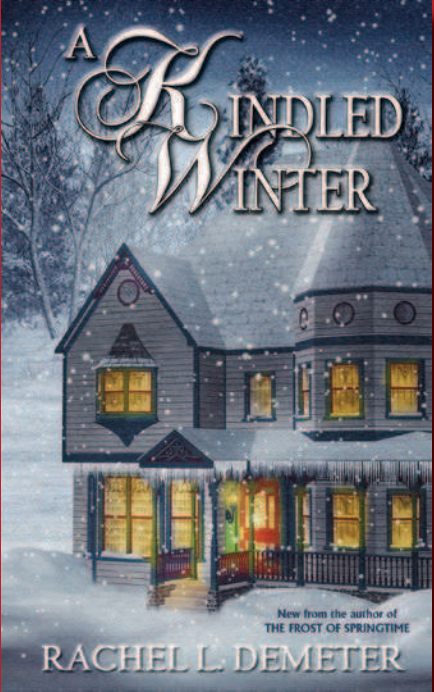


# Local



**A Kindled Winter**  
RACHEL L. DEMETER

Christmas, my child, is love in action. Every time we love, every time we give, it's Christmas."  
— Dale Evans

**A HOLIDAY ROMANCE YOU WON'T WANT TO MISS! COMING NOVEMBER 1, 2015.**

**VAL'S VEGGIES'**  
**Corn Maze and Pumpkin Patch**

**Grand opening Sunday, October 4th!**

**Come out and see if you can find your way through the corn maze and solve the scavenger hunt on the way. Then head over to the pumpkin patch and pick the perfect pumpkin for carving. Pumpkins are priced by the pound.**

**Admission:** \$8/person, ages 12 and under are \$5/person  
Kiddie Maze available for ages 6 and under for \$3/person  
Group rates available for 15 or more upon request.

Sunday 10 a.m. to 6 p.m.  
Monday-Thursday 10 a.m. to 4 p.m. by appointment only  
Friday 10 a.m. to 4 p.m.  
Saturday 7 p.m. to 9 p.m. only

Oct. 2 Maze is open from 10 a.m. to 4 p.m.  
Oct. 3 Open from 7 p.m. to 9 p.m. only.  
Oct. 4 Grand opening 10 a.m. to 4 p.m.  
Face painting, games, food and lots of pumpkins to choose from.  
Oct. 10 Midnight in the maze. Maze is open from 7 p.m. to 12 p.m. Sit around the campfire.  
Oct. 17 Night maze. Open from 7 p.m. to 9 p.m. Sit around and enjoy the campfire afterwards.  
Oct. 24 Full moon in the maze. Maze is open from 7 p.m. to 12 p.m. Sit around the campfire and enjoy the full moon after getting lost in the maze!  
Oct. 25 Family Day. Adults \$7 Children 12 and under \$4. Face painting, food and games  
Oct. 31 Halloween at the maze. Games and treats. Open 7 p.m. to 12 p.m.

**Directions:** Take Hwy. 203 to Medical Springs. At mile marker 26, turn on Blue Mt. Ridge Road, go a half-mile and turn right on Houghton Creek Rd. Go 2 miles.  
Maze is on left.  
Call 541-853-2358  
or go to [www.valsveggies.com](http://www.valsveggies.com) for more information.



## MEET OUR TEAM!

*Kerry McQuisten*



Editor / Publisher.

News Tips and Press Releases:  
[news@thebakercountypress.com](mailto:news@thebakercountypress.com)  
Letters to the Editor: [editor@thebakercountypress.com](mailto:editor@thebakercountypress.com)

*Todd Arriola*



Reporter.

County Commissioners / Planning, Agriculture, The Outdoor Column  
[todd@thebakercountypress.com](mailto:todd@thebakercountypress.com)

*Brian Addison*



Reporter.

School Board, Mining, Forestry, Federal Issues, Investigative.  
[brian@thebakercountypress.com](mailto:brian@thebakercountypress.com)

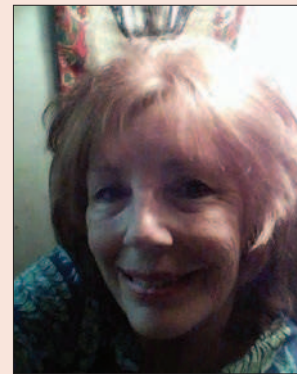
*Gina K. Swartz*



Reporter.

City Council, Events, Business, Human Interest.  
[gina@thebakercountypress.com](mailto:gina@thebakercountypress.com)

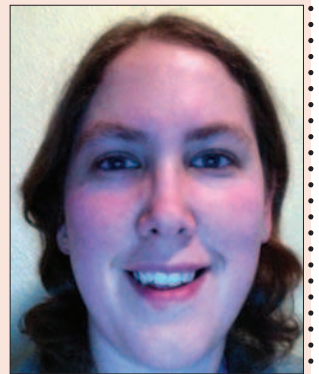
*Sunny Werner*



Reporter.

Events, Human Interest, City/Planning On Call.  
[sunny@thebakercountypress.com](mailto:sunny@thebakercountypress.com)

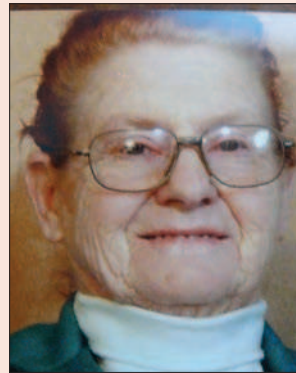
*Meghan Andersch*



Reporter.

Sumpter, McEwen, Granite, On Call.  
[meghan@thebakercountypress.com](mailto:meghan@thebakercountypress.com)

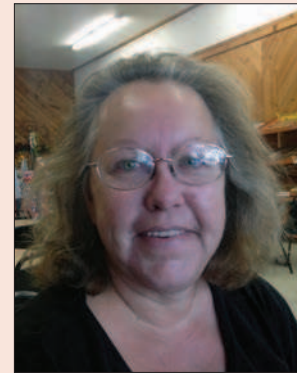
*Carmelita Holland*



Reporter.

Richland, Keating, New Bridge, Halfway.  
[news@thebakercountypress.com](mailto:news@thebakercountypress.com)

*Eileen Driver*



Reporter.

Huntington. Homemade Goodness Column.  
[eileen@thebakercountypress.com](mailto:eileen@thebakercountypress.com)

*Chuck Buchanan*



Reporter.

Durkee, Lime, On Call.  
[news@thebakercountypress.com](mailto:news@thebakercountypress.com)

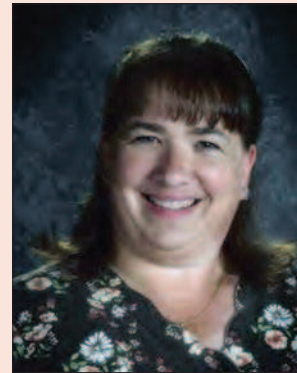
*Kailyn McQuisten*



Delivery Assistant / Photographer

BMS, BHS, On Call.  
[news@thebakercountypress.com](mailto:news@thebakercountypress.com)

*Wendee Morrissey*



Advertising Sales.

Sumpter, Bates, Medical Springs, Keating, Richland, Halfway.  
[wendee@thebakercountypress.com](mailto:wendee@thebakercountypress.com) or call 541.805.1688

*Dave Conn*



Advertising Sales.

Baker City, Haines, All Other Areas.  
[david@thebakercountypress.com](mailto:david@thebakercountypress.com) or call 541.523.5524



**THE RUSH LIMBAUGH PROGRAM**

WEEKDAYS AT 9AM  
SUNDAY AT 3PM

