

If it's not in *Just Out*,

OUT & ABOUT

it's not happening.

OUT Dancing Intermediate/Advanced Night-club 2-Step Lessons. (6:30 p.m., Ankeny Street Studio, 975 SE Sandy, \$10, outdancing.info)

Pivot Film Fridays! (7:00 p.m., Pivot, 209 SW 4th, Free, pivotpdx.org)

MTF Support Group. For more information please contact sujvary@comcast.net. (7-9:00 p.m., Q Center, 4115 N Mississippi)

The Feminist Film Society. This month's film: *The Best Little Whorehouse in Texas.* (7:00 p.m., In Other Words, 14 NE Killingsworth, motherwords.org)

GO The Portland Sisters of Perpetual Indulgence present **We CAN for the Arts: A Benefit for the Creative Advocacy Network.** (8:00 p.m., Crush, 1400 SE Morrison, 21+, \$5 cover)

Chuck Pyle performs live in Eugene. (8:00 p.m., Tsunami Books, 2585 Willamette St., Eugene, \$17, chuckpyle.com)

Sugar Town! October's Sugar Town is an Outfit Party! Assemble an ensemble of orange & black and dance your SOUL out. (9:00 p.m., Saratoga, 6910 N Interstate, 21+, \$3-5 sliding scale)

GO **Gear Up, Suit Up, Saddle Up:** The Eagle Portland welcomes the Northwest Gay Rodeo Association. (9:00 p.m., The Eagle Portland, 835 N Lombard, 21+, No cover!, facebook.com/theeagleportland)

The Oregon Bears present **Sordid Lives**, a beary Halloween party with DJ Brad. (9:00 p.m., Local Lounge, 3536 NE MLK, 21+, No cover!)

MANTRAP, with DJ Lunchlady. (9:00 p.m., Red Cap Garage, 1035 SW Stark, 21+)

PEEP SHOW presents **Hard Times Halloween** with Little Tommy Bang Bang, with performances by Fannie Mae Darling, SWAGGER, Sleazy B, Slim Pickins and Laura Beth, Sterling Clark, Georgia Ray Babycakes, and more! (10:00 p.m., Red Cap Garage, 1035 SW Stark, 21+)

Drinking with the Divas! Join the Divas at Mary's for a night of drinking and debauchery! (10:00 p.m., Hamburger Mary's, 19 NW 5th, 21+, No cover!)

GO **Queer Documentary Night!** Featuring screenings of *Running in Heels* and *Hella Strong.* (11:00 p.m., Cinema 21, 616 NW 21st, 21+, \$3-5 cover)

SAT OCT 22

The Adventure Group joins the Portland Front-runners on an Esplanade walk with optional brunch. Meet by Vera Katz' statue (9:00 a.m., 1 SE Main, adventuregroup.org)

The Adventure Group does the "4-T" urban hike (Trail, aerial Tram, Trolley and Train). Meet at the Zoo's topside MAX train station. (9:30 a.m., SW Knights Blvd at MAX, RSVP to Evan at 503-701-7922)

Men's Eco-Hike: Salmon River. (10:00 a.m., \$8-20 sliding scale, For more information, or to RSVP, call 503-223-8822 x1 or visit manifestpdx.org)

GO **First Annual Zomb & Monster Pub Crawl.** (3:00 p.m., Dante's, 350 W Burnside, 21+, For a full schedule, visit zomb-crawl.com)

Amazon Dragons Paddling Club Poker Fund-raiser! Buy in for \$40 and be a part of the \$500 cash prize pool, while supporting Portland's lesbian paddling club. (4:00 p.m., \$40 buy-in, The Dean of Poker's House, 7814 NW 10th Court, Vancouver, RSVP to jdillen@comcast.net)

Free Rapid HIV Testing for guys into guys. (5-8:30 p.m., Pivot, 209 SW 4th, pivotpdx.org)

GO **The First Annual Blue Ball**, a benefit for the Coastal AIDS Network. (7:00 p.m., Eden Hall, Gleneden Beach, \$20, coastalaidnetwork@gmail.com)

Disko Warp presents **Speed Up! Episode 2** with Hi-NRG J-Pop Happy Hardcore DJs Jimmi

Cricket, Lucky Princess, and Initial P. (8:00 p.m., Pop Culture, 1929 Main Street, Vancouver, All ages, \$5, facebook.com/diskowarpmusic)

April Verch performs live in Eugene! (8:00 p.m., The Laboratory, 2645 Willamette St., Eugene, \$17, aprilverch.com)

BLOW PONY It's a dance party for queers, regardless of whatever may be in your pants. (9:00 p.m., Branx, 320 SE 2nd Ave., \$5, blowpony.com)

Hamburger Mary's presents **TWISTED:** all the games your mom wouldn't let you play! (9:00 p.m., Hamburger Mary's, 19 NW 5th, 21+, No cover!)

L.U.R.E. (9:00 p.m., The Eagle Portland, 835 N Lombard, 21+, No cover!, facebook.com/theeagleportland)

GO Fleur de Lethal presents the **Fourth Annual Moulin Rouge Spectacular Spectacle!** Come early (and in costume) for live drag, burlesque, and music! (9:00 p.m., Bagdad Theater, XXX, 21+, \$5 general admission, \$25 for two VIP admissions, facebook.com/fleurdelethal)

Svetlana's Birthday Party (and Zombie Crawl). (10:00 p.m., Red Cap Garage, 1025 SW Stark, 21+, No cover!)

XXXotica. (10:00 p.m., Hamburger Mary's, 19 NW 5th, 21+, No cover!)

SUN OCT 23

Bottomless Mimosa Brunch! Get ready for that hang-over medicine, Mary! (10:00 a.m.-3:00 p.m., Hamburger Mary's, 19 NW 5th)

Queer/Feminist Theory Reading Group. (4-6:00 p.m., Q Center, 4115 N Mississippi)

Repent! **The Church of the Poison Mind** welcomes all sinners. (4-9:00 p.m., Silverado, 308 SW 3rd, 21+, Free)

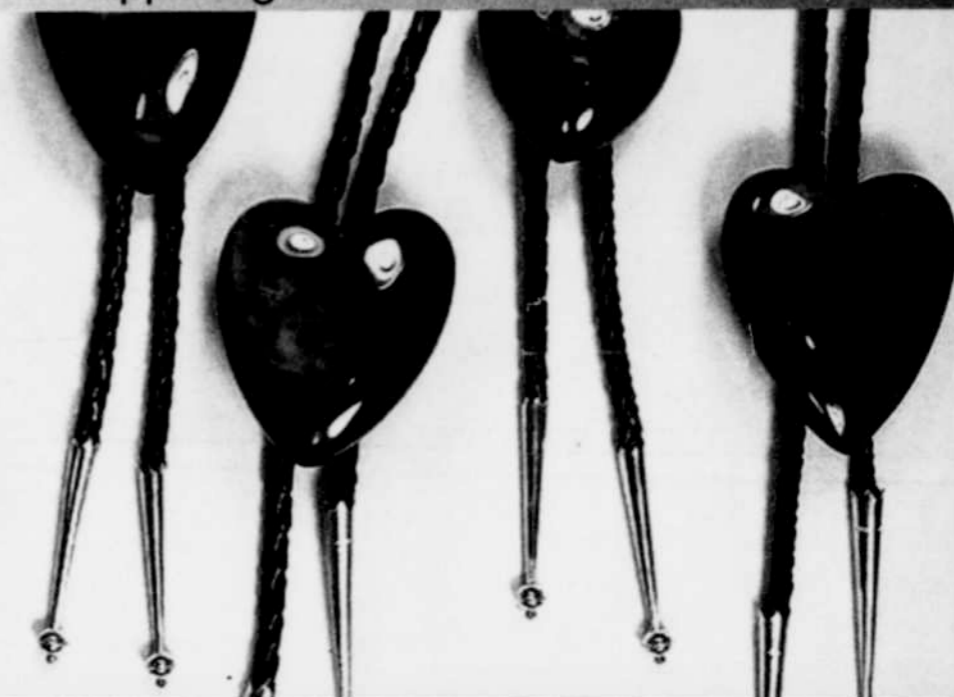
Men's Faith & Sexuality Group. This safe, welcoming forum is for men who've experienced a challenging conflict between their faith and sexuality. (4-5:30 p.m., For more information or to RSVP, call 503-223-8822 x1 or visit manifestpdx.org)

Femmes Unite! social group. Please bring food you can eat and a bit more to share. (6-8:00 p.m., Q Center, 4115 N Mississippi)

The Mindfulness for Living Group explores mindfulness through meditation, discussion and exercises. (6-7:00 p.m., Q Center, 4115 N Mississippi)

Superstar Divas Mega Show! (8:00 p.m., CC Slaughters, 219 NW Davis, 21+, No cover!)

Gay Aalto Sundays. (10:00 p.m., Aalto Lounge, 3356 SE Belmont, 21+, No cover!)



David Horste's bowlerite (recycled bowling ball) BOWL-oh! Ties

Art in Context

Portland Open Studios offers self-directed tours of 100 artists' spaces

Ever wonder just how an artist arts, er, creates? **Portland Open Studios** is your chance to get up close and personal with 100 of the metro area's most talented folks in an annual exploration—and intersection—of art and commerce.

Map in hand, via hard copy or handy iPhone app, attendees visit artists at their leisure, within the context of the creative space. But POS isn't just a self-directed experience, it's an interactive one. Tour-goers can don up-cycled wearable fashion, watch molten glass or fine porcelain get morphed into a vessel, visualize a landscape moments before it's realized in paint and peer through layers of silk-screened band posters.

Of particular note for the 2011 lineup, selected by an independent jury panel including Mark Woolley, are LGBTQ artists Angela Gay, Richard Brandt, Dan Pillers, Therese Murdza and David Horste.

A Radical Faerie and self-professed "rogue lapidary," Horste began cutting stones when he was 10 and has worked full-time in the field for almost 20 years, using nontraditional and recycled materials to create jeweled sculptures of sorts.

And from Gay's abstract oil textures to Brandt's post-industrial clay "artifacts from the future," the found objects, text and childhood myths of Pillers' shadow boxes to the vibrant mixed-media of Murdza's canvases, POS has something for every inquisitive eye.

Supporting the arts has rarely felt so intimate.

Oct. 8-9 and 15-16, 10 a.m.-5 p.m.; locations vary; \$15 for full-color tour guide or iPhone app, \$5 for map-only ticket includes two adults, free for children under 18; portlandopenstudios.com.

—AMANDA SCHURR



Palace of Crystal, a dance performance created by bebbey runs Oct. 7-9 and Oct. 14-16 at The Mouth Studio. For more information, visit bebbey.com

Check out up-to-date information on the queerest events in town by logging on to **justout.com.**

EDDIE'S DELIVERY
503-289-4700

FLAT IRON PIZZA

PIZZA • SALAD • SANDWICHES • WINGS

This place is awesome. All the ingredients are fresh, bread is made from scratch, the staff serves quickly and accurately, a nice setting, great pizza, and more... It's a great spot.

— review by Adam W.

Everyday, 3pm - 10pm
1233 N Killingsworth, Portland 97217
www.EddiesFlatIronPizza.com
503-289-4700

Grendel's Coffee House

Serving organic coffee and local pastries

8th & East Burnside 503-595-9550

M i N G O

Patio Dining, Private Dining, Fun Dining, Fine Dining

M i N G O
in Beaverton
503 646 6464 WWW.MINGOWEST.COM

Beaverville

BREAKFAST
ALL DAY + NIGHT

LUNCH & DINNER SERVED
FULL BAR! ESPRESSO!

Between North Gay & Gay.
2201 N. Killingsworth, Portland, OR 97217
503.735.4652