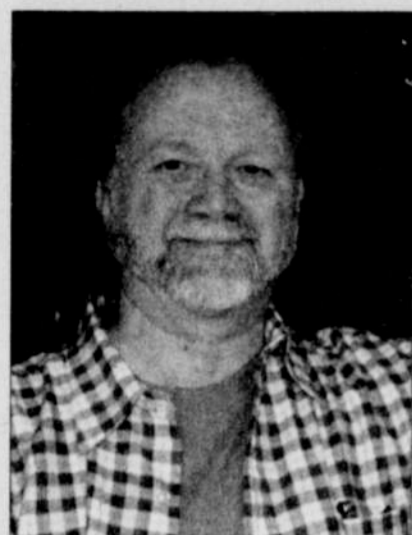


Repeal Watch:

Mabon Misses; Crowe & Co. Look to 2010



MARTY DAVIS

Lon Mabon has emerged to admit defeat on anti-equality initiatives.

The Oregon Supreme Court issued opinions June 27 on appeals regarding Initiative Petitions 144 and 145, two equality-stripping initiatives designed to repeal the Oregon Family Fairness Act and Oregon Equality Act, respectively. The court's opinion responded to several of the points made by both the American Civil Liberties Union and Basic Rights Oregon in their appeals, and essentially returned the initiative petitions to the attorney general for further revisions.

But the opinions came too late to be of help to anti-equality activists across the state. As reported June 11 on the *Just Out* blog, the group of anti-equality legislators and activists in support of the initiatives—David Crowe's "Concerned Oregonians" among them—has already admitted defeat in this round of initiative petitions and has begun focusing its energy and resources on battles for refiled initiatives into 2010.

Meanwhile, erstwhile anti-gay crusader Lon Mabon emerged from obscurity to announce the looming failure of two anti-gay initiatives he filed in 2006 that were aiming for the 2008 ballot: IP 22 (the "Public Decency Act") and a lukewarm rehash of 2000's Measure 9, IP 23 ("Student Protection Act 2008"). Both initiatives were filed in May 2006, and IP 23 began the signature-gathering process in July 2006, with IP 22 starting circulation in January 2007.

But even with two years to achieve the required 82,769 signatures for IP 22, and a year and a half to gather 110,358 signatures for IP 23, Mabon admits that he made a misfire and that both initiatives will fail to achieve the required signature levels by the July 3 deadline.

"I don't think we're going to make it," Mabon said, adding that "there would have to be an unprecedented response in the next few weeks" to meet the signature standards for both petitions.

—Stephen Marc Beaudoin

tips and special considerations on basic types of insurance. The new information for domestic partners builds on four life situations: young singles, young families, established families and seniors.

The association commissioned a nationwide survey in March among domestic partners to gauge their knowledge of insurance issues. Research was also compiled on consumers in the three other life situations for which new Insure U curriculum has been created: single parents, the military and grandparents raising grandchildren.

The study found that 49 percent of domestic partners said they have no formal documentation providing evidence of their relationship. Only 47 percent of domestic partners said they had plans

ations were both partners listed on the policy. Of those polled, 73 percent of domestic partners said they had homeowners or renters insurance. Of those, only 59 percent indicated that both partners were listed on the policy.

For more information about Insure U call 866-470-6242 or visit www.naic.org/state_web_map.htm. For Oregon-specific questions call 888-877-4894 or visit www.insurance.oregon.gov.

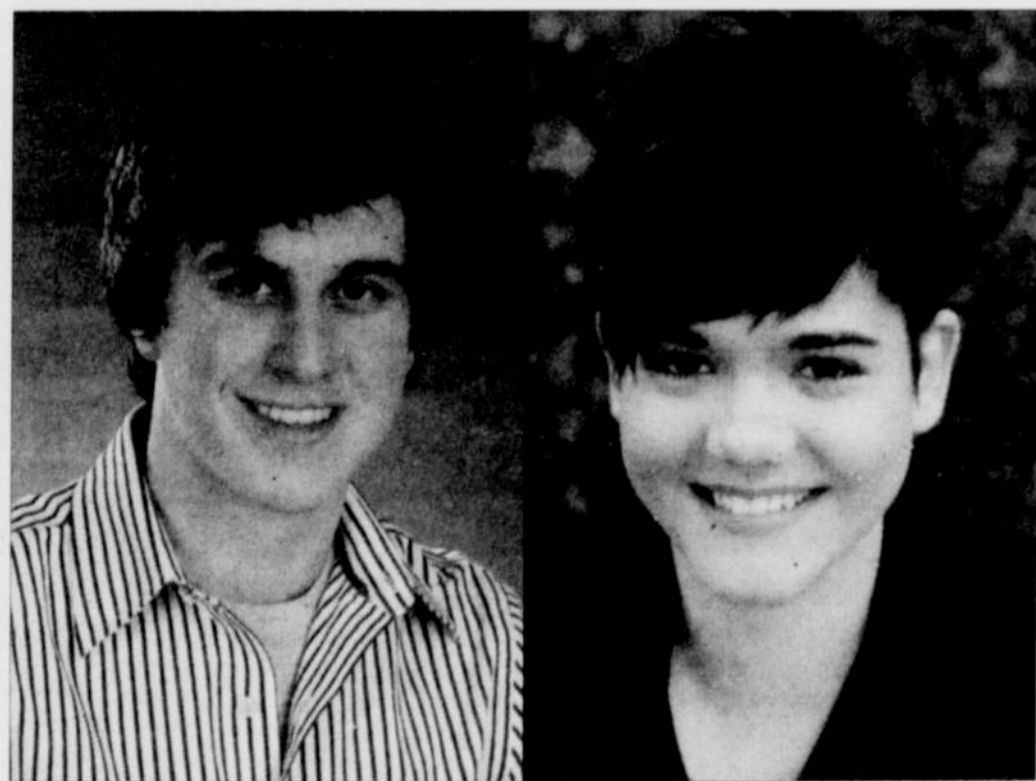
Queer and Allied Students Awarded PFLAG Scholarships

Parents, Families and Friends of Lesbians and Gays (PFLAG) announced June 4 that it awarded 13 scholarships totaling more than \$30,000 to students across the country—and one at a U.S. military base in Japan—who have made significant contributions to equality in their schools and communities.

Two recipients, Michael Tofte and Sage Trail, are from Oregon.

Tofte has been active in his school's

GLBT Youth Group and served as captain of his school's debate team, where he has won several awards in public debate. He has also been active in food and toy drives for the needy of his com-



Michael Tofte (left), an active queer youth group member from Eugene, and Sage Trail, a queer and animal rights activist from Ashland, are PFLAG scholarship recipients.

that allowed coverage of their partner.

About 49 percent of domestic partners do not have health care proxies for their partners. Also, 71 percent of domestic partners with auto insurance shared one or more vehicles with their partner. Of those, in only two-thirds of these situ-

Willamette Financial Group, LLC

Together, let's create a personalized strategy for your goals and dreams, whether

- ◆ planning for your retirement
- ◆ evaluating your current portfolio
- ◆ managing your inheritance
- ◆ saving for your children's education
- ◆ managing distributions from your retirement accounts
- ◆ utilizing unique planning strategies for singles and same gender couples
- ◆ aligning your financial goals with your social and environmental values.

Before making any investment decisions, call . . .

Floreid Walker



Committed to client success since 1987

Financial Planning Strategist
Retirement Income Distribution Strategist
Willamette Financial Group
3529 NE Broadway, Ste 101
503.445.9390 ext.101
floreid@wfgadvisors.com

www.wfgadvisors.com **PABA**

* Floreid Walker is an Investment Representative offering Securities and Investment Advisory Services through AIG Financial Advisors, Inc., a registered broker-dealer and SEC registered investment advisor. Member FINRA/SIPC.

THE BIGGER THE EARS
THE CLOSER TO GOD

adorn



TATTOOS AND BODY PIERCING

20% off of plugs
1" or over until June 30th
plugs featured in ad reigncustomdesign.com

east 503.232.6222
26th and Belmont

west 503.292.7060
9217sw bv hill hwy

www.adornbodyart.com

Westside Florist



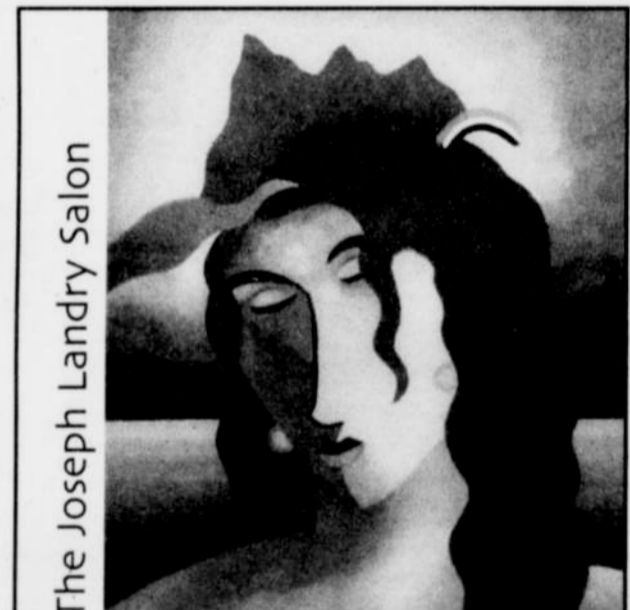
Our professionals
will arrange
your delivery

YOUR DOMESTIC PARTNER

Don Duncan
owner

(503) 642-9992
1-800-356-1884

Aloha Market Centre
20455 SW TV Highway
www.westsideflorist.net



The Joseph Landry Salon

602 SE 38th Ave.
Portland, OR 97214
503.231.3922
Wed - Sat

PAUL MITCHELL

PROVIDING SOCIAL WORK AND NURSING MEDICAL CASE MANAGEMENT TO PEOPLE LIVING WITH HIV/AIDS SINCE 1995



PARTNERSHIP PROJECT

Serving 1200 individuals a year in the Portland 4-county area. Working to keep you insured, in medical care and in contact with the services you need!

SERVICIOS DISPONIBLES EN ESPAÑOL

For intake scheduling, information and referral,
call our intake team at

503-517-3590

www.ohsu.edu/partnership



Continued on Page 11