

Sexual minority business owners interested in applying for next year's award can e-mail business award@nglcc.org to be notified when next year's application is available.

### Volunteer to Party

Elder Resource Alliance, part of Friendly House's senior program, works to enhance the lives of older gay, lesbian, bisexual, transgender, questioning and intersex community members through education, advocacy, outreach and resource development.

ERA is looking for volunteers for its holiday party from 2 to 5 p.m. Dec. 5. Volunteers are needed from 1 to 6 p.m.

Volunteers are welcome to work the entire event or just a shift. Duties include setting up tables, chairs and food; decorating the room; serving food; socializing with seniors; and cleaning up. They are asked to distribute fliers around town in advance of the event.

To sign up call 503-228-4391 or e-mail volunteer@friendlyhouseinc.org or eracoordinator@yahoo.com.

### Gay Candidates Victorious

Dozens of openly queer candidates running in municipal and state legislative races across the country won their elections Nov. 6, according to the Gay & Lesbian Victory Fund.

Of the record 71 candidates endorsed by the group in 2007, at least 31 won their races on Election Day, while 10 were elected earlier this year. At least three more endorsed candidates received enough votes to advance to runoff elections.

Two of those winners were Seattle City Commissioners Tom Rasmussen and Sally Clark.

Victory Fund president Chuck Wolfe said the growing number of out candidates demonstrates the gay community's increasing involvement in electoral politics. "This is the path to change. We are not content to sit on the sidelines and hope that others do the right thing for our community. We will step up and lead the fight for a more equal and fair America, and we will win."

The Victory Fund's 71 endorsements set a new record for an odd-numbered year with no scheduled federal elections. The group endorsed 88 candi-

dates in 2006, and it expects to endorse more than 100 candidates in 2008, according to Wolfe. He added that planning has already begun for next year's races.

"2008 will be another record-breaking year for gay candidates, and they'll need help to counter the inevitable attacks from anti-gay hate groups. We'll be ready to fight," Wolfe said.

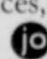
### Quest Expands Services

Since last May, Quest Center for Integrative Health, a nonprofit health care clinic located on East Burnside Street and 29th Avenue, has received more than \$300,000 in grant funding to expand services for low-income, medically underserved people living with chronic and life-challenging illnesses.

The largest award, more than \$130,000 to fund a three-year yoga and exercise program for people living with disabilities, came from the Department of Education. "Yoga greatly helps people dealing with depression and other physical disabilities. As a therapist, I combine both discussion and movement in my classes," said Debbie Flittner, mental health therapist and certified yoga teacher at Quest Center. "I'm thrilled that we now have more funding for our program that will be accessible to many people who otherwise can't afford yoga."

With support from recent grants totaling more than \$120,000 from both Collins Foundation and Meyer Memorial Trust, Quest Center also launched in August an abstinence-based, outpatient program called Finding and Sustaining Recovery for people dealing with chemical addiction. This program uses an integrative approach to help people develop and maintain clean and healthy lifestyles through acupuncture, groups, one-on-one counseling, exercise, nutrition and peer mentoring.

"It's common for people who are low-income and living with depression, HIV, cancer or other chronic illnesses to develop addiction to drugs and alcohol," said David Eisen, executive director at Quest Center. "As a community-based integrative care clinic, we felt these services were important for us to offer. After just a couple of months, Finding and Sustaining Recovery has taken off, and we have over 14 people actively enrolled."

Quest Center treats all people, regardless of their financial situation. It offers traditional and holistic medical, mental health and support services in a community-based setting. It has many community workshops and classes and has programs specifically for people living with HIV/AIDS, breast cancer, mental health disorders and chemical dependency. Quest Center also sees clients who are private-pay or have health insurance to cover services. Low-income clients are able to apply for financial assistance, with much of the funding for these services coming from grants and individual donations. For more information or for a complete list of services, visit [www.quest-center.org](http://www.quest-center.org). 

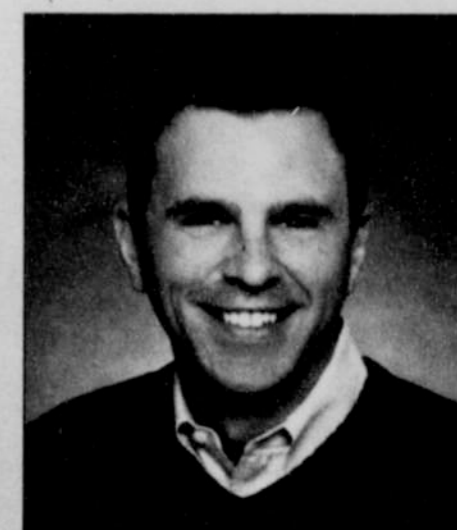
By JAYMEE R. CUTI and JULIE SABATIER



Seattle City Commissioner Tom Rasmussen (center) was re-elected with support from the Gay & Lesbian Victory Fund.

### JOEL HAMLEY

Broker, ABR  
The Real in Realtor



Now That You're  
Domestically Partnered,  
Settle Down!  
And Let Me Help...

Office: 503-238-1700, ext. 630

Mobile: 971-506-9499

[joelhamley@meadowsgroup.com](mailto:joelhamley@meadowsgroup.com)



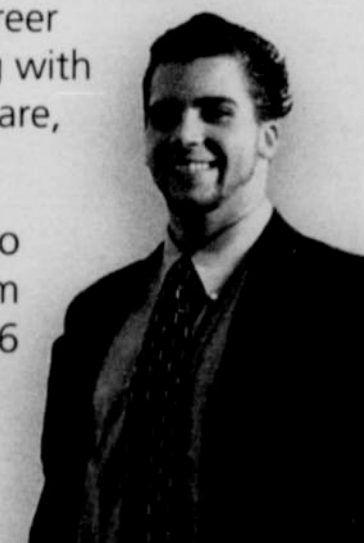
[www.JoelHamley.com](http://www.JoelHamley.com)

## HIRING A MOTIVATED SALES REPRESENTATIVE!

If you are ready for a dynamic career in health services sales & marketing with a company that honors who you are, we want to talk to you!

Please forward your resume to  
[HR@signaturehospice.com](mailto:HR@signaturehospice.com)  
or call 800-936-4756

*Signature*  
HOSPICE



### Diane Flanders BMW Client Advisor

I look forward to providing you with a buying and ownership experience that can't be found anywhere else.

Contact me today to arrange a test drive.

*Diane*

### Rasmussen BMW

SW Jefferson at 20th Portland, OR  
(503) 226-0380 • Toll Free 1-800-ASK-4BMW  
[dianef@rasmussenbmw.com](mailto:dianef@rasmussenbmw.com)

