

on stage

Artists Repertory Theatre presents *House and Garden*, two interlocking plays about a highly comic series of catastrophes and intertwined relationships during a luncheon and a midsummer maypole fête, performed simultaneously on two separate stages with a single cast that dashes madly back and forth, through Oct. 14. (Call for times. 1516 SW Alder St. \$20-\$47 from 503-241-1278.)

Arts Equity presents queer playwright Edward Albee's *Seascape*, a fascinating dialogue between a middle-aged couple and two lizards seeking life on the land, through Oct. 13. (Call for times. 606 Main St., Vancouver, Wash. \$10-\$24 from 360-695-3770.)

Carla Damaris Grant presents *Sun-Clothed Woman*, her performance piece that uses songs of the past, dreams of the future and a No. 8 wrench to address the end of the world, Sept. 21-Oct. 7 at Hipbone Studio. (8 pm Friday and Saturday, 6 pm Sunday. 1847 E Burnside St. #104.)

Classic Greek Theatre of Oregon presents *Peace*, based on the play by Aristophanes, Sept. 8-30 at Reed College's Cerf Theatre. (Call for times. 3203 SE Woodstock Blvd. \$10-\$20 from Brown Paper Tickets.)

CoHo Productions presents the second *24 Hour Play*, in which four scribes and 30 thespians stay up all night writing and rehearsing four original one-acts, Sept. 9. (8 pm. 2257 NW Raleigh St. \$20 from 503-220-2646.)

Defunkt Theatre presents *The Lesser Magoo*, a funny, thought-provoking play about a woman working at a cutthroat office whose supervisor invites her to a dinner party, through Oct. 13 at Back Door Theater. (8 pm Thursday-Sunday. 4319 SE Hawthorne Blvd. \$10-\$15 from 503-481-2960; Thursdays and Sundays are "pay what you will.")

Fever Theater presents *Arose (A Creation Story)*, a collaborative performance inspired by Clarice Lispector's *Stream of Life*, through Sept. 8 at Goldsmith Performance Lab. (8 and 9:30 pm. 20 NW Fifth Ave. \$8-\$50 sliding scale from 503-381-6814.)

Joan Freed presents *Chocolate Confessions*, her one-woman musical comedy about a chocolate shop owner and her mixed assortment of hilarious customers, Sept. 14-Nov. 18 at World Trade Center Theater. (7:30 pm Friday and Saturday, 2 pm Sunday. 25 SW Salmon St. \$29 from 503-784-6220.)

Lakewood Theatre Company presents *Thoroughly Modern Millie*, based on the Oscar-winning movie about a Kansas woman who takes New York by storm during the Roaring '20s, through Oct. 21. (Call for times. 368 S State St., Lake Oswego. \$23-\$25 from 503-635-3901.)

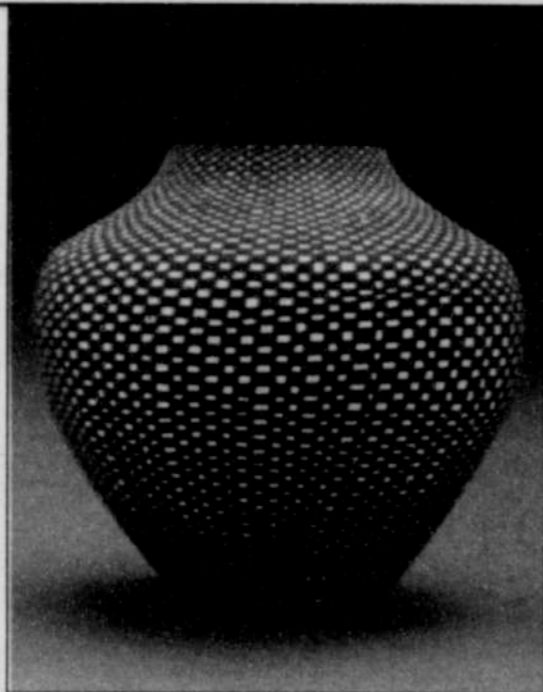
Miracle Theatre presents the Northwest premiere of *Mariela in the Desert*, a deadly mystery about what happens to a family when creativity is forced to dry and wither away, Sept. 21-Oct. 13. (7:30 pm Thursday, 8 pm Friday and Saturday, 2 pm Sunday. 525 SE Stark St. \$15-\$20 from 503-236-7253.)

Northwest Classical Theatre Company presents *A Midsummer Night's Dream*, William Shakespeare's naughty, irreverent tale of lovers, fairies and makers of plays, through Sept. 30 at Shoebox Theater. (7 pm Thursday-Saturday, 2 pm Sunday. 2110 SE 10th Ave. \$12-\$18 from 971-244-3740.)

Our Shoes Are Red/The Performance Lab presents the searing and ascerbic one-man show *Thom Pain (Based on Nothing)* through Sept. 16 in Room 115 at Portland State University's Lincoln Hall. (7:30 pm Thursday-Sunday. 1620 SW Park Ave. \$5-\$10 from 503-333-6096.)

Pack of Others presents *Fluid*, a solo show by Brooklyn theater artist Erika Kate MacDonald featuring heartwarming true tales of new love and new sex; lessons from "Betty the Bisexual," a steely professor of cultural linguistics; and an anti-lullaby by a bad-ass teenage lesbian rap star—through Sept. 8 at Becker Studios. (8 pm. Southeast Ash Street and Sixth Avenue. \$10 donation.)

p.boy productions presents *Boys Will Be: Alone in Our Rooms*, an interactive explo-



Sandra Victorino is on display as part of Quintana Galleries' 35th anniversary exhibition through Oct. 27.

ration into the lives of boys and the discoveries made while alone in their rooms featuring *The Gender Fluids* with installation artist Dallas Oliver, Sept. 21-29 at Wonder Ballroom. (8 pm Friday and Saturday. 128 NE Russell St. \$10.)

Play After Play presents *The Boatman's Flute*, a children's play about a mandarin's daughter enchanted by a man who is not what she thought, followed by an opportunity for kids to interact with the performers, Sept. 8-23 at Brooklyn Bay. (10 am Saturday, 2 pm Sunday. 1825 SE Franklin St. Bay K. \$6 from 503-772-4005.)

Portland Opera opens its 2007-08 "Great Women of the Stage" Season with Bizet's *Carmen* Sept. 21, 23, 25, 27 and 29 at Keller Auditorium. (7:30 pm. 222 SW Clay St. \$41.75-\$147.75 from box office or Ticketmaster.)

Readers Theatre Repertory presents *Love Is a Many Screwed-Up Thing*, two short plays about damaged people yearning to connect, Sept. 14 and 15 at Blackfish Gallery. (8 pm. 420 NW Ninth Ave. \$8 from 503-295-4997.)

Skinner/Kirk Dance Ensemble presents gay choreographer Eric Skinner's abstract piece addressing the strength, grace and momentum that drive our existence in urban living, set to the moody music of Brian Eno and Yo-Yo Ma, Sept. 20 and 22 at BodyVox Studio. (7:31 pm Thursday, 7:31 and 9:01 pm Saturday. 1300 NW Northrup St. \$10-\$20 sliding scale from skinnerkirkdance@hotmail.com.)

Slocum House Theatre presents *Dearly Beloved*, in which three sisters throw a gossip-generating wedding in their small Texas town, through Sept. 30. (8 pm Friday and Saturday, 4 pm Sunday. 605 Esther St., Vancouver, Wash. \$8-\$10 from 360-696-2427.)

Theatre Vertigo presents *A Doll's House*, Henrik Ibsen's classic in which a woman's forgery of her husband's signature sets into a motion a series of events that call into question the validity of their marriage, through Sept. 22 at Theater Theatre. (8 pm Thursday-Saturday. 3430 SE Belmont St. \$15 from 503-306-0870; Thursdays are "pay what you will.")



A Midsummer Night's Dream celebrates the joy of finding unexpected desire.

How to Shake Your Willy, or Who Doesn't Like to Puck Around?

Oh, foolish mortals! Oh, naughty pixies! How often our paths cross, even nowadays as mismatched lovers continue to traipse into the forest only to end up the playthings of a squabbling fairy court, which through its spritely servants causes mischief before making amends. Yet with the opening of Northwest Classical Theatre Co.'s *A Midsummer Night's Dream*, it's once more into the Bard's breaches, dear friends, once more!

But wait, that's fire for another canon. Here, the Avon man calls out this clarity: "The course of true love never did run smooth." And this solstice fancy presents arguably one of Shakespeare's more tried-and-twisted trysts.

But what makes the ass-chasing play so gay? Well, director Glenn Scofield Williams, for one. A freelance writer, theater director and actor, Williams was a founding company member of the famed Tygres Heart Shakespeare Company, where he served as associate artistic director for six years.

Midsummer, he says, tames the duality of dueling genders within our hearts. And although queer characters are not so obvio in folio, Williams suggests it only takes a pair of open-hearted eyes to see the fag for the forest, or rather the fruit of Flute—a man who plays a woman in the play-within-a-play with growing affection for his fellow actor (who is, perhaps not so coincidentally, named Bottom).

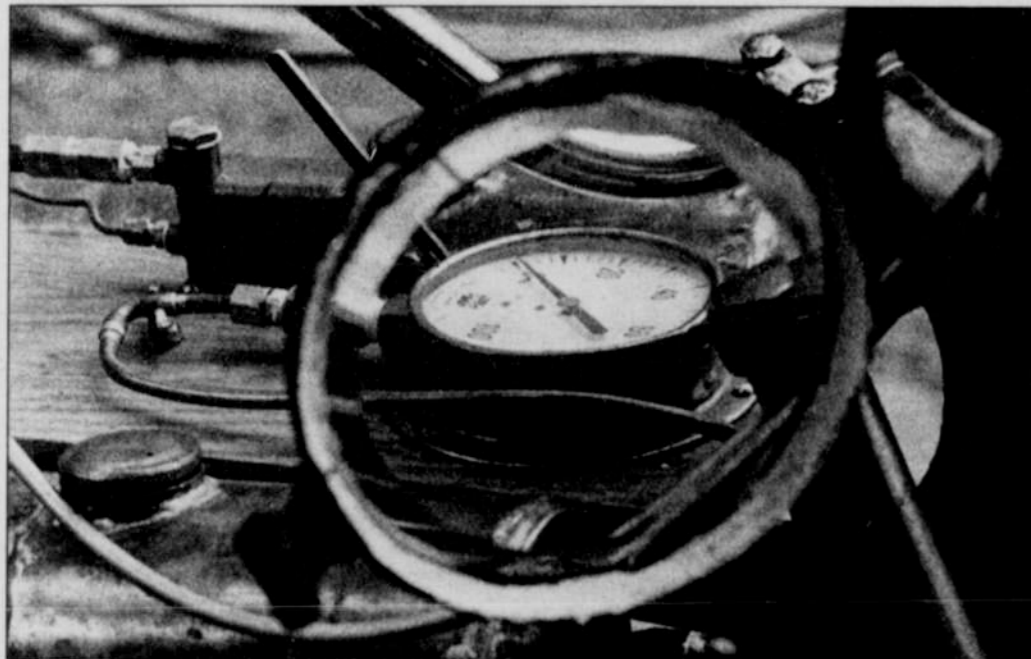
"Shakespeare is pointing to the way young men and their leading men would fall for each other offstage all the time, even as they do today," says Williams. "Flute, in the course of exploring playing a woman, finds the inner female and, in so doing, finds his inner identity. His character of Thisbe becomes, in some ways, truer than himself."

There's that "true love" thing again or, as Williams puts it, the joy and the seriousness of finding—and honoring—unexpected desire.

"There is no homophobia expressed in this world," adds Williams: "Where one could choose as a director to make all sorts of 'fag' jokes throughout, we choose instead to make a world where love is encouraged wherever it's found. And there is a bawdiness in this production as well that I think comes from a queer sensibility."

A Midsummer Night's Dream plays 7 p.m. Thursdays, Fridays and Saturdays and 2 p.m. Sundays through Sept. 30 at Shoebox Theatre, 2110 S.E. 10th Ave. Tickets are \$12-\$18 from 971-244-3740.

—Timothy Krause



The Press Club exhibits Pasha's photographs through Sept. 30.

Eye Exams Eyeglasses Contact Lenses Sunglasses Eye Exams Eyeglasses Contact Lenses Sunglasses

blink

sun/mon 12-6, tue-sat 11-8
eye exams every day

clinton & se 21st ave
503.546.2565
blinkpdx.com

Eye Exams Eyeglasses Contact Lenses Sunglasses

Discover Paradise!

State-of-the-art VIDEO ARCADE
100 channels of all new releases
New DVDs starting at \$4.99
72-hour rentals
Toys, novelties, magazines and more ...

Paradise Video
Upscale Adult Video Store
503.255.9414

14712 SE Stark Street, Portland • Open 24/7 • Over 18 only