

Classifieds

503-236-1253
promote your business here

ALL'S WELL

Just Out's Guide to Physical Health, Fitness and Well Being

LICENSED MASSAGE THERAPISTS (LMT)



ROLFING®
STRUCTURAL INTEGRATION
Benjamin Eichenauer, CR
CHANGE YOUR BODY... CHANGE YOUR LIFE!
503.280.5665
WWW.ROLFINGPDX.COM

THERAPEUTIC MASSAGE FOR MEN

* Stress Reduction * Pain Relief * Swedish * Deep Tissue
BEAVERTON INCALL/OUTCALL
503-380-6196, 9 to 7
Lee David Serenethos, LMT #5756
sirmassage.com

Massage By Maury

Have table... will travel!

(503) 816-5704

Maury Evans

www.MassageByMaury.com



justoutpersonals.com

Laurelhurst Massage

Open 7 Days a Week
European Showers • Dry Sauna
Steam Room • 2 Man - 4 Hand Massage
Individual & Couples Massage



Greg Mitchell, LMT
(Lic #7750) 503.380.4324



Rick Sullivan, LMT
(Lic #6099) 503.421.5172

www.LaurelhurstMassageTherapy.com

NATUROPATH



Effective Natural Medicine
Acute & Chronic Health Problems
Women's Health /
Transgender Health

Suzanne Scopes, ND
Experienced • Knowledgeable • Caring

503-230-0812 316 NE 28th Ave - Circle Healthcare Clinic
www.drscopesnaturalhealthcare.com

PHYSICAL THERAPY



BACK IN ACTION
PHYSICAL THERAPY, PC
Ted Ellquist PT, Cert MDT

DOES IT HURT WHEN YOU BEND OVER?

Back in Action
Physical Therapy can help...
• Abolish pain • Prevent surgery

www.BackInActionPT.com
2538 NE Broadway St
503-445-4936



ANTIQUES

Japanese Art and Antiques



503-233-9224
www.wabigallery.net
wabigallery@aol.com

3206 SE Hawthorne Blvd. Portland, OR 97214

ATTORNEYS

REDDEN & FINDLING PC

ATTORNEYS AT LAW

DOMESTIC PARTNERSHIPS
ADOPTION • WILLS • REAL ESTATE
BUSINESS • DIVORCE • TAX

MICHAEL REDDEN
MARLENE E. FINDLING

2720 NE 33RD AVENUE
PORTLAND, OREGON 97212
PHONE: 503-288-3133
www.reddenfindling.com

Bradley J. Woodworth & Associates, P.C.

Attorneys at Law

*Serving our community
with insight, professionalism
and experience since 1985*

- Business Transactions
- Incorporation
- Real Estate
- Wills, Estates, Trusts
- Conservatorships
- Insurance Law
- Divorce & Custody
- Unmarried Couples
- Criminal Law & DUI
- Accidents & Injury Claims
- Trademark
- Copyright

Bradley J. Woodworth, Attorney
Lake Perriguet, Attorney

Free Consultation by Phone

503/226-4644

info@woodworthlaw.com

1020 SW Taylor, Suite 360

Portland, OR 97205



ATTORNEYS

JMV

The Law Office of John V. McVea, P.C.

See my display ad for more information

503-223-1708
www.mcvealaw.com

The Morgan Bldg
720 SW Washington, Suite 750



Hala Gores, P.C.

Attorney at Law

Personal Injury

503/295-1940

See my display ad in this issue



Some women can't say the word lesbian...
even when their mouth is full of one.
- KATE CLINTON

AARON VARHOLA ATTORNEY AT LAW

CHAPTER 7 AND 13 BANKRUPTCIES

A Debt Relief Agency

503.546.7913

avarhola@integraonline.com

1020 SW TAYLOR ST. SUITE 230

DENISE L. STERN

Attorney-at-Law • Arbitrator • Mediator

- Business Law, Corporations, LLCs
- Wills and Probate
- Family Issues and Adoptions
- Real Estate & Litigation

20 Years Experience
Past Chair of Oregon State Bar Litigation Section
Member, Oregon and Washington Bars

Westmoreland Office

(503) 231-9340 ■ ■ ■ ■

LAW OFFICES OF RICHARD B. SCHNEIDER, LLC

**FOCUSED EXCLUSIVELY
ON ESTATE PLANNING
AND RELATED MATTERS**

ATTEND A
FREE
SEMINAR!

REGISTER
ONLINE:

www.rbsllc.com



- Wills ■ Living Trusts
- Powers of Attorney
- Health Care Planning
- Advanced Estate Planning
- Probate and Trust Administration
- Domestic Partnership Agreements
- Business Formation
- Financial Planning Assistance

503.241.1215

www.rbsllc.com

2455 NW Marshall St. Suite 11
Portland, OR 97210
information@rbsllc.com

COMPUTERS



- Increase pleasure
- Decrease frustration
- Improve productivity



MacRory.Com
(360) 695-6929

I optimize Macs & teach people to use them.

COUNSELING

GLBTQI COUNSELING-INDIVIDUALS, COUPLES
Come see me for help coping, healing, growing.
Doctoral level therapist. Sliding scale available.
Dr. Jamie Pettus www.mytherapistsaid.com (5/18)



Patty Newland, MSW
Licensed Clinical Social Worker

Together, we can create a nurturing,
therapeutic environment where you can
safely push your growing edge.

(503) 231-0933
2311 E. Burnside #204, 97214

Blue Cross
Preferred
Provider



Serena Barton, LPC
971-404-7664

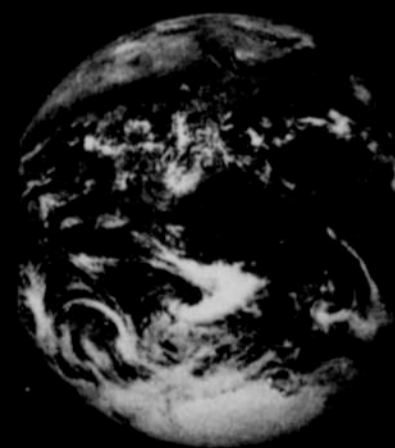
www.artofyourlife.com

Counseling for Adults\Children
Creativity Groups & Workshops

www.justout.com

MARKET YOUR BUSINESS TO THE COMMUNITY AND TO THE WORLD

Become part of the GLOBAL E-DIRECTORY at www.justout.com
Call 503-236-1253 to sign up now



Counseling:

Respect and Compassion
serving individuals, couples, children

Dolores Maggioro

LCSW, ACSW, Diplomate
503-866-0544
www.dmaggioro.com

over 25 years experience
with children & families
at home and in schools