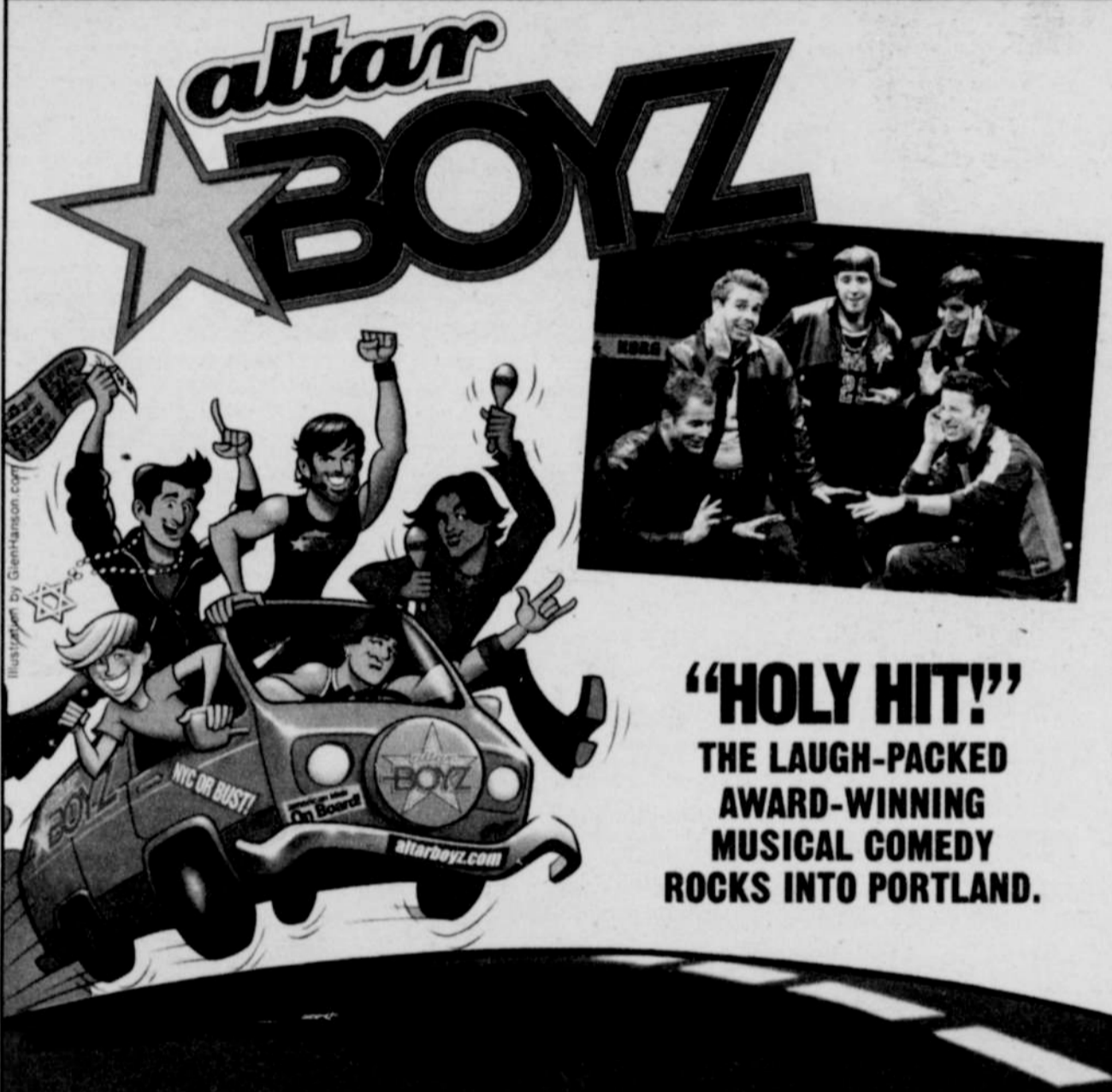


WINNER!
 BEST OFF-BROADWAY MUSICAL
2005 OUTER CRITICS CIRCLE AWARD
WINNER!
 FAVORITE LONG-RUNNING OFF-BROADWAY SHOW
2006 BROADWAY.COM AUDIENCE AWARD



"HOLY HIT!"
 THE LAUGH-PACKED
 AWARD-WINNING
 MUSICAL COMEDY
 ROCKS INTO PORTLAND.

Fred Meyer
BROADWAY **ACROSS AMERICA**
 PORTLAND

JAN 30-FEB 4 • NEWMARK THEATRE

503-790-ARTS • BroadwayAcrossAmerica.com • 503-241-1802
 ticketmaster M-F/9-5

Groups 10+ 503-321-5251

Tickets subject to agency convenience charges.



K103

The Hilton Family
 be hospitable



**DINNER
 AND A
 MOVIE?**

WE'VE GOT IT ALL FOR YOU.
 RESTAURANTS, A THEATER,
 AND
justoutpersonals.com

2006-2007 PROFILE THEATRE TENTH ANNIVERSARY SEASON

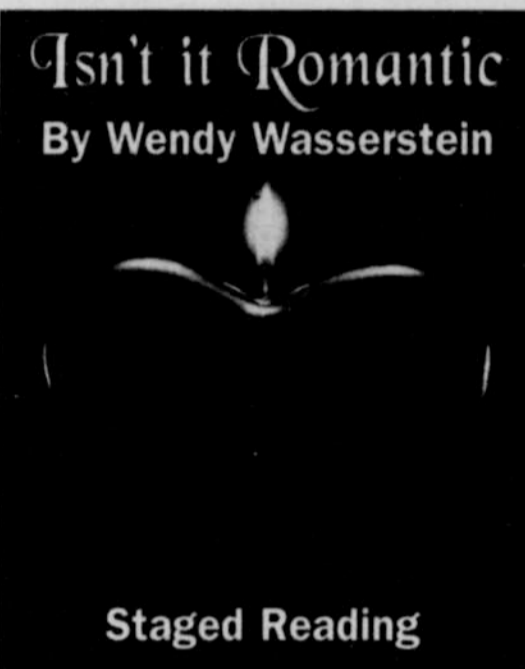
*"Serious issues and serious people can
 be quite funny."*

—Wendy Wasserstein



The Heidi Chronicles
 By Wendy Wasserstein

January 13 - February 11
 Low Price Previews: January 10 - 12
 Thurs. - Sat. 8 p.m., Sundays 2 p.m.



Isn't it Romantic
 By Wendy Wasserstein

Staged Reading

January 28 - February 4
 Sundays - Wednesdays at 7:00 p.m.



For tickets call 503.242.0080 or
 order online at www.profiletheatre.org
 All performances at Theater! Theatre!
 3430 SE Belmont Street

THE KINSMAN FOUNDATION MELER THEATRE The Culture Foundation



ARE YOU SUFFERING FROM HIV-RELATED PAIN SUCH AS TINGLING, "PINS AND NEEDLES" OR BURNING SENSATIONS IN BOTH FEET?

If so, you may be eligible to participate in a research study of an investigational patch for the treatment of HIV-associated neuropathy. The patch is applied only once for 30 or 60 minutes, then removed.

To be eligible you must:

- Be a male or female 18 years of age or older
- Have documented diagnosis of HIV infection
- Have experienced mild to severe pain, burning or discomfort in both feet for at least 2 months

Qualified participants will receive study medication and examinations at no cost.

Fanno Creek Clinic

2400 SW Vermont St. • Portland, OR 97219
 Lisa Zeigler 503-452-0915 ext. 30