



Larry Laughead (left) and Steven Lien bring men's underwear to a new level of chic.

of Embers, Lien says the couple were looking for a new venture that was not Internet-based. "We wanted to be part of the community where customers could come in and feel and experience designer fashion. This is really important because many of our products are made of unique fabrics like bamboo, soy, hemp and milk fiber," says Lien.

Under U 4 Men carries the complete line of C-IN2 men's wear as well as products from 18 other designer and fashion lines including Papi, Boiish, G-Storm, Pulse, Wax, Artificial Flavor, Just Us Boyz and Julio from Spain.

The concept for the store developed when Lien and his partner of 20 years, Larry Laughead, traveled through Europe and Asia. "Men's underwear stores similar to what U.S. women have with Victoria's Secret are fairly common there," he says.

Lien and Laughead are supporters of Basic Rights Oregon and the Human Rights Campaign and were "one of lucky 3,000 couples who got married in Multnomah County." A former owner

"The store will definitely appeal to the gay male, where a spouse can purchase a gift for his significant other that he'd like to see him in. We also have SHOWit technology products for guys hitting the clubs who want to show off a little," Lien adds.

This new downtown boutique is sure to be a destination, whether you're looking for underwear, swimwear, sleepwear, male body care or live-in-store models!

northwest

Portland Ranks as Fourth-Gayest City

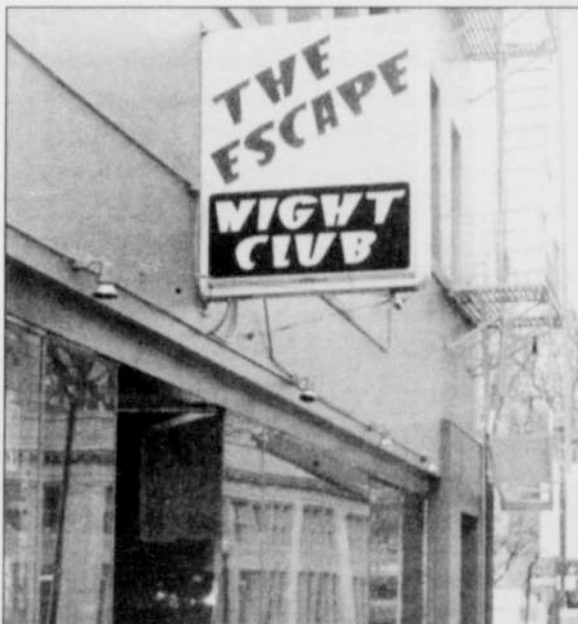
The release of new data in October allowed a researcher from University of California's Williams Institute on Sexual Orientation Law and Public Policy to make new estimates regarding same-sex couples and the queer population in the United States.

According to the report, the number of same-sex couples grew by more than 30 percent from 2000 to 2005. The report states that this rapid increase most likely results from larger numbers of same-sex couples willing to report the nature of their relationship to the Census Bureau.

The study also shows that Portland ranks fourth among the 50 largest U.S. metropolitan areas with the greatest estimated percentage of gays in the adult population. Gay, lesbian and bisexual adults represent an estimated 8.8 percent of the population around Portland, Beaverton and Vancouver, Wash. San Francisco ranks first with 15.4 percent, followed by Seattle and Boston.

Senior research fellow Gary Gates used data on same-sex couples from the U.S. census and the American Community Survey to generate estimates on state and local queer populations. Analyses from the National Survey of Family Growth found that 4.1 percent of adults between 18 and 45 identify as gay, lesbian and bisexual. Gates then used that percentage to arrive at 8.8 million gay, lesbian and bisexual adults nationwide. Assuming the proportion of same-sex couples living in a given locality is the same as that of all queers in that area, Gates multiplied 8.8 by the percentage of same-sex couples to estimate the size of the population.

While the study does not suggest that the number of gays, lesbians and bisexuals in the country is growing, it does reveal that more Americans are willing to come out and be counted. It also provides updated estimates that policymakers can use to



In the hands of queer college students, odd Fridays at the Escape Nightclub will never be the same.

more accurately understand and represent sexual minorities.

College Group Raises Money, Good Times

Who knows how to party better than the college crowd? As of November, the Greater Portland Intercollegiate Queer Society has taken over the Escape Nightclub on the first, third and fifth Fridays of every month.

This is about more than just fun. The society receives \$3 of the cover charge each person pays as he or she walks in the door. According to society co-founder and Reed College student Jeff Maguire, the funds given to area college-based queer groups will bolster their presence on their respective campuses.

Reed, Portland State University and Lewis & Clark College "have the most active queer groups and don't need money," Maguire says, but schools like Portland and Clackamas Community Colleges and Linfield College "get between \$50 and \$100 for the entire year. Now I know why these groups on campuses have been doing so poorly."

Continued on Page 10

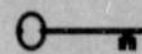


HOME SELLING TIP #4

If you have moved before, you know the energy it takes preparing for showings, keeping the home clean, coordinating care for kids and pets and altering your lifestyle. Proper pricing reduces these demands on you by helping your home sell faster.

Call me so I can help you price your home correctly.

ELISE CAMPBELL



Service is the key . . . it's that simple.

ELISE CAMPBELL
BROKER, GRI, ABR, ePRO
503-307-1353
EliseC@CompassRealty.com
www.EliseCampbell.com
Compass Realty, Inc., 503-698-6988

Willamette Financial Group, LLC

Retirement • Life Insurance • College Planning • Long-Term Care • Sustainable Investing

PABA

Floreid Walker*

Financial Planning Strategist
floreid@wfgadvisors.com



Greg Look*

Financial Specialist
greg@wfgadvisors.com



503-445-9390

3529 NE Broadway Suite 100 • Portland, OR 97232
3550 Liberty Rd. S Suite 230 • Salem, OR 97302

Floreid Walker* is an Investment Representative offering Securities and Investment Advisory Services through AIG Financial Advisors, Inc., a registered broker-dealer and SEC registered investment adviser. Member NASD/SIPC.
Greg Look* is a Registered Representative offering Securities through AIG Financial Advisors, Inc., a registered broker-dealer. Member NASD/SIPC.



Gert Boyle,
Chairman

I'VE WORKED
THIS CORNER
FOR 10 YEARS.

Join me December 1st - 10th, 2006 at the
Columbia Sportswear Company Flagship Store
to celebrate 10 years on Broadway and Taylor

10 CHARITIES WILL BENEFIT • 10 DAYS IN DECEMBER • 10% OF ALL SALES WILL BE DONATED



Columbia
Sportswear Company



911 SW BROADWAY, 503 226 6800
www.columbia.com
HOLIDAY HOURS, MON - SAT 9-8, SUN 10-6