

outstanding

Kimberlee Van Patten Throws a Bash

Since folding the wildly popular Peacock in the Park, Kimberlee Van Patten has used her party-planning skills to launch a new production company, Vivid Imagination.

According to Van Patten, her gift to local entertainment is elbow grease. "That's my forte, all the behind-the-scenes coordination stuff," she said.

That amounts to reserving ballrooms, hiring caterers and performers, building sets and stages, advertising and ensuring that light, sound and special accommodations are in place for every event she produces.

Most recently, Vivid Imagination coordinated Darcelle's magnificent 75th birthday bash at Melody Ballroom with entertainment by Sharon McNight, Michael Allen Harrison and the Sonny Hess Band.

Sticking with a queer bend to all of her projects to date, Van Patten has also produced two plays at Theater Theatre—*Mommie Queerest* and *The Facts of Life: The Best Little Whorehouse in Peekskill*—and brought Mandonna, an all-male Madonna cover band, to Portland twice.

"I love sitting back and watching 5,000 people enjoy the show and knowing that I had a hand in putting it together," Van Patten said.

She continues to own the nonprofit organization Peacock Productions, which annually administers the Audria M. Edwards Scholarship Fund, with applications due in May.



MARTY DAVIS

Event coordinator Kimberlee Van Patten recently threw Darcelle's 75th birthday party.

Van Patten's day job also requires gobs of coordination and organizing. She works as an emergency response duty officer for the Oregon Department of Environmental Quality, where she dispatches officials to clean up hazardous spills.

Until three years ago, Van Patten says she was up to her eyebrows in the Imperial Sovereign Rose Court, as a past board member and president. She was also Rose Emperor XXIII.

Van Patten derives joy from drawing acts to town. "Being able to bring them to Portland and introducing them to the city is just a real thrill."

—Jaymee R. Cuti

just asking

What was your most enjoyable recent trip within 200 miles?



TIM HEALEA
Q Center Board Member
Head Baker, Pearl Bakery

"Last February, my partner and I and our two boys went skiing and snowboarding at Mount Bachelor. The great thing is no one else was there since it was such a bad ski season."



ANDREA CHIOTTI
Cycle Techie

"I went with my sweetheart to Sauvie Island. We rode our bikes around and took pictures of ourselves."



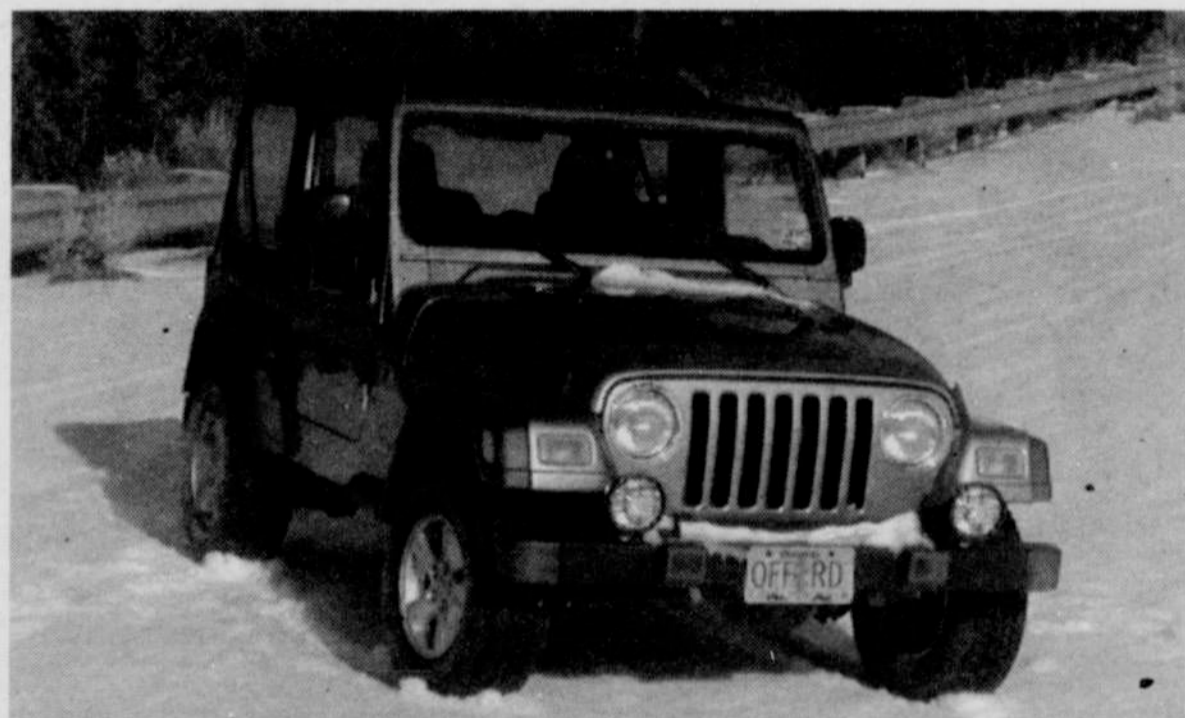
MITCHELL UNDERWOOD
Cast Member at Darcelle XV Showplace

"Puerto Vallarta is my real romantic getaway. Besides that, my swimming pool."



ECOLE VENSKYTIS
Organic Farmer (left)
HEATHER KALIAN
In Other Words Star Volunteer (right)

"We took a Washington trip to Roslyn, because that's where *Northern Exposure* was filmed. We went from Roslyn to Olympia and up the Olympic Peninsula. We got to sleep in our car in parking lots. We just did what we wanted. We didn't have any reservations, any plans."



All-weather Fun and Adventure

Got a job and \$125*? Timberline can send you down the road in a NEW Wrangler.

Winter fun is just a Jeep away, and you'll always get where you're going in the worst weather. Let us show you how our TMQ[®] makes it easy to own yours.

Just call Jim, Russ, Ed or Paul at 503-234-0771 and see how you can build your own Jeep, for your own style and all-weather fun.

*On approved credit. †True Minimum Quote

"Your best buy on any new Jeep is at Timberline or I'll eat my hat."

— Art Laws, Founder



Timberline
CHRYSLER Jeep
DODGE

NE 24th & Sandy • Portland
timberlinedealerships.com

Current Doctor not treating you like the Queen you are?

Bridge City Family Medical Clinic, PC

Most Insurances Accepted



Sexually Transmitted Infections
Pap Smears • Birth Control
Diabetes • High Blood Pressure
Asthma • Physicals • Rashes
Minor Injuries • Ear Infections
Immunizations • Bladder Infections
Colds • Flu • Stomach Problems
By Appointment



Monday - Friday 8:30 - 5:00pm 503.460.0405
2821 NE 58th Avenue (Cross Street Sandy Boulevard) Fax: 503-460-0434
Teri Bunker FNP www.bridgcitymedical.com

Willamette Financial Group, LLC

- ♦ Retirement
- ♦ Life Insurance
- ♦ College Planning
- ♦ Long - Term Care
- ♦ Sustainable Investing

Floreid Walker

3529 NE Broadway STE 100
Portland, OR 97232
503.445.9390 ext.101
floreid@wfgadvisors.com



Greg Look

3550 Liberty Rd. S STE 230
Salem, OR 97302
503.566.7266 ext.114
greg@wfgadvisors.com

Call one of us today for more information!

www.wfgadvisors.com