



eatingout eatingout eatingout eatingout

ME BOTTOM,
YOU TAPAS?



1932 NE BROADWAY
503•288•3333
OPEN LATE

Come Experience a Taste of Northwest



A great place for...
• SPECIAL EVENTS
• BANQUETS
• PARTIES FOR ALL OCCASIONS

And more...
• LIVE MUSIC (no cover)
• FULL BAR
• FOOD SPECIALS
• FRIENDLY SERVICE
• OUTDOOR SEATING
• BREAKFAST
• LUNCH
• DINNER

1000 NW 17th Ave. Portland 503•222•6435
(corner of NW 17th & Lovejoy)

ristorante
fratelli
an italian kitchen

regional italian dinners
Open 7 nights

Sunday-Thursday 5:00-9:00pm 1230 nw hoyt | portland
Friday-Saturday 5:00-10:00pm 503-241-8800
www.fratellicucina.com

Oh m'god!
I just remembered something!


"I told Perry I would make dinner reservations at one of our favorite queer-friendly restaurants today!"




PARISI'S
Gelato • Fudge • Espresso

One Year Anniversary
\$1.00 off
Any Size Gelato
October 18 • 19 • 20

4605 NE Fremont • 503-287-7444
Open Mon-Thurs until 9pm
Fri & Sat until 10pm • Sun until 8pm



Oasis Cafe

Pizza for the people.
Portland's Best Hand-Tossed Gourmet Pizza!

40+ toppings to choose from; six sauces and five sizes, from a single, custom-made slice up to a Jumbo 18" party pizza.

In the heart of the Hawthorne shopping district

Featuring: NW microbrews on tap & desserts by renowned local bakery *Piece of Cake*

3701 SE Hawthorne Blvd. • 503.231.0901 • Delivery available in SE Portland after 5pm



Russell Street
BAR•B•QUE

**We're back,
better than ever.**
**So come in soon -
we look forward
to seeing you.**

Thanks for all your support!

325 NE Russell Street • 503.528.8224 • russellstreetbbq.com

DIVERSIONS



Portland playwright Sam Gregory analyzes repression in *The Confessions of Dr. Jekyll and Mr. Hyde* Oct. 29 and 31.

Dramatist plots additions to his queer canon

Keep an eye on hometown gay playwright William "Sam" Gregory. He's already gained notoriety (*Mary Tudor* at CoHo Productions, *Edward II* at Triangle Productions and, most recently, suave-and-sexy verse translation of *Fuente Ovejuna* at Miracle Theatre). Now he's on to even more queer projects, beginning with *Dreams at the Cadogan Hotel*, which received a New Rave staged reading Oct. 2 at Stark Raving Theatre.

"This piece involves the interaction of authors Oscar Wilde, Bram Stoker and George Bernard Shaw, with such fictional characters as Dorian Gray, Dracula and Renfield," says Gregory. "A wide variety of sexuality is brought into play," including homosexuality (Lord Henry Wotton), bisexuality (Wilde), pansexuality (Dracula) and eroto-narcissism (Gray).

Gregory is also busy rewriting *Chateau Joyeux*, a romantic comedy set in a 1947 French vineyard with a subplot about a middle-aged lesbian's coming out and the introduction of her partner to the family business. "It is exciting to me to work on a piece in which an occasion of same-sex love is developed as a natural part of a family dynamic, in a play that celebrates joyful emotional connections of all kinds," he says.

It's a different kind of connection in *The Confessions of Dr. Jekyll and Mr. Hyde*, which Gregory has adapted into a live radio show for Willamette Radio Workshop.

"While there are no queer characters—in the sexual sense—in the piece, since the work deals with social duplicity, addiction and repres-

sion of a passionate nature, it is easy to start seeing parallels between the closet, the ex-gay movement and various sexual hypocrisies," Gregory points out. "A major goal of mine has been to illustrate in an exciting and absorbing way that repression of all kinds leads to horror of all kinds."

Confessions plays 7 p.m. Oct. 29 at White Eagle Saloon, 836 N. Russell St., and 5:30 and 7 p.m. Oct. 31 at Kennedy School, 5736 N.E. 33rd Ave. The all-ages performances are free, and the latter date begins with a family-friendly trick-or-treating party. For details visit www.mcmenamins.com.

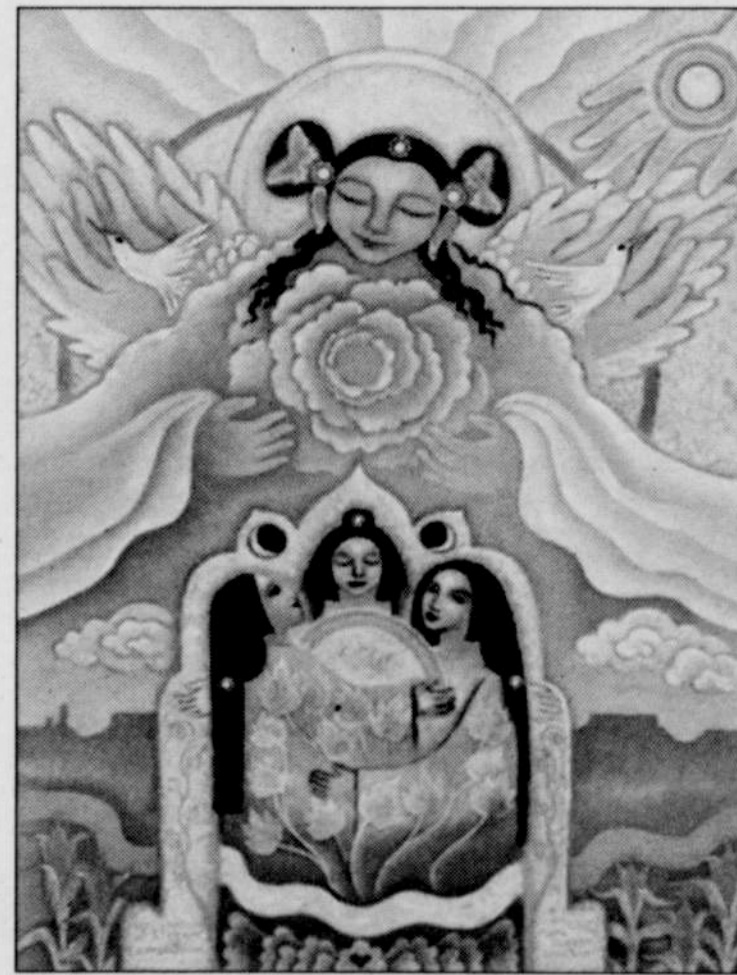
—Timothy Krause

25 years of We'Moon

The 2006 We'Moon calendar, in its varied forms, is being prepared for worldwide distribution of its 25th edition. The publication is part astrological calendar, part venue for the creative energy of graphic and literary female artists—from recognized lesbian artistic and literary luminaries like Tee Corinne, Anndee Hochman and Sierra Lonepine Briano to third-grader Hon Van Swart. The publication

strongly bonds its original astrological base with feminism's Second Wave and the women's land movement.

Founding mother Musawa set the tone for the calendar in 1981. She writes, "Nada, my former partner, and I created the first edition on the kitchen table in front of the fire in an old farmhouse in the Pyrenees." That issue featured "one piece of abstract art we found behind the door, and one photo of a bare-breasted woman juggling oranges that looked like spinning planets."



The 25th edition of the We'Moon calendar is now available.