

NORTHWEST newsbriefs

as Oregon's other out city council member at the beach in Lincoln City. He was sworn in Jan. 10 by Mayor Lori Hollingsworth.

Brisette is no stranger to politics in Lincoln City: He has alternately worked as president of the chamber of commerce, he was chairman of the Democratic central committee in his county, and most recently he worked as a mayoral appointment to the city planning commission. He and his partner, Dan Beck, were elected 2002's "Couple of the Year" by the editorial board of the local paper.

Brisette has lived in Lincoln City for 15



Lincoln City Mayor Lori Hollingsworth swears in City Councilor Rick Brisette

years and has great faith in the people of his community. He notes that he will keep *Just Out* posted about a possible anti-discrimination measure being discussed at City Hall.

POTENTIAL FOR OUTBREAK OF VIRULENT STD HIGH IN PORTLAND AREA

LGV (Lymphogranuloma Venereum) is an aggressive form of a new strain of chlamydia that has been found in gay men in San Francisco. These men have also reported having sex with men from Portland, which has prompted the Multnomah County Health Department to issue a warning about a potential outbreak of the disease.

There may be no initial symptoms, or the only symptom may be a small, painless sore at the exposed site anywhere from three to 30 days after exposure. When symptoms do occur, they may include blood or mucus in the stool and intestinal cramping, or sore lymph nodes in the groin. LGV can lead to scarring of the anus and rectum, severe abdominal infections and death.

If not treated, LGV can become life-threatening or even fatal, especially in men living with HIV. Barebacking, especially with multiple partners, is a major risk factor. The higher your number of partners, the higher your risk, particularly if those partners (or their partners) were from San Francisco, Atlanta, the Netherlands, Belgium, France and Sweden (where the outbreak started).

To protect yourself from LGV, consider taking the following steps:

1. Using condoms when having sex.
2. Getting tested if you have these symptoms: unusual diarrhea, unusual cramping or gas, blood or mucus in stool, unusual constipation. LGV is difficult to diagnose and requires special testing methods.

3. Notifying your partners if you are diagnosed with LGV or another STD.
4. Taking all recommended medicines if diagnosed with LGV or named as a contact. (Treatment is a 21-day course of antibiotics.)

5. Reducing your number of sex partners, especially anonymous partners.

For more information call one of the Multnomah County Health Department's disease intervention specialists at 503-988-3702.

CALLING ALL YOUTH!

The 2005 Oregon Queer Youth Conference is scheduled for Feb. 19 at Catlin Gabel School.

The gathering allows queers and allies from throughout the state to get together and talk about what they are doing, what they want to do and how they can get there. Some of the topics

the conference will cover include making schools safer and communities more accepting. The focus of the conference is youth supporting youth to make things better for everyone.

People younger than 23 who are gay, lesbian, bisexual, transgender, queer or questioning and those who care about them are invited to attend. The conference will focus on high school students younger than 18, with some workshops relevant to older youth and college students.

Organizers will make every effort to accommodate special needs for any youth who wants to attend. Adult allies are welcome to attend and give their support through volunteering, leading youth-empowering workshops and learning to work better with youth.

To register visit www.catlin.edu/oqyc.

STUDY SEEKS QUEER WOMEN AFFECTED BY DOMESTIC VIOLENCE

One in three women will be assaulted by an intimate partner in her lifetime. Over time, abuse gets worse and is more likely to be lethal. Three out of four murdered women are killed by their partners.

Domestic violence affects all women, regardless of age, race, economic status or sexual orientation. About 30 percent of same-sex couples struggle with domestic violence. A variety of personal, social and institutional barriers frequently prevent lesbian, bi and trans women from accessing resources, such as support groups and shelters, that could help them leave abusive partners.

A new study—born out of a collaboration among Oregon Health Sciences University, the Bradley-Angle House, the Sexual Minority Youth Resource Center and the Centers for Disease Control and Prevention—will explore the dynamics of domestic violence within female same-sex relationships. The goal of the study is to improve the sensitivity and effectiveness of domestic violence resources for queer women and to identify factors that put women at risk for repeat violence. Personal information will be kept confidential, and women will be paid \$20 for participating in this focus group.

For more information call Emily Gardner, Bradley-Angle House's sexual and gender minority services coordinator, at 877-897-7741.

PORTLAND ADVICE COLUMNISTS GAIN NATIONAL AUDIENCE

Just Out contributors Kathy Belge and Gina Daggett have launched a new advice column in the national lesbian magazine *Curve*. The sassy butch-femme duo call themselves "Lipstick and Dipstick" and can be found on the Web at LipstickDipstick.com.

Daggett, aka "Lipstick," launched her professional writing career in Portland after graduating cum laude from Pacific University's Creative Writing program and earning her second bachelor's degree. She has worked at Portland's



Dipstick and Lipstick debate the finer points of lesbian relationships

Nervy Girl magazine, which received *Utne Reader's* nod for "Best New Title in 2001." In addition, she has a monthly home and garden column in *The Portland Tribune* and was featured in the inaugural issue of *Portland Monthly* magazine.

Belge, aka "Dipstick," has written as the "lesbian expert" on *About.com*. As her Web site reports, "A stint in journalism school helped her perfect the writing craft, and 10 years as a counselor for queer youth taught her a thing or two about giving advice."

Compiled by SARAH DOUGHER



Sip D' Vine

Come and explore tasty NW wines with us!

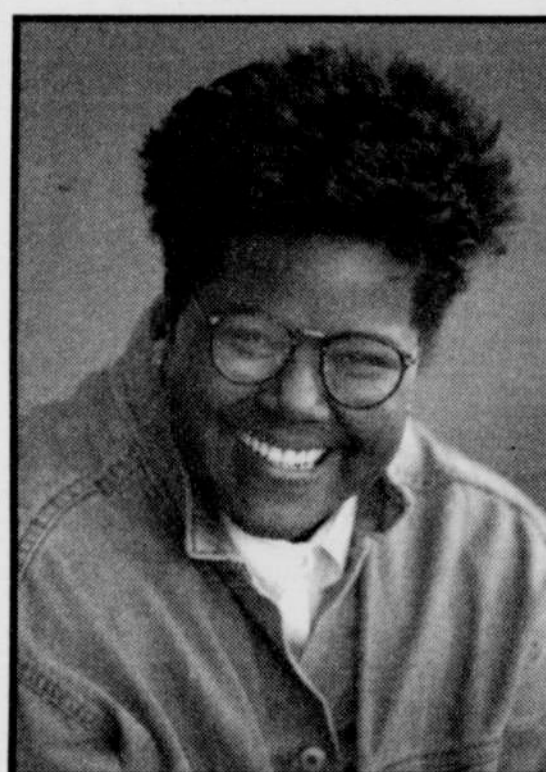
New releases, Unusual Varieties,

Interesting Finds. See our newly

expanded shop! Case Discounts.

Groups, Company Get-Togethers, Parties

www.sipdvine.com * 7829 SW Capitol Hwy * Portland, OR 97219 * 503-977-WINE (9463)



JEWEL A. ROBINSON, ABR

B'ZILLION DOLLAR PRODUCER

Office 503.281.4040

Cell 503.708.9508

Jewel2U@teleport.com

www.jewelrobinson.com



Got financial questions?

Get answers.

- Comprehensive Financial Planning
- Retirement Planning
- Life & Disability Insurance*
- Estate Tax Analysis
- College Savings Plans
- Mutual Funds Investing
- IRAs, Roth IRAs, Rollovers
- Tax Advantaged Investments
- Long Term Care Insurance*

* Offered through arrangements with insurance companies

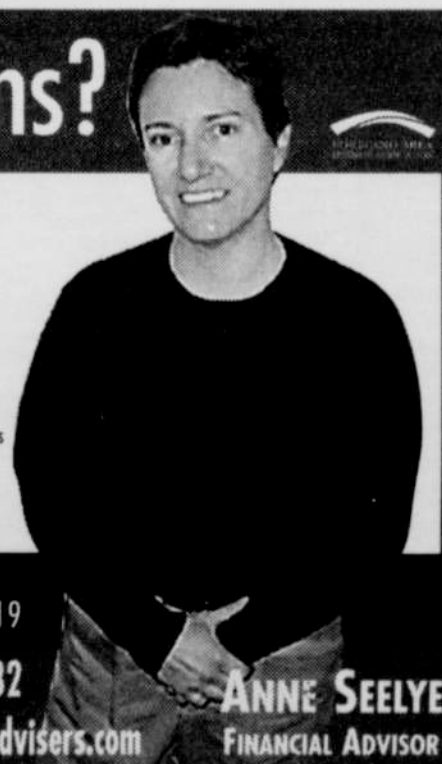


Investing. With a plan.®

Call Anne today. 503.238.6036 ext. 119

500 Northeast Multnomah Street • Suite 278 • Portland, OR 97232

503-238-7056 FAX • Toll Free 888-892-9049 • anneeseelye@wradvisers.com



ANNE SEELYE
FINANCIAL ADVISOR

Thank You

For trusting us
to give our very best
for 52 years!

Ferguson
AUTOBODY

503-232-3600

2454 E. Burnside • Portland, OR 97214

www.fergusonauto.com

Family Owned & Operated Since 1952

Proudly Serving the G/L/B/T Community for 51 Years

- Collision Repair Problems Solved
- Wheel Alignment
- Tires
- Oil Changes
- Break-in Repairs