

Home 4 the Holidays

Columbia Humane Society

2084 Oregon St.
St. Helens, OR 97051
503-397-4353

Columbia Humane Society is a nonprofit, no-kill animal shelter. We have joined the worldwide effort to adopt out 300,000 shelter animals between Nov. 8th & Jan. 2nd. Last year 270,000 animals found homes. Our shelter goal is to adopt out every animal that came to us before Nov. 8th. During the program, mention H4tH and receive 10% off the adoption fees as well as an adoption kit from The Iams Company and other adoption incentives.

Join us Dec. 4th & 5th for a special adopt-a-thon

at the St. Helens Hi-School Pharmacy on Hwy. 30.
Sat. 10am - 4pm & Sun. 11am - 4pm.

Cats & dogs will be available for adoption.

We'll have holiday gifts for sale
and food by Wayne's Chicago Red Hots available.

Santa & Blitzen will visit with the kids.

"The Ditty Twisters" from Portland will perform on Saturday.
On Sunday, Portland's "Hypercube" will perform.

For more information, call the shelter at 503-397-4353.



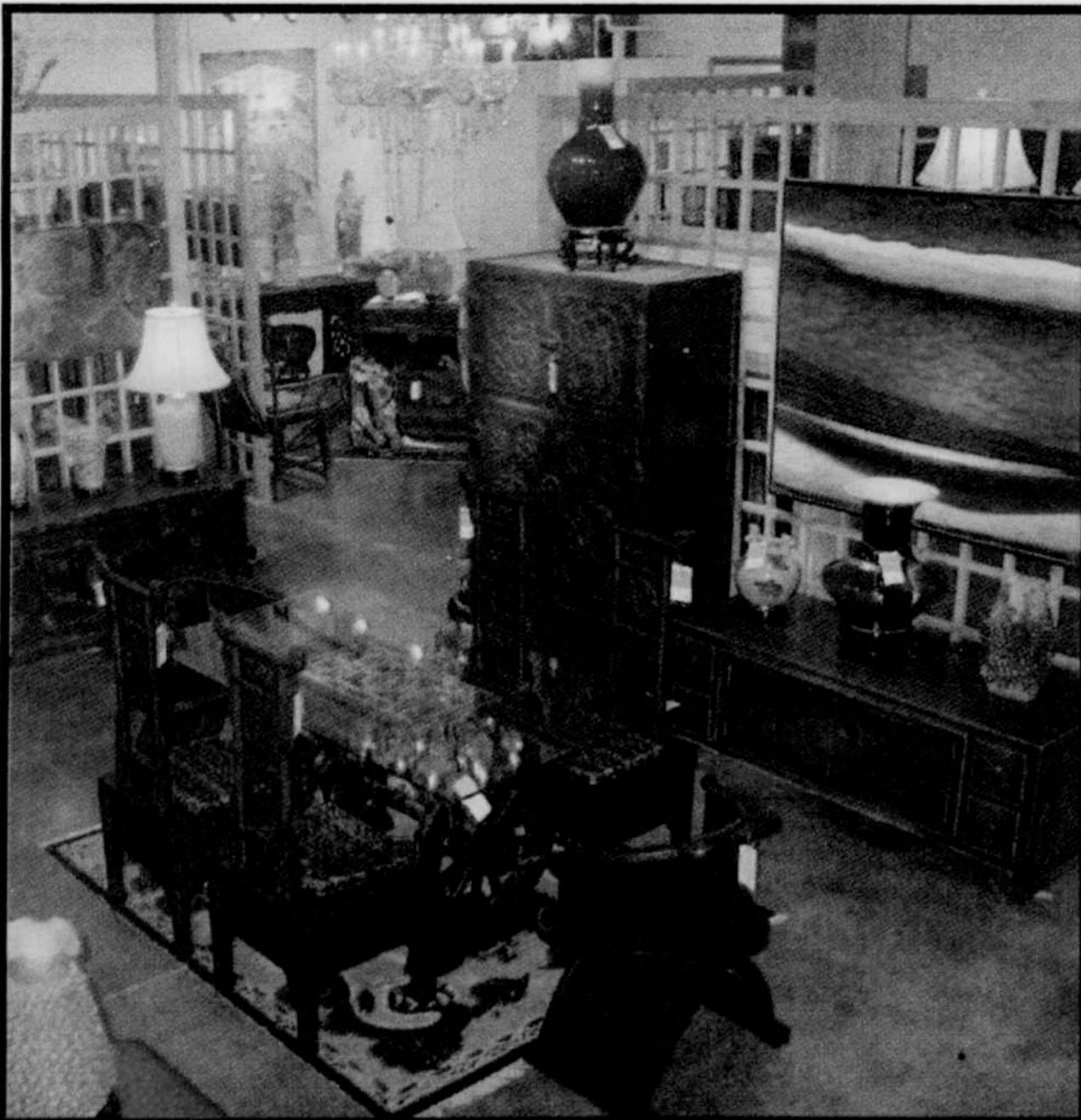
CARDS • GIFTS • NOVELTIES

www.thejellybean.com

Downtown
721 SE 10th Ave
Portland, OR 97025
503.222.5888

Hawthorne District
3534 SE Hawthorne Blvd
Portland, OR 97214
503.239.9205

1.800.823.9081



LOTUS ANTIQUES AND ARTS

Pearl District | 938 NW Everett Ave
503-417-1888 | www.lotusantiques.com

BUY 2 GLASS EYE HOLIDAY ORNAMENTS
GET 1 FREE!

MADE WITH MOUNT ST. HELENS' ASH!
OFFER GOOD 11.26.04 THRU 12.31.04

The Real Mother Goose

Fine American Craft

WASHINGTON SQUARE 503.620.2243
DOWNTOWN PORTLAND 901 SW YAMHILL • 503.223.9510
PORTLAND AIRPORT 503.284.9929

WWW.THEREALMOTHERGOOSE.COM

A: THE TEAM THAT IS GOING TO KICK THE MERCURY'S ASS.

Q: WHO IS just out?

And hey, if we lose, you get to see us in our skivvies!

The Just Out editorial team takes on The Portland Mercury staff during



10:30 p.m. Dec. 9 at No Fish! Go Fish!
3962 S.E. Hawthorne Blvd.