

outreach

HEALTH

Metro: Anti-violence

Bradley-Angle House provides emergency shelter for woman-identified domestic violence survivors and a support group for women battered by women. Also provides individual support and advocacy for queer youth of all genders who have experienced emotional, physical or sexual abuse. Free, confidential and safe. (Kamron kamrong@bradleyangle.org.) (7/04)

Clackamas Women's Services offers shelter, support and resource referral to survivors of domestic and sexual violence. Lesbian, bi and trans friendly. Wheelchair accessible. TTD, relay calls and collect calls accepted. (Office: 503-722-2366. Crisis Line: 503-654-2288.) (7/04)

Portland Women's Crisis Line operates a 24-hour crisis intervention hotline for survivors of domestic and sexual violence and provides information and referrals for shelter, counseling, support groups and community education. Foreign language translation available. (503-235-5333 or 888-235-5333. www.unitedway-pdx.org/family/pdxwomen.html.) (7/04)

Stop Abuse for Everyone (SAFE) provides resources for sexual minorities who fall through the cracks of traditional domestic violence services. (PO Box 951, Tualatin, OR 97062. www.safe4all.org.) (7/04)

Metro: Health

Portland GLBTQ Yoga Alliance, a group of teachers from various traditions and studios, helps sexual minority and HIV-positive people find yoga classes that are specifically welcoming and/or experienced in addressing their special needs. (www.yogagopartland.com. bart@stonewallschool.org.) (7/04)

Queer Love Action Network and Directory (Q-LAND), a HIV/STD prevention and wellness activist organization, meets at Ainsworth United Church of Christ to plan how to encourage queer men to get their needs for fun, health and intimacy met in life-affirming ways. (7-9 pm first and third Tuesday, 2941 NE Ainsworth St. 503-281-2076. bart@stonewallschool.org. www.qland.org.) (7/04)

Metro: Mental Health

Portland GLBT Support Group helps people dealing with mental health issues such as depression, anxiety and post-traumatic stress disorder. Lightly structured activities, group chats and e-mail offer a safe environment. (Jerry 503-666-8059. portlandglbtsupport@yahoo.com.) (7/04)

YWCA of Greater Portland Counseling Center offers sliding fee scale counseling for individuals, couples and groups in a safe, confidential and supportive environment. Also offers a Sexual Minorities Women

Support Group on Thursdays and an FIM Trauma Survivor Support Group on Wednesdays. (1111 SW 10th Ave. 503-294-7440.) (7/04)

Metro: Recovery

Extended Family hosts queer-friendly Alcoholics Anonymous meetings at Metropolitan Community Church of Portland. (5:30 pm daily. 2400 NE Broadway.) (7/04)

Lunch Bunch hosts queer-friendly Alcoholics Anonymous meetings at Metropolitan Community Church of Portland. (Noon daily, 1 pm Sunday. 2400 NE Broadway.) (7/04)

Live and Let Live Club hosts daily 12-step meetings and monthly clean-and-sober activities for the queer recovery community. (2940A SE Belmont St. 503-238-6091.) (7/04)

Rainbow Recovery is an Al-Anon group with a queer focus for those seeking to recover from the effects of someone else's drinking. Meets weekly at Bethlehem Lutheran Church. (6 pm Thursday. 1244 NE 39th Ave.) (7/04)

Sex Addicts Anonymous is a 12-step program for those suffering from addictive sexual behaviors. Any gender and sexual orientation is welcome. (503-452-5961. www.portlandsaa.org.) (7/04)

Metro: Sexual

The **Multnomah County Health Department STD Program** offers testing and treatment for sexually transmitted diseases, HIV testing and hepatitis A and B vaccinations. By appointment or walk-in. Most insurance plans accepted; sliding-scale fee. Se habla español. (9 am-5 pm Monday-Friday except 1-5 pm Wednesday. Sixth Floor, 426 SW Stark St. 503-988-3700.) (7/04)

Willamette Valley: Health

Womenspace provides a confidential shelter for women and children who have been abused physically, sexually or emotionally; a 24-hour hot line; and a drop-in advocacy center for any victim of domestic violence. Spanish speaking available. Hosts to a lesbian and bi women's support group. (Crisis: 800-281-2800. Business: 541-485-8232.) (7/04)

Willamette Valley: Recovery

Eugene Sex Addicts Anonymous is a 12-step fellowship for those who are suffering from addictive sexual behaviors. Sexual orientation is not an issue. (541-342-5582. www.eugeneseaa.org.) (7/04)

(503-701-7922. casflyers@yahoo.com. www.geocities.com/casflyers.) (7/04)

Coqsure is a social group for people who were assigned a female sex at birth but identify otherwise (female-to-male, genderqueer, drag king, etc.). First Sunday meetings are open to partners and families of any configuration. (503-471-1515. groups.yahoo.com/group/coqsure.) (7/04)

Dyke Night Portland takes over a bar every other Saturday night and a coffeehouse every other Sunday afternoon. Sign up on the e-mail list at www.technodyke.com/dykenight. (dykenightportland@yahoo.com.) (7/04)

50+ lesbian social group for women meets on the third Saturday of the month. (4-7 pm. 503-642-3360 or 503-286-3575.) (7/04)

Film Fatales, for single lesbians 35 and older who enjoy watching movies. (Fourth Saturday, 503-774-6116.) (7/04)

Funny Ladies Tea and Posey Society is a social group for lesbians 35 and older. They meet for a potluck on the second Saturday of each month. E-mail newsletter is free on request. (fataps@aol.com.) (7/04)

Gay Meditation Group is a casual, nonreligious group for gay and bi men to meet, meditate together and socialize. (7:30 pm Tuesdays. Dean Sidwell 503-997-6319.) (7/04)

Gay Men's Writers' Group is for fiction and nonfiction writers who create for publication or for pleasure. (Howard 503-235-7018. rgardens@easystreet.com.)

Imperial Sovereign Rose Court of Oregon is the oldest gay, lesbian, bi and trans social/fund-raising organization in the state of Oregon. Meetings are the first two Mondays of each month. (www.rosecourt.org.) (7/04)

Jewish Gay Men's Group—call for meeting time and place. (503-246-5939. efrainlevi@aol.com.) (7/04)

Leather Night and Red Henky Social are the first and third Friday of each month at Gal's Dirty Duck Tavern. (9 pm-midnight. 439 NW Third Ave. 503-224-8446. dustin@pacifier.com.) (7/04)

A peer-facilitated **Lesbian Discussion & Social Group** for women of any age meets first and third Wednesdays to talk about changing topics. (6:30-8 pm. 800 NW Sixth Ave. #253. 503-227-0606. rightonlesbos@yahoo.com.) (7/04)

The **Lesbian Garden Club** is a group of women who love gardens and gardening. They exchange plants, seeds, advice and encouragement while having a good time. Call or e-mail for a copy of the newsletter and information about upcoming events. (Kathe 503-909-2002. lgc@spintone.com.) (7/04)

Lesbian Naturalist Network forming for women seriously interested in the natural history of birds, plants and animals to go out birding, botanizing, tracking, etc. and to explore the meaning of what we see. (Beth 503-226-7919.) (7/04)

Lesbians Enjoying Nature and Science (LENS) is a fun-loving group of women who enjoy exploring all aspects of the environment. Activities include bird watching, nature walks, archaeology, camping, kayaking, star gazing and an occasional "lecture." No experience necessary. (6:45-8:30 pm second Thursday planning meeting. Ann Richmond 503-287-7124.) (7/04)

Lulu's Perry Playhouse is a social group for self-identifying women who are into S/M. Play parties are held on the second Saturday of the month. (503-231-3992. lululists@excite.com. www.spiretech.com/~awntie/lulu.htm.) (7/04)

Men Over 40 is a small social group that meets alternate Thursday evenings. (503-246-5795.) (7/04)

Northwest Gender Alliance is a social and support organization for cross-dressers and transsexuals. Monthly open meetings and socials. (PO Box 4928, Portland, OR 97208. 503-646-2802. www.nwgpdx.org.) (7/04)

Oregon Men Enjoying Naturism is a social organization for gay male naturists/nudists. Potluck social third Sunday of every month. (omenpdx@yahoo.com. www.geocities.com/omenpdx.) (7/04)

Oregon Regional Gay and Naked (ORGAN) is a social club for gay men who enjoy being nude. Monthly potlucks and events. Guests are invited to attend two events before deciding on membership. (PO Box 3152, Portland, OR 97293-3152. organ_info@organ-pdx.org. www.organ-pdx.org.) (7/04)

PDX Women Riders share a love of motorcycling. All women, bike types and skill levels welcome. Let's all get out and ride together! (viragovyrn@yahoo.com. groups.yahoo.com/group/pdxwomenriders.) (7/04)

PDX Gourmet Chicks invites women over 30 meet for movies, dinners, games, camping, etc. (http://groups.msn.com/pdxgourmetchicks.) (7/04)

A gay **Pinocle Group** invites others to play cards Sundays at Hobo's. (6 pm. 120 NW Third Ave. Mike 503-203-8426.) (7/04)

Portland Bisexual Women is a support and discussion group for bi and questioning women. Women of any age, race, ability or cultural origin are encouraged to attend. Topic discussion meetings second and fourth Fridays. (portlandbiwomen@comcast.net.) (7/04)

Portland Leather Men meet every second Saturday for potluck and socializing. Meet men into a leather lifestyle and keep abreast of leather happenings. No dues, no formal organization, no officers or board, just leather socialization for the past 20 years. (360-896-6665. pim@directway.com.) (7/04)

Portland Metro Prime Timers is a social group for mature gay men and those who appreciate them, coming together for social, educational and cultural purposes. (PO Box 5884, Portland, OR 97228. 503-286-4613 or 360-254-1718. pdxprimetimers@yahoo.com. www.geocities.com/pdxprimetimers.) (7/04)

Portland State University Queers and Allies offers educational and social programming to queer and nonqueer community on campus and beyond. Also helps with support and referral services for people of all orientations. Non-PSU students are welcome to attend activities and meetings. (441A Smith Memorial Center, 1825 SW Broadway. 503-725-5681. queersandalles@mail.pdx.edu. www.queersandalles.pdx.edu.) (7/04)

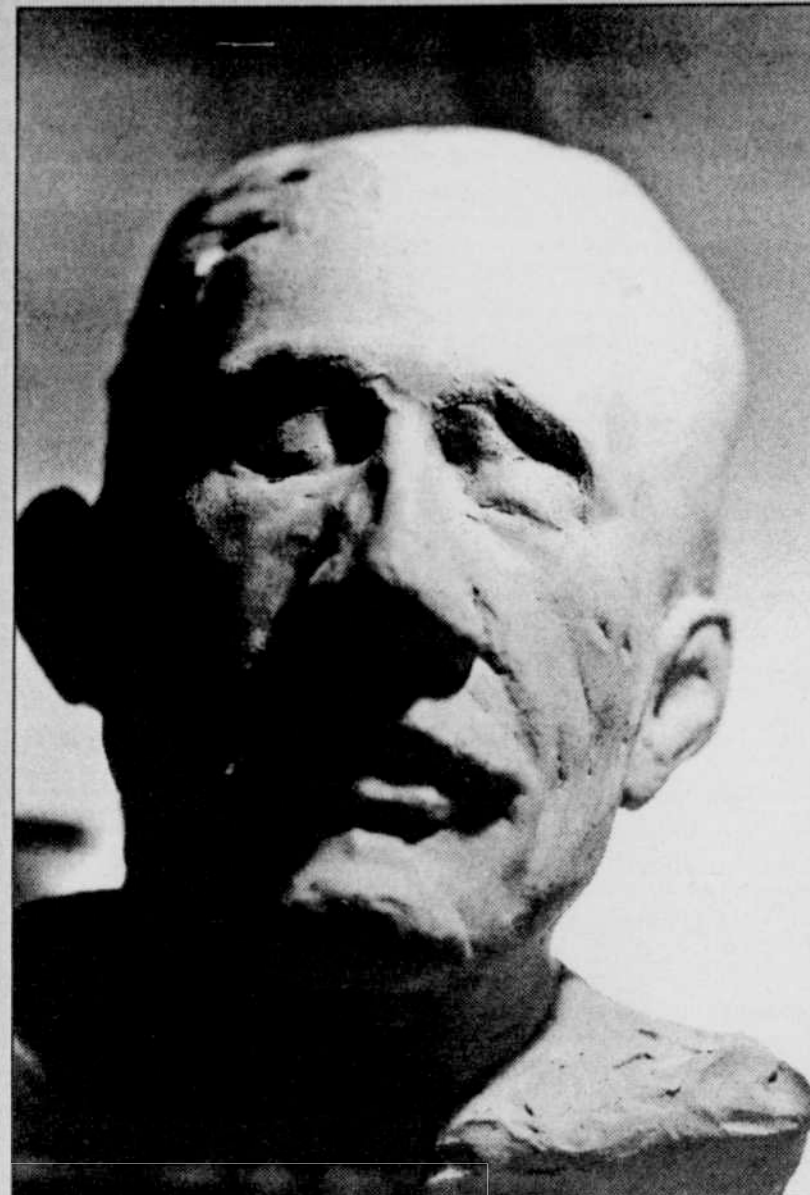
Rose City Discussion Club, the largest open pansexual/alternative sexuality club in the Northwest, is open to all orientations, fetishes and lifestyles that are safe, sane and consensual. Monthly meetings, workshops and newsletter. (503-972-1869. rcdc@teleport.com. www.rcdc.org.) (7/04)

Boysboys is a fun, social gathering for gay and bi men who are interested in a healthy vegetarian or vegan lifestyle. A variety of activities and monthly potlucks on the last Friday. (veggieguys@aol.com.) (7/04)

What Am I Doing Here is a social group for lesbians ages 40 to 55. (pennyjit@thefreesite.com. www.whatamidoinghere.no-frills.net.) (7/04)

Women of the Rivers, the Portland/Vancouver chapter of Women on Wheels, is a motorcycle club for all women who like to ride. We meet monthly at Jubitz, sponsor riding clinics and take day trips. (5 pm second Sunday. 10310 N Vancouver Way. www.hevanet.com/chama/wow.) (7/04)

Women Who Cook and Recipe Exchange holds a potluck the first Saturday of every month for women who love to cook, eat, meet new friends and share great food. (503-356-9552. jw@pccz.com.) (7/04)



Renowned sculptor and painter Benjamin A. Clark is inspired by queer through March 26

503-231-5135. pattyfrench57@hotmail.com.) (7/04)

Team Tennis meets Sundays at University of Portland. All levels of play welcome. First time is free. (8:30 am-noon. 503-735-9058 or 503-282-7210. rayscottwa@yahoo.com.) (7/04)

Central Oregon: Social

Social group for **gay and bi men** in central Oregon. Monthly dinners, annual barbecue and holiday parties. (541-312-8881.) (7/04)

Lesbian Network of Central Oregon welcomes all lesbian, bi and trans women for monthly activities, including potlucks, dances and drumming circles. (541-317-8457.) (7/04)

Lesbigay Gorge meets the second Monday of every month at United Church of Christ in The Dalles. Visitors to the area welcome. (7:30-8:30 pm. 111 E Fifth St. 541-298-3879 or 541-506-2951. lesbigaygorge@charter.net.) (7/04)

Southern Oregon: Social

Abdill-Ellis Lambda Community Center plays host to social events and groups. Call for schedule. (717 Siskiyou Blvd., Ashland. Mailing address: PO Box 927, Ashland, OR 97520. 541-488-6990. www.abdellis.org.) (7/04)

Gay Men's Movie Night is every second Friday at the Douglas County HIV Resource Center in Roseburg. (6:30 pm dessert potluck, 7 pm movie. 832 Highland St. 541-440-2761.) (7/04)

Metro: Physical Recreation

Adventure Group, Portland's gay and lesbian outdoors group, organizes a variety of activities year round, including hiking, walking, museum and garden tours, cross-country and downhill skiing, rafting and mountain biking. (PO Box 2201, Portland, OR 97208-2201. 503-452-5680. www.adventuregroup.org.) (7/04)

Amazon Dragons is a lesbian-focused competitive dragon boat racing club. Recruiting new members in 2004. Work hard, meet new people, and have fun. (Eileen 503-762-4742. www.amazondragons.org.) (7/04)

Forest Group outings are cooperative adventures for women. Participants are responsible for providing their own equipment and choosing outings appropriate for their skill and fitness level. All skill levels welcome. (Dawn and Tami 503-659-2782. ncc1127@hotmail.com. www.geocities.com/ncc1127/forestpdx.) (7/04)

The **Gay Women's Golf Group** welcomes all levels of players. (www.turfgirlz.com.) (7/04)

Lesbian Equestrian Group gets together for equestrian activities in the Pacific Northwest. (Denise 503-654-3865. Lynn 503-777-2339. ketrav@drop.com.) (7/04)

Out Dancing teaches dancing for same-sex couples at Ankeny Street Studio. Classes for different dance styles start the first Friday of each month. Also a monthly dance social. (503-236-5129. out_dancing@yahoo.com.) (7/04)

Outkayaking Northwest is Portland's gay and lesbian sea kayak group exploring nearby lakes, rivers and bays. (outkayakingnw@yahoo.com.) (7/04)

Pacific Coast Yacht Club welcomes gay and lesbian sailboat and powerboat owners to cruise the Willamette River, Columbia River and Multnomah Channel. Promotes good fellowship and safe boating. (503-345-8523. pccyclub@earthlink.net.) (7/04)

Portland Gay and Lesbian Bowling Association is in its 26th season! Meets Sundays at Hollywood Lanes. Drop-ins welcome anytime. (3:30 pm. 4030 NE Halsey St. Mailing address: PO Box 80002, Portland, OR 97208-1002. 503-722-0438. bowlpdx@aol.com. www.pdxbowling.com.) (7/04)

Whether you're a running novice or a seasoned marathoner, **Portland Frontrunners** welcome gay, lesbian, bi and trans people of all abilities and interests. (Gary info@portlandfrontrunners.org. www.portlandfrontrunners.org.) (7/04)

Portland Upstream is a swim team for the gay and lesbian community that offers coached workouts for all levels. Come swim with the Pups and improve your health and techniques. Practices are noon Sundays at Columbia Pool. (7701 N Chataqua Blvd. swimupdx@yahoo.com. www.geocities.com/swimpdx.) (7/04)

Rose City Softball Association is an adult softball league for the gay, lesbian, bi and trans community. We offer an open division (co-ed) and a women's division. We are affiliated with the North American Gay Amateur Athletic Alliance. (503-552-4769. www.portlandgayssoftball.com. www.nagaa.org.) (7/04)

Rosetown Ramblers, Portland's gay and lesbian square dance club, dances at mainstream and plus levels. (PO Box 5352, Portland, OR 97228-5352. www.rosetownramblers.com.) (7/04)

RoundsAbout Portland offers social dancing classes, including cued waltz and two-step in rounds. Singles and couples welcome. (Patty 503-234-7868. Bob

SOCIAL

Metro: Arts & Music

Bridges Vocal Ensemble seeks to empower and inspire the gay, lesbian and bisexual community while building bridges and promoting understanding with the greater public. Honors and strives for diversity in its members, music and audiences. (503-233-9554. bridgesvocalensemble@yahoo.com. community.orgonline.com/cc/bridges.) (7/04)

Portland Gay Men's Chorus is open to singers, support members and volunteers. (503-226-2588. www.pdxgmc.org.) (7/04)

Portland Lesbian Choir is a nonauditioned community choir that welcomes singers, supportive members and volunteers. (portlandlesbianchoir@hotmail.com. www.pichoer.org.) (7/04)

Real Connection is a social gathering for gay men who are artists, writers or musicians or who pursue some creative activity. Monthly potlucks on the second Friday. (Carl 503-284-2971.) (7/04)

Rose City Gay Freedom Band provides an artistic outlet to queers and supportive friends of varying musical skill levels. Performs a variety of styles from classical to contemporary in annual and special event concerts. (503-790-2170. info@rcgfb.org. www.rcgfb.org.) (7/04)

Metro: General

Aelan & Pacific Islander Lesbians and Gays is a nonprofit community voice for gay, lesbian and bi Aelan and Pacific Islanders. Activities include potlucks, recreational outings and cultural events. Friendly environment to meet and connect with other API. (PO Box 12661, Portland, OR 97232. apig_pdx@yahoo.com.) (7/04)

Bad Girls is a social and educational leather and B/D/S/M club for self-identified women with an emphasis on safety and education. Workshops, discussions, events and parties. Women of all orientations and preferences can connect and ask questions during the **Monthly Women's Welcoming Month** at 7 pm every second Tuesday. (503-972-2233. www.pdxbadgirls.net.) (7/04)

Cascade Flyers are gay, lesbian and bi aviators, both private and professional, in Washington, Oregon and southern British Columbia. Dinner meetings in Portland area.