

outreach

HEALTH

Metro: Anti-violence

Bradley-Angle House provides emergency shelter for woman-identified domestic violence survivors and a support group for women battered by women. Also provides individual support and advocacy for queer youth of all genders who have experienced emotional, physical or sexual abuse. Free, confidential and safe. (Francie 503-232-7805.) (7/03)

Clackamas Women's Services offers shelter, support and resource referral to survivors of domestic and sexual violence. Lesbian, bi and trans friendly. Wheelchair accessible. TTD, relay calls and collect calls accepted. (Office: 503-722-2366. Crisis Line: 503-654-2288.) (7/03)

Family Center Outreach Office, a program of Volunteers of America located in Southeast Portland, offers support groups and drop-in services to women and children who are survivors of domestic violence. (Samantha 503-771-5503.) (7/03)

Portland Women's Crisis Line offers services for victims/survivors of domestic violence and sexual assault. 24-hour crisis hotline with interpretation services for non-English speakers. Advocacy for those filing restraining orders in Multnomah County. Support groups for victims/survivors of violence, rape/sexual assault and adult survivors of childhood sexual abuse. All services are free and confidential. (503-235-5333 or 888-235-5333.) (7/03)

SAFE (Stop Abuse for Everyone) provides resources for sexual minorities who fall through the cracks of traditional domestic violence services. (PO Box 951, Tualatin, OR 97062. www.safe4all.org.) (7/04)

Metro: Mental Health

Meaningful Journeys is a support/therapy group for trans women looking for connection and community. Facilitated by Beth Richman, LCSW. (503-754-6145. bethrichman@word.oberlin.edu.) (7/03)

Support group for gay men led by experienced gay therapist William Douglas, M.A. Peaceful, rustic setting. (503-292-1069. landoug@aol.com.) (7/03)

SOCIAL

Metro: Arts & Music

Bridges Vocal Ensemble seeks to empower and inspire the gay, lesbian and bisexual community while building bridges and promoting understanding with the greater public. Honors and strives for diversity in its members, music and audiences. (503-242-1675. bridgesvocalensemble@yahoo.com. http://community.oregonlive.com/cc/bridges.) (7/03)

Gay Men's Drawing Group seeks those who like to draw or model. Meets every second and fourth Thursday of the month. (Philp 503-287-7447.) (7/03)

Portland Gay Men's Chorus is open to singers, support members and volunteers. Seeking an individual to fill the role of Music Librarian. (503-226-2588. www.pdgmco.org.) (7/03)

Portland Lesbian Choir is a nonaudition community choir that welcomes singers, supportive members and volunteers. (www.pwchoir.org or portlandlesbianchoir@hotmail.com.) (7/03)

Real Connection is a social gathering for gay men who are artists, writers or musicians or who pursue some creative activity. Monthly potlucks on the second Friday. (Carl 503-284-2971.) (7/03)

The **Rose City Gay Freedom Band** provides an artistic outlet to all gay people and supportive friends of varying musical skill levels. Performs a variety of styles from classical to contemporary in annual and special event concerts. (503-790-2170. info@rcgfb.org. www.rcgfb.org.) (7/03)

Metro: General

Asian & Pacific Islander Lesbians and Gays is a nonprofit community voice for gay, lesbian and bi Asian and Pacific Islander Oregonians. Activities include potlucks, recreational outings, retreats, cultural events and workshops. Safe environment to meet and connect with other Asians and Pacific Islanders. (PO Box 12661, Portland, OR 97232. apig_pdx@yahoo.com.) (7/03)

Bad Girls is a social and educational organization with an emphasis on safe, sane and consensual BDSM among self-identified women. Workshops, discussions and social events. Women of all orientations and preferences can connect and ask questions during the **Kinky Women's Welcoming Munch** at 7 pm every second Tuesday. (PO Box 17254, Portland, OR 97217-0254. 503-972-2233. contact@pdxbadgirls.net.) (7/03)

Binet Oregon is a statewide organization that encourages networking within the bisexual community as well as among others in the sexual minorities community. We play host to numerous social events, monthly munches and an annual gathering. (503-622-1178. www.binet.org.) (7/03)

Bisexual Community Forum is an age- and gender-inclusive social, support and education network. Activities include dances, potlucks, field trips and a

YWCA of Greater Portland Counseling Center offers sliding fee scale counseling for individuals, couples and groups in a safe, confidential and supportive environment. Also offers a Lesbian Support Group on Thursday evenings. (17 SW Second Ave. 503-294-7440.) (7/03)

Metro: Recovery

Lunch Bunch plays host to Alcoholics Anonymous meetings for gay men and lesbians but is open to everyone. (Noon daily, 1 pm Sunday. Metropolitan Community Church of Portland, 2400 NE Broadway.) (7/03)

Sex Addicts Anonymous is a 12-step program for those suffering from addictive sexual behaviors. Any gender and sexual orientation is welcome. (503-452-5961. www.portlandsaa.org.) (7/03)

Metro: Sexual

The **Multnomah County Health Department STD Program** offers testing and treatment for sexually transmitted diseases, HIV testing and hepatitis A and B vaccinations. By appointment or on a first-come, first-served walk-in basis. Most insurance plans accepted; sliding-scale fee. Se habla español. (9 am-5 pm Monday-Friday except 1-5 pm Wednesday. Sixth Floor, 426 SW Stark St. 503-988-3700.) (7/03)

Willamette Valley: Health

Womenspace provides a 24-hour hot line and shelter for women, men and children who have been abused physically, sexually or emotionally. Spanish speaking available. Plays host to a lesbian and bi women's support group. (Crisis: 800-281-2800. Business: 541-485-8232.) (7/03)

Willamette Valley: Recovery

Eugene SAA is a 12-step fellowship for those who are suffering from addictive sexual behaviors. Sexual orientation is not an issue. (541-342-5582. www.eugenessaa.com.) (7/03)

polyamory interest group. Meetings are every first Monday. (7:30 pm. 3 Friends Coffeehouse, 201 SE 12th Ave. Laury 503-285-4848.) (7/03)

Cascade Flyers are gay, lesbian and bi aviators, both private and professional, in Washington, Oregon and southern British Columbia. Dinner meetings in Portland area. (503-228-6675. casflyers@yahoo.com. www.geocities.com/casflyers.) (7/03)

COQSURE is a social group for people who were born or raised female but who don't identify as totally female. This includes people born female or intersexed and who are unsure of their gender or who are considering changing identity, guys who are exploring possibilities for inner/outer gender, those who are not transitioning but identify always or sometimes as guys, as well as guys who are transitioning or have transitioned. We welcome significant others and members of all sexual orientations. Monthly social. (503-471-1515.) (7/03)

Dyke Night Portland takes over a bar every other Saturday night and a coffeehouse every other Sunday afternoon. Sign up on the e-mail list at www.techodyke.com/dykenight. (dykenightportland@yahoo.com.) (7/03)

50+ lesbian social group for women meets on the third Saturday of the month. (4-7 pm. 503-642-3360 or 503-286-3575.) (7/03)

Friends is a weekly support and discussion group for African American gay and bi men. (5-7 pm Wednesday. Brian 503-287-8651.) (7/03)

Funny Ladies Tea and Posy Society is a social group for lesbians 35 and older. They meet for a potluck on the second Saturday of each month. E-mail newsletter is free on request. (503-760-0816. flataps@aol.com.) (7/03)

Imperial Sovereign Rose Court of Oregon is the oldest gay, lesbian, bi and trans social/fund-raising organization in the state of Oregon. Meetings are the first two Mondays of each month. (www.poissonwaters.com or www.rosecourt.org.) (7/03)

Jewish Gay Men's Group—call for meeting time and place. (503-246-5939. efrainetv@aol.com.) (7/03)

Leather Night and Red Henky Social is the first and third Friday of each month at Gail's Dirty Duck. (9 pm-midnight. 439 NW Third Ave. 503-224-8446. pdxsaltypd@aol.com.) (7/03)

A peer-facilitated **Lesbian Discussion & Social Group** for women of any age meets first and third Wednesdays to talk about changing topics. (6:30-8 pm. 800 NW Sixth Ave. #253. 503-227-0605. nightlesbos@yahoo.com.) (7/03)

Lesbian Naturalist Network forming for women seriously interested in the natural history of birds, plants and animals to go out birding, botanizing, tracking, etc. and to explore the meaning of what we see. (Beth 503-226-7919.) (7/03)

Lesbians Enjoying Nature and Science (LENS) is a fun-loving group of women who enjoy exploring all aspects of the environment. Activities include bird

watching, nature walks, archaeology, camping, kayaking, star gazing and an occasional "lecture." No experience necessary. (6:45-8:30 pm second Thursday planning meeting. 503-617-1989 or lois_k_cunningham@uhc.com.) (7/03)

Lulu's Pervy Playhouse is a social group for self-identifying women who are into S/M. Play parties are held on the second Saturday of the month. (503-231-3992. lululist@excite.com. www.spiretech.com/~awntie/lulu.htm.) (7/03)

Men's FilmTalk meets regularly to discuss films. (filmtalk@aracnet.com.) (7/03)

Mom2Mom is an alcohol-free social group for families (including dads). Have fun and make connections and friendships with other great families! (Flora 503-284-0216 or Jaqueline 503-282-0565.) (7/03)

Northwest Gender Alliance is a social and support organization for cross-dressers and transsexuals. Monthly open meetings and socials. (PO Box 4928, Portland, OR 97208. 503-646-2802. www.nwgpdx.org.) (7/03)

ORGAN (Oregon Regional Gay and Naked) is a social club for gay men who enjoy being nude. Monthly potlucks and events. Guests are invited to attend two events before deciding on membership. (PO Box 3152, Portland, OR 97293-3152. organ_info@organ-pdx.org. www.organ-pdx.org.) (7/03)

ORGAN (Oregon Regional Gay and Naked) is a social organization in which gay male naturists/nudists may enjoy the camaraderie of like-minded gay men in a safe, wholesome environment. Potluck social third Sunday of every month. (omerpdx@yahoo.com. www.geocities.com/omerpdx.) (7/03)

ORGAN (Oregon Regional Gay and Naked) is a social club for gay men who enjoy being nude. Monthly potlucks and events. Guests are invited to attend two events before deciding on membership. (PO Box 3152, Portland, OR 97293-3152. organ_info@organ-pdx.org. www.organ-pdx.org.) (7/03)

A gay **Pinochle Group** invites others to play cards Sundays at Hobo's. (6 pm. 120 NW Third Ave. Mike 503-203-8426.) (7/03)

Portland Bisexual Alliance sponsors social and political events for bi and bi-friendly people and organizes the Portland Bi Day rally. (503-775-9717. pba@portland.org. www.bportland.org.) (7/03)

Portland Bisexual Women is a support and discussion group for bi and questioning women. Women of any age, race, ability or cultural origin are encouraged to attend. Topic discussion meetings second and fourth Friday of every month. (503-283-6433. portlandbisexual@aol.com.) (7/03)

Portland Leather Alliance is a pansexual, nonprofit organization dedicated to fostering a positive community for safe, sane and consensual alternative adult sexualities in general and S/M/leather/fetish in particular. (503-727-3148. www.pd LeatherAlliance.org.) (7/03)

Portland Leather Men meet every second Saturday for potluck and socializing. Meet men into a leather lifestyle and keep abreast of leather happenings. No dues, no formal organization, no officers or board, just leather socialization for the past 15 years. (360-896-6665. furry@aracnet.com.) (7/03)

Portland Metro Prime Timers is a social group for mature gay men and those who appreciate them, coming together for social, educational and cultural purposes. (PO Box 5884, Portland, OR 97228. 503-286-4613 or 360-254-1718. pdxprimetimers@yahoo.com. www.geocities.com/pdxprimetimers.) (7/03)

Portland State University Queers and Allies offers educational and social programming and support and referral services for people of all orientations. Tackles issues pertinent to the queer community on campus and beyond. Non-PSU students also welcome to attend activities and meetings. (441A Smith Memorial Center, 1825 SW Broadway, Portland, OR 97201. 503-725-5681. queersandalles@mail.pdx.edu. www.queersandalles.pdx.edu.) (7/03)

Rose City Discussion Club, the largest open pansexual/alternative sexuality club in the Northwest, is open to all orientations, fetishes and lifestyles that are safe, sane and consensual. Monthly meetings, workshops and newsletters. (503-972-1869. rcdc@teleport.com. www.rcdc.org.) (7/03)

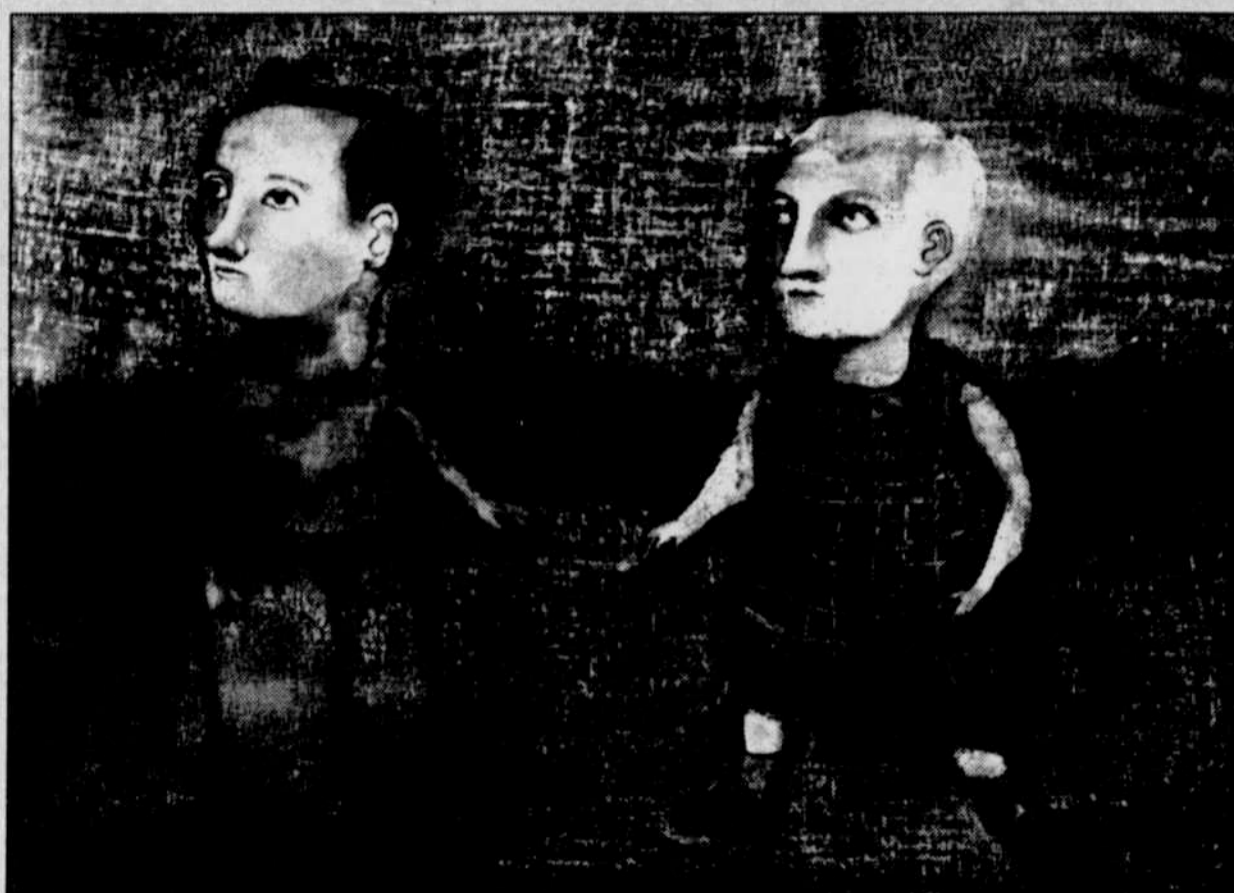
Together Works, a confidential group for lesbians, gays, bisexuals and friends, meets for social and discussions of topics of mutual interest. Meets second and fourth Mondays. (7:30 pm May-September, 7 pm October-April. First Baptist Church, 125 SE Cows St. McMinnville. Don 503-434-6266.) (7/03)

Urban Upstarts is an activity and social club for professional gay men between their late 20s and early 40s. Portland has more to offer than clubs, and we can prove it. (PO Box 2372, Portland, OR 97217. 503-285-1414. info@pdxgaynet.com. www.pdxgaynet.com.) (7/03)

Young Men's Coffee Talk is every Wednesday at 3 Friends Coffeehouse. (7-9 pm. 201 SE 12th Ave.) (7/03)

What Am I Doing Here is a social group for gay women ages 40-55. (penny@thefreesite.com. www.whatamidoinghere.no-frills.net or.) (7/04)

Women on Wheels (WOW) is a motorcycle club for all women who like to ride. We meet monthly at Silver Dollar Pizza in Beaverton, sponsor riding clinics and



Matthew Dennison's *Zenithal* series focuses on place—literally and mentally—through June 28 at Froelick Gallery

take day trips. (5 pm second Sunday. 6940 SW Hall Blvd. jenorwh@aol.com.) (7/03)

Metro: Physical Recreation

Adventure Group, Portland's gay and lesbian outdoor group, organizes a variety of activities and social events including hiking, skiing, mountain biking, camping and rafting. (PO Box 2201, Portland, OR 97208-2201. 503-452-5680. www.adventuregroup.org.) (7/03)

The **Amazon Dragons** is a lesbian-focused competitive dragon boat racing club. Recruiting new members in 2003. Work hard, meet new people, and have fun. (Eileen 503-762-4742. www.amazondragons.org.) (7/03)

Forest Group outings are cooperative adventures for women. Participants are responsible for providing their own equipment and choosing outings appropriate for their skill and fitness level. All skill levels welcome. (Tami 503-659-2782. noc1127@hotmail.com. www.geocities.com/noc1127/forestpdx.) (7/03)

The **Gay Women's Golf Group** welcomes all levels of players. (www.turfgriz.com.) (7/03)

The **Lesbian Equestrian Group** gets together for equestrian activities in the Pacific Northwest. (Denise 503-654-3865. Lynn 503-777-2339. keirav@drtrap.com.) (7/03)

The **Lesbian Garden Club** is a group of women who love gardens and gardening. They exchange plants, seeds, advice and encouragement while having a good time. Call or e-mail for a copy of the newsletter and information about upcoming events. (Kathe 503-909-2002. lgcaregon@aol.com.) (7/03)

Out Dancing teaches dancing for same-sex couples at Ankeny Street Studio. Classes for different dance styles start the first Friday and first Sunday of each month. Also a monthly dance social. (503-236-5129. out_dancing@yahoo.com.) (7/03)

The **Pacific Coast Yacht Club** welcomes gay and lesbian sailboat and powerboat owners to cruise the Willamette River, Columbia River and Multnomah Channel. Promotes good fellowship and safe boating. (503-345-8523. pccyclub@earthlink.net.) (7/03)

The **Portland Gay and Lesbian Bowling Association** is in its 25th season! Meets Sundays at Hollywood Lanes. Drop-ins welcome anytime. (3:30 pm. 4030 NE Halsey St. Mailing address: PO Box 80002, Portland, OR 97208-1002. 503-293-0438. bowlpdx@aol.com. www.pdxbowl.com.) (7/03)

Whether you're a running novice or a seasoned marathoner, **Portland Frontrunners** welcome gay, lesbian, bi and trans people of all abilities and interests. (503-819-4626. www.portlandfrontrunners.org.) (7/03)

Potter's House Ministries offers dancing every third Saturday of the month. (7-10 pm. 3830 SE 62nd Ave. 503-775-5024.) (7/03)

Rose City Softball Association is an adult softball league for the gay, lesbian and bi community and friends in the Portland metropolitan area. Offers an open division and a women's division and is affiliated with the North American Gay Amateur Athletic Alliance. (503-552-4769. www.portlandgayssoftball.com.) (7/03)

Rosetown Ramblers, Portland's gay and lesbian square dance club, dances at mainstream and plus levels. (PO Box 5352, Portland, OR 97228-5352. www.rosetownramblers.com.) (7/03)

Ski Out is a group of Portland-area gay men, lesbians and supportive friends who meet for downhill ski and snowboard trips to Mount Hood every other weekend. (www.skiout.org.) (7/03)

Swim Team for the gay and lesbian community offers coached workouts for all skill levels. Come swim with the Pups and improve your health and techniques. Practices are at the Grant High School pool. (Megan ghey214@yahoo.com. www.geocities.com/swimpdx.) (7/03)

Team Tennis meets 8 am-noon Sunday at University of Portland. First time is free, then \$3 for subsequent play. (503-735-9058 or 503-282-7210. rayscothw@yahoo.com.) (7/03)

Trillium Morris Dancers welcomes all orientations and genders to join in a vigorous and celebratory English dance tradition, practicing weekly for informal summer performances. (6:30 pm Monday. 503-234-4594. morris@eastsidewebsites.com. www.eastsidewebsites.com/morris.) (7/03)

Central Oregon: Social

The **Lesbian Network of Central Oregon** welcomes all lesbian, bi and trans women for monthly activities, including potlucks, dances and drumming circles. (541-317-8457.)

Social group for **gay and bi men** in central Oregon. Monthly dinners, annual barbecue and holiday parties. (541-312-8881.) (7/03)

Southern Oregon: Social

Abdell-Elia Lambda Community Center plays host to social events and groups. Call for schedule. (717 Siskiyou Blvd., Ashland. Mailing address: PO Box 927, Ashland, OR 97520. 541-488-6980. www.abdells.org.) (7/03)

Willamette Valley: Physical Recreation

The **OUTdoor Group** is a friendly, inclusive bunch of Eugene people who go biking, hiking, skating, mushroom hunting, skiing, hot springing and just about any other activity you can dream up. Occasional weekend camping. (Kim 541-484-2147. kims@efn.org. www.outdoorgroup.org.) (7/03)

Frontrunner and Walkers go out every Saturday morning in Eugene. (9 am. 15th and Agate. Hank 541-484-6259 or Sadie 541-485-3282.) (7/03)

The **Eugene GLBT Tennis Group** gets together weekends to play for fun and exercise. Open to all ages and skill levels. (kfranken8@yahoo.com.) (7/03)

Willamette Valley: Social

The **Capitol Forum** is a sexual minority social service organization serving the mid-Willamette Valley. (503-363-0006. PO Box 663, Salem, OR 97308-0663. www.salemcf.org.) (7/03)

Confluence: The Willamette Valley Mixed GALA Chorus rehearses 4-6:30 pm Sundays at Unitarian Universalist Congregation of Salem, 5090 Center St. NE. (541-754-4144. confluence@aol.com. www.confluencechorus.org.) (7/03)

The **Eugene Lesbian/Gay/Bisexual 20s/30s Social Club** enjoys a weekly game night and brunch every Sunday at Braif's. (Brian 541-485-3437.) (7/03)

Eugene's **Gay Movie Group** gets together to view and discuss GLBT film. (7 pm Thursday. kfranken8@yahoo.com.) (7/03)

The **Lesbian Connection (TLC)** meets once a month for potlucks and other various fun activities in Eugene. All women welcome. (Bonnie 541-683-2793.) (7/03)

Lesbian Dance Club of Eugene teaches ongoing ballroom dance lessons. (suselynd@yahoo.com.) (7/03)

Marionberry Salon meets monthly in Salem for potlucks and discussion of books touching on the gay/lesbian/bi experience. (Cary 503-363-6036. marionberrysalon@aol.com.) (7/03)