

Demonstrators protest Oct. 4 in West Hollywood, Calif., after the district attorney decided not to file hate crime charges against the suspects in the Trev Broudy beating

that do not cover sexual orientation. Five states have no hate crimes laws. As written, federal hate crime law does not cover sexual orientation.

"This case is a perfect example of why it is so important that we have federal hate crime laws that cover the gay, lesbian, bisexual and transgender community," Kilbourn said. "There have been too many instances when there is clear evidence that a hate crime has occurred, and yet prosecutors fail to pursue hate crime charges. We need a federal law in place to uniformly protect people across the country."

U.S. Sen. Gordon Smith, R-Ore., is working to pass the Local Law Enforcement Enhancement Act, which would add real or perceived sexual orientation, gender and disability to federal hate crime laws and allow federal assistance in investigating and prosecuting hate crimes like the ones in West Hollywood.

While other serious crime has been decreasing nationally, hate crimes have increased, according to the FBI. Hate crimes based on real or perceived sexual orientation constitute the third-highest reported category each year.

HUMANISTIC RABBI TO PRESENT SEMINAR ON BIBLICAL ORIGINS

The founder of Humanistic Judaism, a movement that includes some of the world's first openly gay and lesbian rabbis, will present a seminar next month on "The Origins of the Bible: The Early History of the Jews."

Rabbi Sherwin T. Wine will lead the special event from Nov. 8 to 10 at the Mallory Hotel, 729 S.W. 15th Ave. The Friday evening lecture, following a Shabbat celebration, is "Rethinking the Bible." It is free and open to the public, but reservations are required.

The seminar—one of a series offered by the International Institute for Humanistic Judaism—is being brought to Portland by the Kol Shalom Community for Humanistic Judaism. Seven lectures and discussions cover the latest research and conclusions of biblical scholars and archeologists.

Saturday's topics are "The Semitic Setting" and "The Emergence of Judah and Israel" in the morning and "The Prophetic Agenda" and "The Trauma of Exile" in the afternoon. Sunday's lectures cover "The Emergence of the Torah" and "Finishing the Bible."

Wine is the senior rabbi at Birmingham

Temple in Farmington Hills, Mich., the first Humanistic Jewish congregation, which he founded in 1963. In 1969 he founded the Society for Humanistic Judaism, which now has affiliates in 35 North American cities. He is the author of four books: *Humanistic Judaism*, *Judaism Beyond God*, *Celebration* and *Staying Sane in a Crazy World*.

Cost for the entire series is \$100 or \$80 for Kol Shalom members. Saturday only is \$70 or \$60, and Sunday only is \$40 or \$35.

Prices include seminar materials, snacks and a vegetarian lunch Saturday. A \$5 surcharge will be added for those who are not preregistered. Scholarships are available for students unable to pay the full cost and who submit a request before Oct. 25.

For information, reservations and registration forms, call 503-297-4288 before Nov. 1.

'KILL QUEERS' SINGER TOURS U.S.

Violently homophobic reggae star Beenie Man is scheduled to perform Oct. 29 at the Ashland Armory in southern Oregon. In his native Jamaica, he has a huge following with widespread public support for his incitement that queers should be put to death.

His latest single, "Feel It Boy," is a duet with Janet Jackson, who has been condemned by the U.K. gay rights group OutRage! for "helping make Beenie Man respectable and mainstream." Although the record is not homophobic, his previous songs have promoted the murder of gay men and lesbians.

His hit tune "Bad Man Chi Chi Man" instructs listeners to kill gay disc jockeys and boasts that people would gladly go to jail for killing a queer. "Chi chi man" is a Jamaican patois slang insult, equivalent to "queer" and "faggot."

"If yuh nuh chi chi man wave yuh right hand and (NO!!!)/If yuh nuh lesbian wave yuh right hand and (NO!!!)," Beenie Man raps. "Some bwoy will go a jail fi kill man tun bad man chi chi man!!!/Tell mi, sumfest it should a be a showdown/Yuh seem to run off a stage like a clown (Kill Dem DJ!!!)."

In a previous song, "Damn," Beenie Man raps, "I'm dreaming of a new Jamaica, come to execute all the queers."

Continued on Page 11

The Questions: IRA? Roth 401k? Risk?
College? Long Term Care? 401(k)?
ROLLOVER? **SEP?** LIFE INSURANCE?
Disability? Roth IRA?

The Answers: FLOREID WALKER

2002 Chairman's Advisory Board Member

WADDELL & REED
Financial Services
Investing. With a plan.™

For a personal financial plan, call:
FLOREID WALKER
Senior Financial Advisor
503.238.6036 ext 109

WADDELL & REED Member SIPC
500 N.E. Multnomah, Suite 278, Portland, OR 97232
www.waddell.com
email: floreidwalker@wradvisors.com

Retail Nursery - Landscape Services (OLBC#6774)

Fall Is The Ideal Time to Plant

Join Us for Our Series of Specials Sales

- Oct 17-23 - 20% Off All Mixed Border Plants, Shrubs, Clematis and Climbers in Stock
- Oct 24-30 - Additional Savings on All Plants in Stock
- Winter Hours - Open by Appointment Starting November 1

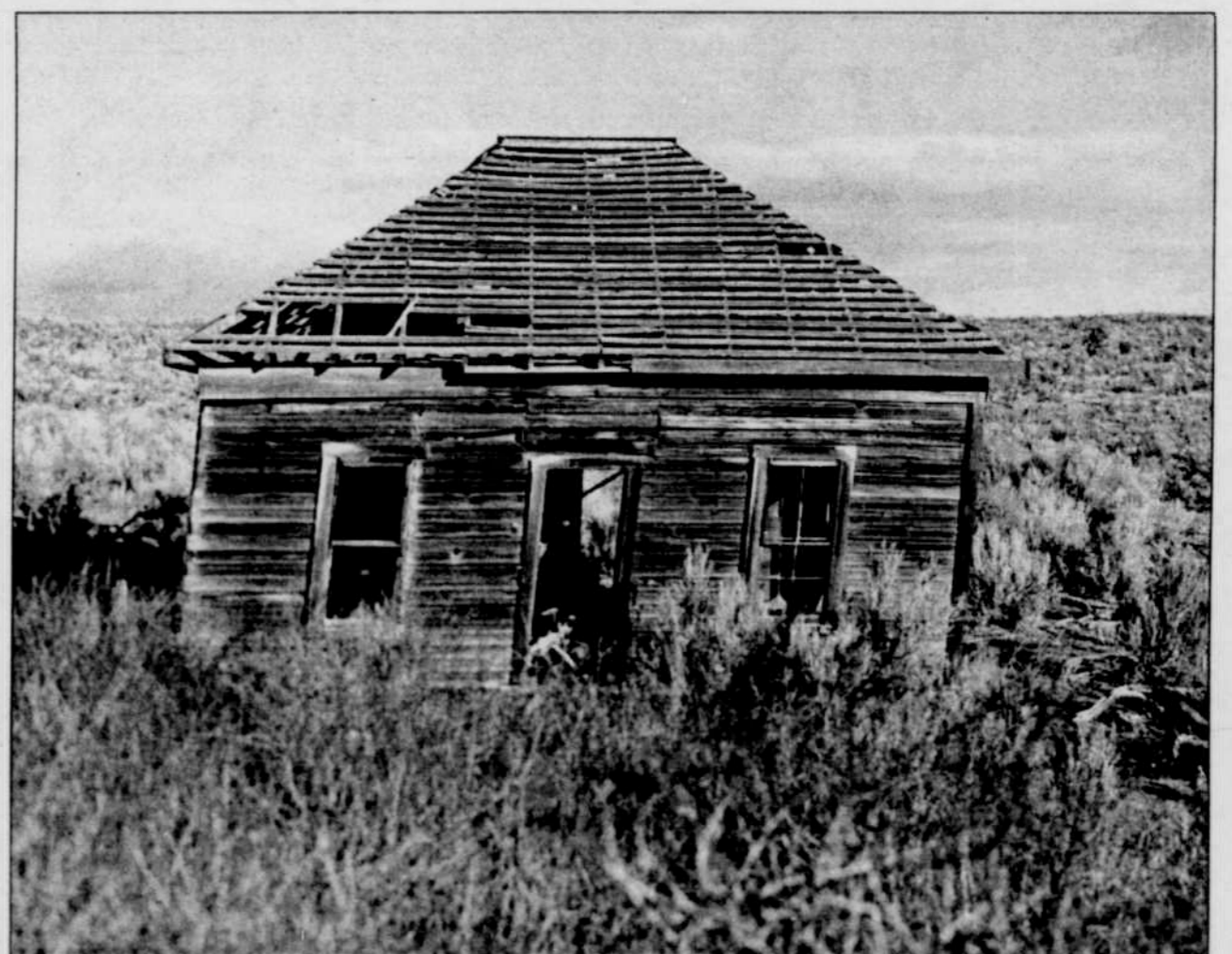
Gift Certificates Available for the Holidays

JOY CREEK NURSERY

20300 NE Watson Rd
Scappoose, OR 97056

For Information Call:
503/543-7474
Open daily 8am-5pm

National Catalogue Sales ~ www.joycreek.com



A NICE CUSHY CHAIR AND THE PLACE IS DONE.

The finest in trend defying, well crafted furniture, reasonably priced, can be found lounging about our store. 1100 SE Grand Ave. Monday-Saturday 9 am-6:30 pm, Sunday 11 am-5 pm, 503.238.1900.

FALL PLANTING SEMINAR • OCT. 26TH, 11:00 AM
Winter container gardening with Hoyt Arboretum's Dan Moeller

REJUVENATION
PORTLAND OREGON