

# outreach

**Rainbow Rascals** is open to all gay and lesbian parents of similar-age children (toddler to 7 years) in the Salem area to get together for fun and support. (Kim Olsen 503-581-5102. [www.rainbowrascals.org](http://www.rainbowrascals.org)) (11/02)

**Mentors and Protégés (MAP)** is a group of gay men 18 and older. Meets every second Thursday in Corvallis. (Send a self-addressed, stamped envelope to PO Box 231, Foster, OR 97345.) (11/02)

**Parents, Families and Friends of Lesbians and Gays (PFLAG)** provides support, education and advocacy in Salem. (7-9 pm third Wednesday. First United Methodist Church, 600 State St., Salem. Mailing address: PO Box 121, Gates, OR 97346. 503-292-9668 or 503-897-2524.) (11/02)

**Parents, Families and Friends of Lesbians and Gays (PFLAG)** provides support, education and advocacy in Eugene. (6:45-8:45 pm third Mondays. First Congregational Church, 1050 E 23rd Ave., Eugene. 541-302-4422.) (11/02)

**Parents, Families and Friends of Lesbians and Gays Schools and Youth Team** provides information, training, networking and advocacy to make schools safe and fair for all, regardless of sexual orientation or gender identity. (541-242-2746.) (11/02)

## HEALTH

### Metro: Anti-violence

**Bradley-Angle House** provides emergency shelter for female-identified domestic violence survivors and a support group for women battered by women. (Ari 503-232-7805.) (11/02)

**Clackamas Women's Services** offers shelter, support and resource referral to survivors of domestic and sexual violence. Lesbian, bi and trans friendly. Wheelchair accessible. TTD, relay calls and collect calls accepted. (Office: 503-722-2366. Crisis Line: 503-654-2288.) (11/02)

**Family Center Outreach Office**, a program of Volunteers of America located in Southeast Portland, offers support groups and drop-in services to women and children who are survivors of domestic violence. (Samantha 503-771-5503.) (11/02)

**Portland Women's Crisis Line** offers services for victims/survivors of domestic violence and sexual assault. 24-hour crisis hotline with interpretation services for non-English speakers. Advocacy for those filing restraining orders in Multnomah County. Support groups for victims/survivors of violence, rape/sexual assault and adult survivors of childhood sexual abuse. All services are free and confidential. (503-235-5333 or 888-235-5333.) (11/02)

**Bradley-Angle House** provides individual support and advocacy for queer youth of all genders who have experienced emotional, physical or sexual abuse. Free, confidential and safe. (Ari 503-232-7805.) (11/02)

### Metro: Mental Health

**Helios Counseling** offers HIV+ counseling, medication management and addiction treatment to the lesbian, gay, bi and trans communities. An Oregon Health Plan and Ryan White Program provider. (525 NE Oregon St., #220, Portland, OR 97232. 503-674-7777.) (11/02)

**Gay but not happy?** Depression? Relationship problems? Join our support group for gay men led by experienced gay therapist William Douglas, M.A. Peaceful, rustic setting. (503-292-1069. [lamdoug@aol.com](mailto:lamdoug@aol.com).) (11/02)

**YWCA of Greater Portland Counseling Center** offers sliding fee scale counseling for individuals, couples and groups in a safe, confidential and supportive environment. Also offers a Lesbian Support Group on Wednesday evenings. (17 SW Second Ave. 503-294-7440 or 503-294-7401, ext. 2017.) (11/02)

### Metro: Recovery

**Lunch Bunch** plays host to Alcoholics Anonymous meetings at noon daily and 1 pm Sundays for gays and lesbians but is open to everyone. (Metropolitan Community Church of Portland, 2400 NE Broadway.) (11/02)

### Metro: Sexual

**Multnomah County Health Department STD Program** offers HIV and STD testing by appointment Monday-Friday and on a first-come, first-served walk-in basis. Also offers hepatitis A and B testing, treatment, vaccinations and community education for gay and bi men. (Sixth Floor, 426 SW Stark St. 503-248-3700.) (11/02)

### Willamette Valley: Health

**Womenspace** provides a 24-hour hot line and shelter for women, men and children who have been abused physically, sexually or emotionally. Spanish speaking available. Plays host to a lesbian and bi women's support group. (Crisis: 800-281-2800. Business: 541-485-8232.) (11/02)

### Willamette Valley: Recovery

**Eugene SAA** is a 12-step fellowship for those who are suffering from addictive sexual behaviors. Sexual orientation is not an issue. (541-342-5582. [www.eugenessaa.com](http://www.eugenessaa.com).) (11/02)

## SOCIAL

### Metro: Arts & Music

**Portland Gay Men's Chorus** is open to singers, support members and volunteers. Seeking an individual to fill the role of Music Librarian. (503-226-2588. [www.pdxgmc.org](http://www.pdxgmc.org).) (11/02)

The **Portland Lesbian Choir** is a nonaudition community choir that welcomes singers, supportive members and volunteers. (503-241-8994. [www.plchor.org](http://www.plchor.org).) (11/02)

**Real Connection** is a social gathering for gay men who are artists, writers or musicians or who pursue some creative activity. Monthly potlucks on the second Friday. (Carl 503-284-2971.) (11/02)

### Metro: General

**Asian & Pacific Islander Lesbians and Gays** is a nonprofit voice and community for Oregon Asian and Pacific Islander lesbians, bisexuals and gay men. Activities include potlucks, recreational outings, retreats, cultural events and workshops. Safe environment to meet and connect with other Asians and Pacific Islanders. (PO Box 826, Portland, OR 97207. 503-299-0120. [apl\\_g\\_pdx@yahoo.com](mailto:apl_g_pdx@yahoo.com).) (11/02)

**Bisexual Community Forum** is an age- and gender-inclusive social, support and education network. Activities include dances, potlucks, field trips and a polyamory interest group. Meetings are every first Monday. (7:30 pm. 3 Friends Coffeehouse, 201 SE 12th Ave. Laury 503-285-4848.) (11/02)

**Cascade Flyers** are gay, lesbian and bi aviators, both private and professional, in Washington, Oregon and southern British Columbia. Dinner meetings in Portland area. (503-228-6675. [casflyers@yahoo.com](mailto:casflyers@yahoo.com). [www.geocities.com/casflyers](http://www.geocities.com/casflyers).) (11/02)

**COQSURE** is a social group for people who were born or raised female but who don't identify as totally female (FTM, butch, boy, etc.). This includes people born female or intersexed and who are unsure of their gender or who are considering changing identity, guys who are exploring possibilities for inner/outer gender, those who are not transitioning but identify always or sometimes as guys, as well as guys who are transitioning or have transitioned. We welcome significant others and members of all sexual orientations. Monthly social. (503-471-1515.) (11/02)

**50+ lesbian social group for women** meets on the third Saturday of the month. (4-7 pm. 503-642-3360 or 503-286-3575.) (11/02)

**Friends** is a weekly support and discussion group for African American gay and bi men. (5-7 pm Wednesdays. Brian 503-287-8651.) (11/02)

**Funny Ladies Tea and Posey Society** is a social group for lesbians 35 and older. They meet for a potluck on the second Saturday of each month. E-mail newsletter is free on request. (503-760-0816. [flataps@aol.com](mailto:flataps@aol.com).) (11/02)

**Gay Men's Drawing Group** meets on the fourth Saturday of the month; models and guys who like to draw are welcome to call for more information. (Phillip 503-287-7447.) (11/02)

**Imperial Sovereign Rose Court of Oregon** is the oldest gay, lesbian, bi and trans social/fundraising organization in the state of Oregon. Meetings are the first two Mondays of each month. ([www.poissonwaters.com](http://www.poissonwaters.com) or [www.rosecourt.org](http://www.rosecourt.org).) (11/02)

**Jewish Gay Men's Group**—call for meeting time and place. (503-246-5939. [efraimlev@aol.com](mailto:efraimlev@aol.com).) (11/02)

**Leather Night and Red Hanky Social** is the first and third Friday of each month at Gail's Dirty Duck. (9 pm-midnight. 439 NW Third Ave. 503-224-8446. [pdxsaltdy@aol.com](mailto:pdxsaltdy@aol.com).) (11/02)

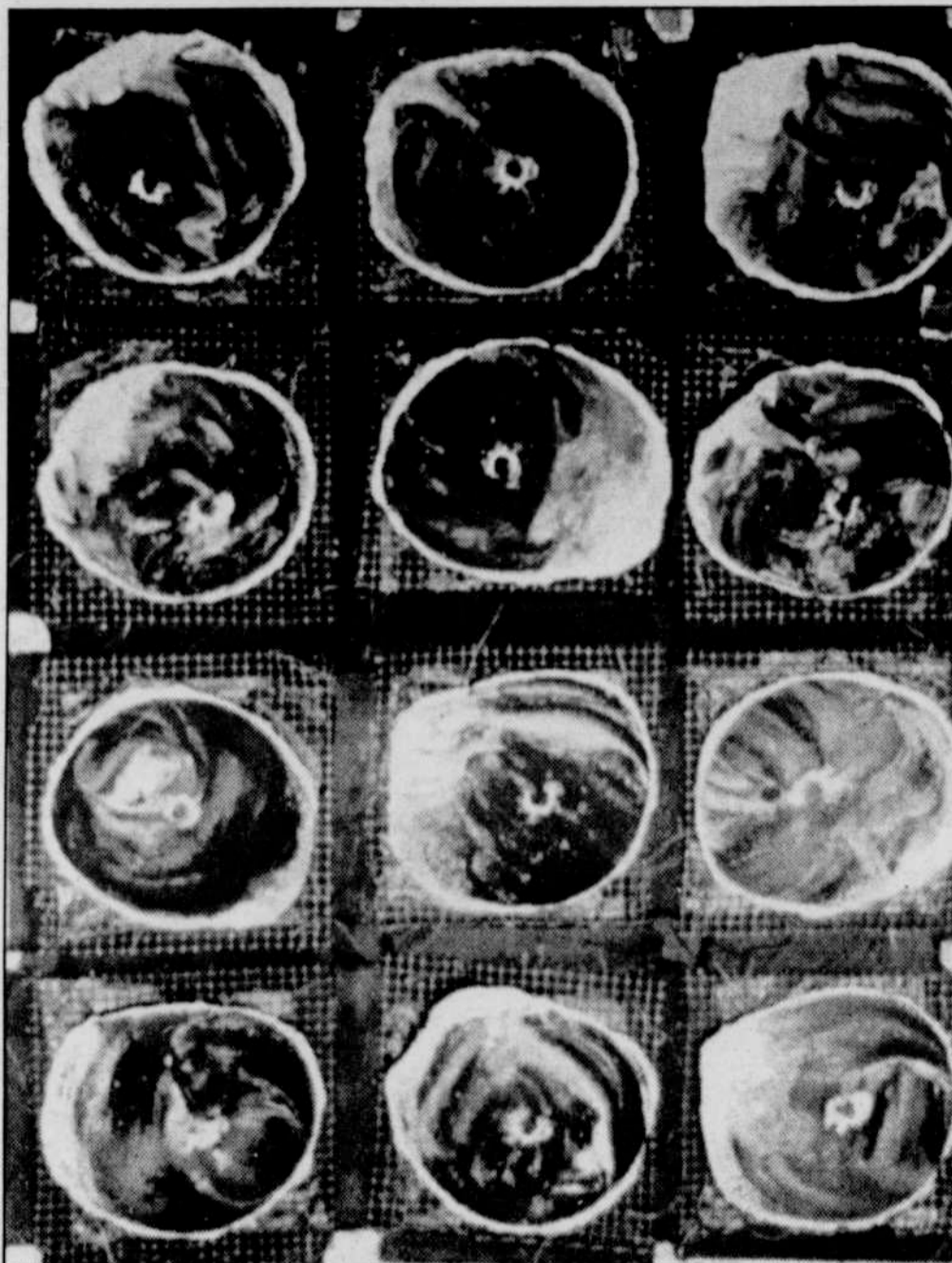
**Leatherwomen's Supper Club** is a social group for women who share an interest in D/S, age-play, clothing fetishes or B/D/S/M. Potlucks and discussions are held on third Saturdays. (PO Box 14931, Portland, OR 97293.) (11/02)

**Lesbians Enjoying Nature and Science (LENS)** is a fun-loving group of women who enjoy exploring all aspects of the environment. Activities include bird watching, nature walks, archaeology, camping, kayaking, star gazing, an occasional "lecture" and a monthly planning potluck. No experience necessary. (6:45-8:30 pm second Thursday planning meeting. 503-617-1989. [kate@wsi-or.com](mailto:kate@wsi-or.com).) (11/02)

**Lulu's Pervy Playhouse** is a social group for self-identifying women who are into S/M. Play parties are held on the second Saturday of the month. (503-231-3992. [lululst@excite.com](mailto:lululst@excite.com). [www.spiretech.com/~awntie/lulu.htm](http://www.spiretech.com/~awntie/lulu.htm).) (11/02)

**Men's FilmTalk** meets regularly to discuss films. ([filmtalk@aracnet.com](mailto:filmtalk@aracnet.com).) (11/02)

**Mom2Mom** is an alcohol-free social group for families



You've raced for the cure, now visit *Up Close in Pink*, an art project exploring expressions of people affected by breast cancer, through Sept. 27 at Portland State University's White Gallery

(including dads). Have fun and make connections and friendships with other great families! (Flora 503-284-0216 or Jaqueline 503-282-0565.) (11/02)

**Mount Hood Queer** networks professionally and socially. (503-701-8302.) (11/02)

**Northwest Gender Alliance** is a social and support organization for cross-dressers and transsexuals. Monthly open meetings and socials. (PO Box 4928, Portland, OR 97208. 503-646-2802. [www.teleport.com/~nwga](http://www.teleport.com/~nwga).) (11/02)

**ORGAN (Oregon Regional Gay and Naked)** is a social club for gay men who enjoy being nude. Monthly potlucks and events. Guests are invited to attend two events before deciding on membership. (PO Box 3152, Portland, OR 97293-3152. [organ\\_info@organ-pdx.org](mailto:organ_info@organ-pdx.org). [www.organ-pdx.org](http://www.organ-pdx.org).) (11/02)

**Over 45 Gay Men's Support Group** is a social group to discuss common life issues and make new friends. We are looking for new members for our bi-weekly meetings in inner Southeast Portland. (Gregory. 503-232-8392.) (11/02)

**A Pinochle Group** meets at Hobo's weekly for friendly games. (6 pm Sunday. 120 NW Third Ave. George 503-760-1248.) (11/02)

**Portland Bisexual Alliance** sponsors social and political events for bi and bi-friendly people and organizes the Portland Bi Day rally. (503-775-9717. [pba@biportland.org](mailto:pba@biportland.org). [www.biportland.org](http://www.biportland.org).) (11/02)

**Portland Bisexual Women** is a support and discussion group for bi and questioning women. Women of any age, race, ability or cultural origin are encouraged to attend. Social every fourth weekend. (503-283-6433. [portlandbiwomen@aol.com](mailto:portlandbiwomen@aol.com).) (11/02)

**Portland Leather Alliance** is a pansexual, nonprofit organization dedicated to fostering a positive community for safe, sane and consensual alternative adult sexualities in general and S/M/leather/fetish in particular. (503-727-3148. [www.pdxleatheralliance.org](http://www.pdxleatheralliance.org).) (11/02)

**Portland Leather Men** meet every second Saturday for potluck and socializing. Meet men into a leather lifestyle and keep abreast of leather happenings. No dues, no formal organization, no officers or board, just leather socialization for the past 15 years. (360-896-6665. [furry@aracnet.com](mailto:furry@aracnet.com).) (11/02)

**Portland Metro Prime Timers** is a social group for mature gay men and those who appreciate them, coming together for social, educational and cultural purposes. (PO Box 5884, Portland, OR 97228. 503-286-4613 or 360-254-1718. [pdxprimetimers@yahoo.com](mailto:pdxprimetimers@yahoo.com). [www.geocities.com/pdxprimetimers](http://www.geocities.com/pdxprimetimers).) (11/02)

**Portland State University Queers and Allies** offers educational and social programming and support and referral services for people of all orientations. Tackles issues pertinent to the queer community on campus and beyond. Non-PSU students also welcome to attend activities and meetings. (441A Smith Memorial Center, 1825 SW Broadway, Portland, OR 97201. 503-725-5681. [queersandalies@mail.pdx.edu](mailto:queersandalies@mail.pdx.edu). [www.queersandalies.pdx.edu](http://www.queersandalies.pdx.edu).) (11/02)

**Rose City Discussion Club**, the largest open pansexual/alternative sexuality club in the Northwest, is open to all orientations, fetishes and lifestyles that are safe, sane and consensual. Monthly meetings, workshops and newsletter. (503-972-1869. [rcdc@teleport.com](mailto:rcdc@teleport.com). [www.rcdc.org](http://www.rcdc.org).) (11/02)

**Together Works**, a confidential group for lesbians, gays, bisexuals and friends, meets for socials and discussions of topics of mutual interest. Meets second and fourth Mondays. (7:30 pm May-September, 7 pm October-April. First Baptist Church, 125 SE Cowles St., McMinnville. Don 503-434-6266.) (11/02)

**Young Men's Coffee Talk** is every Wednesday at 3 Friends Coffeehouse. (7-9 pm. 201 SE 12th Ave.) (11/02)

**Washington County Men Talk** is an opportunity for gay men living in Washington County to get together in informal settings on a monthly basis for social interaction. (6:30-8:30 pm second Friday. Art 503-642-2479 or [arwil@thevnet.com](mailto:arwil@thevnet.com).) (11/02)

**Westside Lesbians at Play** enjoy happenings on the west side of town: potlucks, kayaking, talking, lots of laughter and more. Anybody play backgammon? (Louise 503-643-3209.) (11/02)

**Women on Wheels (WOW)** is a motorcycle club for all women who like to ride. We meet monthly at Silver Dollar Pizza in Beaverton, sponsor riding clinics and take day trips. (5 pm second Sunday. 6940 SW Hall Blvd. jenorwh@aol.com.) (11/02)

**Women Who Cook and Recipe Exchange** meet first Saturday of the month. Let's break bread together, share cooking tips and good food, and meet new friends. (Jeanette or Monica 503-591-1823. [jvr@pccp.com](mailto:jvr@pccp.com).) (11/02)

### Metro: Physical Recreation

**Adventure Group**, Portland's gay and lesbian outdoors group, organizes a variety of activities and social events including hiking, skiing, mountain biking, camping and rafting. (Mailing address: PO Box 2201, Portland, OR 97208-2201. 503-452-5680. [www.adventuregroup.org](http://www.adventuregroup.org).) (11/02)

**BiNet Oregon** is a statewide organization that encourages networking within the bisexual community as well as among others in the sexual minorities community. We play host to numerous social events, monthly munches and an annual gathering. (503-622-1178. [www.binetor.org](http://www.binetor.org).) (11/02)

**Cycling Lesbians in Portland (CLIPS)** meets twice monthly for bicycle rides followed by coffee/breakfast. All riding levels welcome. (503-254-6971.) (11/02)

**Forest Group** outings are cooperative adventures for women. Participants are responsible for providing their own equipment and choosing outings appropriate for their skill and fitness level. All skill levels welcome. (Tami 503-659-2782. [ncc1127@hotmail.com](mailto:ncc1127@hotmail.com).) (11/02)

[www.geocities.com/ncc1127/forestpdx](http://www.geocities.com/ncc1127/forestpdx).) (11/02)

The **Gay Women's Golf Group** welcomes all levels of players. (503-380-1020. [pgwgg@yahoo.com](mailto:pgwgg@yahoo.com).) (11/02)

The **Lesbian Equestrian Group** gets together for equestrian activities in the Pacific Northwest. (Denise 503-654-3865. Lynn 503-777-2339. [kelrav@rdrop.com](mailto:kelrav@rdrop.com).) (11/02)

**Lesbian Garden Club** is a group of women who love gardens and gardening. They exchange plants, seeds, advice and encouragement while having a good time. Call or e-mail for a copy of the newsletter and information about upcoming events. (Kathe 503-909-2002. [lgcregon@aol.com](mailto:lgcregon@aol.com).) (11/02)

**Out Dancing** teaches dancing for same-sex couples at Ankeny Street Studio. Classes for different dance styles start the first Friday and first Sunday of each month. Also a monthly dance social. (503-236-5129. [out\\_dancing@yahoo.com](mailto:out_dancing@yahoo.com).) (11/02)

The **Portland Gay and Lesbian Bowling Association** is in its 25th season! Meets Sundays at Hollywood Lanes. Drop-ins welcome anytime. (3-30 pm. 4030 NE Halsey St. Mailing address: PO Box 80002, Portland, OR 97208-1002. 503-293-0438. [bowpdx@aol.com](mailto:bowpdx@aol.com). [www.pdxbowl.com](http://www.pdxbowl.com).) (11/02)

Whether you're a running novice or a seasoned marathoner, **Portland Frontrunners** welcome gay, lesbian, bi and trans people of all abilities and interests. (503-819-4626. [www.portlandfrontrunners.org](http://www.portlandfrontrunners.org).) (11/02)

**Potter's House Ministries** offers dancing every third Saturday of the month. (7-10 pm. 3830 SE 62nd Ave. 503-775-5024.) (11/02)

**Rose City Softball Association** is an adult softball league for the gay, lesbian and bi community and friends in the Portland metropolitan area. Offers an open division and a women's division and are affiliated with the North American Gay Amateur Athletic Alliance. (503-450-9999. [www.portlandgaysoftball.com](http://www.portlandgaysoftball.com).) (11/02)

**Rosetown Ramblers**, Portland's gay and lesbian square dance club, dances at mainstream and plus levels. (PO Box 5352, Portland, OR 97228-5352. [www.rosetownramblers.com](http://www.rosetownramblers.com).) (11/02)

**Swim Team** for the gay and lesbian community offers coached workouts for all skill levels. Come swim with the Pups and improve your health and techniques. Practices are at the Grant High School pool. (Megan at [gbay214@yahoo.com](mailto:gbay214@yahoo.com). [www.geocities.com/swimpdx](http://www.geocities.com/swimpdx).) (11/02)

**Team Oregon** organizes athletes to participate in the Gay Games Nov. 2-9, 2002, in Sydney, Australia. If you want to participate in the opening and closing events, you must be part of Team Oregon. ([www.teamoregonusa.com](http://www.teamoregonusa.com).) (11/02)

**Trillium Morris Dancers** welcomes all orientations and genders to join in a vigorous and celebratory English dance tradition, practicing weekly for informal summer performances. (6:30 pm Monday. 503-234-4594. [morris@eastsidewebsites.com](mailto:morris@eastsidewebsites.com). [www.eastsidewebsites.com/morris](http://www.eastsidewebsites.com/morris).) (11/02)

### Southern Oregon: Social

**Abdill-Ellis Community Center** plays host to social events and groups. Call for schedule. (717 Siskyou Blvd., Ashland, OR. Mailing address: PO Box 927, Ashland, OR 97520. 541-488-6990. [www.abdellis.org](http://www.abdellis.org).) (11/02)

### Willamette Valley:

#### Physical Recreation

The **OUTdoor Group** is a friendly, inclusive bunch of Eugene people who go biking, hiking, skating, mushroom hunting, skiing, hot springing and just about any other activity you can dream up. Occasional weekend camping. (Kim 541-484-2147. [kims@efn.org](mailto:kims@efn.org). [www.outdoorgroup.org](http://www.outdoorgroup.org).) (11/02)

**Frontrunner and Walkers** go out every Saturday morning in Eugene. (9 am. 15th and Agate. Hank 541-484-6259 or Sadie 541-485-3282.) (11/02)

The **Eugene LGBT Tennis Group** gets together weekends to play for fun and exercise. Open to all ages and skill levels. ([kfranken8@yahoo.com](mailto:kfranken8@yahoo.com).) (11/02)

### Willamette Valley: Social

**Confluence: The Willamette Valley Mixed GALA Chorus** rehearses 4-6:30 pm Sundays at Unitarian Universalist Congregation of Salem, 5090 Center St. NE. (541-754-4144. [confluence@aol.com](mailto:confluence@aol.com). [www.confluencechorus.org](http://www.confluencechorus.org).) (11/02)

The **Eugene Lesbian/Gay/Bisexual 20s/30s Social Club** enjoys a weekly game night and brunch every Sunday at Brail's. (Brian 541-485-3437.) (11/02)

The **Lesbian Connection (TLC)** meets once a month for potlucks and other various fun activities in Eugene. All women welcome. (Bonnie 541-683-2793.) (11/02)

**Marionberry Salon** meets monthly in Salem for potlucks and discussion of books touching on the lesbian, gay or bi experience. (Cary 503-363-6036. [marionberysalon@aol.com](mailto:marionberysalon@aol.com).) (11/02)

**Team Oregon** organizes athletes to participate in the Gay Games Nov. 2-9, 2002, in Sydney, Australia. If you want to participate in the opening and closing events, you must be part of Team Oregon. ([www.teamoregonusa.com](http://www.teamoregonusa.com).) (11/02)