

Classifieds

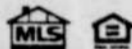
503-236-1253
promote your business here

REAL ESTATE

COLDWELL BANKER "For Your Palm Springs Place in the Sun"
EADIE ADAMS REALTY



John W. Butler
Bus: (760) 778-5500
Fax: (760) 323-7832
Cell/Pgr: (760) 774-0685
E-mail: ccsvs@aol.com
501 South Indian Canyon
Palm Springs, CA 92264



Advertisers know where the pot of gold is—JUST OUT!



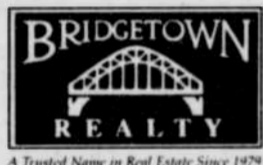
The Charm of Yesteryear

3 bedroom, 2 bath on quiet street offers timeless qualities throughout. Hardwood floors, 3 fireplaces, hot tub.

\$289,900!



Patrick Jenkins
503-788-8192
patrick@bridgetownrealty.com



A Trusted Name in Real Estate Since 1978

"It all starts with coffee..."

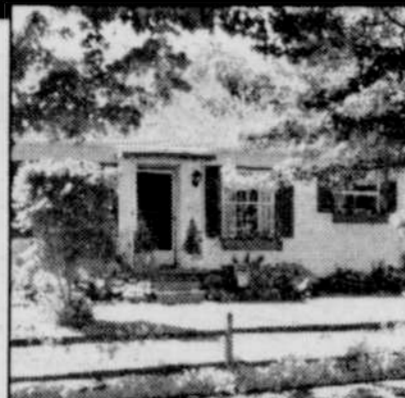


The key to finding the right house or successfully marketing your home is finding the right Realtor. So, how do you find a Realtor who is attentive to your needs and offers honest, expert advice? A cup of coffee perhaps?



Donald Falk, GRI
ASSOCIATE BROKER
503-335-9898 ext. 107
falkd@hasson.com

Cutest DAMN house on the planet



Busy or getting your hands dirty isn't your style? Come see this elegant yet whimsical home in Piedmont. Main floor w/ formal living room, master bedroom and music room which you pass through on the way to the formal garden. Totally enclosed by tall trees create a peaceful ambience that beckons a glass of wine and a moment to relax. Second bedroom up, cozy suite down w/ fireplace, bar, kitchen and bath. \$189,900.

Farrabee Fuller Century 21 Peninsula 503-286-5826 x 120

Dream Come True in Hillsboro!

Fabulous custom built dream home in lovely protected setting overlooking Turner Creek just completed! 5 bedroom, 4.5 bath, 5,094 sq. ft! Includes 1,100 sq. ft. apartment! Huge home theater, workout room, so much more!

PRICE SLASHED! \$469,000!

Organic Gardener's Paradise Only \$135,000!

Just listed, immaculate, charming large 2 bdrm with gorgeous, treed lot, oversized fully-fenced yard! Garage, lg workshop, gardens, berries, flowers galore! Hurry for this one!

VIEW PHOTOS of either of these fine homes at www.millynn.com

Millynn James

RE/MAX equity group
503.330.HOME (4663)
1.800.825.9948
See display ad in this issue!



PARKROSE BUNGALOW!



ZONED COMMERCIAL Home/Office/Shop? You decide!
Completely Remodeled
Vinyl Windows
Tiled Kitchen & Bath
Newly Painted Inside & Out
Refinished Wood Floors
Stove & Fridge Included
Great yard w/ Fruit Trees
\$92,500

Bob Harrington Your Real Estate Specialist
Phone: 503-277-2715
Fax: 503-626-2915 • E-mail: RharringtonC21@aol.com



Wright-Christie & Assoc.
2645 SW 153rd Dr.
Beaverton, OR 97006

JUST LISTED!

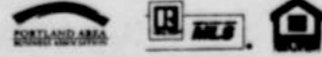
Hard-to-find newer one-level in primo Murray Hill area. Open floorplan, huge master bedroom walk-in closet, extensive hardwoods, lovely private yard. \$289,000



Deborah Betron
Broker, CRB, GRI



503/972.5657
www.bridgetownrealty.com



REAL ESTATE



Dazzling Panoramic City & West Hills Views

from this 16th floor corner unit in the award winning Fontaine Condominiums at 1220 NE 17th. 2 bdrm, secured parking, walk to shops on Broadway/Lloyd District or catch the light rail downtown. \$165,000.

MARK SOLON
Associate Broker
STELLAR REALTY & RENTALS, INC.
(503) 293-0285
(503) 310-1059

LOOKING FOR A CAREER CHANGE?



30-year-old local real estate company looking for new agents. On site schooling, call us about our scholarship plans.

Call **Richard Voss**
Broker/Owner
503-286-5826



RealtyRV@aol.com

WE RODE A GIANT SLUG AND FOLLOWED THE GLOWING SEA HORSES PAST A FIRE-BREATHING DRAGON



* WILLAMETTE HEIGHTS GEM

1912 Old PDX 5BD/3.5BA includes 1BD/1BA apt. (rent \$950) & guest cottage/office. E-Z conversion to sgl fam. Views from 3 covered porches. Open floor plan. Updated kitchens & baths. ML#318281. Rare opportunity! 3655 NW Thurman St. \$750,000.



* UNOBSTRUCTED OCEAN VIEWS!

1996 Custom 3BD/2BA home full of high-end features. Stunning views from 3 decks. Awesome master suite has jacuzzi tub & gas frplc. Fully furnished private retreat. ML#305813. 1780 Portland Ave, Oceanside, OR. \$425,000

GAIL DAVIS, REALTOR

Graduate Realtor Institute
Accredited Buyer's Representative



bender properties
4133 SE Division
Call **Gail Davis:**
(503) 203-2214
24-Hr. Voice Mail
More specific info? Ask for my free brochure. My satisfied clients tell the real story!
GailDavis.Realtor.com
E-mail - GailDavis@Realtor.com



Back to School Specials

Views, Comfort, Easy Living

\$196,000. Contemporary in SW Portland, 3bd/2ba, lg fam rm, dble car grg, fenced yard, deck off din rm. PCC, Mult. Village, shopping, etc. 11012 SW 51st Ave. off Patonac

Awesome Anton Park

\$199,000. Lg deck off din rm, vaulted ceilings, fireplace, 3bd/2ba, great rm off kitchen. Hdws, dble grg, calm cul-de-sac. Close-in Tigard. 11110 SW 124 Pl. off N. Dakoda

Nested Near the Trees

\$165,000. Maywood! Much bigger than it appears. Hdwrds, corner windows, big kitchen, 2bd on main, 3 bonus rms, lg fam rm/fireplace, patio, extended/oversized lot, fenced yard! It's a sleeper. Come & see—you'll love it. NE 91st.

Popular N. Irvington

\$225,000. Nature's NW. Eclectic style Old PDX, rare mouldings, slate rails, some hdws, some softwds, new kitchen, tropical yard, patio, cabana & more site high above the street. 3 bd/2ba, bonus rms, den, atrium, nook. 4115 NE 14th Ave @ Mason.

View of Mt. Hood

One-acre country living offered for \$245,000. 3bd/2ba, new ext. point, pristine surroundings, French doors, horse trails. 17681 S. Carter Ln. Oregon City/Beavercreek.

2.5 Acres Daylight Ranch

\$249,000. Gardeners paradise, 4 bd/2.5ba, deck, hot tub, rm to room, dble grg, needs a little love & attention. Good bones! 18418 S. Holly Ln. Oregon City/Beavercreek.

We are currently accepting new listings. Call us for a free market analysis of your home! Stock market not producing? Try real estate investment! Expand your retirement portfolio—call Celia & Terri for help!

CELIA LYON
(503) 260-6231
www.celialyon.com

TERRI POPEJOY
(503) 330-0400
www.terripopejoy.com



Bella Casa Realty Inc.
1523 SE Ankeny
Portland, OR 97214
503-231-SELL (7355)

The Perfect House...

and at the right price! It doesn't have to be just a pipe dream. Hard work and research can make dreams come true. Let an experienced buyer's agent help you discover the value in Portland's great neighborhoods.



George Marvin
Associate Broker



Office: 503-287-9370
Cell: 503-810-6476

SPECIALIZING in MOUNTAIN & RURAL PROPERTIES...a different world
My expertise makes a world of difference

DIANA WALSINGER, Associate Broker

503-622-1333
dwalsinger@equitygroup.com
www.equitygroup.com/dwalsinger

