

Secondhand smoke kills.



Protect  
the  
ones  
you  
love.

If you are ready to quit tobacco, call toll free:  
1-877-270-STOP(7867)  
TTY: 1-877-777-6534.

Oregon Department of Human Services

## PORTLAND POLICE BUREAU

Currently Hiring Lateral & Entry Police Officers  
\$34,861 - \$57,096 (January 2002)

Join the men & women of the Portland Police Bureau for  
an exciting, rewarding career in law enforcement.

**Minimum Requirements:**

An Associates Degree, 60 semester or 90 quarter hours of accredited college coursework.  
At least 21 years of age by date of hire.  
A US Citizen within 1 year from hire.

**Benefits:**

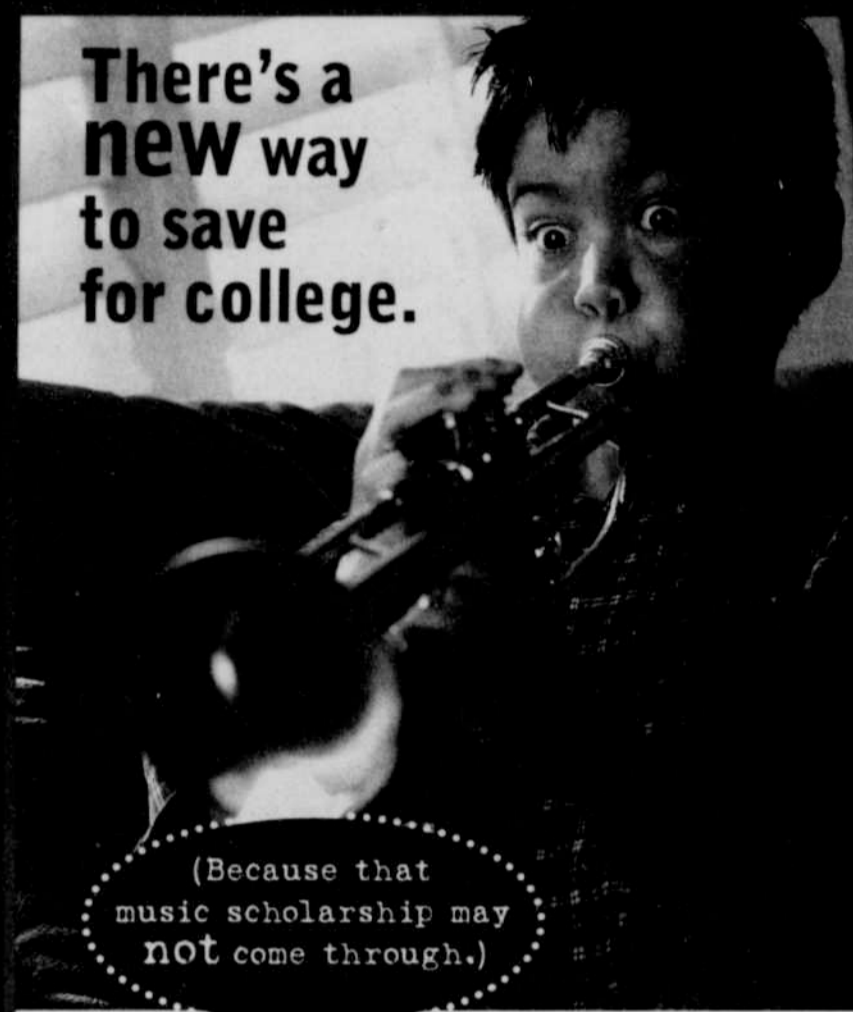
Full Family Medical, Dental & Vision  
City Pays 100% into retirement  
Paid Time Off  
Various Career Opportunities  
911 Patrol, Canine, Mounted Patrol, Transit Enforcement, Bicycle Patrol, Explosive Disposal Unit, Youth Programs (PAL, GREAT, DARE)  
Promotional Opportunities  
Sergeants, Detectives, Criminalists

For more information call 1-888-735-4259  
or visit our web site

The City of Portland is an Equal Opportunity Employer.

[www.portlandpolice.com](http://www.portlandpolice.com)

There's a  
new way  
to save  
for college.



(Because that  
music scholarship may  
not come through.)

Saving for college has never been more important. And, thanks to the Waddell & Reed InvestEd Plan, it's just gotten a little easier.

With InvestEd, you can invest as little as \$25 per month, and as much as \$177,000\*, on a tax-deferred basis. Then, beginning in 2002, when your investment is used for qualified higher education expenses, it can be withdrawn federal income tax-free. Investing free of federal income taxes helps to maximize the growth of your investment.

You can use InvestEd to fund post-secondary education for anyone - your kids, grandkids, nieces, nephews, friends, even yourself. And, regardless

of the beneficiary, as account owner, you maintain control over the investment.

What's more, you'll be utilizing Waddell & Reed's acclaimed investment management team and will receive personal advice and guidance from a Waddell & Reed financial advisor.

\*\$177,000 is the maximum account balance per beneficiary in 2001-2002



Find out more about the new way to save for college.

[waddell.com](http://waddell.com)



Established under the Arizona Family College Savings Program. InvestEd accounts are not insured by the state of Arizona and neither the principal invested nor the investment return is guaranteed by the state of Arizona. Investment management provided by Waddell & Reed Investment Management Company, a subsidiary of Waddell & Reed, Inc. For more information about InvestEd, please request a current prospectus. Read the prospectus carefully before you invest. State and local taxes may apply. Member SIPC

Floreid Walker, Senior Financial Advisor  
500 NE Multnomah St., Suite 278  
Portland, Oregon 97232  
phone: 503-238-6036 ext 109, fax: 503-238-7056

We Are Not The Best Looking Guys In Town



But We Are The Hardest Working

Insurance For:  
Life  
Auto  
Home  
Commercial  
Worker's Comp

Call Paul or Woody at 503/675-0800