

**Coastal Oregon: AIDS & HIV**

**Coastal AIDS Network** is a community-based organization providing HIV/AIDS prevention education and support services on the central Oregon coast. (2830 NE Highway 101, Lincoln City, OR 97367. 541-994-5597.) (11/01)

**Eastern Oregon: AIDS & HIV**

**Umatilla County Health Department** offers free information and testing. Off-site testing is also available. (431 SE Third St., Pendleton, John 541-278-5432.) (11/01)

**Washington: AIDS & HIV**

**Cascade AIDS Project Vancouver Project** provides nonmedical services to individuals and communities in southwest Washington. These services include support groups, emergency financial assistance, volunteer programs, information and referral. (Suite M100, 1104 Main St., Vancouver. 360-735-9170.) (11/01)

**Cowlitz County Health and Human Services** offers free hepatitis A and B immunization for needle exchange customers. It also provides educational materials, referrals, HIV testing and condoms. (2-4 pm Tuesday and Thursday, 1952 Ninth Ave., Longview. 360-414-5599.) (11/01)

**Free ongoing support group for men and women with HIV/AIDS** is facilitated by Dr. Rochana Koach. Sponsored by Cascade AIDS Project Quest. (6:30-8:30 pm Monday, Suite M100, 1410 Main St., Vancouver, Wash. 503-493-0288.) (11/01)

**Southwest Washington Health District** offers free HIV testing for gay and bi men. No needles used! (5-6:30 pm first and third Thursday, 1104 Main St., Vancouver. 360-397-8098.) (11/01)

**Willamette Valley: AIDS & HIV**

**HIV Alliance of Lane County** provides education, prevention, client services and health care. Registered nurse available. Spanish language assistance available. (1966 Garden Ave., Eugene. 541-342-5088. hivall@hivalliance.org.) (11/01)

**LifeLine AIDS Project** provides services and prevention education for HIV/AIDS in Salem and the Willamette Valley. (Suite J-20, 3896 Beverly Ave. NE. 503-371-4455.) (11/01)

**Oregon State Penitentiary HIV/AIDS Awareness Program (HAAP)** is an inmate-based program providing peer education, information referrals and support to all inmates regardless of HIV status or sexual orientation. Many programs are dependent on community volunteers. (HAAP, Oregon State Penitentiary Activities Department, Attention Karen Campbell, 2605 State St., Salem, OR 97310. Voicemail: 503-378-4207. Fax: 503-373-1008.) (11/01)

**Positive Connection PLWH of Yamhill County** provides advocacy, referrals to services and monthly meetings providing a social and support environment to residents in Yamhill County. The meetings are held on the third Tuesday of every month at a confidential location. (503-554-0701.) (11/01)

**Valley AIDS Information Network's** 24-hour hot line provides HIV/AIDS, hepatitis and STD information, support and referrals. English hot line, English and Spanish materials. Speakers for schools, recovery and adult groups. (Benton County and Albany: 541-752-6322 or 800-588-2437.) (11/01)

**COMMUNITY**

**Metro: General**

To register your domestic partnership, bring

\$60 cash to the Multnomah County offices. (8 am-4:45 pm Monday-Friday, 501 SE Hawthorne Blvd. 503-988-3027.) (11/01)

**Dads Support Group** meets first and third Tuesdays at Augustana Lutheran Church. This group is for gay, bi or trans men who parent biological or adopted children. (7 pm, 2710 NE 14th Ave. 503-228-3892.) (11/01)

**It's My Pleasure** offers a wide array of services to the community including a resource bulletin board, free housing listings and a free lesbian dating service. (3106 NE 64th Ave. 503-280-8080.) (11/01)

**Love Makes a Family Inc.** is a nonprofit agency working for social change and supporting lesbian, gay, bi and trans families. We do advocacy, outreach, education and referrals regarding schools, same-sex marriage, adoption, parenting and more. Metro Parents and Kids Group meets 6-8 pm every second Monday at Augustana Lutheran Church, 2710 NE 14th Ave. A potluck and social is held 6-7:30 pm every fourth Thursday at the same location. Call about Washington County activities. (503-228-3892. lmfam@teleport.com.) (11/01)

**Mentors International** is a group of gay seniors sharing life skills with international college students and serving as advocates, grant sources and nonacademic advisers. We're looking for both students and advisers. (503-735-9425. ncking@ados.com.) (11/01)

**Names Project** Portland chapter provides access and training for organizations to display the AIDS Memorial Quilt. (PO Box 5423, Portland, OR 97228. 503-797-2881.) (11/01)

**Pride Northwest Inc.**, a completely volunteer effort, organizes and produces community forums and the annual Pride celebration. (503-295-9788. www.pridenw.org.) (11/01)

**Metro: Political**

**Basic Rights Oregon** is a pro-GLBT civil rights organization committed to promoting fairness and ending discrimination in the state of Oregon. (PO Box 40625, Portland, OR 97240. 503-222-6151. info@basicrights.org.) (11/01)

**Human Rights Campaign**, the largest national gay and lesbian political organization, lobbies Congress, provides campaign support and educates the public. Portland Steering Committee and Federal Club meet monthly to plan events. (503-244-6951.) (11/01)

**Lesbian Avengers** is a direct-action group dedicated to the survival and visibility of lesbians, bisexual women and trans dykes. (503-452-5408.) (11/01)

**Lesbian Community Project** is a multi-issue, multiracial, grassroots political and fun organization working for social justice and liberation for lesbian, bi and trans women and dykes. (1111 SW 10th Ave. Mailing address: PO Box 5931, Portland, OR 97228. 503-294-7435.) (11/01)

**Old Lesbians Organizing for Change (OLOC)**, a national lesbian organization, now has a chapter in Portland for lesbians 60 and older who are interested in changing the social disease of ageism. (1 pm second Wednesday, 503-286-3575 or 503-331-0415.) (11/01)

**Radical Women** are active in the struggle against bigotry and exploitation. (7 pm second Wednesday, 819 N Killingsworth St. 503-240-4462. nwpdx@gc.org.) (11/01)

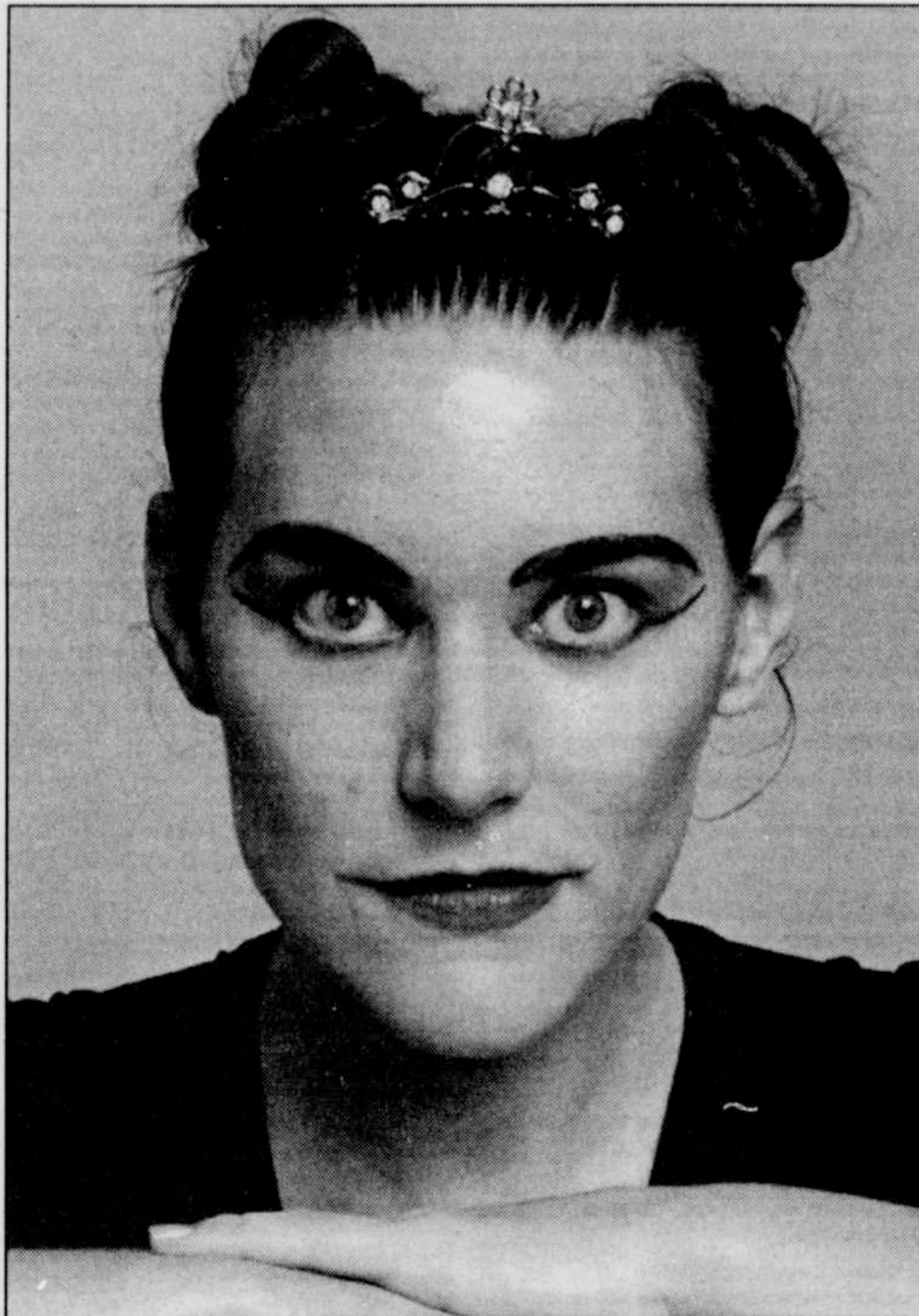
**Rural Organizing Project** is a network of human dignity groups taking action at the local and state level. (PO Box 1350, Scappoose, OR 97056. 503-543-8417. office@rop.org.) (11/01)

**Metro: Professional**

**Lesbians with Vision** is a support group for lesbian business owners. (Deborah 503-777-7171. stopper@prodigy.net.) (11/01)

**Oregon Tradeswomen Inc.** is a nonprofit group dedicated to promoting success for women in the trades through education, leadership and mentor opportunities. Child care provided; everyone is welcome. (6 pm third Thursday, Room 120, State Office Building, 800 NE Oregon St. 503-943-2228.) (11/01)

port and information to gay and lesbian immigrants and their partners and works to change discriminatory U.S. immigration laws. (503-471-1568. PO Box 12526 Portland, OR 97212. lgirtfpx@hotmail.com. www.lgirtf.org.) (11/01)



For ribbeting theater, go see Cecily Overman in the Stark Raving Theatre production of *FrogWoman* Sept. 14 through Oct. 6

**Portland Area Business Association (PABA)** is a professional networking organization serving the lesbian and gay community and those who support our aims and purposes. Monthly events and gatherings. (503-241-2222. www.paba.com.) (11/01)

**Metro: Support**

The Lesbian Cancer Support Network's **Hambleton Project** is a nonprofit organization offering networking and direct services to lesbians with cancer and other life-threatening conditions. (503-335-6591.) (11/01)

**Late Awakenings**, a support group for lesbians who came out later in life, meets monthly at the Lesbian Community Project office. (7 pm first Tuesday, 1111 SW 10th Ave. 503-294-7435.) (11/01)

**Lesbian and Gay Immigration Rights Task Force (LGIRTF)** Portland Chapter provides sup-

port for individuals desiring to explore and express another gender. Cross-dressers, transsexuals and transgender-identifying people meet monthly. (PO Box 4928, Portland, OR 97208-4928. 503-646-2802. nwg@nwgapdx.org. www.nwgapdx.org.) (11/01)

**Parents, Families and Friends of Lesbians and Gays (PFLAG)** provides support, education and advocacy. (7-9:30 pm second Tuesday, First United Methodist Church, 1838 SW Jefferson St. Mailing address: PO Box 8944, Portland, OR 97207. 503-232-7676.) (11/01)

**Portland Bisexual Women** is a support and discussion group for bisexual and questioning women. Women of any age, race or national origin are encouraged to attend. Locations vary. (Discussion: 7-9 pm second Friday, Social: fourth weekend, 503-768-4293. portlandbiwomen@aol.com.) (11/01)

**Rainbow Club** welcomes lesbians, gays, bi, trans and allies to its meetings. (Noon Monday, Clackamas Community College, Kandie Starr, 503-657-6958, ext. 2504.) (11/01)

**Reed College Queer Alliance** is an all-inclusive organization devoted to sexuality issues. It provides support and education to students, faculty and staff to foster better understanding in the larger community. (queeralliance@reed.edu.) (11/01)

**Single Parents by Choice**, a group for men and women, meets on the third Saturday of every month for a potluck social. Child-friendly space. (5-7 pm, Friends Meeting House, 4312 SE Stark St. Betsy 503-692-4639.) (11/01)

**Straight Spouse Support Group** provides support and information for men and women formerly or currently partnered with gay, lesbian, bisexual or trans mates. (7 pm Wednesday, Gil 503-780-9708.) (11/01)

**Women Surviving Abuse Group** meets monthly at the Lesbian Community Project office. (6-7 pm third Thursday, 1111 SW 10th Ave. 503-294-7435.) (11/01)

**Central Oregon: Community**

**Parents, Families and Friends of Lesbians and Gays (PFLAG)—Central Oregon** meets on the third Monday of the month. The group's threefold mission is support, education and advocacy. (6 pm coffee, visiting, browsing the library; 6:30 pm meeting, First Presbyterian Church, 230 NE Ninth St., Bend. 541-317-2334.) (11/01)

**Coastal Oregon: Community**

**North Coast Pride Network** serves the lesbian, gay, bi and trans communities in the Columbia Pacific region; publishes a quarterly newsletter; maintains a resource center, which plays host to board meetings; and presents "Gertrude's Wilde Social Mixer" in Astoria on the third Monday of each month. (Suite 209, 10 Sixth St., Astoria. Mailing address: PO Box 1317, Astoria, OR 97103. Monday social: 5:30-9 pm at Café Uniontown, 231 W Marine Drive, Astoria. 503-338-0161.) (11/01)

**Southern Oregon: Community**

**Abdill-Ellis Lambda Community Center** offers support groups and resources for the sexual minority community and its friends. Comprehensive monthly newsletter, *Prizm*, details local groups and events. (281 Fourth St., Ashland, OR 97520. Mailing address: PO Box 927 Ashland, OR 97520. 541-488-6990. lambdacntr@aol.com. www.aelcca.org.) (11/01)

**Klamath Area Lambda Association (KALA)** is dedicated to promoting awareness, health, understanding and acceptance of gay, lesbian, bisexual and transgender people through education and social activities. \$20 donation for newsletter; no one denied because of inability to pay. (541-273-2838. PO Box 43, Klamath Falls, OR 97601. kalainfo@aol.com.) (11/01)

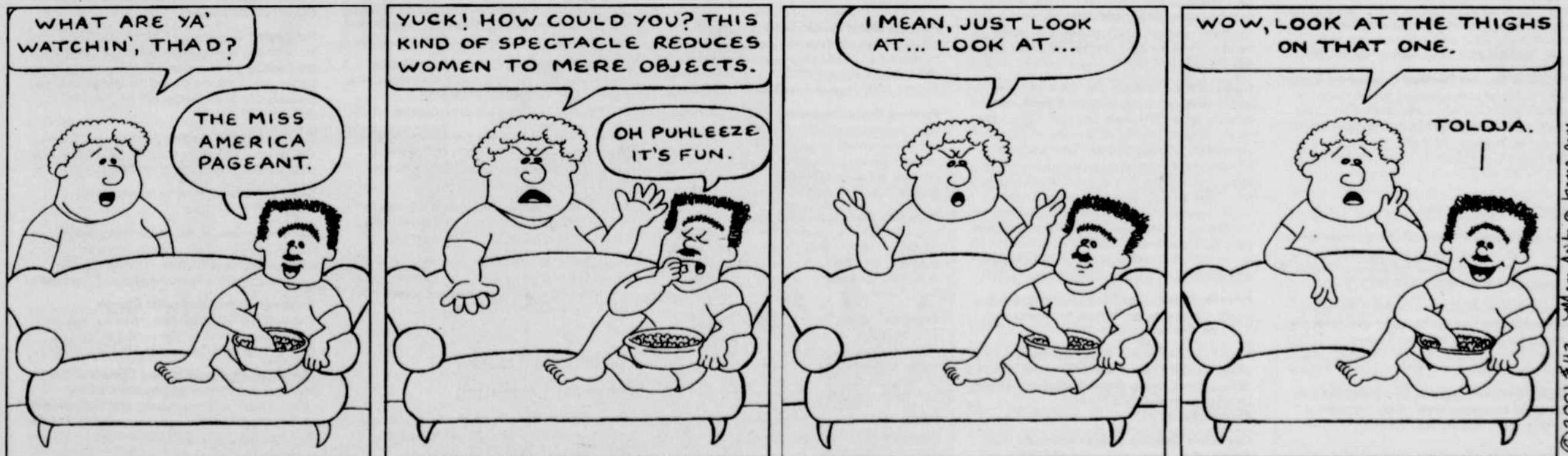
**Washington: Community**

**Love Makes a Family Vancouver Parents and Kids Group**. Everyone is welcome to enjoy a pizza dinner (sliding scale donations accepted but not required), talk and play. Teen Group meets at the same time. (6-8 pm third Monday, Children's Home Society, 309 W 12th Ave. 503-228-3892 or 360-695-1325, ext. 332.) (11/01)

**Parents, Families and Friends of Lesbians and Gays (PFLAG)** provides support, education and advocacy. (7 pm first Tuesday, Lower Level Conference Room, First Congregational Church, 1220 NE 68th St., Vancouver. 360-695-2200. ourclarkcounty.columbian.com/257.) (11/01)

**Sexual Minority Services Project** offers individual peer support by appointment. (360-695-1325, ext. 332.) (11/01)

**THE BOYS NEXT DOOR** by Marc Acito



© 2001 #43 Marc Acito @ Home.com