

**Portland Gay Men's Chorus** is open to singers, support members and volunteers. (503) 460-3689. www.pdxgmc.org. (11/00)

**The Real Connection** is a social gathering for gay men who are artists, writers, musicians or who pursue some creative activity. Monthly potlucks on the second Friday. (Todd) (503) 236-5763. (5/00)

**Rose City Gay Freedom Band** is a concert band open to lesbian, gay, transgendered, bi and supportive musicians and friends. (PO Box 1082, Portland, OR 97207. (503) 790-2170. http://community.oregonlive.com/cc/rcgfb.) (5/00)

**Metro: General**

**Bisexual Community Forum** is an age- and gender-inclusive social, support and education network founded in 1980. Activities include dances, potlucks, field trips and a polyamory interest group. Meetings are held on the second and fourth Wednesdays. (7:30 pm at Utopia Cafe, 3320 SE Belmont St. Laury) (503) 285-4848. (5/00)

**Brother to Brother** is a family of African-American gay and bisexual men dedicated to the empowerment of, and improvement in the quality of life within our community. Activities include FRIENDS, a weekly support and discussion group that meets Wednesdays 5-7 pm. Board meetings every third Monday of the month at 5:30 pm. (Brian, PO Box 3182, Portland, OR 97208. (503) 417-7991.) (5/00)

**Cocksure** is a social group for female-born, gender variant people including FTMs, transguys, genderqueers and significant others. We are based in Portland and welcome folks from Oregon and Washington. For more info about our monthly meetings and e-mail network, call (503) 471-1515. (5/00)

**Dipstick Lesbians and Dykes with Hot Rods** invite women with cool cars to go cruisin' with them. (Rachel) (503) 735-1184. Devoune (503) 289-3104. (5/00)

**First Wednesday Social** is a potluck for HIV+ people and their friends. (Phillip) (503) 234-1811. (5/00)

**Funny Ladies Tea and Posy Society** is a social group for lesbians 35 and over, singles or couples. They meet for a potluck on the third Saturday of each month and take camping trips during the summer. Monthly newsletter is \$9/year. (503) 232-9714. (5/00)

**Gentle Giants of Oregon** is a group dedicated to providing an accepting, social environment for chubby men, and the men who like them that way. (503) 241-4535 or www.chubnet.net/gentlegiants. (5/00)

**Hoodland/Mount Hood womyn** are building a personal and professional community. Alcohol and drug-free social activities and networking. (Kim) (503) 701-8302. (5/00)

**Imperial Sovereign Rose Court of Oregon** is a nonprofit social organization dedicated to raising money for charities within the gay, lesbian, bisexual and trans community. ISRC Event Hotline lists upcoming events. (503) 306-0700. ISRC@aol.com. www.geocities.com/WestHollywood/Heights/7887. (5/00)

An informal **Leather Night** and **Red Hanky Social** are held the first and third Friday of each month. (9 pm-12 am at the Dirty Duck Tavern, 439 NW Third Ave. (503) 224-8446. PDXSaltyDg@aol.com) (5/00)

**Jewish Gay Men's Group**—call for meeting time and place. (503) 246-5939. efrainlev@aol.com. (5/00)

**Lair Dungeon** hosts monthly discussion groups and separate men's, women's and panssexual B/D/S/M parties. Refer to web site for schedule. (www.hawkenet.com/lairofthewolf.html.) (5/00)

**Lesbians Enjoying the Sciences** is a fun-loving group of women who enjoy exploring all aspects of the environment. Activities include bird watching, nature walks, archaeology, rock collecting, camping, kayaking, star gazing, an occasional "lecture" and a monthly planning potluck. No experience necessary. (6:45-8:30 pm second Thursday planning meeting. (503) 639-8936 or (503) 466-0058 or e-mail to lesprnw@aol.com.) (5/00)

**Lesbian social group for women 50 and over** meets on the third Saturday of the month. (4-7 pm. (503) 281-4424, (503) 331-0415.) (5/00)

**Long Yang Club—Portland Chapter**, a social group for Asian gays and lesbians and their friends, meets at 8 pm on the first Wednesday and third Sunday of each month at 3 Friends Coffeehouse. (503) 963-1841. (5/00)

**Lulu's Pervy Playhouse** is a social group for self-identifying women who are into SM. Play parties are held on the second Saturday of the month. (lululist@hotmail.com, www.jp.net/wynter/luluspage.html, (503) 231-3992.) (5/00)

**Northwest Gender Alliance** is a social and support organization for cross-dressers and transsexuals. Monthly open meetings and socials. (PO Box 4928, Portland, OR 97208. (503) 646-2802. www.teleport.com/~nwga.) (5/00)

**Oregon Bears** is a social group for bears and their

admirers. Newsletter, activities and monthly social gatherings. (503) 240-2813. www.oregonbears.org. (5/00)

**ORGAN (Oregon Regional Gay and Naked)** is a social club for nude men who enjoy being gay. Monthly potlucks and events. Guests are invited to attend two events before deciding on membership. (ORGAN, PO Box 14174, Portland, OR 97293-0174.) (5/00)

**Portland Bisexual Alliance** hosts social and political events for bisexual and bi-friendly people. Organizes Portland Bi Day rally and publishes calendar of bi events. Mixed gender discussion groups are held 7 pm on the first and third Fridays of the month at Laughing Horse Books, 3652 SE Division St. Open to all. (503) 775-9717. pba@biportland.org. www.biportland.org. (5/00)

**Portland Bisexual Women** is a support and discussion group for bisexual and questioning women. Women of any race, age or national origin are encouraged to attend. (7-9 pm second Friday at Common Ground Wellness Center, 2926 NE Flanders St. 5:30-7:45 pm fourth Sunday at It's My Pleasure, 3106 NE 64th Ave. \$2 donation. (503) 283-6433.) (5/00)

**Portland Leather Alliance** is a panssexual, not-for-profit organization dedicated to fostering a positive community for safe, sane, and consensual alternative adult sexualities in general and S/M/leather/fetish in particular. (503) 727-3148. www.pdxleatheralliance.org. (5/00)

**Portland Metro Prime Timers** is a social group for men. (PO Box 5884, Portland, OR 97228. (503) 244-7550 or (360) 254-1718. pdxprimetimers@yahoo.com.) (11/00)

major gardening projects in members' gardens, holds social events and visits various gardens and nurseries throughout the year. (Nicki, (503) 287-6120.) (5/00)

**Out Dancing** teaches partner dancing for same-sex couples at Sally Mack's School of Dance. Classes for different dance styles start the first Friday of each month. (503) 236-5129. (5/00)

**PDX Rain Riders** is Portland's gay and lesbian motorcycle club. (503) 641-6452. www.gaypdx.com/rainriders. (5/00)

**Portland Gay and Lesbian Community Bowling Association** bowls Sundays at 4 pm at Hollywood Lanes, 40th Ave. and Halsey St. (PO Box 80002, Portland, OR 97280-1002. (503) 293-0438. BOWLpdx@aol.com. http://members.aol.com/BOWLpdx/pcba.html.) (5/00)

**Rosetown Ramblers**, Portland's gay and lesbian square dance club, dances at mainstream, plus and advanced levels. (PO Box 5352, Portland, OR 97228-5352. (503) 234-9944. www.rdrop.com/users/ramblers.) (5/00)

**Ski Out** is a LGBT ski club with outings twice monthly to Mt. Hood and other destinations. Join us for downhill and cross-country skiing, snow boarding or lodge lounging. (503) 973-3441. www.skiout.org. (5/00)

**Team Portland Tennis Association** plays every Sunday 8 am-noon at the University of Portland. Women and men players of all skill levels are welcome. (Alex Godinez (503) 282-7210.) (5/00)

**Team Quest**, the athletic and exercise program of Project Quest, offers individual and group, indoor and outdoor physical recreation opportunities for people living with HIV and AIDS. (503) 493-0288. (5/00)

**Southern Oregon: Social**

**Abdill-Ellis Lambda Community Center** hosts social events and groups. Call for schedule. (Mailing address: PO Box 927 Ashland, OR 97520. Location: 281 Fourth St., Ashland, OR 97520. (541) 488-6990. lambdacntr@aol.com, www.aelcca.org.) (5/00)

**Washington: Social**

**MenTalk of Vancouver** holds a social on the first Monday and a discussion group on the third Monday of each month at 7 pm. (360) 576-6595. www.redrival.com/MenTalkofVancWA. (5/00)

**SW Washington Gay and Lesbian Socialites** is a Vancouver-based organization whose members get together regularly for social events and activities. The Socialites was organized to build a sense of community among gay men and lesbians in the Portland/Vancouver area. Newsletter available by e-mail or USPS. (360) 735-1901. Socialites@aol.com. (11/00)

**The Thorny Roses** is a social group for lesbians, primarily over 45, who live in the Vancouver/Clark County Wash. area. Please contact Judy. (360) 906-1763. e-mail: Judy342@cs.com. (11/00)

**Willamette Valley: Social**

**Eugene Frontrunners/Frontwalkers** is a gay/bi/lesbian athletic and social club for recreational runners and walkers. Meets at 9 am every Saturday at the corner of 15th and Agate. All are welcome. (Jim (541) 484-9894.) (5/00)

**GALA (Gay and Lesbian Alliance)** meets at Lane Community College, Eugene. (541) 741-4501, ext. 2336. (5/00)

**Gay and Bisexual Men's Group** meets every Wednesday. (7-8:30 pm at 1165 NW Monroe St., Room 121, Corvallis. (541) 758-8197.) (5/00)

**Gay Male Statewide Contact Group** meets monthly to enjoy the great outdoors, good food and gay camaraderie. Find friends from and in your local area. Carpools available. (Damon, P.O. Box 231, Foster, OR 97345. (541) 367-2817. Send SASE for details.) (5/00)

**Gay Men's Discussion Group** meets Mondays from 7:30-9 pm at the Koinonia Center, 1414 Kincaid in Eugene. (Hank (541) 484-6259 or Trent at tseager@hivalliance.org.) (11/00)

**Lane County Men's Health Network** offers social events, retreats, workshops and trainings for bi, gay, trans, queer men. Community calendars and mailings. Training and networking men to build community from a grass-roots perspective. (1966 Garden Ave., Eugene. (541) 342-5088. Ext. 23. tseager@hivalliance.org.) (5/00)

**Lesbian, Gay, Bisexual, and Transgender Education and Support Service Program** offers a variety of drop-in groups at the Koinonia Center, 1414 Kincaid St., Eugene. Call for schedule. (541) 346-1134. (5/00)

**Marionberry Salon**, formerly the Coalition to End Bigotry Book Group, meets monthly in Salem for potlucks and discussion of books touching on lesbian, gay or bisexual experience. (Cary (503) 363-6036. caryandker@aol.com.) (5/00)

**The Lesbian Connection (TLC) Lunch Bunch** meets at 11 am every Sunday morning at a Eugene bakery. All women welcome. (Bonnie (541) 683-2793.) (5/00)

**Metro: Physical Recreation**

**The Adventure Group**, Portland's gay and lesbian outdoors group, organizes a variety of activities and social events including hiking, skiing, mountain biking, camping and rafting. (503) 452-5680. www.adventure-group.org. (5/00)

**Border Riders Motorcycle Club**, the largest motorcycle club for gay men and friends in Western Canada and the Pacific Northwest, hosts day runs and camping events. (bcbiker@yahoo.com, www.borderriders.org.) (5/00)

**FOREST Group** outings are cooperative adventures for women. Participants are responsible for providing their own equipment and choosing outings appropriate for their skill and fitness level. All skill levels welcome. (503) 286-5382. www.odin.cc.pdx.edu/~gjm) (5/00)

**K-9 Club** is a group of kindred folks and their dogs who meet to hike and talk in Portland parks on the second Sunday of each month. (503) 285-2986. (5/00)

**Lesbian Garden Club** is a social group that tackles

**Community Crossword**

By Q Syndicate

"For Lovers of Lane"

1	2	3	4	5	6	7	8	9	10	11	12	13		
14				15				16						
17				18				19						
20				21				22						
23					24					25	26	27		
				28	29			30		31				
32	33	34	35			36			37					
38					39			40	41		42			
43				44				45			46			
47					48	49		50						
51					52			53		54	55	56	57	58
					59					60				
61	62	63				64					65			
66						67					68			
69						70					71			

COPYRIGHT 2000 BY Q SYNDICATE

**ACROSS**

- 1 Decided not to swallow
- 5 Muslim holy man
- 9 Upright member
- 14 Oral refuser
- 15 Leon Uris novel \_\_\_ 18
- 16 Over the top in the middle
- 17 Strong as \_\_\_
- 18 Bedfellow
- 19 Put the move on
- 20 Nathan did Snowbell's voice in this movie
- 23 Hung like a \_\_\_
- 24 With one's socks blown off
- 25 Binge
- 28 Foucault's Pendulum author Umberto
- 30 S and M regulation?
- 32 Nathan did Timon's voice in this movie
- 37 Practices autoeroticism, e.g.
- 38 Pennsylvania lake city
- 39 Type of Indian or orange
- 42 Hair coloring
- 43 City in India that sounds like a sandwich shop
- 45 Nathan played Robin Williams's lover in this movie
- 47 12th of a foot
- 50 Merry or like "Mary"
- 51 Beatty of Deliverance
- 52 Band members blow his horn

- 54 "Homosexuality is not a four-letter word," for one
- 59 Nathan was in this 1992 Broadway revival
- 61 Handle for a tool
- 64 Nathan wore one in L/V/C!
- 65 "\_\_\_ Her Go" (Frankie Laine song)
- 66 French town, often after 50-Across
- 67 Chief Norse god
- 68 Sixty-\_\_\_
- 69 Arouses
- 70 Adams of TV's *The Rebel*
- 71 Some think it determines sexual orientation

**DOWN**

- 1 Break into smithereens
- 2 Kind of bean or Ford
- 3 Love, to Genet
- 4 State of the *Best Little Whorehouse*
- 5 "\_\_\_ my wit's end"
- 6 Thousands of thousands
- 7 \_\_\_ the Family
- 8 Washer of the lonely repairman
- 9 Limbs spread apart
- 10 A reed player gives it a blow
- 11 Keanu's role in *The Matrix*
- 12 Language suffix
- 13 Cherry color
- 21 Stink to high heaven
- 22 US Airways rival
- 25 Architect Morgan
- 26 "Merrily, we roll \_\_\_"
- 27 Beau \_\_\_
- 29 AFL's partner
- 31 It prepares officers not to ask or tell: Abbr.
- 32 Gave false hopes to
- 33 "Goodnight" girl
- 34 Prepared to rub the right way
- 35 Grape drink favored by Radar O'Reilly
- 36 Indulge orally
- 40 Like 9-Across, to the owner
- 41 Steinern pitched it?
- 44 Covers with a policy
- 46 Two in a relationship
- 48 Like a tease
- 49 John who played Loner in *Myra Breckinridge*
- 53 Native of Arabia
- 55 Having sex, with "it"
- 56 Kate's sitcom partner
- 57 Outfielder Burke who came out
- 58 First name in cosmetics
- 59 Grandpa Walton actor
- 60 Slam through the hoop
- 61 Letter's second after-thought
- 62 "\_\_\_ It" (Weird Al's Jackson parody)
- 63 Like a menage a trois (prefix)

ANSWERS ON PAGE 50

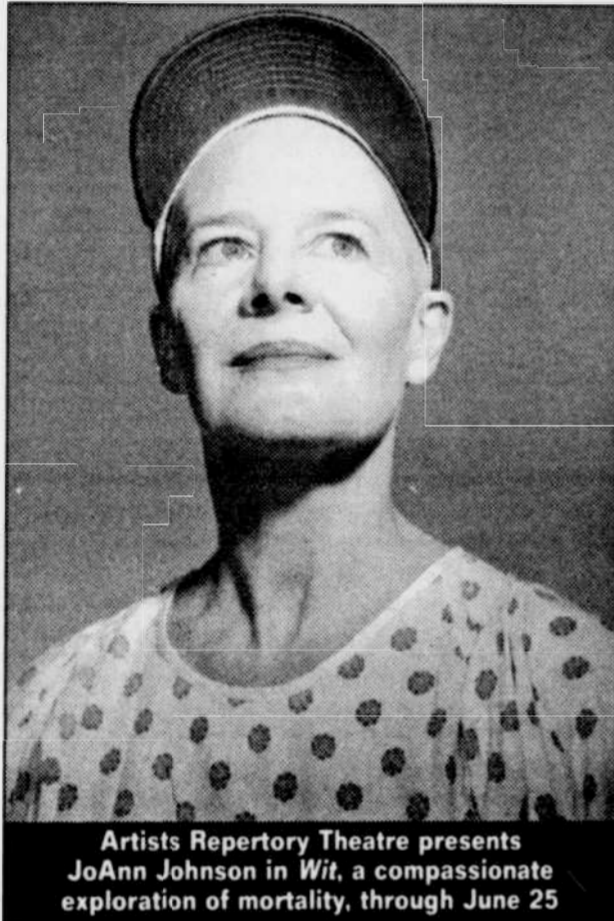


PHOTO BY OWEN CAREY

Artists Repertory Theatre presents JoAnn Johnson in *Wit*, a compassionate exploration of mortality, through June 25