



Corner of Sandy Blvd. & NE 64th  
3106 NE 64th  
Portland, OR 97213

*Come bask  
in the elegance  
of romance*

*It's My Pleasure*

A Place of Romantic Invention

503-280-8080  
www.teleport.com/~pleasure

A Professional Team Approach to Palm Springs Area Real Estate

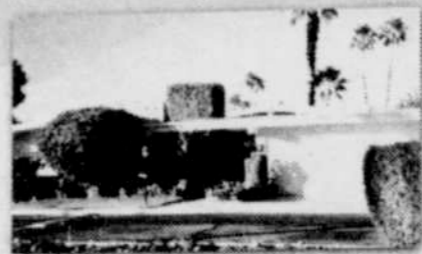
## The Gurney Group

### Best of the Canyon Estates Condos

This superb Canyon Estates Drive home boasts two very large bedrooms, convertible den, entertainment center, and a bright, cheerful, high-ceilinged living room where upgrade amenities abound. The lush landscaping is manicured and includes magnificent fruit trees off the extended, open back porch. A "move in" home!



Tim Gilbert Jim Gurney



~~\$285,000~~ \$269,500

Houses & Condos from \$45,000

Tarbell  
REALTORS



Preferred  
PROPERTIES

(760)322-1711 x336 • www.thegurneygroup.com

## WENTWORTH



#00459

2000 4 Dr Blazer LS Loaded

Sale \$22,499<sup>00</sup> MSRP \$27,120<sup>00</sup>

After \$1,500<sup>00</sup> Rebate



#00637

2000 4 Dr Tracker LSI

Sale Price \$16,699<sup>00</sup> MSRP \$19,786<sup>00</sup>

After Rebate of \$1,500<sup>00</sup>

Pre-owned

99 Chevy Tracker 4x4 #4224 \$14,978	96 Subaru Outback # 4213 \$14,978
94 Chevy Blazer 4x4 # 4186 \$9,978	99 Chevy Prizm #4223 \$10,978
98 Chevy Blazer LS 4x4 # 4232 \$19,978	95 Chevy Tahoe LS #4234 \$19,978
98 Subaru Foresters AWD # 4149 \$18,478	99 Chevy Blazer LS #4222 \$21,978
96 Nissan Altima GXE # 4196 \$8,978	99 Olds Alero GL #4225 \$13,978



**WENTWORTH  
CHEVY TOWN**

Expires close of  
business 3-30-00

107 SE Grand • 4 Blocks South of the Convention Center • 503-232-2000

Are you totally satisfied with your  
Insurance coverages?

Does it meet your lifestyle needs?



OFFICE  
675 0800

FAX  
675 0807

Home • Auto • Life  
Business • Disability  
For the readers of *Just Out*

Call and find out how we can help you  
Home and office visits  
Evening & Weekend appointments available  
**Call Paul, Randy or Woody**

## Homes for a Lifetime

### Specializing in Close-in Homes

CONTEMPORARY HOME IN MONTAVILLA - IT'S A 10! **New** PANORAMIC VIEWS OF MT HOOD Entertainers Home! \$369,000  
3 bedrms, 2 baths, like new, fabulous interior, mud room, decks, dog run, slider to yard. Vinyl thermal windows. Eating bar & formal dining. Double car garage. Under \$170,000. NE Portland off Glisan.

Fabulous southwest home w/ craftsman features, hardwoods, lg rooms, built-ins, fireplace, updated kitchen, formal dining open to kitchen, 2 full decks facing east, 3 bedrms, 3.5 baths. Full basement, minutes from running/walking trails & downtown.

Working as a 'Buyers Agent' to represent you in the purchase of your dream home...  
Call now! 495-5774 Direct.

See my other fine listings in the Classified Ads.

—CELIA J. LYON—

Sales Associate  
(503) 287-8989 x5774  
(503) 786-4959  
Pager: 920-8403 Mobile: 260-6231  
Fax: 284-1618



Equity  
Group, Inc.  
EST. 1973

