

# Classified

## BODYWORK

### STRONG HEALING HANDS

creative focused work  
complete peaceful  
relaxation

mark larsen l.m.t.  
professional  
swedish massage  
231-6577



### Woody Clarke L.M.T.

Sensual non-sexual massage

Discounted times available

Candles, Incense & Heat Packs

Big strong hands

In or Out

320-2168/299-0327 pgr



### Brian Tension, LMT

An Intuitive Combination of  
Swedish & Deep Tissue Massage

Evening Hours/SE Location

230.7703

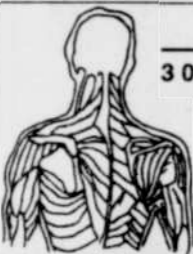
www.geocities.com/hotsprings/sauna/4688



### J. Adrian Dee, LMT

503-777-8288

Specializing in  
Chronic Pain Relief



### Tim, LMT

309-2618/232-7994

fullbody massage for your  
health & pleasure

male clientele

graduate of: Body Electric School of  
Massage, and Oregon School of Massage

Bob Terry  
285-9018  
OUTCALLS & CHAIR  
DEEP TISSUE

Tim Silva  
232-7994  
BODY ELECTRIC  
REIKI

## FOUR WINDS MASSAGE

Relaxing, Intuitive, Therapeutic Massage

Downtown Studio  
Fine Arts Bldg.  
10th & Morrison

Bob Thiman  
287-2601  
RELAXATION  
STRESS REDUCTION

David Bennett  
233-1344  
REGISTERED NURSE  
ASTORIA STUDIO

### Massage for Men

Treat yourself to a complete full body massage  
by a friendly experienced therapist.

Downtown location/outcalls to home/hotel

Days/evenings/weekends/some day appts.—often available!

Cliff King, L.M.T.  
503-936-5135

## BUSINESS OPPORTUNITIES

HERSHEYS VENDING ROUTE. 50 prime loca-  
tions. \$800-\$1200 solid monthly income. Cost \$2995.  
www.vendingroutes.com. 1-888-229-8283. (1/7)

## CAREER COUNSELING

CAREERMOVE. I help people get moving! Andy  
Huckfeldt, Licensed Professional Counselor  
(503) 284-6515. careermove@uswest.net. (10/15)

**Money is power.  
Support queer business.**

## CATERING

### BITE THIS!

"Culinary Emergency Specialists"

- Personal Chef Services
- Intimate Individualized Catering
- Wine and Spirit Guru's

Karen Voss and Renee Crawford  
503.287.9998

## CEREMONIES



Our relationships  
are works of art!

sacred ceremonies of union  
spiritual direction for couples

Reverend Ashley McCormack, Ph.D.  
503-977-6507 gather@hevanet.com

## CHIROPRACTORS

People and  
Pets too!



2625 SE Hawthorne  
Portland, OR 97214  
Voice or TDD  
(503) 236-4400



Dr. Mary Mandeville,  
Chiropractic Physician

Member: American Veterinary Chiropractic Association

## COMMERCIAL SPACE

### GOOSE HOLLOW OFFICE

Unique brick walled 1000sf daylight office looking into  
large courtyard 2 blocks from Westside lightrail  
\$775/month: (503) 452-6714. (1/7)

## COMPUTERS

## COMPUTER DOCTOR.

This Doctor makes house calls.

PC or Mac  
A+ Certified Technicians

- ◆ Home or Business Systems
- ◆ On Site or Carry In Service
- ◆ Service Contracts
- ◆ Parts/Supplies

503.297.1011

8122 SW Beaverton Hillsdale Hwy - Portland  
www.computerdror.com

quality services small  
business can afford

XianJiro WebWorker  
upgrades • support • webdesign • troubleshooting  
making IT work for you

thomas 503.761.7480 www.xjs.com

## COMPUTERS



### Home PC Support

On-site support  
Tutoring & Training  
Troubleshooting  
Hardware & Software  
Upgrades & Installations  
Custom PC Solutions

Gregg Moreland  
(503) 288-2650

### Let us create your Business Website

We're experts at introducing small  
businesses to the web. We'll coordinate  
your website with your marketing  
strategy. You'll be surprised how little it  
costs. Contact us for a free no-obligation  
consultation. --Dave Ressler

www.nettenna.com



503-335-9363 dave@nettenna.com

## COUNSELING

BUDDHIST APPROACH: profound insights,  
sweeping away barriers, gay affirming.  
Patrick Finneran, M.S., (503) 860-4845. (2/4)

### Marlene Phillips, MS, LPC Certified Hypnotherapist

- chronic illness
- survivors of abuse
- relationship issues

offering LPC licensure supervision  
503-957-1133 License # C1103

### KRIS MOORE, RN, MS

Individual and Family Therapy  
Women's and Children's Issues

Creating a better life through channeling your  
own inner wisdom.

3308 N.E. Peerless Ct.  
Portland, Oregon  
503-331-1819



Talk with someone  
who understands

- Gay, lesbian relationships
- Coming out
- Religious abuse
- Family conflict
- Substance abuse



Promoting  
Psychological  
Health and  
Spiritual Growth

Ann Beattie, M. DIV., Sharon Bowland, LCSW  
Dan Mills, M.A., Lori Whittaker, MSW  
281-3318

Eight offices in Metro area



Specializing in:

- Depression
- Addictions
- Couples

Free Consultation

Dean Sidwell, MSW  
(503)788.9440

## COUNSELING

### Melinda K. Howard, LCSW

Licensed Clinical Social Worker

Specialties Include  
Lesbian/Gay/Bisexual Concerns

Individuals and Couples

503-241-2239

Some Insurance Accepted

Sliding Fee

### Carol A. Carver Ph.D.

Clinical Psychologist

Specializing in Lesbian/Gay  
Clients since 1984

Pioneer Plaza Building  
305 SW C, Suite 4  
Corvallis, OR 97333

Medical Insurance Accepted  
(541) 757-2066

### LANEY KIBEL, LCSW PSYCHOTHERAPIST

(503) 228-6710

- experienced
- positive
- effective

### Serena Barton M.S.

Licensed Professional Counselor

Individuals and Couples

"Art of Life" Groups

22 Years Experience

(503) 226-7803

www.inctarena.com/~seredot



### Anna B. Ingre, M.A.

Licensed Professional Counselor

Lesbian/Gay Issues • Spirituality  
Women's Issues • Self-esteem  
Abuse Survivors • ACOA Recovery  
Life Changes and Transitions

(503) 241-7254

### KATHARINE M. DOEL, MSW, ACSW

Licensed Clinical Social Worker

Individuals and Couples

891 NW Grant Ave., Corvallis, OR 97330

(541) 752-7042



### Patty Newland, MSW

Licensed Clinical Social Worker

Together, we can create  
a nurturing, therapeutic  
environment where you can  
safely push your growing edge.

(503) 299-4948

2311 E. Burnside #204, 97214

Promote your business here!  
Call 236-1253.