

Willamette Valley: Community

5015 COYOTE is an association for sex workers in Eugene. (PO Box 12244, Eugene, OR 97401.) (11/99)

AFTER 8 works for political change and provides information and referral for lesbians, gay men, trans and bisexuals in Benton and Linn counties and sponsors an annual Harvey Milk Awards Dinner in November. (7 pm second Tuesday, 101 NW 23rd St., Corvallis, PO Box 1828, Corvallis, OR 97339. (541) 752-8157.) (5/00)

Imperial Sovereign Court of the Willamette Empire meets the first and third Tuesday of each month at 7:30 pm. (Bob (503) 371-8395, Lydia, Imperial Crown Princess IX (503) 463-8585.) (11/99)

Lesbian and Gay Parenting Group, for parents of children ages 0-3 years, meets the second Saturday of each month in Eugene. (Aqune: (541) 344-5847.) (5/00)

Parents, Families and Friends of Lesbians and Gays (PFLAG) provides support, education and advocacy. (6:45 pm third Monday at First Congregational Church on E 23rd Ave., Eugene. (541) 346-4239.) (11/99)

Men's Support Group, sponsored by Sweet Spirit Metropolitan Community Church (MCC), meets every Thursday at 7 pm to share concerns, discuss gay issues, and support the MCC community. Open to the public. (David: (503) 363-4828, Joseph: (503) 363-3392.) (5/00)

HEALTH

Metro: Anti-violence

Bradley-Angle House provides emergency shelter for female-identified domestic violence survivors and a support group for women battered by women. ((503) 232-7805, (503) 289-6869 ext. 11.) (11/99)

Clackamas Women's Services offer shelter, support and resource referral services for survivors of domestic and sexual violence. (Office: (503) 722-2366, crisis line: (503) 654-2288.) (11/99)

Family Center Outreach Office, a program of Volunteers of America located in Southeast Portland,

relationship. Free, confidential and safe. ((503) 238-0780.) (11/99)

Metro: Mental Health

Helios Counseling offers mental health services to the lesbian, gay, bisexual, and trans communities. (525 NE Oregon St., Suite 220, Portland, OR 97232. (503) 238-0780.) (5/00)

Metro: Recovery

Live and Let Live Club holds 12 step meetings and social activities for the lesbian and gay recovery community. Call for current meeting times and activities. (2940-A SE Belmont St. (503) 238-6091.) (11/99)

The Lunch Bunch hosts AA meetings for gays and lesbians, but is open to everyone. Meetings daily at noon except Sundays at 1 pm. (Metropolitan Community Church of Portland, 2400 NE Broadway, enter on the north side of the building.) (5/00)

Rainbow Al-Anon meets twice a week: Saturdays at 5:30 pm at the Alano Club Board Room, 909 NW 24th Ave. (at Kearney St.); Thursdays at 6 pm at the MCC Church, NW 24 Ave. and Broadway. ((503) 222-5756.) (5/00)

Willamette Valley: Health

Womenspace provides a 24-hour hot line and shelter for women and children who have been abused physically, sexually, or emotionally. Also hosts a lesbian and bisexual women's support group. (Crisis: (541) 485-6513, business: (541) 485-8232, lesbian alliance: (541) 302-2417.) (11/99)

SOCIAL

Metro: Arts & Music

First Wednesday Social is a potluck for HIV+ people and their friends. (Contact Phillip at (503) 234-1811.) (5/00)

Metro: General

Bisexual Community Forum is an age- and gender-inclusive social, support and education network founded in 1980. Activities include dances, potlucks, field trips and a polyamory interest group. Meetings are held on the second and fourth Wednesdays. (7:30 pm at Utopia Cafe, 3320 SE Belmont St. Laury (503) 285-4848.) (11/99)

Brother to Brother is a family of African-American gay and bisexual men dedicated to the empowerment of, and improvement in the quality of life within our community. Activities include FRIENDS, a weekly support and discussion group that meets Wednesdays 5-7 pm. Board meetings every third Monday of the month at 5:30 pm. (Brian, PO Box 3182, Portland, OR 97208. (503) 417-7991.) (11/99)

Dipstick Lesbians and Dykes with Hot Rods invite women with cool cars to go cruising with them. (Rachel (503) 735-1184, Devienne (503) 289-3104.) (11/99)

First Wednesday Social is a potluck for HIV+ people and their friends. (Phillip (503) 234-1811.) (5/00)

Gentle Giants of Oregon is a group dedicated to providing an accepting, social environment for chubby men, and the men who like them that way. ((503) 241-4535 or www.chubnet.net/gentlegiants.) (5/00)

Hoodland/Mount Hood womyn are building a personal and professional community. Alcohol and drug-free social activities and networking. (Kim (503) 701-8302.) (11/99)

Imperial Sovereign Rose Court of Oregon is a nonprofit social organization dedicated to raising money for charities within the gay, lesbian, bisexual and trans community. ISRC Event Hotline lists upcoming events. ((503) 306-0700, ISRC@aol.com, www.geocities.com/WestHollywood/Heights/7887.) (11/99)

An informal **Leather Night** and **Red Hanky Social** are held the first and third Friday of each month. (9 pm-12 am at the Dirty Duck Tavern, 439 NW Third Ave. (503) 224-8446, PDXSaltyDg@aol.com.) (5/00)

Jewish Gay Men's Group—call for meeting time and place. ((503) 246-5939, eframlevi@aol.com.) (5/00)

Lair Dungeon hosts monthly discussion groups and separate men's, women's and pansexual B/D/S/M par-

OutSpoken

On a recent edition of *The Late Late Show*, host **Craig Kilborn** reported: "Presidential hopeful John McCain said recently that 'someday there will be a gay president.' A president that likes other presidents...this is something that at least 8 to 10 percent of Americans can get behind.... What American wouldn't be proud to stand up tall, stick out his chest and salute first lady Bruce?"



Jon Stewart

Jon Stewart, host of Comedy Central's *The Daily Show*, had his tongue firmly planted in his cheek when he reported the news that Chelsea Clinton is expected to take over some first lady duties for her mom while she's off campaigning. "There is a precedent—Anna Roosevelt was a substitute hostess for her father, FDR, when her mother, Eleanor, would travel across the fields of Pector, to the town of Mons, along the River Labia," he said.

In Atlanta's *Etcetera Magazine* the Pet Shop Boys' **Neil Tennant** opened up about his sex life. "I wouldn't say I was a slut," he said, "but around 16, 17, I used to have sex with basically all of my friends, both male and female, sometimes at the same time! It was the early '70s, and we were all obsessed by decadence! It was David Bowie, Lou Reed, Cabaret...divine decadence, darling."

The newly-svelte **Delta Burke** acted as auctioneer at a recent fund-raiser for a crisis hot line for gay youth. According to Liz Smith in the *New York Post*, Burke bid on an all-female Mediterranean cruise, then started to worry: "If nobody else coughs up another bid, it's just gonna be me and a boatload of lesbians cruising the Greek isles. I hope my husband understands it's for charity!"



Dan Savage

Syndicated bad boy **Dan Savage** spouted off recently to the *Ottawa Sun*: "I'm an Irish Catholic fag from Chicago. What do I have in common with a Polynesian lesbian immigrant? There's this infantile notion that there is such a thing as a gay community, and that they all feel and think the same way about everything."



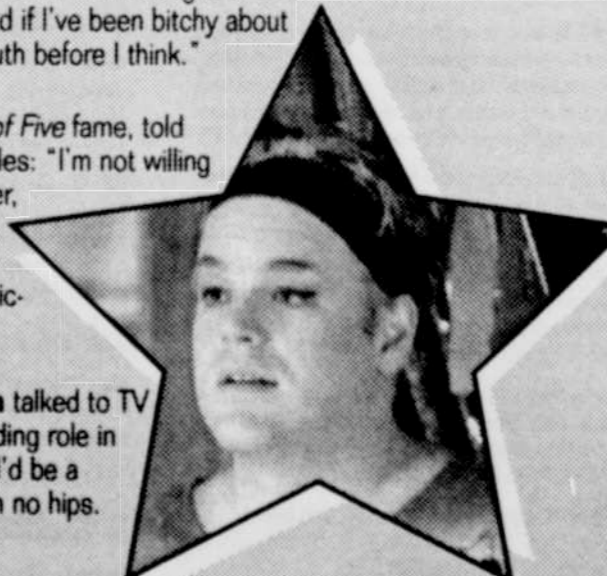
Sandra Bernhard

Actress and naughty girl **Sandra Bernhard** isn't afraid to say it like she sees it, either, in *Fab* magazine: "There will come a day when Anne Heche will be straight again. Gay men are different. If they've been straight and turn gay, they're gay, honey. But for chicks it's different, especially if they're in show business. Even when they're eating your pussy, they're still straight. I'm just looking out for Ellen. Believe me, I'm concerned for her. Because when the shit goes down, it's not gonna be pretty."

Actor **Matt Damon** is still trying awfully hard to put to rest speculation about his sexual orientation. As he told *The Advocate*: "The question of whether Ben [Affleck] and I are gay is so awkward in a lot of ways. There is no real right way to answer it without offending somebody. It's offensive to just deny it fiercely, as if there would be anything wrong with it if we were a couple. That would be offensive to the people I grew up with. I don't want to be that person. At the same time, I can't say it's true because it's not."

According to Yahoo News, singer **Boy George** is also trying to set the record straight: "There's a rumor going round that I outed George Michael—he's a grown man, I'm not responsible for what he does. I think he's a great singer, I think he's a great artist, and if I've been bitchy about him, I'm sorry. I often open my mouth before I think."

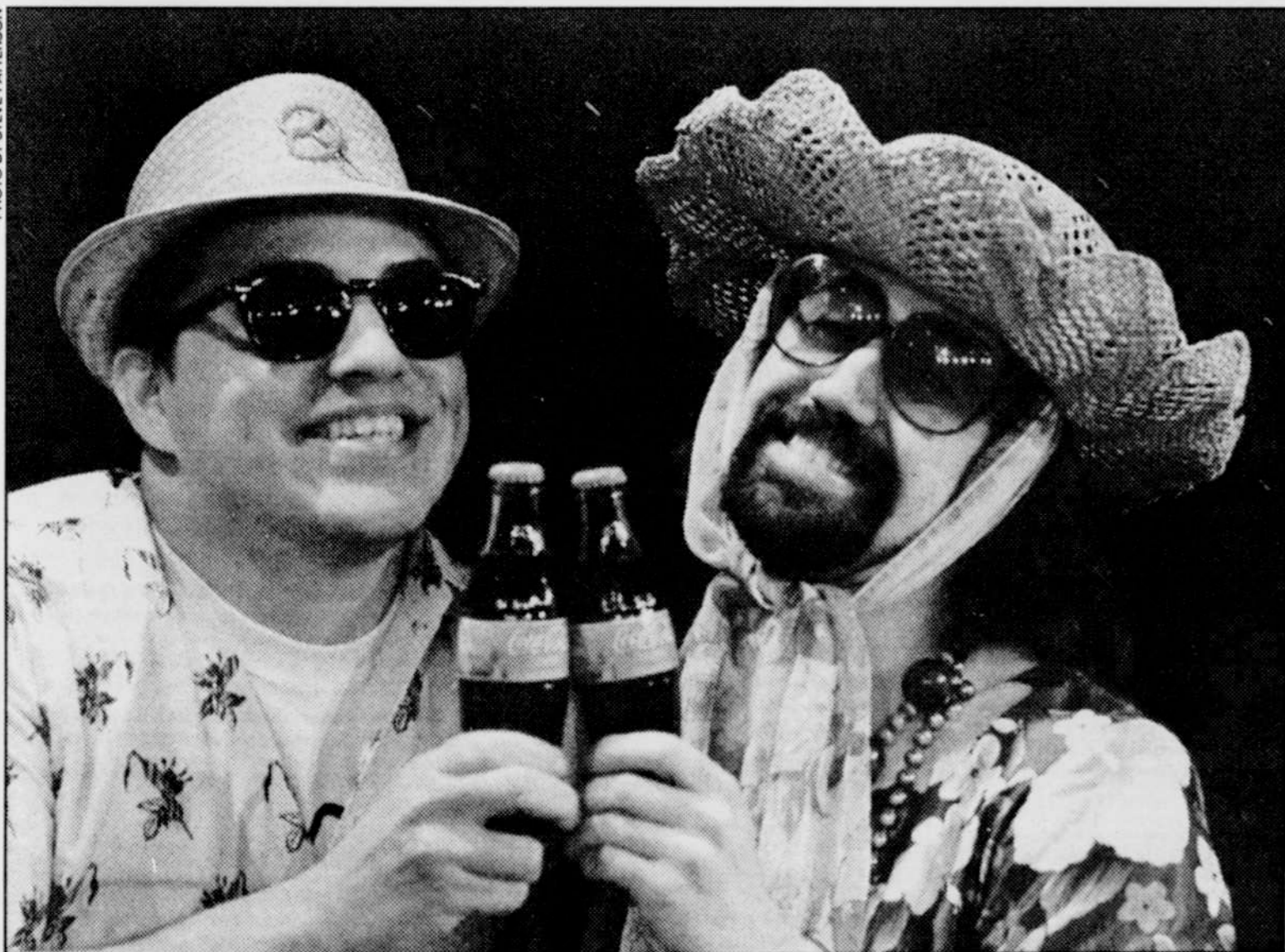
Out actor **Wilson Cruz** of *Party of Five* fame, told *Teen People* about his choice of roles: "I'm not willing to do a stereotypically gay character, like the screaming queen. I want my characters to be life-affirming people who have strength. Never victims."



Philip Seymour Hoffman

Actor **Philip Seymour Hoffman** talked to TV Guide Online about his gender-bending role in the film *Flawless*: "I never thought I'd be a knockout. I'm a 200-pound guy with no hips. What am I going to do?"

Compiled by Oriana Green



Rafael Untalan and Joshua Westhaver learn *The True History of Coca-Cola in Mexico*, which opens Jan. 21 at the Miracle Theatre

offers support groups and drop-in services to women and children who are survivors of domestic violence. (Natalie (503) 771-5503.) (11/99)

Portland Women's Crisis Line announces a new, confidential **support group for gay and bi men** who have been or who are being abused by their male partners. (For more information, leave a message for Craig at (503) 232-5103.) (11/99)

Portland Women's Crisis Line operates 24 hours a day. Interpretation services are available for women who speak limited or no English. ((503) 235-5333, 1-888-235-5333.) (11/99)

Roots and Branches and Bradley Angle House sponsor a **support group for queer youth** who have experienced emotional, physical or sexual abuse in an intimate

Lesbian writing group: journaling, poetry, fiction, beginner to published. (Judith (503) 245-3391, jchason@teleport.com.) (11/99)

Portland Gay Men's Chorus is open to singers, support members and volunteers. ((503) 460-3689, www.pdxgmc.org.) (11/99)

The Real Connection is a social gathering for gay men who are artists, writers, musicians or who pursue some creative activity. Monthly potlucks on the second Friday. (Todd (503) 236-5763.) (11/99)

Rose City Gay Freedom Band is a concert band open to lesbian, gay, transgendered, bi and supportive musicians and friends. (PO Box 1082, Portland, OR 97207. (503) 790-2170, http://community.oregonlive.com/cc/rcgfb.) (11/99)

ties. Refer to web site for schedule. (www.hawkenet.com/laironthe/wolf.html.) (5/00)

Lesbians Enjoying the Sciences is a fun-loving group of women who enjoy exploring all aspects of the environment. Activities include birdwatching, nature walks, archaeology, rock collecting, camping, kayaking, star gazing, an occasional "lecture" and a monthly planning potluck. No experience necessary. (7-9 pm fourth Thursday planning meeting. (503) 280-0168.) (5/00)

Lesbian social group for women 50 and over meets on the third Saturday of the month. (4-7 pm. (503) 281-4424, (503) 331-0415.) (11/99)

Long Yang Club—Portland Chapter, a social group for Asian gays and lesbians and their friends, meets at 8 pm on the first Wednesday and third Sunday

PHOTO BY STEVE PATTERSON