



When an  
ordinary  
Realtor  
simply  
won't do...



933 SE 31ST AVE  
PORTLAND, OR 97214  
503-238-7617 OFC  
WWW.CLIMBATREE.COM

**Portland's Alternative Realtors**  
NORA, STEVE, MICHELE & SHARILYNN



**Fresh Fruit!**  
(and you should  
see our produce)

**FOOD FRONT**  
Cooperative Grocery

2375 NW Thurman St • Portland • 222-5658

SWEDISH MASSAGE • POLARITY • SPORTS MASSAGE

## East-West College of the Healing Arts

A Professional School of Massage & Bodywork



Training for Excellence

- Oregon's Only American Massage Therapy Association/COMTA-Approved Massage Curriculum



- Day or Night Classes
- Convenient Financing
- Bookstore and Cafe
- Student Clinic Massage



Enrolling now for classes that  
begin July 6 & October 5, 1998



A Referral Brochure is available for Licensed  
Massage Therapists in the Portland area

4531 SE Belmont Street • Portland, Oregon 97215-1635

503-231-1500 • 1-800-635-9141  
503-232-4087 fax • www.ewcha.com

DEEP TISSUE MASSAGE • ANATOMY AND PHYSIOLOGY

## LOCAL news

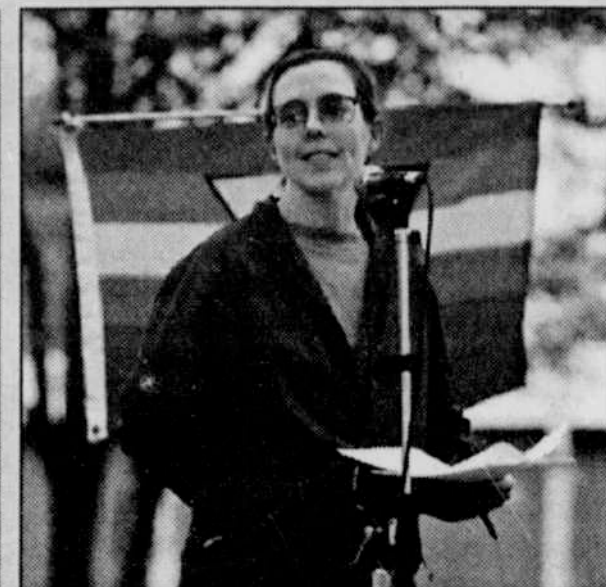
### BI DAY '98 HAILED AS SUCCESS

The skies cleared just in time for Bi Day '98—believed to be the only all-bisexual annual rally in the United States.

An estimated 100 bisexuals and their friends turned out for the event, held June 26 in the South Park Blocks in downtown Portland.

The second annual gathering was sponsored by the Portland Bisexual Alliance and featured an array of speakers, including openly bisexual state Sen. Kate Brown, a Portland Democrat, who told the crowd: "When I was a kid, I had a poster in my bedroom. It was bright green with an orange thumbprint on it, and it said, 'I gotta be me.' I want to thank each and every one of you for letting me be me."

Other speakers included representatives from groups like Oregon Action, Pride Northwest and the Lesbian Avengers.



State Sen. Kate Brown at Bi Day '98

Folks from Portland's specifically bisexual organizations—including Bisexual Community Forum, Portland Bisexual Women, Bradley-Angle House Bi Women's Caucus and BiNet Oregon—were also on hand.

### CALLING ALL WOMEN TO THE WOODS

Women in the Woods '98, a women-only event sponsored by the Lesbian Community Project, will be held Aug. 21 to 24.

The event unfolds at Breitenbush Hot Springs Resort in Detroit, Ore., a secluded 60-plus acres of old growth forest with open-meadow hot springs and geothermally-heated cabins.

An estimated 150 women are expected to participate in myriad workshops, discussion groups, soaking, drumming and meditation.

Breitenbush serves only vegetarian meals. Special dietary restrictions will be considered.

The fee is \$240. The full registration fee must be paid no later than Aug. 1. For a registration form, call LCP at 282-8090.

### HRC COMING TO ROSE CITY

The Washington, D.C.-based Human Rights Campaign is coming to Portland at July's end to begin a statewide visibility effort around gay and lesbian issues in the November election.

HRC will also be sponsoring a voter registration drive throughout the state. A kickoff rally in Pioneer Courthouse Square in downtown Portland is set for July 31 and is scheduled to include Candace Gingrich, Betty DeGeneres and Donna Red Wing. The event will be held from noon to 1 p.m.

### RIDING FOR A REASON

Cyclists of various levels are being sought for the second annual Ride for a Reason, slated for Aug. 13 to 16. Hundreds are expected to participate in the four-day bike ride designed to raise funds for HIV and AIDS services in Washington and Oregon.



Departing from the Capitol Rotunda in Olympia, Wash., riders will find the finish line 225 miles down the road at the Rose Quarter in Portland.

The event includes meals, beverages, mechanical and medical support, and hot show-

ers. More than 300 volunteers are expected to assist throughout the ride.

For more information, call 1-888-89-BIKES, or go to the Web site [www.rideforareason.org](http://www.rideforareason.org).

### BiNET TO HOLD CAMP-OUT

Northwest bisexuals will hold their seventh annual gathering and camp-out Aug. 27 to Sept. 1 in the Wenatchee National Forest near Mount Rainier National Park in Washington.

The gathering, sponsored by the Bisexual Network of Oregon, will be held at a secluded campground 23 miles east of Chinook Pass.

Area activities include horseback riding, hiking, fishing, boating, huckleberry picking, and excursions to Mount St. Helens National Volcanic Monument and Mount Rainier.

Campers may come for any portion of the Wednesday evening through Tuesday morning gathering.

All bisexuals and their guests are welcome. For additional information, call BiNet at (541) 265-5861.

### LCP SOFTBALL TOURNAMENT AROUND THE CORNER

The Portland-based Lesbian Community Project's 13th annual softball tournament, the Tournament of Choice, is slated for July 31 through Aug. 2 at Prairie Fields in Brush Prairie, Wash.

More than 30 women's teams from Oregon and Washington are scheduled to compete in four divisions.

An estimated 500 players, fans and volunteers attended the event last year.

In addition to 160-plus softball games, there will be a raffle and silent auction.

Prairie Fields has six softball fields and camp sites. For camping information and reservations, call (360) 253-9424.

The tournament proceeds will benefit LCP, a multi-issue, multiracial grass-roots organization working for social justice and democracy.

For more information about the tournament, call LCP at 282-8090.

Compiled by INGA SORENSEN

