

Home of the **5%** Savings Account
*APY \$50.00 MINIMUM

ATM
VISA Check Card



ALBINA COMMUNITY BANK
2002 NE Martin Luther King, Jr. Blvd.
503 287-7537

*Annual Percentage Yield Effective August 30, 1997. Consult branch for current APY.

MEMBER F.D.I.C.



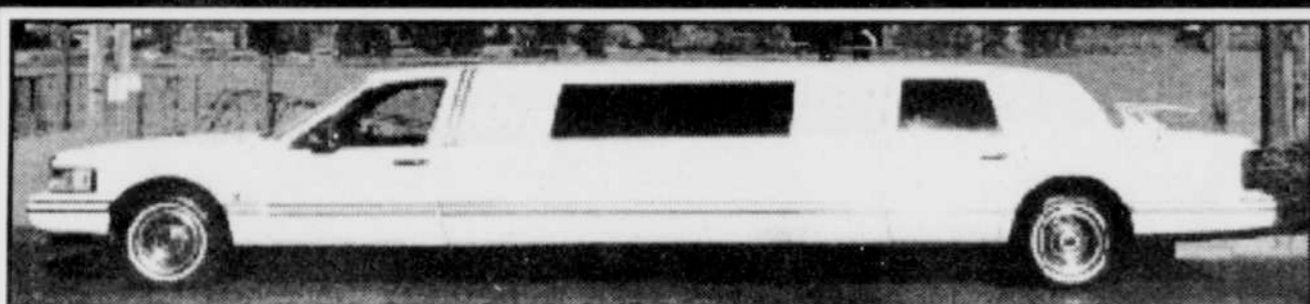
Explore
your
non-linear
sexuality!



13355 SW Henry St. • Beaverton, OR 97005
(503) 643-6645 • www.SpiritOne.com/~dkwilds



Tiffany Limousine



View the Holiday Lights from the Luxurious Comfort of our
Chauffeured Limousines.



Parties
Theater
Dinner

235-2341

Guests
Ballet
Ceremonies

The Perfect Limousine for Every Holiday Festivity

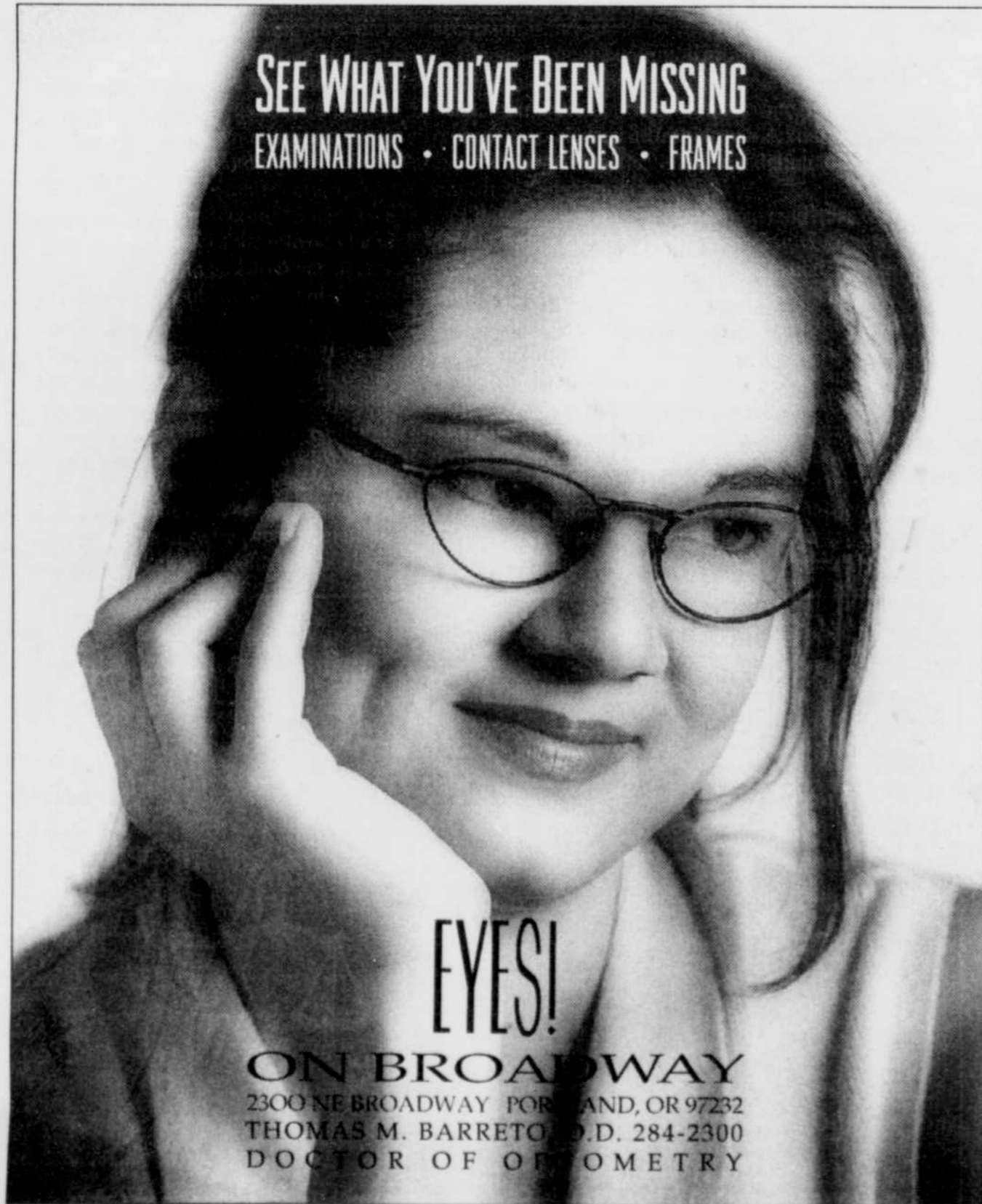


PEARL COURT APARTMENTS

Now Leasing. Brand-new. Studios, 1 & 2 bedrooms.
Expansive courtyard, free bicycle storage, library, conference room.
Residential lounge & great room. Access-controlled building
Income restrictions apply.
920 Northwest Kearney
222-1999



SEE WHAT YOU'VE BEEN MISSING
EXAMINATIONS • CONTACT LENSES • FRAMES



EYES!

ON BROADWAY
2300 NE BROADWAY PORTLAND, OR 97232
THOMAS M. BARRETO, O.D. 284-2300
DOCTOR OF OPTOMETRY

Is a Gay Man Born or Made?

The debate continues whether we are gay because of nature or nurture. Most gay men believe themselves to have been so from early childhood and few care about the cause. By the time we exit the closet most of us prefer to spend our time and energy on what it means to be gay, not why.

And that really is the issue: What does it mean to be a gay man? Is it simply a matter of sexual arousal? Or are we different from straight men in other ways? To the extent that we are different, does it have implications for how we should live?

One major difference is the impact of growing up in a homophobic world. Gay men are forced to reject the very essence of their being, to live out a false identity and to fear their deepest and truest selves. Unfortunately when we step out of the closet the authentic self does not automatically emerge. We continue to harbor self hatred and other scars which cripple us emotionally and spiritually.

There is no painless route to authenticity. Jesus taught that to find life we must first die. This seeming paradox has been interpreted in various ways but basically it means that the false aspects of our self must die so that authentic self can emerge. Our adversaries might say it is our gayness that must die but that's impossible. What must die is the wounded ego which enslaves us in self-centered and futile patterns of living. Have you considered being set free in a leap of faith, to live as a gay man created in the image of God?

A message from the Anawim Community—gay men committed to following Jesus through a life of prayer and service to our gay brothers.