

END OF SUMMER SALE

August 25–September 30

Selected merchandise will be
25%–60% Off
original prices and we have wonderful
fall merchandise arriving daily.

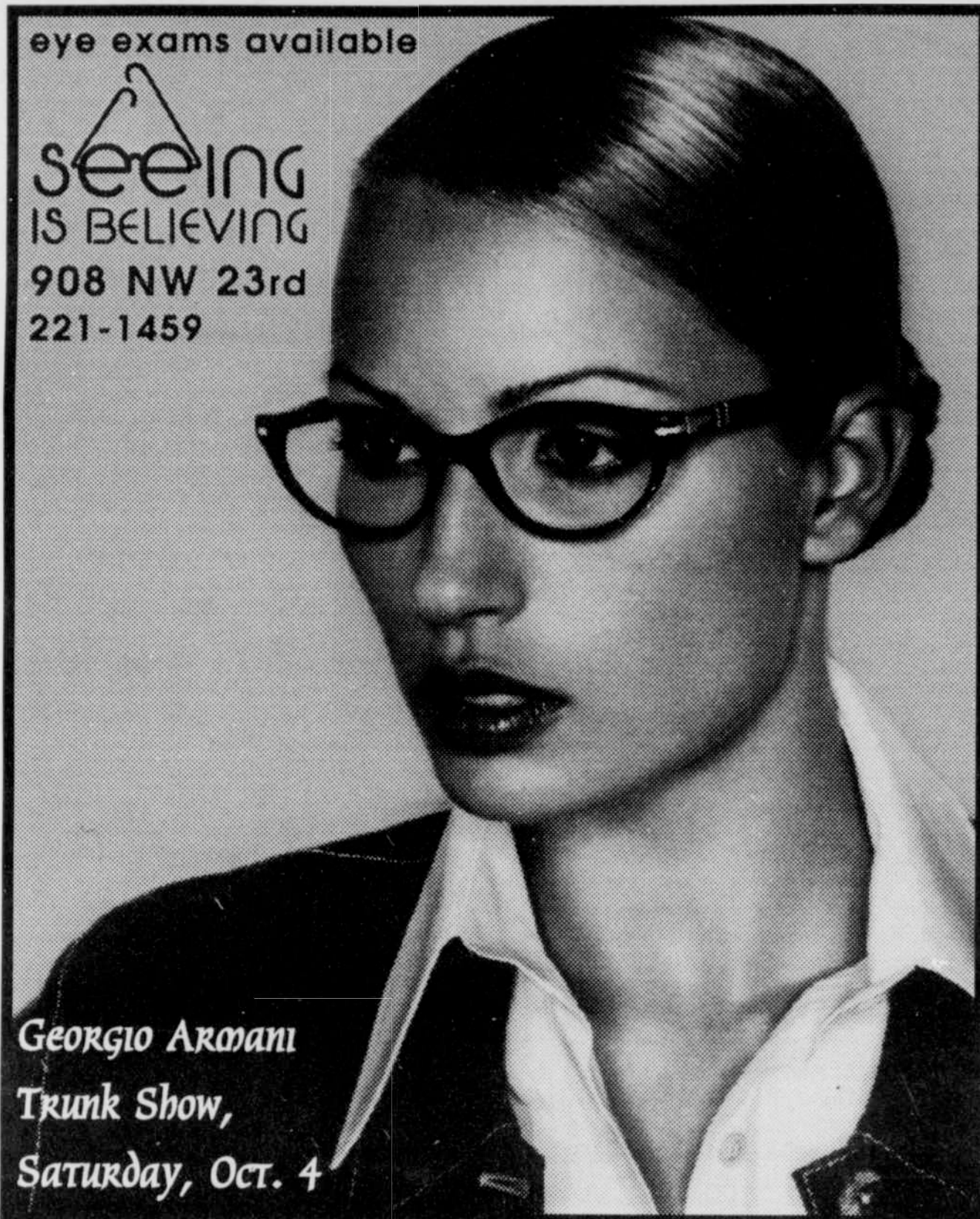
*Sale does not apply to previously purchased
items and all sales are final.*

Changes

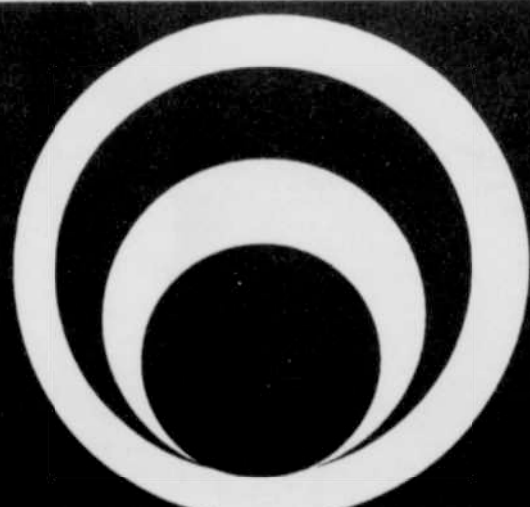
DESIGNS TO WEAR
927 SW Yamhill • 503-223-3737

eye exams available

seeing
IS BELIEVING
908 NW 23rd
221-1459

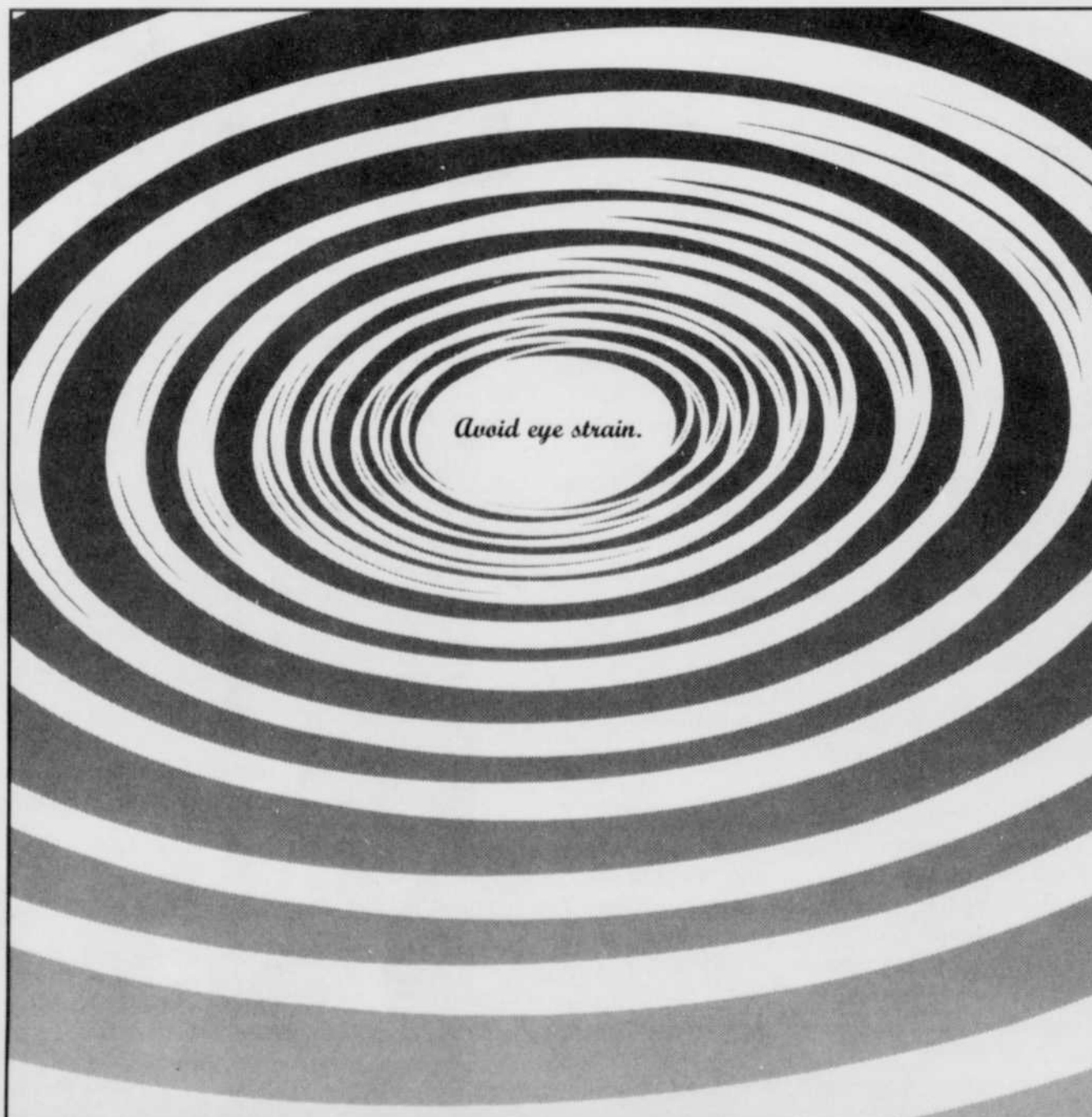


Georgio Armani
Trunk Show,
Saturday, Oct. 4



It's My Pleasure,
Community
Resources
& more!

4258 SE Hawthorne Blvd.
Portland OR 97215 236-0505



Avoid eye strain.

GET THE BEST SEATS. RESERVE YOUR
SEASON TICKETS NOW AT 287-HOOP.



Reebok

RASMUSSEN BMW

USWEST



**Do you live or work
in Washington
County?**

We're here for you!!

The Washington County Health
Department offers daily
HIV testing and counseling,
by appointment and walk-in,
in two convenient locations:

155 North 1st Hillsboro **12550 SW 2nd Beaverton**

Other services include
STD exams and treatment
and a Wellness Program
for individuals who are
HIV positive.
Call 648-8851
for an appointment