

Out 'n' About Youth, a social and support group for gay, lesbian and bisexual teens, meets Thursday evenings in Corvallis. (7 pm at First United Methodist Church, 1165 NW Monroe St. 541-752-2491.) (8/97)

Outside In has transitional housing for HIV-positive youth aged 17 to 22 who are homeless or at risk of becoming homeless. (Karla Wolf 223-4121.) (10/97)

Phoenix Rising Foundation Inc. is a mental health agency primarily serving members of the sexual minority communities, with social and support groups for sexual minority youth: **Awakenings**, an interagency project with Janus Youth Programs (6-8 pm Wednesday at Harry's Mother, 3942 SE Hawthorne Blvd.); **The Trans Group**, for transsexual, transgendered and cross-dressing youth (6-8 pm Wednesday at Phoenix Rising); **Transitions** (3:30-5 pm Wednesday at Cedar Hills Recreation Center, Beaverton); **Windfire** (6-7:30 pm Thursday at Phoenix Rising); **Personal Deity Proxy**, a group to share creative endeavors (5-7 pm Friday at Phoenix Rising). (620 SW Fifth Ave., Suite 710, Portland, OR 97204. 223-8299.) (3/97)

Positive Place, a group for HIV-positive people under age 25, meets on Thursdays at Outside In. (1236 SW Salmon St. Call to sign up: Graham Harriman 241-6448.) (9/97)

Pride Mentorship Project serves Multnomah County gay, lesbian, trans and questioning youth between the ages of 13 and 19. (Brandt Rigby 244-2292, 223-8299.) (5/97)

Queer Youth in Love and Danger is a support group for youth under 21 who are emotionally, physically or sexually abused in an intimate relationship. Free and confidential. Cosponsored by Bradley-Angle House and Roots and Branches. (Kathy 238-0780, Brooks 281-3540.) (2/98)

Rainbow is a positive social and peer-support group for sexual minority youth, with an emphasis on youth of color. Sponsored by The Urban League. (4:30 pm Monday at Metropolitan Community Church of Portland, 2400 NE Broadway, Dionne 280-2663, ext. 420.) (12/97)

Roots and Branches provides positive mental health counseling tailored to the needs of lesbian, gay and bisexual youth. Therapy, consultation, advocacy and referral are offered to individuals and families on a sliding scale. (2020 SE Powell Blvd. 238-0780.) (7/97)

Safe Space is a group for lesbian, gay, bisexual and questioning youth that meets in Bend. (541-383-4861.) (2/98)

Southern Cascades Youth Project is a weekly social and discussion group for lesbian, gay and bisexual youth aged 20 and younger in the Klamath Basin area. (541-883-2437.) (2/98)

Southern Oregon Youth Outreach holds monthly get-togethers at the Abdill Ellis Lambda Community Center in Ashland. (5 pm third Thursday, 56 Third St. PO Box 515, Medford, OR, 97502. 541-734-8007.) (3/97)

Triple Point is a social group for gay, lesbian, bisexual, transgender, queer and questioning youth in Southwest Washington. Weekly rap sessions and activity excursions. (Celeste Baskett 360-735-9170.) (5/97)

VOICES (Voices of Individual and Community Empowerment from the Streets) is a self-support group for queer youth. Free pizza. Must be under 21. (6-8 pm Wednesday at Outside In, 1030 SW 13th Ave. 223-4121.) (3/97)

Young Men's Group offers gay and bisexual men aged 18 to 27 years an opportunity to meet and socialize. Part of the Speak to Your Brothers program of Cascade AIDS Project. (Trevor 223-5907, ext. 174, roniluv2@aol.com.) (3/98)

CENTRAL OREGON

Beyond the Closet Inc. provides services to the lesbian and gay community and its supporters, including speakers, films, entertainers and workshops that educate about issues of concern, such as homophobia. BTC seeks to form alliances with others who work for social, economic and environmental justice and to share resources with others in rural Oregon. (PO Box 9174, Bend, OR 97708. 541-317-8966.) (7/97)

Deschutes County Coalition for Human Dignity. (PO Box 6084, Bend, OR 97708-6084. 541-385-3320.) (2/98)

Deschutes Discrimination Reporting Line exists to document discrimination in Central Oregon. For information, referral and confidential reporting of hate crimes call 541-383-4113. (PO Box 6084, Bend, OR 97708.) (12/96)

Equestrian Group. (Goose Lake Ranch 541-388-3680.) (7/97)

Gay and Lesbian Alcoholics Anonymous meets in Bend. (5:30 pm Tuesday. 541-388-3680.) (5/97)

Parents, Families and Friends of Lesbians and Gays—Bend meets on the third Monday of the month at the First Presbyterian Church. The group's threefold mission is support, education and advocacy. (6:30 pm meeting, come at 6 pm for coffee, visiting or browsing in the library. 230 NE Ninth St. 541-317-2334.) (5/97)

COASTAL OREGON

Coos County Coalition for Human Rights is committed to the promotion of equal rights for all people. Meets last Tuesday of the month. (PO Box 325, North Bend, OR 97459. 541-269-2333.) (7/97)

GALON, Gay and Lesbian Outreach Network, is a support group for the gay, lesbian and transgendered people of Coos County. Monthly newsletter. (PO Box 1324, Coos Bay, OR 97420. 541-888-5327.) (7/97)

GLUEPAC (Gay and Lesbian United Effort) meets monthly to promote equality for, and visibility of, the gay and lesbian community in Lincoln County. Fun social and political advocacy. (541-265-6368.) (7/97)

North Coast Pride Network, Columbia Pacific Region, for lesbians, gay men, bisexuals and transgendered people. Social and political activities, gay film series, networking with other human rights groups. Meets monthly in the Seaside/Astoria area. (PO Box 2751, Gearhart, OR 97138-2751.) (2/98)

The **Out-Line** program provides outreach to and advocacy for gay and lesbian youth and adults. Monthly support groups, information and referral, and a media center. (Careerpaths Training and Resource Center, PO Box 2004, Newport, OR 97365. 541-265-3087.) (7/97)

Parents, Families and Friends of Lesbians and Gays—Coos Bay meets on the first Tuesday of the month. (7:30 pm at First Presbyterian Church, 438 Elrod St. 541-347-9109.) (7/97)

Parents, Families and Friends of Lesbians and Gays—Lincoln County provides support, education and advocacy. (PO Box 1156, Newport, OR 97365-0091. 541-265-6368.) (7/97)

EASTERN OREGON

Lambda Eastern Oregon Association is a social, support and networking association serving gay men, lesbians and bisexuals in Baker County. Bimonthly meetings. (Box 382, Baker City, OR 97814.) (7/97)

NORTHERN OREGON

Parents, Families and Friends of Lesbians and Gays—Mid-Columbia meets on the third Tuesday of each month. (541-386-3108, 541-298-8146.) (12/97)

Wasco County Citizens for Human Dignity. (PO Box 417, The Dalles, OR 97058.) (12/97)

SOUTHERN OREGON

Abdill Ellis Lambda Community Center Association welcomes men, women, families and friends. (56 Third St., Ashland, OR 97520. 541-488-6990.) (3/97)

Chrysalis, a social and support organization for cross-dressers in Southern Oregon and Northern California, holds monthly meetings and socials. (PO Box 1793, Klamath Falls, OR 97601.) (9/97)

Gay Alcoholics Anonymous meets at First United Methodist Church in Medford. (7 pm Friday, 607 W Main St. 541-770-9461.) (3/97)

Gay and Lesbian Alliance meets monthly. (7:30 pm second Thursday at Umpqua Unitarian Church, 1265 NW Watters St., Roseburg, PO Box 813, Roseburg, OR 97470.) (7/97)

Klamath Area Lambda Association meets regularly and hosts a variety of friendly, inclusive social gatherings. (PO Box 43, Klamath Falls, OR 97601. 541-883-2437.) (8/97)

Klamath Basin Men's Forum hosts weekly socials for gay and bisexual men. (541-883-2437.) (2/98)

Lesbian Community Project. (PO Box 515, Medford, OR 97502. 541-488-6990.) (3/97)

OnTrack Alan Collins AIDS Project offers HIV counseling, testing, educational outreach and case management at the **10th Street Outreach Center**; adult foster care at **Alan's House**; low-cost housing for independent living at **Fairfield Place**; and an HIV support group on Thursday from 5:15 to 6:30 pm. (541-772-1777, 541-779-2006.) (3/97)

Parents, Families and Friends of Lesbians and Gays—Grants Pass. (541-488-3436.) (11/96)

Parents, Families and Friends of Lesbians and Gays—Klamath County offers resources and support. (Write care of First United Methodist Church, 230 N 10th St., Klamath Falls, OR 97601. 541-882-3309.) (7/97)

Parents, Families and Friends of Lesbians and Gays—Rogue Valley meets on the first Thursday of the month in Ashland (7 pm at First United Methodist Church, 175 N Main St.) and on the third Tuesday of the month in Medford (7 pm at the Presbyterian church, 85 S Holly St.) A mother's group meets on the third Saturday (call for information). (541-488-1142.) (2/98)

Southern Oregon Men's Outreach offers a "First Saturday" social, free HIV testing and counseling, and a monthly newsletter. (7:30 pm social at Unitarian Center, 87 Fourth St., Ashland. PO Box 515, Medford, OR 97502. 541-488-6990.) (9/97)

Valleys of the Umpqua Metropolitan Community Church meets on the second Sunday of the month. Services are currently performed by the laity of the church. (11:30 am, 2836 Carnes Road, Roseburg, PO Box 2125, Roseburg, OR 97470. 541-679-0975.) (7/97)

Womansource. (PO Box 335, Ashland, OR 97520. 541-482-2026. 541-488-1616.) (7/97)

Women's Crisis Support Team. (Mailing address: 748 NW Fifth St., Grants Pass, OR 97526. 541-474-9349, hot line 541-479-1400.) (7/97)

WILLAMETTE VALLEY

After 8 works for political change and provides information and referral for lesbians, gay men and bisexuals in Benton and Linn counties. (7 pm second Tuesday, No December meeting, 101 NW 23rd St., Corvallis. PO Box 1828, Corvallis, OR 97339. 541-752-8157.) (11/98)

Battered Lesbian Support Group is a confidential group in Eugene for lesbians and bisexual women who have been physically, sexually or emotionally battered in their relationships with women. (Carrie 541-485-6513.) (7/97)

Eugene Frontrunners/Frontwalkers: Walk or run with friendly gay, lesbian and bisexual people. (Hank 541-484-6259.) (7/97)

Gay and Lesbian Health Care Workers of Salem is open to those who work in any health-related field. (557-8414, 363-0519.) (7/97)

A **gay men's prayer and meditation group** meets Sundays in Eugene. (5-6 pm, 1440 Kincaid St. Hank 541-484-6259.) (7/97)

Ladies Home Companion is a newsletter of activities, politics, events and people for lesbians in the Corvallis area. \$6 yearly. (PO Box 1828, Corvallis, OR 97339.) (7/97)

Ladies Social Register is a monthly lesbian newsletter featuring social events, home repair and gardening tips, etc. \$10 yearly. (PO Box 3214, Albany, OR 97321.) (1/97)

Lavender Welcome Wagon greets lesbians new to Linn, Benton and Marion counties, or those just coming out. (541-979-9115.) (7/97)

Lesbian Forum meets alternately in Corvallis and Albany for social, nonpolitical discussions and events. (7 pm first Wednesday, 541-928-0871.) (7/97)

Morningside United Methodist Church. (3674 12th St. SE, Salem. 364-5013.) (7/97)

MPOWERment Project is a social and outreach center for all gay and bisexual men in Eugene, offering weekly group meetings, coffee hours, movie nights and special events. (775 Monroe St. 541-683-4303.) (7/97)

Oregon State University's Lesbian, Gay, Bisexual, Transgender Alliance meets weekly during the school year for discussions and support. (7 pm Monday meetings at Women's Center. Offices in Room 142, Snell Hall, Memorial Union East. 541-737-6360.) (1/98)

Parents, Families and Friends of Lesbians and Gays—Corvallis/Albany. (7 pm fourth Monday at First Methodist Church, 1165 NW Monroe St., Corvallis. 541-752-0889.) (8/97)

Parents, Families and Friends of Lesbians and Gays—Salem meets on the third Wednesday of each month at First

United Methodist Church. (7:30 pm, 600 State St. PO Box 121, Gates, OR 97346. 897-2524, 393-9669.) (1/97)

Pathfinders of Linn and Benton Counties is a support group for gay men, bisexuals, lesbians and people accepting of diverse lifestyles. Meets twice monthly for dinner and socials. First Wednesday in Albany, third Wednesday in Corvallis. (PO Box 971, Corvallis, OR 97339. 541-752-6322.) (7/97)

Sweet Spirit Metropolitan Community Church. Ecumenical Christian. (11 am Sunday, 3322 Lancaster Drive NE, Salem. 363-6618.) (7/97)

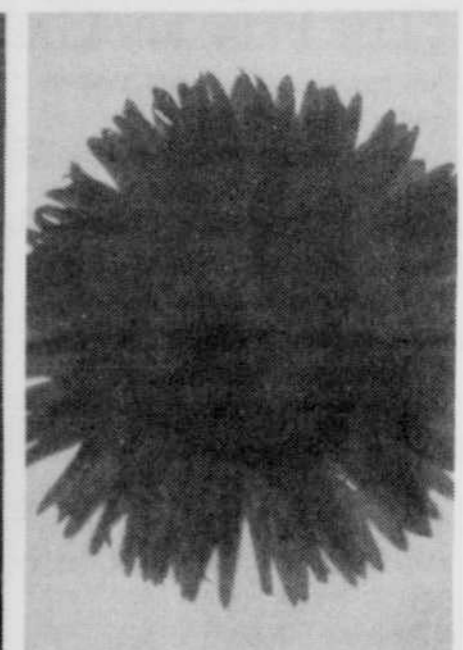
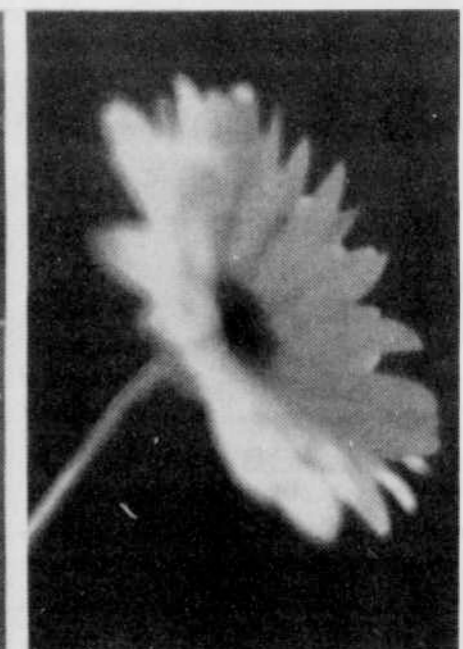
Together Works is a support group for lesbians, gay men, bisexuals and friends. Activities include social events and discussion of timely topics. Meet others in a neutral, safe environment. (7:30 pm second and fourth Mondays at First Baptist Church, McMinnville. 434-6266.) (7/97)

Willamette University's Lesbian, Gay, Bisexual Alliance meets weekly during the school year for discussions, event planning and support. Community members welcome. (370-6267.) (7/97)

WASHINGTON

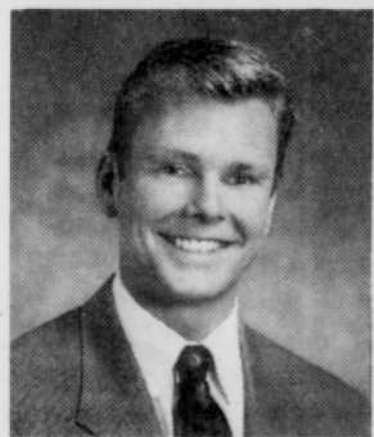
Girlfriends (formerly Southwest Washington Lesbian Potluck Group) meets on the third Saturday of every month for a potluck dinner and social evening. All lesbians welcome. (Catherine 360-695-6809, Tina 360-834-2896.) (11/97)

Nahcotta Sanctuary, a secluded retreat on Long Beach Peninsula, provides a healing refuge for individuals, couples or small groups. For ongoing events, see Workshops. Lodging \$35-\$95. Intentional community opportunity available. (PO Box 87, Nahcotta, WA 98637. 360-665-4181.) (7/97)



Pop photography by Philippe Vidalenc is on display at Brian Marki Fine Art through September

Investing takes more than money...
it takes vision, service, performance.



Fred Elledge, Financial Consultant
121 SW Morrison Street, Suite 1600
Portland, OR 97204
(503) 248-2279 or (800) 452-0966

SMITH BARNEY

They make money the old-fashioned way. They earn it.®

© 1997 Smith Barney Inc. Member SIPC

A Member of TravelersGroup

SEXUAL DYSFUNCTION?

Seek proven medical solutions from
dedicated specialists.

- Inability to Maintain a Firm Erection • Low Desire
- Premature Ejaculation • Curved Erections • Impotence After Surgery
- Oral Agents, Topicals, Injectables, Phytotherapy.

Consider the newest treatments:
MUSE™, Caverject™, ErecAid™, Actis™

Call for information or a confidential consultation with no obligation

CENTER for MEN'S HEALTH 699-9520

Toll Free 1-888-474-5489