

# out about town

(7:30 pm Sunday in the Egyptian Club dining room, 3701 SE Division St. Hot line 452-5408.) (3/98)

**Log Cabin Republicans** gathers monthly to socialize, meet prominent people or just enlighten a few minds in the party. (PO Box 2655, Portland, OR 97209-2655. 224-2454.) (12/97)

**Progressive Queers** is a group working for social justice on issues of race, economics, cultural understanding, and gender and sexual identity. (6:30-8 pm fourth Thursday. Millard 284-2979.) (7/97)

**Radical Women** is active in the daily struggle against racism, sexism, anti-gay bigotry and labor exploitation. Meets every second Wednesday of the month. (6:30 pm in Room 201, Northwest Service Center, 1819 NW Everett St. 228-3090.) (8/97)

**Right to Pride Political Action Committee** advocates full civil rights, human rights and social equity for lesbians, gay men and bisexuals by endorsing and supporting candidates and campaigns. (921 SW Morrison St., Suite 546, Portland, OR 97205. 228-5825, barry@tp-or.org.) (2/98)

**Rural Organizing Project** is a network of human dignity groups advancing democracy in Oregon. Call for local contacts. (PO Box 1350, Scappoose, OR 97056. 397-5453, ROPOffice@ardvark.com.) (10/97)

**Southwest Washington Fairness Coalition** works to defeat organized statewide political efforts which limit or deny the civil rights of any resident of Washington. New members welcome. (1701 Broadway, Suite 138, Vancouver, WA 98663. 360-695-1002.) (7/97)

## CRISIS

The **Alcohol and Drug HelpLine** (232-8083 in Portland) and **YouthLine** (233-1113 in Portland) give free, unbiased and confidential assistance. Call 1-800-621-1646 from elsewhere in Oregon. (7/97)

The **Anti-Violence Line**, 796-1703, helps compile statistics on hate crimes and gives victims a chance to talk to someone sympathetic. Outside Portland call 1-800-796-1703. (7/97)

Call the **Bias Crime Unit** of the Portland Police, 823-0434, if you feel you have been a victim of any type of bias crime in Portland. (10/97)

**Bradley-Angle House** provides a weekly confidential battered lesbian and bi women's support group. Confidential intakes. Groups facilitated by queer women. Child care provided; donations accepted. (232-7812.) (12/97)

The **Domestic Violence Resource Center** provides a 24-hour crisis line as well as shelter at a confidential location for women and children escaping domestic violence. Sorry, no boys older than 12 years. (640-1171.) (2/98)

Clackamas Women's Services and the Portland Women's Crisis Line offer a free confidential **domestic violence support group** for women battered by women. (Joyce Baxter at PWCL 232-9751, Toni Hughes at CWS 722-2366.) (2/98)

**Portland Women's Crisis Line** operates 24 hours a day. (235-5333, 1-888-235-5333.) (2/98)

The **Women's Intervention Group** is an ongoing group for lesbian and bisexual women who use physical or emotional violence to hurt and intimidate their partners. Facilitated by Julie O'Donnell, MSW, and Sharon Bowland, MSW. (5-7 pm Wednesday. \$10-\$15 per session. Phoenix Rising 223-8299.) (9/97)

## MUSIC

**Bridges**, Portland's gay, lesbian and bisexual vocal ensemble, accepts new members in the fall. The group rehearses Wednesday evenings. Administrative support persons are always needed. (242-1675.) (7/97)

**Portland Gay Men's Chorus** meets most Monday evenings. Singing membership is open to all qualified singers, but nonsinging members are also needed to help with production. (Audition or membership information 617-7462, PGMC 460-3689.) (2/98)

The **Portland Lesbian Choir** accepts singing members in September and January. Rehearsals are held on Sunday evenings. Supportive members and volunteers are welcome anytime. (PO Box 8212, Portland, OR 97207. 241-8994, http://www.geocities.com/WestHollywood/5912/) (9/97)

**Rose City Gay Freedom Band** is a concert band open to lesbians, gay men and supportive friends. Bring your instrument and a music stand. Don't play an instrument or sing? Become a Band Aid or a member of the **performance flag corps**. (Band rehearsal: 6-8 pm Sunday at Piedmont Presbyterian Church, 5760 NE Cleveland Ave. PO Box 1082, Portland, OR 97207. 790-2170.) (4/97)

## RECOVERY

**Live and Let Live Club** offers lesbian and gay 12-step programs. Call for meeting times. (2940-A SE Belmont St. 460-9404.) (7/97)

**Over the Rainbow** holds nonsmoking NA meetings on Thursdays at the Live and Let Live Club. (7-8:30 pm. 2940-A SE Belmont St. 460-9404.) (10/97)

**Rainbow At-Anon** meets on Saturdays at the Alano Club Boardroom. (5:30-6:45 pm. 909 NW 24th Ave. 222-5756.) (7/97)

**Rational Recovery** does not mystify addiction and recovery; its approach to chemical dependency is as a technical problem with a technical solution. (Cliff Walker 239-5359.) (2/98)

**Triangle Project** at ASAP Treatment Services provides gay-specific alcohol and drug counseling. Fees adjusted or waived. Call the intake coordinator Monday through Friday and ask for a Triangle Project appointment. (2130 SW Fifth Ave. 224-0075.) (2/98)

## SOCIAL

**Ample Opportunities** organizes many activities for large women. (245-1524.) (7/97)

**Bad Girls**, Portland's women's S/M educational group, is open to all women interested in exploring the deeper part of their psyches. All levels of experience welcome. Bad Girls sponsors one workshop, one discussion group and one social event each month. (PO Box 17254, Portland, OR 97217-0254.) (7/97)

**BLASST**, Bisexuals, Lesbians, and Straights Talking Together, is a discussion group for all women. Meets on Wednesday evenings. (Catherine 233-1979, K'Ronda 282-8586.) (7/97)

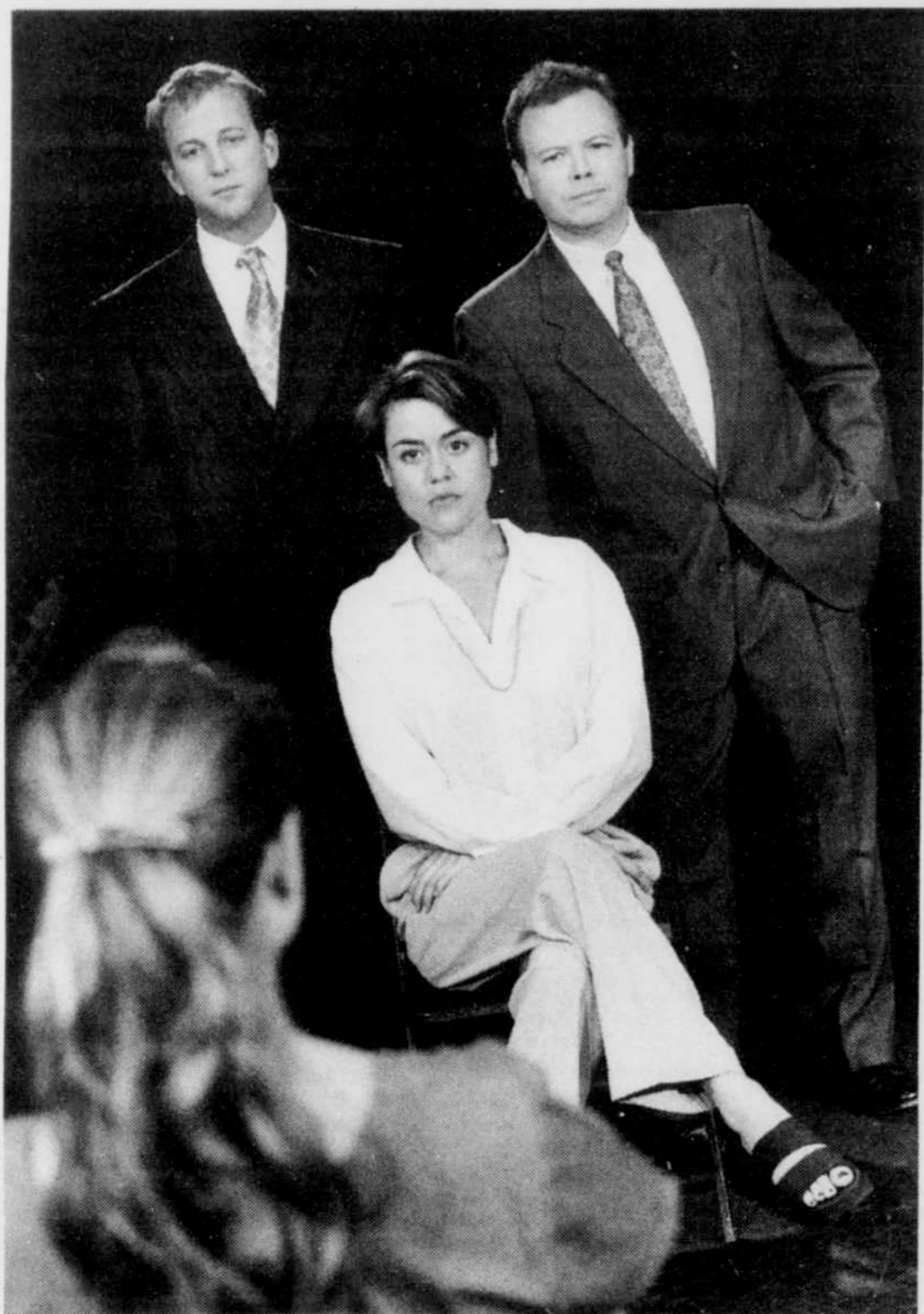


PHOTO BY OWEN CAREY

**Miracle Theatre's production of Unmerciful Good Fortune, playing through Oct. 18, stars Katherine Spencer (center), Mari Jacobsen (foreground), Will Gregg (left) and Cliff Swinford**

**Cascade Bears** is a group of like-minded men who support bears and their admirers in the Northwest. (625 SW 10th Ave., Suite 125, Portland, OR 97205-2788. Membership dues \$15 per year.) (7/97)

**Chaps** is an organization dedicated to teaching men the tenets of safe, sane and consensual S/M. Learn the ropes from the more experienced players. (321-5139.) (7/97)

**Forest Grove GLUE** (Gays and Lesbians United for Enrichment) is a support group offering the community and its family and friends a safe and friendly place to meet and socialize. Movies, potlucks, discussions, etc. (7:30 pm first and third Mondays. Bill 516-4583.) (11/97)

**Funny Ladies Tea and Posey Society** meets on the first Saturday of the month for a potluck dinner. Lesbians 35 and older; singles, couples and campers welcome. Some outdoor activities. Monthly newsletter \$9 per year. (234-1383.) (7/97)

**Gentle Giants of Oregon** is a social group for chubby men and their admirers. (PO Box 1844, Portland, OR 97207. Chub Line 241-4535.) (7/97)

**K-9 Club** is a group of kindred folks and their dogs who meet to hike and talk in Portland parks. (285-2986.) (7/97)

**Lesbian Garden Club** is a social network for lesbians interested in gardening. Newsletters, plant exchanges and social outings. (Nicki 287-6120.) (11/96)

**Lesbian support group for women 50 and over** meets on the third Saturday of the month. (7-10 pm. 281-4424, 331-0415.) (7/97)

**Lesbians Enjoying the Sciences** is a field trip-oriented group for lesbians who enjoy the natural sciences, e.g., geology, botany, birdwatching and astronomy. (Noon-2 pm first Sunday potluck and planning meeting. 280-0168.) (12/97)

**LesbOS (Lesbians of Size)** is a group for size-accepting lesbians of any size. (7-9 pm third Thursday. 246-4382.) (5/97)

**Metro Club** is a social group for gay men 40 and over and those who appreciate them. Monthly potlucks. (598-3442.) (7/97)

**Neighborhood MenTalks** brings gay and bisexual men together to socialize and discuss topics of mutual interest. Monthly gatherings are facilitated and hosted by volunteers. (Geoffrey 223-5907, ext. 145, feschgeoff@aol.com.) (3/98)

**Oregon Bears** is a social group for bears and their admirers. Activities and monthly social gatherings. (240-2813.) (3/98)

**OutDancing** teaches partner dancing for same-sex couples. Classes start at the beginning of each month. (236-5129.) (2/98)

**Queer Night at LaLuna** is an all-ages event. The dance room features a different mix of music each week. (9 pm Monday. 215 SE Ninth Ave. \$3, \$5 under 21. 241-LUNA.) (2/97)

**The Real Connection** is a social gathering for gay men who are artists, writers, musicians and creative in all the disciplines. Informal monthly potlucks. (Todd 288-4736, Mike 282-0107.) (7/97)

**Rose City Discussion Club** is open to all orientations, fetishes and lifestyles that are safe, sane and consensual. Monthly meetings and newsletter. (PO Box 1370, Clackamas, OR 97015. 650-7052.) (2/98)

**Rosetown Ramblers**, Portland's gay and lesbian square dance club, dances at mainstream, plus and advanced levels. (7-9:45 pm Wednesday on the lower level. Trinity United Methodist Church, 3915 SE Steele St. PO Box 5352, Portland, OR 97228. 234-9944, http://www.rdrop.com/users/ramblers.) (2/98)

**SW Washington Gay and Lesbian Socialites** gets together outside the bar scene for hikes, trips, cruises, camping, potlucks and game nights. (Mike 360-735-1901, 360-992-1032.) (12/97)

**Travel Lambda Connections Club** offers gay men over 40 the opportunity to travel with low-cost accommodations. Members stay in private homes of other gay men. Be a hosting or nonhosting member. (598-3442.) (7/97)

## SPIRITUALITY

**Affirmation—Portland Chapter**. Gay and lesbian Mormons, their families and friends meet for socials and discussions. (7:30 pm fourth Monday at MCC Portland, 2400 NE Broadway. 774-1362.) (2/98)

**The Anawim Community**. Gay men meet weekly for Christian meditation and prayer. (7:30 pm Thursday. 224-5984.) (12/97)

**Atheist Community Center of Oregon** holds weekly meetings. (7:30 pm Tuesday. 415 SW 13th Ave. 241-9268.) (3/97)

**Congregation Neveh Shalom** (conservative). Monthly meetings, services and other events. (Sheri Cordova 246-8831.) (7/97)

**Dignity—Portland**, the national organization of lesbian, gay and bisexual Catholics, their families, friends and lovers, holds weekly Mass. (7:30 pm Saturday at St. Stephen's Episcopal Church, 1432 SW 13th Ave. PO Box 6708, Portland, OR 97228. 295-4868.) (7/97)

**Diversity as Gift** provides spiritual classes and counseling focusing on the "inherent connectedness" of all people. (241-0073.) (2/98)

**The Downtown Chapel**, St. Vincent de Paul Catholic parish, offers a monthly Mass for gay, lesbian, bisexual and transgender Catholics and their friends and supporters. (6 pm third Tuesday. 601 W Burnside St. Roger 223-5907, ext. 130.) (11/97)

**East Vancouver United Methodist Church**. Reconciling. (10 am Sunday. 5701 MacArthur Blvd. 360-693-4761.) (3/98)

**First Congregational Church**. Wheelchair accessible. (10:30 am Sunday. 1126 SW Park Ave. 228-7219.) (10/96)

**First Congregational Church UCC Vancouver**. Open and affirming. Wheelchair accessible. (9-45 am Sunday. 1220 NE 68th St. 360-693-1476.) (3/98)

**First Unitarian Church of Portland**. (1011 SW 12th Ave. 228-6389, Bill 236-2830.) (1/98)

**Food for the Soul** is a monthly discussion group that explores different spiritual paths that are welcoming to gay men, lesbians, bisexuals and people with HIV. (7:30-9 pm second Wednesday at First Immanuel Lutheran Church, 1816 NW Irving St. Nelly Kaufer 239-3915.) (8/97)

**Full Circle Temple** is a "universe-ity," sanctuary and place of worship for women of all ages offering workshops, song and drum circles, meditation rooms, altars of celebration, and what you bring to share. Temple priestesses and drop-in women visitors welcome. (10 am-10 pm Tuesday-Sunday. 3125 E Burnside St. 238-0675.) (2/98)

**Gay Men's Spiritual Connection Group** is a nondenominational Christian fellowship for gay and bisexual men. (Alan or Lee 230-8070.) (9/97)

**The God Connection—New Thought Community Church**. Nondenominational Christian. (10 am Sunday. Suite 200, 5050 SW Griffith Drive, Beaverton. 643-7591.) (12/97)

**Journey Catholic Community** conducts a 6 pm Sunday Mass. (St. Stephen's Episcopal Church, 1432 SW 13th Ave. 323-2406.) (2/98)

**Lake Oswego United Church of Christ**. (10:30 am Sunday. 1111 SW Country Club Road. 635-4348, http://www.teleport.com/~loucc.) (7/97)

**Lesbian and Gay Meditation Group** meets for meditation in the Buddhist Vipassana tradition. Donation requested. (7:30-9 pm Wednesday. 2926 NE Flanders St. Greg 727-3575.) (10/97)

**Metanoia Peace Community**. United Methodist. (John Schwiebert 281-3697.) (2/98)

**Metropolitan Community Church of Portland**. (10 am Sunday, 7 pm Wednesday. Office hours: 9 am-5 pm Monday-Friday. 2400 NE Broadway. 281-8868.) (7/97)

**Metropolitan Community Church of the Gentle Shepherd**. (6 pm Sunday. 4505 E 18th St., Vancouver, Wash. PO Box 5094, Vancouver, WA 98668. 360-695-1480.) (2/98)

**Peace Church of the Brethren**. (11 am Sunday. 12727 SE Market St. 254-6380.) (2/98)

**P'nai Or (Faces of Light) of Portland** is a Jewish Renewal Community seeking to make Jewish spirituality accessible to all. (235-7256, 248-4500.) (2/98)

**Portland Faith Community**. Nondenominational. (10 am meditation, 10:30 am coffee, 11 am service. 8678 NE Sumner St. 287-3518.) (4/97)

**Potter's House**. Evangelical and charismatic Christian. (Sunday: 9:30 am Bible study, 10:30 am worship. Wednesday: 7 pm worship and Bible study. 3830 SE 62nd Ave. 775-5024.) (2/98)

**Radical Faeries** co-creates spirituality with nature, subverts uniformity and practices the politics of play. (235-0826.) (7/97)

**Rainbow Outreach Christian Church**. Full gospel charismatic. (10:30 am Sunday. 733 NE Fremont St. 281-5255.) (2/98)

**St. James Lutheran Church**. (9 and 11 am Sunday. 1315 SW Park Ave. 227-2439.) (7/97)

**St. Philip Neri's Paulist Center** sponsors Catholic gay and lesbian outreach with Mass, followed by socializing. (7:30 pm Friday. 2408 SE 16th Ave. 231-4955.) (7/97)

**St. Stephen's Episcopal Church**. (Wednesday: 12:10 pm Eucharist and healing service. Sunday: 7-45 am Eucharist, 10 am Eucharist with choir, Sunday school and nursery. 1432 SW 13th Ave. 223-6424.) (7/97)

**Seventh-day Adventist Kinship International** offers spiritual, emotional and social support to present or former SDAs who are gay or lesbian. A not-for-profit organization. Monthly activities; newsletter. (PO Box 33104, Portland, OR 97233. 244-0286.) (7/97)

**Shalom Ministries**. Methodist. Counseling and support groups are offered for coming out, grief, and reconciling religion and homosexuality. Fellowship gathering at 6:30 pm Wednesday. (760-4215.) (7/97)

**SisterSpirit** is women sharing spirituality. Most events are wheelchair accessible. (Suite 426, 408 SW Second Ave. PO Box 9246, Portland, OR 97207. 294-0645.) (1/97)

**Southminster Presbyterian Church**. Wheelchair accessible; Sunday school and nursery care available. (9:30 and 11 am Sunday in winter, 10 am Sunday in summer. 12250 SW Denney Road, Beaverton, OR 97008. 644-2073.) (5/97)

**University Park United Methodist Church**. (9:55 am Sunday. 4775 N Lombard St. 289-7843.) (1/97)

## SPORTS

The **Adventure Group**, Portland's gay and lesbian outdoors group, organizes a variety of activities and social events including hiking, skiing, mountain biking, camping and rafting. (452-5680.) (5/97)

**FOREST Group** outings are cooperative adventures for women. Participants are responsible for providing their own equipment and choosing outings appropriate for their skill and fitness level. All skill levels welcome. (331-9733.) (2/98)

Join a **gay and lesbian pool league** affiliated with the Oregon Pool Amateur League. All skill levels welcome; sanctioned by the American Poolplayers Association. (Call OPAL at 243-6725 and ask to sign up for the Central Division.) (3/97)

**Portland Gay and Lesbian Community Bowling Association's** league bowling begins in September. (11 am and 5 pm Sundays. \$7.50 per session. Renee 231-7085, Tom 293-0438, or send an SASE to PCBA, PO Box 851, Portland, OR 97207.) (9/97)

**Rose City Softball Association** is Oregon's only nationally-affiliated gay and lesbian softball league. Friendly competition for all skill levels. Players provide their own equipment. Fall and spring season play; ASA sanctioned. Nonplayers who want to volunteer are welcome. (Open division: Jim 281-7637. Women's division: Dawn 360-883-3670.) (9/97)

**Team Portland Aquatic Club** is a masters swimming team open to all skill levels. Committed swimmers and water polo players sought to compete at Gay Games V in August 1998. (Bill 228-1596.) (11/97)

**Team Portland Tennis Association** plays every Sunday morning, publishes a newsletter, and holds occasional business meetings and social tennis mixers. New members always welcome; all levels. (Carol 231-0949.) (8/97)

**Ski-O-Rama** is a gay and lesbian ski club. (286-2513.) (3/97)

**Wrestling Club** provides means to contact other wrestlers. (PO Box 40066, Portland, OR 97240-0066.) (7/97)

## YOUTH

**Gay, Lesbian, Bisexual, Transgendered and Questioning Youth Group** offers activities and support for youth aged 13 to 18. Adult facilitators. (4-6 pm Friday at Amazon Community Center, 2700 Hilyard St., Eugene. 541-684-3466.) (1/98)

**Janus Youth Programs** offers workshops for teens in areas such as self-esteem, anger management and life skills. (738 NE Davis St., Portland, OR 97232. Doug Pullin 233-6090, ext. 133.) (7/97)

**Lesbian, Gay and Bisexual Youth Group of Eugene** is a peer social, support and rap group that meets every Monday. Age 25 and under. (5-6:30 pm at Koinonia Center Library, University of Oregon, 1414 Kincaid St. 541-346-3360.) (4/97)

The **National Coalition for Gay, Lesbian and Bisexual Youth** is an organization of groups and individuals formed to serve the needs of queer youth across the country. (PO Box 24589, San Jose, CA 95154-4589.) (7/97)