

GARVEY'S CREW HOUSE

2 2 N W 2 3 r d A v e n u e

SPRING CLEANING SALE

15-50% Off EVERYTHING

shorts, tees, fleece, shirts,
sweat shirts, pants, jackets & accessories



FRIDAY, JUNE 20 KICKOFF CONCERT

Enjoy Thomas Lauderdale with Pink Martini and a host of opening acts (Spinsters Parlor, LMNOP, Carol Steinel, and the Galloway & Luckett Band). Beer Garden, food booths, and music all open at 6:15 p.m.

WIN A TRIP FOR TWO TO SAN FRANCISCO - HALLOWEEN WEEKEND!

Buy your raffle tickets from sellers in the bars and at the Pride Northwest Festival booth. Drawing will be held June 21st, 5:00 p.m., Waterfront Park's Silver Stage. Prize provided by Travel Agents International.

SATURDAY, JUNE 21 • PARADE, RALLY & FESTIVAL

You can register your parade contingent at the parade staging area in the North Park Blocks (N.W. 9th and Couch), 9:00 - 10:30 a.m. on Saturday, June 21. At 11:00 a.m. the parade will begin winding through the heart of downtown Portland to Waterfront Park where the festival continues until 6:30 p.m.

SUNDAY, JUNE 22 • COMMUNITY FORUM

Pride Northwest and Brother to Brother host Pride Parade Grand Marshal **Keith Boykin** for a lively lecture/discussion and reception at the **Interstate Firehouse Cultural Center (IFCC)**, 5340 N. Interstate, at **1:00 p.m. on Sunday**. Light refreshments will be provided.

Boykin is Executive Director of the National Black Lesbian and Gay Leadership Forum, a nationwide nonprofit organization that advocates for and empowers black lesbians and gays. He is also the author of the nonfiction book, *One More River to Cross: Black & Gay in America* (Doubleday, 1996), which was recently selected as a finalist for a Lambda Literary Award. As Special Assistant to the President of the United States in the Clinton administration, Keith was the highest ranking openly gay or lesbian person in the White House.

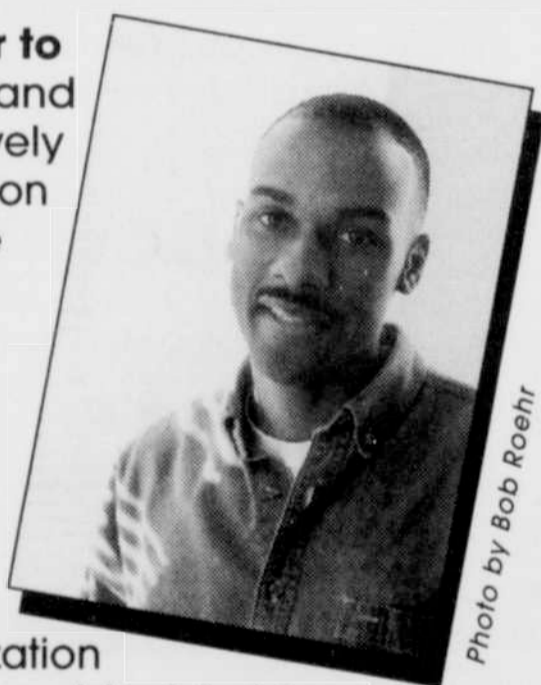


Photo by Bob Roehr

Pick up a '97 Pride Program for a Pride Month Calendar of Events and read *Just Out* for more details about Pride '97 activities.

Sponsored in part by **just out Coors.**

Produced by



For additional information call **Pride Northwest, Inc.** at **503/295-9788**; e-mail us at: **pdx.PrideNW@aol.com**; or write: **Pride Northwest, Inc., PO Box 6611, Portland, OR 97228.**

local news



PHOTO BY LINDA KLEVER

At last year's Tournament of Choice, "The Furies" took second place in their division

LCP softball tournament on for August

The Portland-based Lesbian Community Project is sponsoring the Tournament of Choice, its annual softball tournament, from Aug. 1 to 3. The games will be held at Prairie Fields in Brush Prairie, Wash.

For additional details and vendor applications contact LCP at 282-8090.

Gathering designed for families

The Northwest LGBT Families Conference will be held Aug. 8-10 at the Living Enrichment Center in Wilsonville, Ore.



Workshops addressing an array of issues related to gay, lesbian, bisexual and trans families will be presented.

Those interested in planning or attending the gathering should contact Love Makes a Family at 228-3892, or e-mail lmfamily@teleport.com.

Ruby House hits financial pothole

The Douglas County AIDS Council is seeking donations to support Ruby House, a nearly decade-old Roseburg facility serving people living with HIV in rural Oregon.

Due to governmental budget cuts, the council says service payments for Ruby House foster care have dropped from an average of \$40,000 to \$25,000—a reduction it says leaves Ruby House "close to insolvency."

Ruby House is described as the "oldest AIDS home" in operation outside the Portland area. It is the only facility that provides housing for disabled people living with HIV between Eugene and Medford.

To help, call (541) 440-2761 or e-mail dcac@teleport.com.

OSU student receives honor

Nathan Guzman, a student at Oregon State University, is the recipient of the Pride Foundation/Greater Seattle Business Association's Daniella Altfeld-Moreno Scholarship, which is awarded to gay or lesbian Latino/a youth with a "preference for young people involved in athletics."

Guzman is among 27 recipients of an array of 1997-98 scholarships awarded by the Seattle-based Pride Foundation and GSBA.

The scholarships "work to strengthen the lesbian, gay, bisexual and transgender community in the Pacific Northwest by promoting education and recognizing leadership."

Guzman is co-director of OSU's Lesbian Gay Bisexual Transgender Alliance and an active member of the Hispanic Cultural Center. He is a member of the university's crew team and has been honored for his achievements in swimming and water polo.

For more information about the scholarship program, contact Pride Foundation at 1-800-735-7287.

Yamhill County group pushes for access

Consumers, providers and health officials in Yamhill County are meeting regularly to develop improved access to services for people living with HIV/AIDS in that largely rural county.

The group, called the AIDS/HIV Services Round Table, is concerned about what it views as a lack of access to services outside the Portland area.

Some services in Yamhill County are available through the Four County Consortium, funded by Ryan White CARE Act allocations.

HIV/AIDS services are primarily funded with federal dollars through Ryan White. That funding is in turn allocated by an appointed planning council.

"Even though 15 percent of people with HIV/AIDS in the Portland area live in rural areas, there are no people from rural areas on the planning council," says Joy Halme, a rural outreach worker. "Our needs seem to get lost among the needs or beliefs of those who are represented at the table."

To get involved with the AIDS/HIV Services Round Table, contact Carol Hansen at the Yamhill County Health Department at 538-7302 or (503) 434-7525.

Compiled by Inga Sorensen