



photo Doug Shafer

gazelle
NATURAL FIBRE CLOTHING

DOWNTOWN
733 SW Alder
228-1693

EASTSIDE
4100 NE Fremont
288-3422



Gai-Pied

(GAY PEE-Ā)

Unique selection of gay books, magazines, calendars & cards
Prints from the SOHO Gallery of S.F.

Popular Gay Movie Titles (rental only) • Novelty Items

331-1125 • 2544 NE Broadway
Portland, OR 97232

A percentage of proceeds donated to local AIDS organizations

World Beat
Soul
Oldies
Folk
Cajun
New Age
Soundtracks
Lounge
Comedy
Spoken Word



Rock
Womens
Jazz
Gospel
Country
Bluegrass
Musicals
Big Band
Reggae
and more...

EAST PORTLAND
32nd & E Burnside
231-8926

**CELEBRATE
LESBIAN & GAY
PRIDE MONTH**

NW PORTLAND
23rd & NW Johnson
248-0163

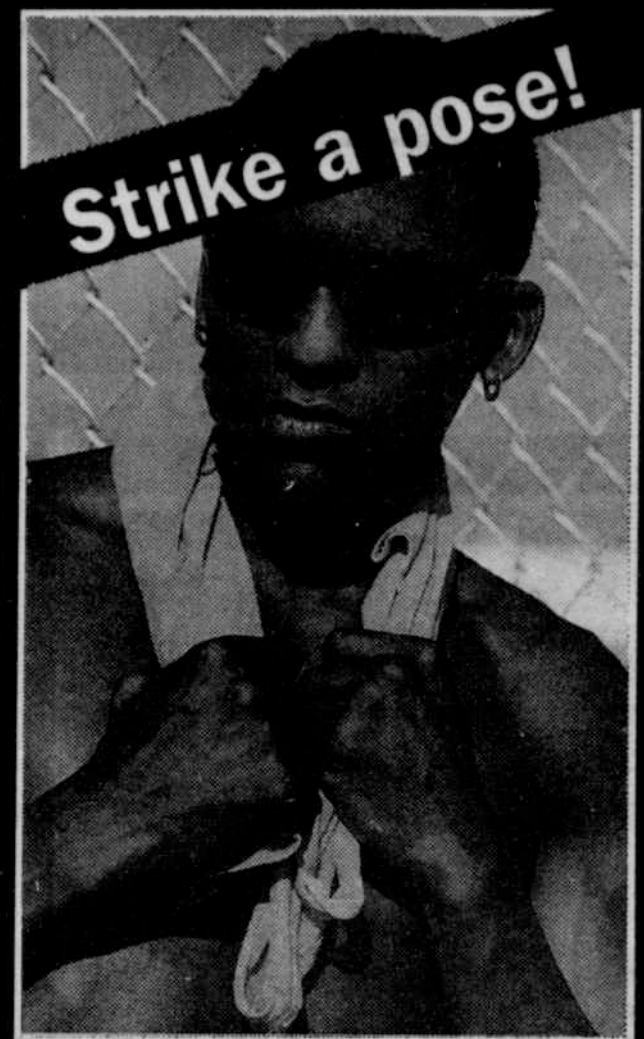


*And you thought I-5
was the quickest way to escape the city.*

With incredible views, superb service and Northwest cuisine prepared in our on-board galley, the Portland Spirit or the more intimate luxury yacht, the Willamette Star, have everything you need for the perfect escape. Join us for a lunch, brunch or dinner cruise. Call for reservations and departure times. Gift certificates are also available.

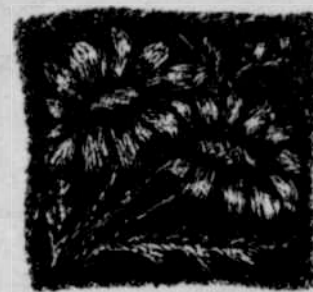


224-3900 • (800) 224-3901



Strike a pose!

seeing
IS BELIEVING
908 NW 23rd Avenue
221-1459



Helping you enjoy
nature first hand!

- GARDENS**
perennials
annuals
fruit trees
herbs
roses
bamboo
vines
soil
pots
baskets
flowers
decor
- PONDS**
fish
supplies
- BIRDS**
baths
feeders
houses
- SEEDS**
organic
heirloom
specialty

**HAWTHORNE
GARDEN CENTER**
4747 SE Hawthorne
Portland, OR 97215
234-4747
Open Tuesday - Sunday
10am - 6pm
Closed Mondays

**We Build
Ponds!**

just out

PO Box 14400 • Portland, OR 97214

Address Correction Requested

Dated Material: Do Not Delay

University of Oregon - Library
PO Box 3237
Eugene, OR 97403-0237

**Bulk Rate
US Postage
PAID
Hillsboro, OR
Permit #23**