

IT LOVES KAYAKING, SOFTBALL GAMES AND LONG-TERM COMMITMENT. TOO BAD IT'S ONLY A CAR.



The partner who gives its all—without any compromises from you

The All-Wheel Drive Subaru Impreza Outback gives you the go-anywhere freedom of a 4X4 with the civilized handling and smart styling of a passenger car. Compromise? Forget it. Instead of giving you a little of each, the Impreza Outback lets you drive the best of both. With a 135-hp 2.2-liter 16-valve boxer engine, the Impreza Outback never lets you forget that getting there is part of the sport.

Safety first

With the Impreza Outback, you never have to prepare for sudden changes in road surfaces. That's because the Subaru All-Wheel Driving system doesn't have to be switched on—it's always working for you, monitoring the road and weather conditions and transferring power to the wheels that need it most. When the going gets rough, the heavy-duty 4-wheel independent suspension and beefy all-season tires offer the ground clearance you'll need to get over the bumps. And whenever you need to stop,

93%

of the All-Wheel Drive Subaru cars sold in the last 10 years are still on the road.*

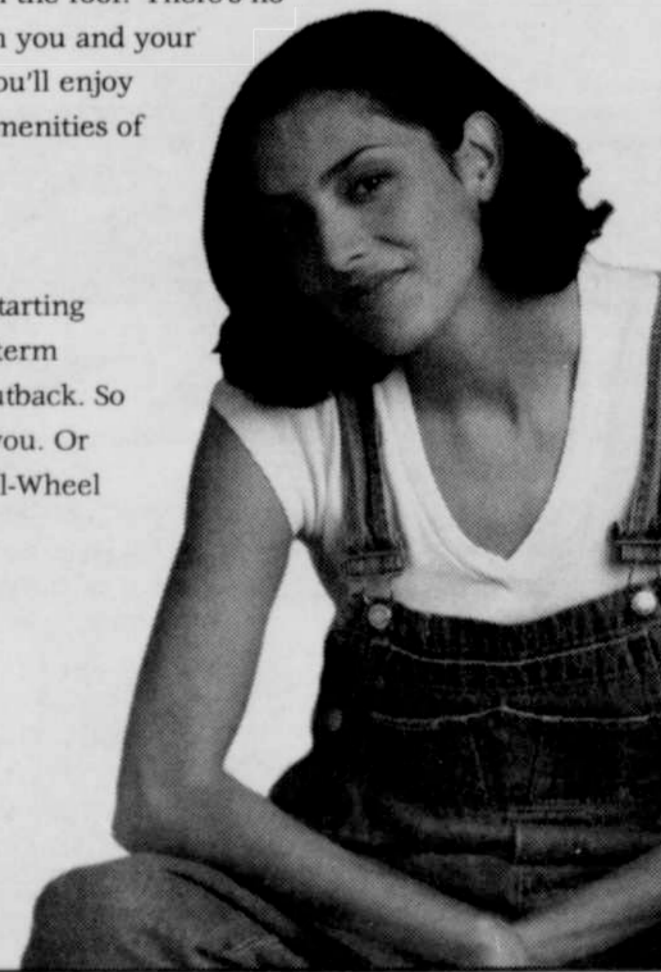
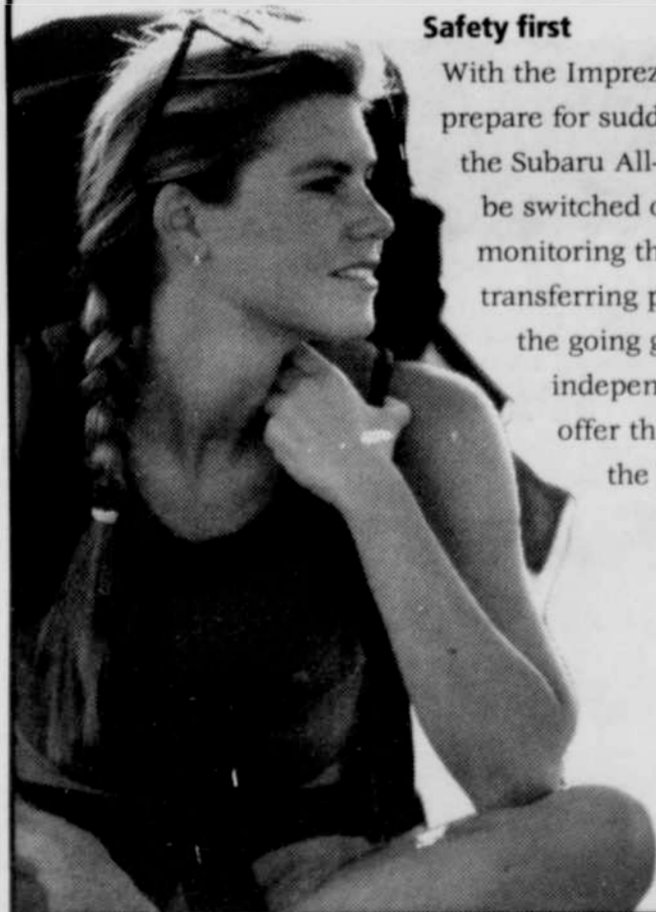
you'll do so safely with the Impreza Outback 4-wheel disc brakes with 4-channel ABS.

Comfort too

The Impreza Outback has room to haul it all, whether you've got camping gear for a two-week trek or are just taking the winter wardrobe into the dry cleaners. Need to stow stuff on the roof? There's no stepladder to climb. And when you and your friends settle in for the trip, you'll enjoy the comfortable seating and amenities of an ergonomically designed passenger car.

Good friends don't ask too much

It loves the same things you do. And with a starting price of just \$17,595, it's easy to build a long-term relationship with the new Subaru Impreza Outback. So call 1-800-WANT-AWD for the dealer nearest you. Or better yet, come in and experience Subaru All-Wheel Drive for yourself.



SUBARU 
The Beauty of All-Wheel Drive.[®]

Proud Founding Sponsor of the Rainbow Endowment
1-800-99-RAINBOW

*MSRP of the Subaru Impreza Outback with All-Wheel Drive. Pictured is the Subaru Impreza Outback. MSRP is \$17,595. Price not including inland transportation, taxes, license and title fees. Dealer's actual price may vary. Certain items shown are optional equipment available at an additional charge. †Includes all-wheel- and four-wheel-drive vehicles; Source: R.L. Polk & Co. statistics as of 7/1/94.