

# HOW TO ADD MUSCLE WITHOUT JOINING A GYM.



#### Strength you can count on

No other car is built like the Subaru Legacy 2.5 GT Sedan. Muscle? It's got plenty, with the safety, reliability and good sense that add up to a companion you can trust.

#### The power to perform

Looking for strength? Check out the Legacy 2.5 GT Sedan's 155 horsepower, 2.5-liter 16-valve DOHC engine. And get a load of its 4-speed, Electronically Controlled Automatic Transmission—it engages power mode automatically, based on how aggressively you step on the throttle.

#### The smarts to play it safe

But strength without smarts won't keep you satisfied for long. That's why the Legacy 2.5 GT Sedan has the Subaru All-Wheel Driving system that automatically adjusts to grip any terrain securely, able to carve through snow-covered passes as easily as it glides around an urban intersection. Add to that a 4-wheel independent suspension with stabilizer bars, standard dual air bags,\* 4-wheel disc

**T**he Subaru Legacy Sedan is the best-selling all-wheel-drive sedan in America.†

brakes with 4-channel ABS, and you've got a car that lets you tear it up without compromising on safety.

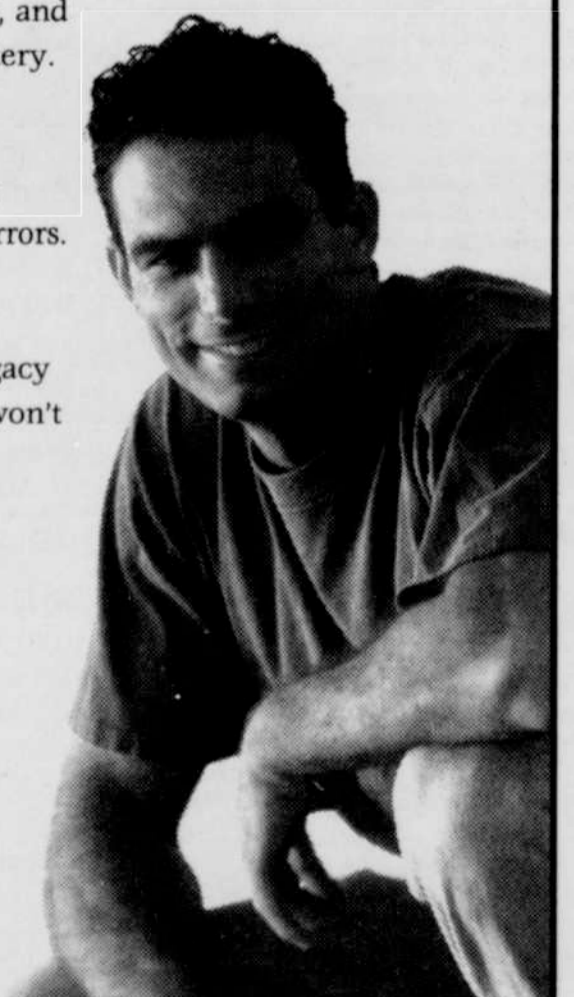
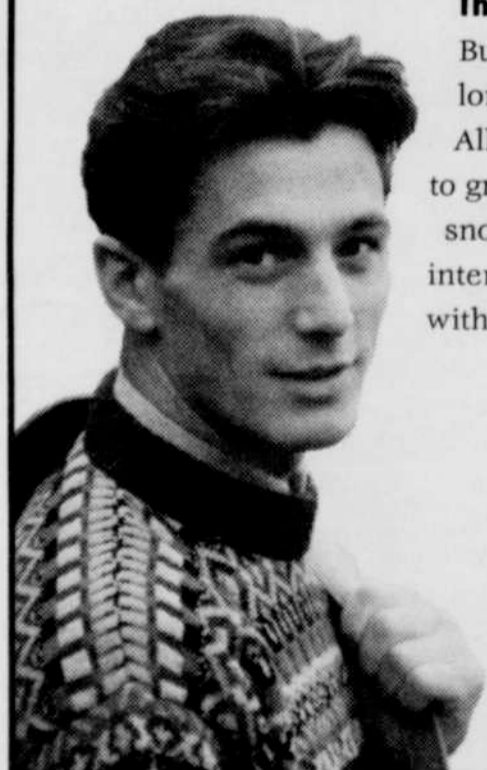
#### A touch of luxury

And while the Legacy 2.5 GT Sedan is designed for performance, it's also built for comfort. Settle into the deeply bolstered driver seat, with adjustable height and lumbar support, and admire the amenities: Special upholstery. Elegant, woodgrain patterned trim.

Standard 80-watt, 4-speaker sound system. Power windows and door locks. And try out the flattering lighting on the 2.5 GT Sedan's dual visor vanity mirrors.

#### Priced to go without guilt

Starting at just \$22,295,\* a new All-Wheel Drive Legacy 2.5 GT Sedan may make your heart race, but you won't go weak at the knees. So call 1-800-WANT-AWD for the dealer nearest you. Or better yet, come in and experience Subaru All-Wheel Drive for yourself.



**SUBARU**   
*The Beauty of All-Wheel Drive.*®

Proud Founding Sponsor of the Rainbow Endowment  
1-800-99-RAINBOW

\*MSRP of the Subaru Legacy 2.5 GT Sedan with All-Wheel Drive. Pictured is the Subaru Legacy 2.5 GT Sedan. MSRP is \$22,295. Price not including inland transportation, taxes, license and title fees. Dealer's actual price may vary. Certain items shown are optional equipment available at an additional charge. \*\*Always wear seat belts. †Based on R.L. Polk & Co. Registration statistics for calendar year ending 1994.