



Lakita (left) and Dwayne talk to peers about HIV in a new series of public service spots

HHS seeks to educate youth about HIV and AIDS

Citing new evidence that both the rate of HIV infections and HIV-related deaths among young adults are on the rise, the Department of Health and Human Services released a new series of public service announcements urging young people to take personal responsibility for protecting themselves from HIV infection.

In 1993, AIDS became the leading cause of death for people in the United States between the ages of 25 and 44. AIDS deaths in that group rose from 37,000 to 42,000 for 1993-94. On average, in this age group AIDS caused one in every three deaths among African American men and one in every five deaths among African American women.

Referring to those numbers, HHS Secretary Donna Shalala said, "While our AIDS prevention efforts have succeeded in stabilizing or even

reducing the rate of infection among older Americans, they are not having the same kind of effect among young adults."

"What we have is a generation in jeopardy," Shalala continued. "And it is up to us to take action now to reverse these troubling trends before we wipe out a new generation of leadership for this country."

The new series of PSAs, entitled "Respect Yourself, Protect Yourself," shows young adults talking candidly about their lives and modeling protective behaviors and skills including abstaining from sex, communicating with sexual partners and parents about sex, and using latex condoms consistently and correctly if choosing to have sex.

Young adults were involved at every stage in the development of the PSAs. Young adults who are HIV educators and service providers, as well as members of the target audience, worked on the project.

Kristine Chatwood

Mississippians reject DNC anti-bias language

Members of the Mississippi Democratic Executive Committee voted to adopt a general statement that they oppose all discrimination, rather than a statement that lists specific groups, including gay men and lesbians, the disabled and persons with low incomes.

Stating that moving away from lists will help Democrats win back "mainstream" voters, committee member Sherra Hillman of Waynesboro added, "They feel we've reached out to everyone and have forgotten the people who made the Democratic Party."

The document originally mirrored language used by the Democratic National Committee. It said, "As part of these programs, outreach will be directed at all Democratic constituencies, including groups such as ethnics, youth, persons over 65 years of age, lesbians and gay men, workers, persons with high school education or less, persons with physical disabilities and persons of low and moderate income."

The Mississippi Democrats cut it off at "outreach will be directed to all Democratic constituencies."

Dems go after Log Cabin's Tafel

Angered by recent attacks on President Clinton by Rich Tafel, president of Log Cabin Republicans, gay and lesbian Democrats launched an assault on Tafel and his organization.

"The Log Cabin Republicans, under the leadership of Rich Tafel, have stooped to the worst

level of misleading political rhetoric in order to justify GOP plans to gut Medicaid and stall Ryan White funding," stated Barry Bond, director of the Democratic National Committee's Lesbian and Gay Outreach Desk.

Responding to statements Tafel made in a recent issue of *The Washington Blade*, in which he tries to link potential disruption of Ryan White funding to Clinton's rejection of the Republican budget, Bond went on to say, "Tafel is trying to deflect Republican inaction on appointing House conferees for the re-authorization of Ryan White. He is also trying to draw attention away from Republican efforts to make significant cuts in Medicaid and shift the responsibility for those services to the states. The Log Cabin Club espouses gutting government. In the end, their philosophical belief will throw thousands from our community out on the streets and deny them the care they deserve and desperately need."

Medicaid is the single largest source of health care financing for persons with AIDS in this country. More than 50 percent of adults, and the same percentage of children, living with AIDS are covered by Medicaid. It is estimated that 30 percent of people with AIDS are uninsured, Bond stated.

Eric Bauman, president of the Los Angeles Stonewall Democratic Club, joined the discussion by saying, "It's time for Rich Tafel and the Log Cabin Club to wake up and admit that the Republican agenda is determined to destroy every health care advance made by the lesbian and gay community in the last decade. While Republicans in Congress declare us immoral and undeserving, Bill Clinton has stood firm on the issue of AIDS funding time and time again."

Compiled by Kristine Chatwood

Problems with your dream house?

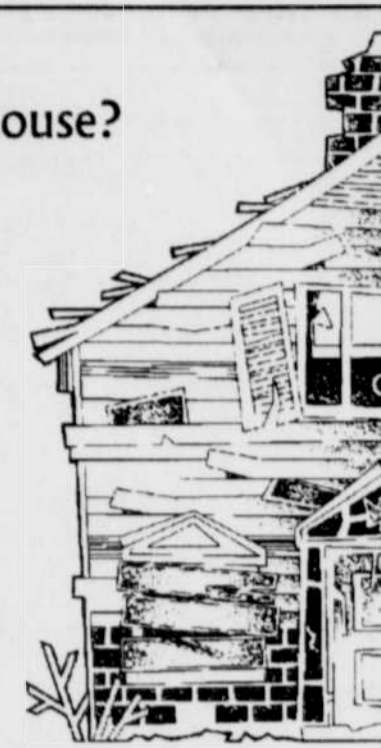
We can help!

Arts & Crafts Construction

specializing in repair & remodeling of period houses

call Steve at
648 6968 or 1 800 684 9038

licensed/bonded/insured CCB # 107844



CELEBRATE THE NEW YEAR

SPONSORED BY
THE LESBIAN COMMUNITY
PROJECT

ANNUAL LESBIAN



NEW YEAR'S EVE
DANCE & SILENT AUCTION



THE PORTLAND LESBIAN CHOIR

8 PM - 1 AM, SUNDAY, DECEMBER 31

MONTGOMERY PARK ATRIUM, NW VAUGHN AT 28TH STREET

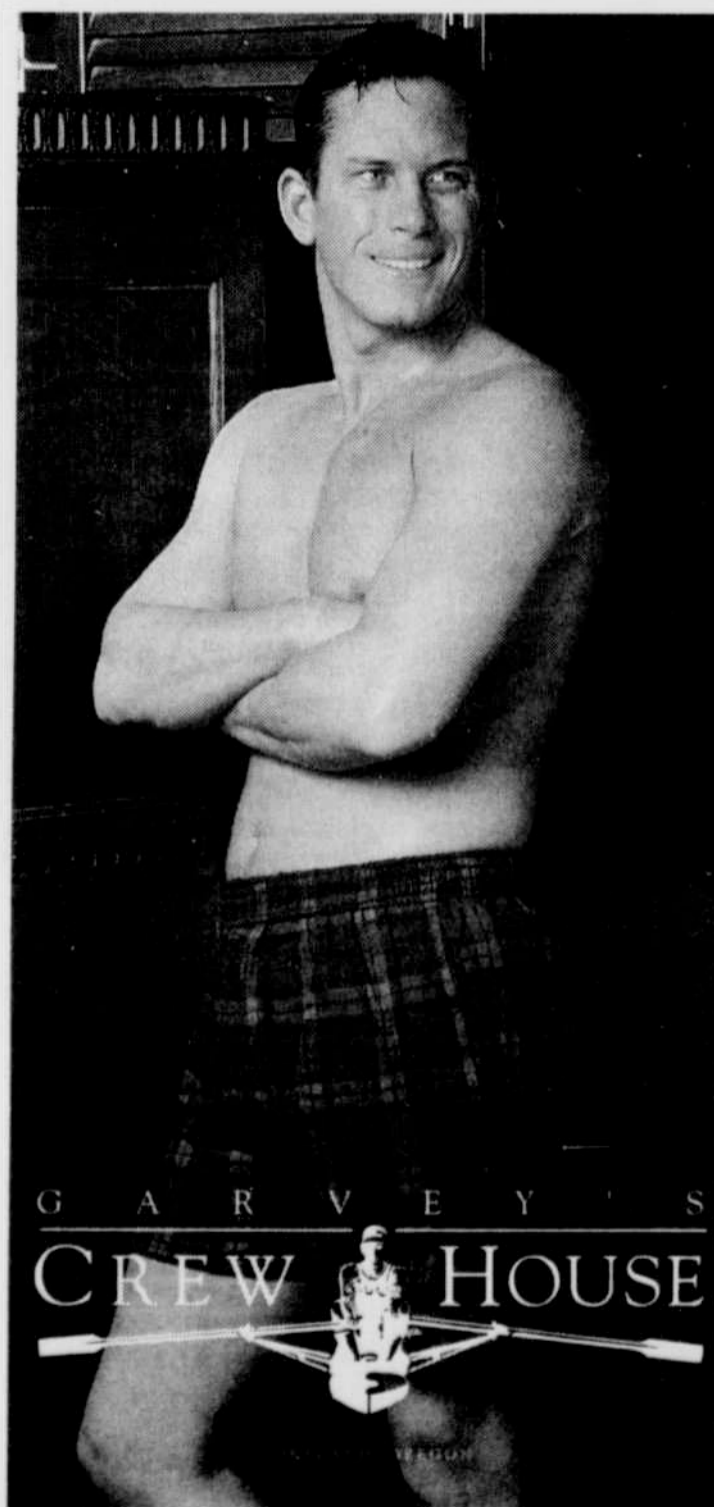
- ◆ HOR'S D'OEUVRES ◆
- ◆ FREE CHILDCARE ◆
- ◆ NO-HOST BAR ◆ SMOKE-FREE ◆
- ◆ FREE CIDER AT MIDNIGHT ◆
- ◆ MC: JANICE GROUNDS ◆
- ◆ DJ: JANICE INMAN ◆
- ◆ LIVE MUSIC BY BLUSH ◆



\$15 ADVANCE ◆ \$20 AT DOOR

Advance Tix: *It's My Pleasure*,
Jelly Bean, *In Other Words*,
Mother Kali's (Eugene),
Rosebud & Fish (Salem)

VISA/MC by phone -LCP: 223-0071



FINE
CASUAL CLOTHING
AND SPORTSWEAR
FOR THE
ACTIVE PACIFIC
NORTHWESTERNER.

22 NW 23RD
PORTLAND
223-0244

RIVERPLACE MARINA
PORTLAND
497-9030

GARVEY'S
CREW HOUSE

Featuring
RALPH LAUREN POLO, CALVIN KLEIN,
MOSSIMO, RED SAND, JOE BOXER AND
PORTLAND'S OWN
McCORMICK & SCHMICK'S
BAIT SHOP CLOTHING LINE