




A HAVEN BY THE SEA

Six spacious oceanfront units on a bluff above the beach, with easy beach access. The hot tub in the yard overlooks the surf and miles of sandy beach. Join us for a beautiful and restful stay. Gift certificates available. Your hosts, Marilee Haase & Sandy Pfaff
 Lincoln City (503) 994-5007 • 1-800-866-9925




Beaverton ☎ 646-3824
 4000 SW 117th
 Corbett ☎ 244-3934
 5909 SW Corbett
 Division ☎ 233-7374
 3016 SE Division
 Fremont ☎ 288-3414
 3449 NE 24th
 Hillsdale ☎ 244-3110
 6344 SW Capitol Hwy



Brian Marki Framing
 Newly Expanded Fine Art
 Sculpture, Painting And
 Photography
2236 NE Broadway, Portland
503-249-5659

THE NUTCRACKER
 DECEMBER 9-28



OREGON BALLET THEATRE
 CALL 2-BALLET
 OR TICKETMASTER
 790-ARTS

WillametteWeek AA AmericanAirlines

THREE BIG HITS AT BOXES AND THE BRIG



Monday in Boxes
WATCH MELROSE PLACE EVERY MONDAY

7:00 PM	Last week's episode
8:00 PM	New episode plays live
9:00 PM	Absolutely Fabulous
9:30 PM	Cybill



Monday in The Brig
WIMMINS NIGHT IS LEZBO-A-GO GO!
 9PM - 2:30AM
 \$2 cover
GO-GO DANCERS!
 \$1 Bud drafts \$1 Schnapps



Tuesday in Boxes
MISHA'S MAKE A DATE!
 "It's a hit!"
EVERY TUESDAY
 Meet the person of your dreams
 Date coordinator & Host Misha arrives at 8pm

CELEBRATING OUR GRAND OPENING!

BEGINNING
NOV. 18TH

DUE TO POPULAR DEMAND
PORTLAND'S PREMIER WOMEN'S CLUB

OPEN 7 DAYS A WEEK & EXPANDING IT'S
DANCE NITES!

DANCING WITH MUSIC BY DJ MEL

WILL BE
 .THURSDAYS. .FRIDAYS.
 SATURDAYS. .SUNDAYS. & .MONDAYS!

NEW MUSIC
 NITE ON
 SUNDAYS

INCREDIBLE
 DRINK & MENU SPECIALS
 NITE

RETRO
 NITE ON
 MONDAYS

MEET
 UP AT
 THE

EGYPTIAN CLUB

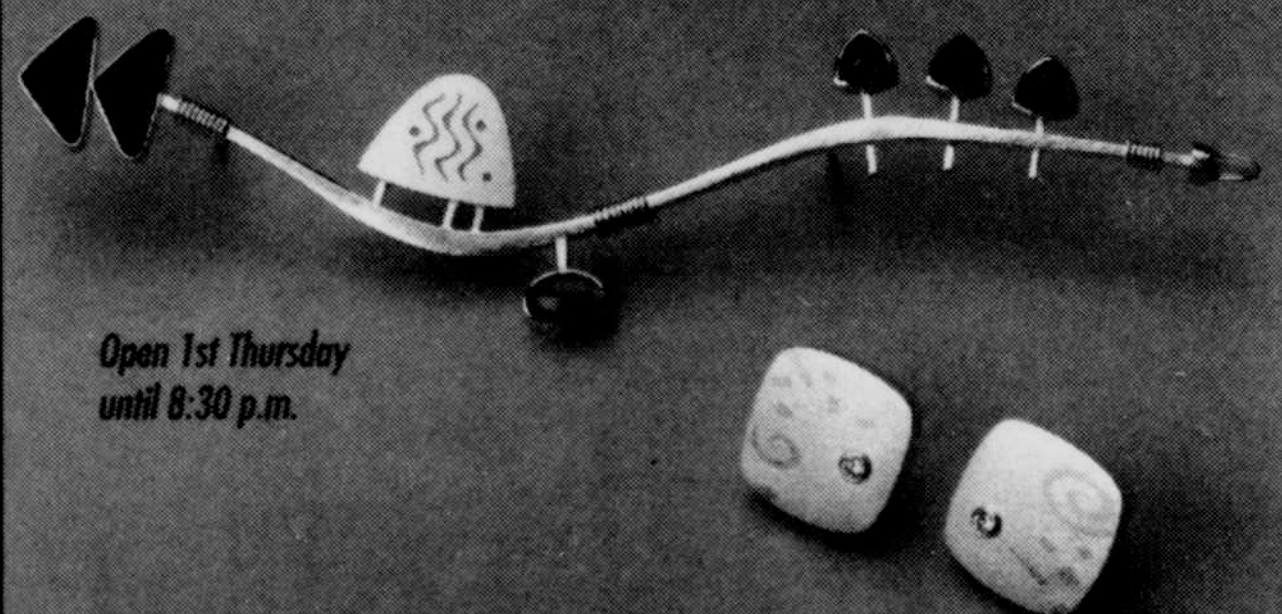
FOODS
 SPIRITS
 MUSIC

. 3701 SE DIVISION . 236-8689 . 11AM -2AM .

NOVEMBER-DECEMBER

TAMI DEAN
 FINE JEWELRY

ZWEIFEL
 ART-GLASS



Open 1st Thursday
 until 8:30 p.m.

The Real Mother Goose

901 SW Yamhill • Portland, OR • 97205
 (503) 223-9510