

MY MISSION



BOBBIE SHATTO
Personal Financial Advisor



**FINANCIAL
ADVISORS**

...is to help clients achieve their financial objectives. As an advisor my role is to educate and motivate them to take the actions necessary to reach those financial goals.

Planning for...

- ESTATE
- RETIREMENT
- ACCUMULATION
- BUSINESS

(503) 255-4900
(360) 694-3117

Coventry
Cycle
Works



**UPHILL TECHNOLOGY.
DOWN HILL PRICING.**

Come in and test ride the new 1995 models from Trek. Mountain Bikes and City Bikes starting at \$259.
OPEN TUESDAY-SUNDAY
230-7723 • 2025 SE Hawthorne



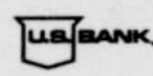
FROM ALL WALKS OF LIFE

10K PLEDGE WALK
SATURDAY, SEPTEMBER 9

OVERRUN AIDS - 5K & 10K ROAD RACES
SUNDAY, SEPTEMBER 10

WATERFRONT PARK • PORTLAND, OREGON
TO BENEFIT CASCADE AIDS PROJECT

TO REGISTER & FOR MORE INFORMATION CALL 223-WALK



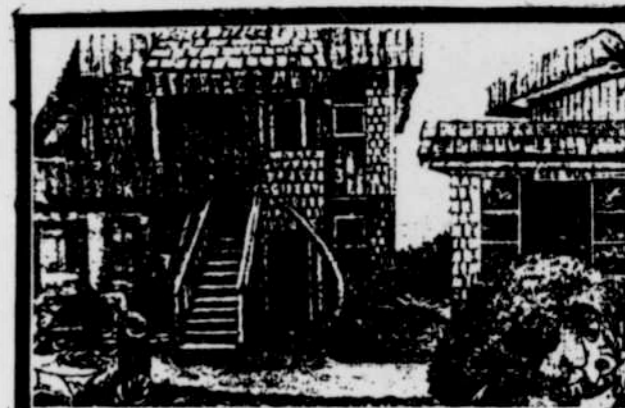
THIS SPACE PROVIDED IN PART BY JUST OUT.

GREAT RATES

Since 1947



Vancouver
892-5555
Portland
285-0297



The See Vue

Lodging—where mountain meets the sea

95590 Highway 101
6.2 miles south of
Yachats, Oregon 97498
(503) 547-3227

Urgent Need For HIV Positive Individuals

North American Biologicals, Inc. (NABI) is supplying a vaccine-like drug HIVIG™ to the National Heart, Lung, and Blood Institute of Health for a Major Phase III clinical trial to test the effectiveness of HIV immune globulin in preventing the transmission of the AIDS-causing virus from HIV positive mother to unborn infants.

IF YOU:

- ARE HIV+ AND HEALTHY
- WANT REGULAR T CELL COUNTS
- WANT MONTHLY PHYSICAL EXAMS
- WANT FINANCIAL SUPPORT FOR YOUR TIME

Please contact:

CHRISTINA OR SANDRA FOR INFORMATION OR APPOINTMENT

BECAUSE NO ONE ELSE CAN...

Your HIV antibodies may save lives!
As the sole source for this important new drug, every eligible HIV positive individual should consider their participation.

 **NABI BIOMEDICAL CENTER**
the human touch

Monday thru Friday 8 am to 6 pm • Saturday 8 am to 12 pm
3726 Martin Luther King Jr. • Portland, OR 97212
(503) 249-1433 FAX (503) 287-9853