

### Emily Simon

620 SW Fifth Ave., Ste. 1204  
Portland, Oregon 97204  
(503) 241-1553  
(503) 241-2587 FAX

Emphasizing representation of the accused in all misdemeanor, felony, traffic and DUI actions in state, federal, juvenile courts and administrative actions

### HELP PLAN THE FUTURE

Oregon



Sexual Minority Youth Network

(503) 228-5976

PO BOX 162, PORTLAND, OR, 97207-0162

## WE REPLACE WINDOWS

Now you can replace your old windows with new vinyl custom fit insulated windows. Your new windows will keep your home warmer in winter, cooler in summer, reduce condensation and sound proof your home.

18 year of experience in the same location makes us one of Portland's most experienced window companies.

Visit our showroom or call today for a courteous in-home estimate.

**283-9481**

**INSULATED WINDOW CORPORATION**



Garland Horner  
Owner

Oregon BB # 19095  
8124 N. Denver

## IF YOU CAN'T GET A LOAN FROM US, YOU CAN'T GET A LOAN

*We handle all conventional and nonconventional loans.*

- ◆ First Time Home Buyers Programs
- ◆ Self-Employed Borrowers
- ◆ Bankruptcies & Foreclosures
- ◆ Complicated Borrowers
- ◆ Investment Properties
- ◆ Manufactured Housing/Land
- ◆ Credit Problems
- ◆ Debt Consolidation
- ◆ 3% Down Programs
- ◆ Pre-approvals for Purchase

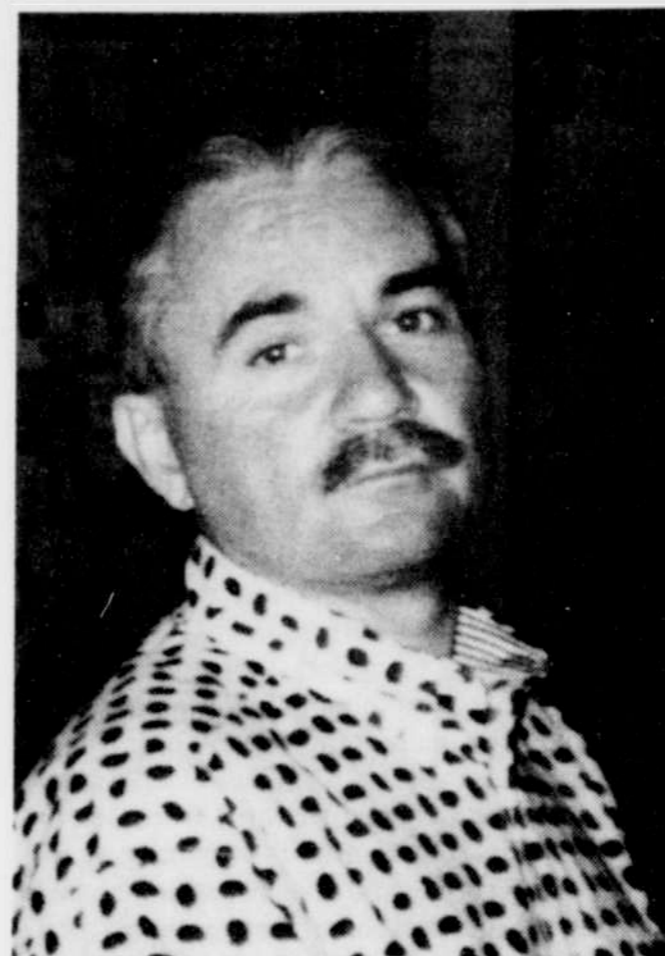
*We're your full service mortgage company.*

Call today for a free qualification over the phone  
**503/636-2066**  
Pager 503/870-1666

**Christine C. Hall**  
Mortgage Broker



## local news



Jim Everett

### Phoenix Rising taps Everett

Phoenix Rising, a Portland-based sexual minority counseling center, has hired Jim Everett as its director of clinical services.

Everett had been director of the HIV/AIDS program at Montrose Counseling Center in Houston. He received his MSW from the University of Arkansas and is credentialed by the National Association of Social Workers and the Academy of Certified Social Workers. He holds social-work licenses in Oregon, Washington and Texas.

In addition to supervising clinical services at Phoenix Rising, which has provided counseling services to sexual minorities since 1977, Everett will focus on the expansion of HIV counseling services, mental health groups, services to women, and ways to bring the agency into the managed health care system.

### HIV/AIDS organizations receive \$85,000 in grants

The Research & Education Group, a Portland HIV-research group, and Art/AIDS Living with HIV Fund, a coalition of Portland-area artists, have awarded grants totaling \$75,000 to Oregon organizations serving people living with HIV and AIDS.

Our House, a residential hospice facility in southeast Portland, received \$15,000 for its Quality of Living Program, which provides services—including massage and counseling—designed to enhance the lives of people in the late stages of AIDS; Lane County AIDS Hospice in Eugene

received \$40,000 to expand its drop-in hospice care program; and OnTrack Inc., which provides services to needy families and individuals in Jackson County, received \$20,000 to help improve outreach to people living independently with HIV.

An additional \$10,000 grant was awarded through the Paul Michael Starr Education Fund, which supports HIV-prevention programs directed toward young people. The recipient, South Coast Health Council in Coos Bay, provides secondary students in North Bend and Coos Bay with HIV and AIDS information through peer education programs.

### Just 'Cause seeks support for Bradley-Angle House

It's called Just 'Cause Portland, and it's designed to get small businesses involved in building a better society.



**BRADLEY-ANGLE HOUSE**

Just 'Cause Portland is the brainchild of Roy and Rebecca Conant, owners of Conant & Conant Booksellers and Biblio Teas Cafe. The duo is donating 25 percent of each cafe sale to Bradley-Angle House, a Portland organization that assists abused women and children, and they're asking other small businesses to make a similar commitment. The Conants are requesting that small business owners select one product, determine how much they can afford to donate to Bradley-Angle House from each sale of that product, and then let the Conants know. In turn, the couple will be compiling a directory in order to let other businesses and the "public know how we support the community in which we live and do business."

Roy Conant says, "So many times, small-business people are working 15- or 16-hour days. This is a good way for them to still be involved in making a better community." Conant says business contributions can be made on a weekly, monthly or quarterly basis.

Registration forms are currently available at the Biblio Teas Cafe, located at 1001 SW 10th Ave. in Portland. For more information, call 223-6162.

Compiled by Inga Sorensen

## It's My Pleasure

Resources supporting and empowering women  
A Lesbian Owned business

OPEN 7 DAYS A WEEK!

Monday thru Saturday 10am to 7pm  
Sunday 11am to 5pm

(503) 236-0505

4526 SE Hawthorne Portland, OR 97215  
(Right after 45th, on Hawthorne next to the 7-11)

